
Residents of GreenLake County

Motor Vehicle Crash Occupants, Hospitalizations, Emergency Room Visits and Fatalities 2003-2007

	Auto	Truck	Motorcycle	Bicycle	Pedestrian	Total
Crash Occupants	4,113	1,506	53	17	21	5,710
Hospitalized Cases	44	9	9			66
Hospital Charges	\$1,759,315	\$489,255	\$135,877	\$10,214	\$197,634	\$2,592,295
Emergency Room Visits	397	128	25	10	12	455
Emergency Room Charges	\$550,374	\$193,420	\$57,955	\$9,128	\$25,223	\$600,320
Deaths	14	6	1	0	0	21

Indicates a value < 6

**Residents of GreenLake County
Hospitalization Charges by Vehicle Type
2003-2007**

	Auto	Truck	Motorcycle	Bicycle	Pedestrian
Hospital Charges	\$1,759,315	\$489,255	\$135,877	\$10,214	\$197,634
Total Crash Occupants	4,113	1,506	53	17	21
Hospital Charge/Occupant	\$427.74	\$324.87	\$2,563.72	\$600.82	\$9,411.14

**Hospitalization Rates by Vehicle Type
2003-2007**

	Auto	Truck	Motorcycle	Bicycle	Pedestrian
Hospital Cases	44	9	9		
Total Crash Occupants	4,113	1,506	53	17	21
Hospitalization Rate/Crash Occupant	1.1%	0.6%	17.0%	5.9%	14.3%

**Emergency Room Charges by Vehicle Type
2003-2007**

	Auto	Truck	Motorcycle	Bicycle	Pedestrian
ER Charges	\$550,374	\$193,420	\$57,955	\$9,128	\$25,223
Crash Occupants	4,113	1,506	53	17	21
Emergency Room Charges/Crash Occupant	\$134	\$128	\$1,093	\$537	\$1,201

**Emergency Room Visits by Vehicle Type
2003-2007**

	Auto	Truck	Motorcycle	Bicycle	Pedestrian
Emergency Room Visits	397	128	25	10	12
Total Crash Occupants	4,113	1,506	53	17	21
Emergency Room Rate/Crash Occupant	9.7%	8.5%	47.2%	58.8%	57.1%

Indicates a value < 4

**Residents of GreenLake County
Occupants of Motor Vehicle Crashes
2003-2007**

	Auto	Truck	Motorcycle	Bicycle	Pedestrian	Total
2003	879	367				1,260
2004	803	283	10			1,100
2005	836	272	14		8	1,136
2006	786	292	10			1,095
2007	809	292	13			1,119
Five-Year Total	4,113	1,506	53	17	21	5,710

Indicates a value < 6

**Residents of GreenLake County
Motor Vehicle Crash Hospitalizations, Hospital Charges and Emergency Room Visits and Charges
2003-2007**

	Auto	Truck	Motorcycle	Bicycle	Pedestrian	Total
2003						
Number of Cases	11			0	0	18
Total Charges	\$217,302	\$103,276	\$38,829	\$0	\$0	\$359,407
2004						
Number of Cases		0		0	0	
Total Charges	\$273,770	\$0	\$32,573	\$0	\$0	\$306,343
2005						
Number of Cases	11	0	0			14
Total Charges	\$502,949	\$0	\$0	\$10,214	\$62,349	\$575,512
2006						
Number of Cases	10			0		13
Total Charges	\$565,106	\$89,817	\$18,770	\$0	\$135,285	\$808,978
2007						
Number of Cases	8			0	0	15
Total Charges	\$200,188	\$296,162	\$45,705	\$0	\$0	\$542,055
Five-YearTotal						
Number of Cases	44	9	9			66
Total Charges	\$1,759,315	\$489,255	\$135,877	\$10,214	\$197,634	\$2,592,295

**Motor Vehicle Crash Emergency Room Visits and Charges
2003-2007**

	Auto	Truck	Motorcycle	Bicycle	Pedestrian	Total
2003						
Number of Cases	69	30			0	105
Total Charges	\$67,623	\$30,016	\$3,714	\$1,671	\$0	\$103,024
2004						
Number of Cases	95	28				132
Total Charges	\$117,598	\$24,603	\$7,350	\$1,226	\$2,477	\$153,254
2005						
Number of Cases	86	20	9			122
Total Charges	\$127,463	\$28,284	\$28,766	\$2,022	\$13,838	\$200,373
2006						
Number of Cases	66	21				96
Total Charges	\$97,693	\$30,812	\$4,111	\$2,146	\$8,907	\$143,669
2007						
Number of Cases	81	29				117
Total Charges	\$139,997	\$79,705	\$14,014	\$2,063		\$235,780
Five -Year Total						
Number of Cases	397	128	25	10	12	455
Total Charges	\$550,374	\$193,420	\$57,955	\$9,128	\$25,223	\$600,320

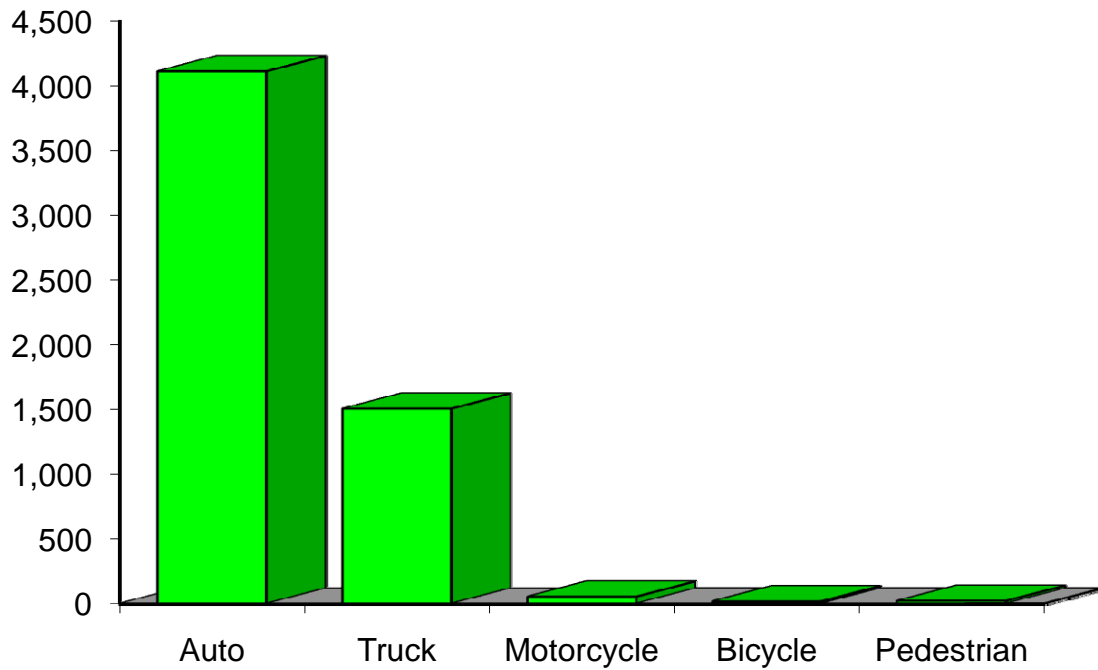
Indicates a value < 6

**Residents of GreenLake County
Motor Vehicle Crash Deaths
2003-2007**

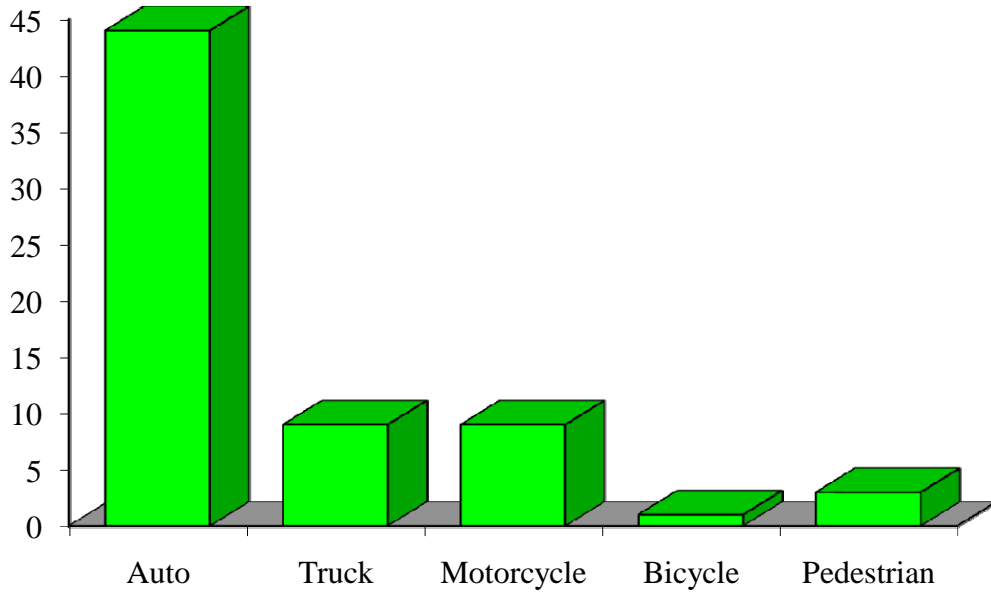
	Auto	Truck	Motorcycle	Bicycle	Pedestrian	Total
2003				0	0	7
2004		0	0	0	0	
2005			0	0	0	
2006			0	0	0	
2007		0	0	0	0	
Five-Year Total	14			0	0	21

Indicates a value < 6

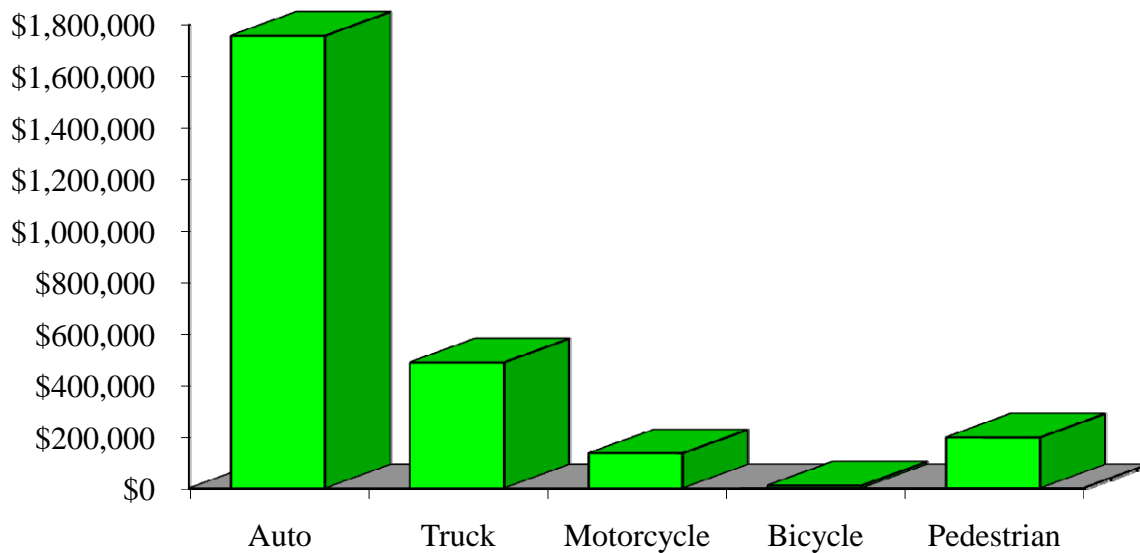
Crash Occupants by Vehicle Type Residents of GreenLake County, 2003-2007



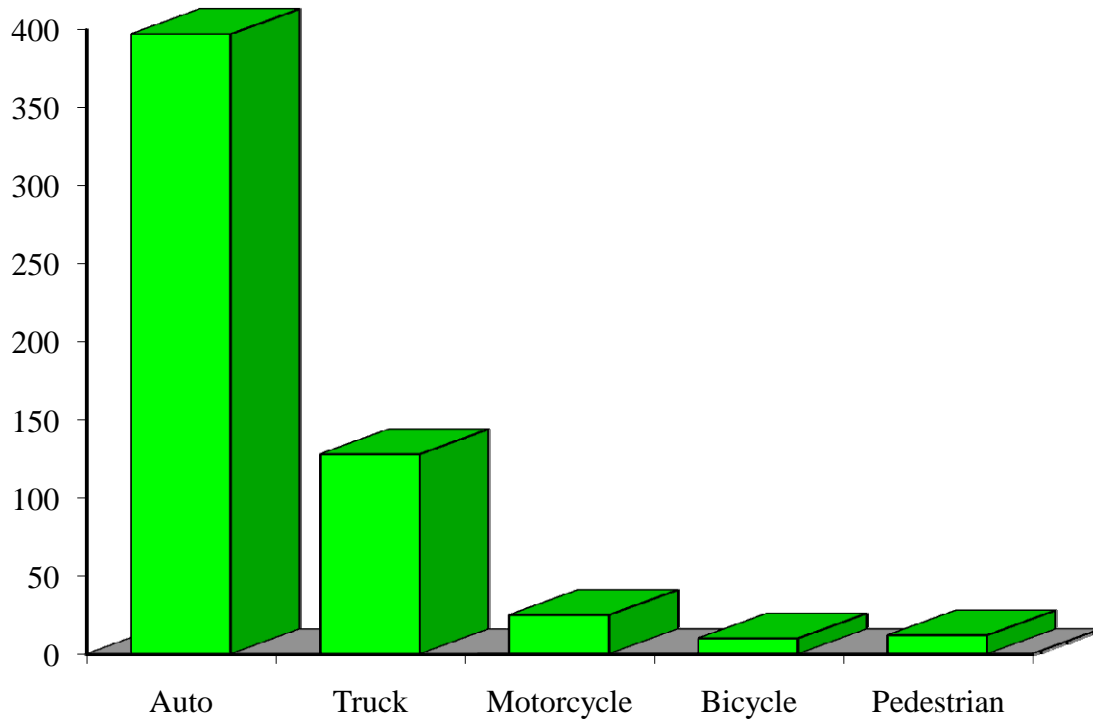
Hospitalizations by Vehicle Type Residents of GreenLake County, 2003-2007



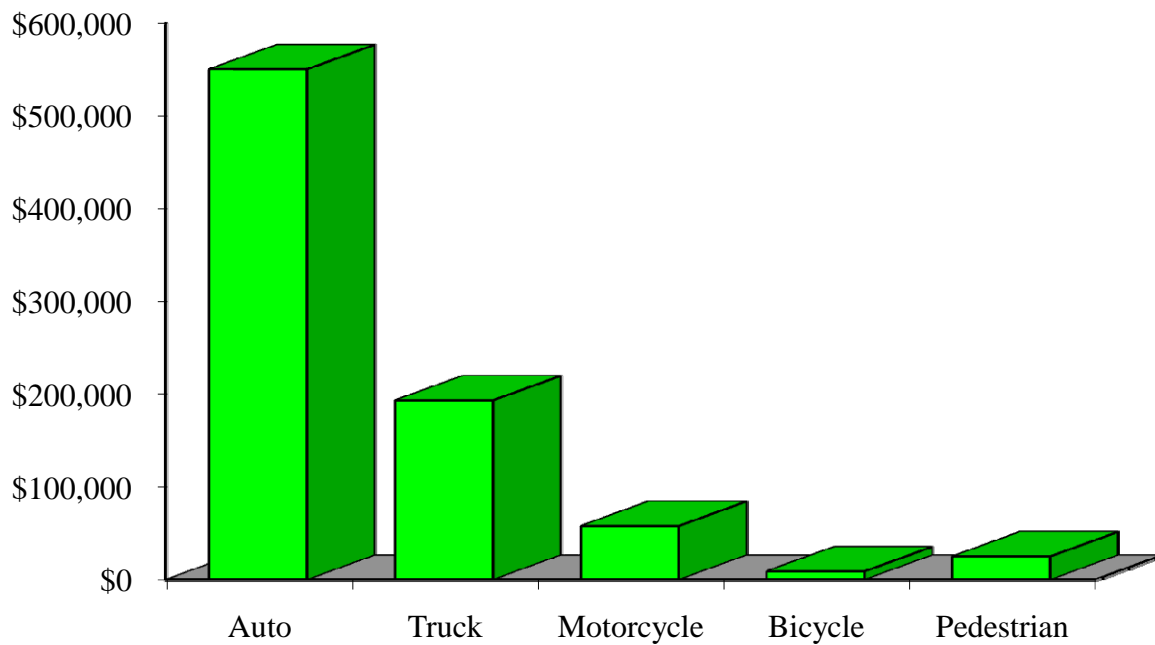
Hospital Charges by Vehicle Type Residents of GreenLake County, 2003-2007



Emergency Room Visits by Vehicle Type Residents of GreenLake County, 2003-2007



Emergency Room Charges by Vehicle Type Residents of GreenLake County, 2003-2007



Residents of GreenLake County and All Wisconsin 'Crash Occupants'

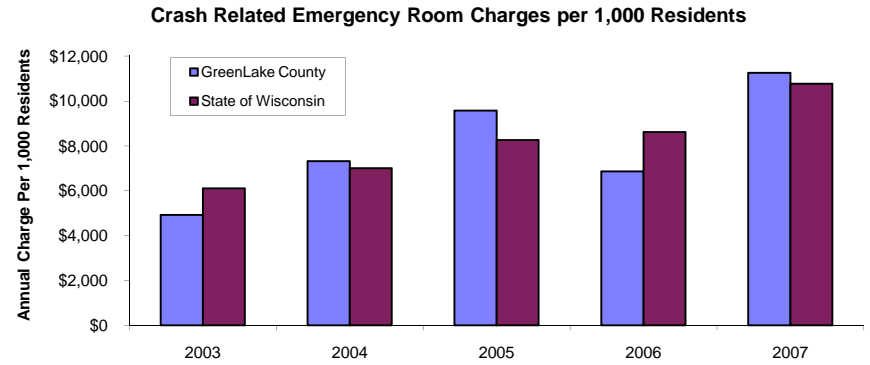
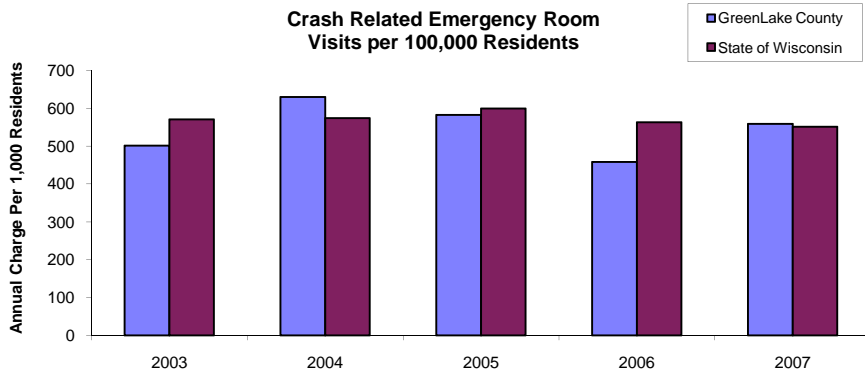
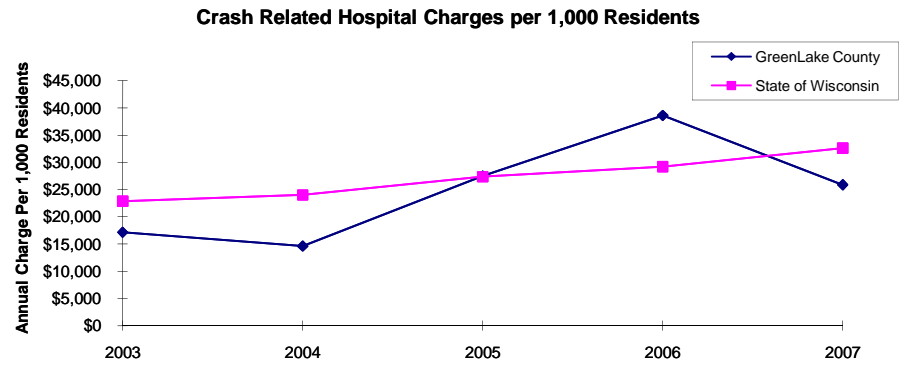
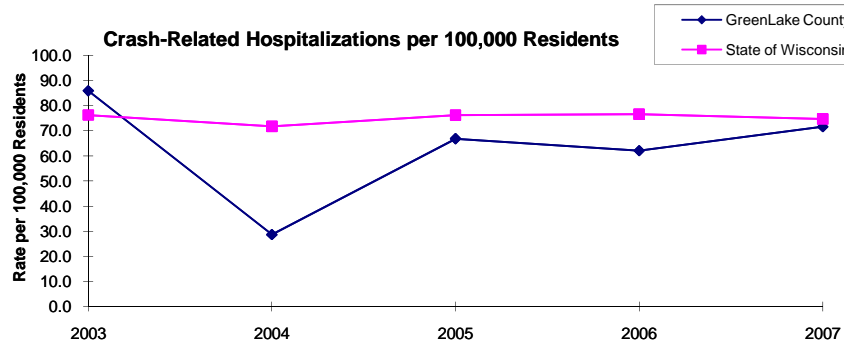
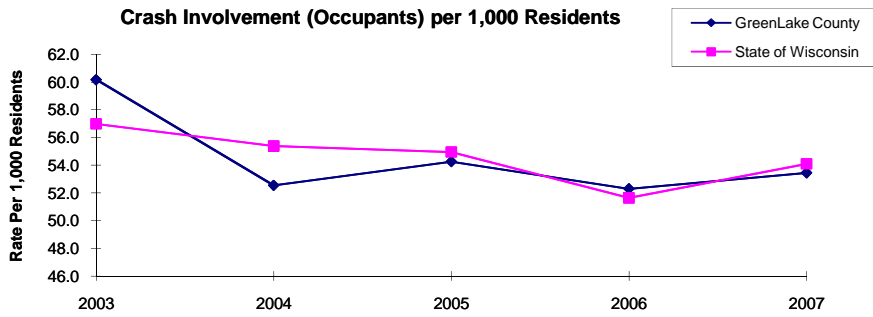
Crash Involvement Rates and Costs

2003-2007

	2003	2004	2005	2006	2007	Average
Annual Crash Involvement						
<i>GreenLake County</i>						
Crash Occupants	1,260	1,100	1,136	1,095	1,119	1,142
<i>Rate per 1,000 Residents</i>	60.2	52.5	54.3	52.3	53.4	54.5
<i>State of Wisconsin</i>						
Crash Occupants	316,298	307,373	305,007	286,608	300,270	303,111
<i>Rate per 1,000 Residents</i>	57.0	55.4	55.0	51.6	54.1	54.6
Annual Crash-Related Hospitalizations						
<i>GreenLake County</i>						
Crash-Related Hospitalizations	18		14	13	15	13
<i>Rate per 100,000 Residents*</i>	86.0	28.7	66.9	62.1	71.6	63.0
<i>State of Wisconsin</i>						
Crash-Related Hospitalizations	4,234	3,983	4,232	4,253	4,146	4,170
<i>Rate per 100,000 Residents*</i>	76.3	71.8	76.3	76.6	74.7	75.1
Annual Crash-Related Hospital Charges						
<i>GreenLake County</i>						
Total Crash Injury Hospital Charges	\$359,407	\$306,343	\$575,512	\$808,978	\$542,055	\$518,459
<i>Annual Charge per 1,000 Residents</i>	\$17,166	\$14,631	\$27,487	\$38,638	\$25,889	\$24,762
<i>State of Wisconsin</i>						
Total Crash Injury Hospital Charges	\$126,881,405	\$133,270,653	\$151,898,242	\$162,208,759	\$181,072,379	\$151,066,288
<i>Annual Charge per 1,000 Residents</i>	\$22,861	\$24,012	\$27,368	\$29,226	\$32,625	\$27,219
Annual Crash-Related Emergency Room Visits						
<i>GreenLake County</i>						
Crash-Related Emergency Room Visits	105	132	122	96	117	117
<i>Rate per 100,000 Residents*</i>	501.5	630.5	582.7	458.5	558.8	557.6
<i>State of Wisconsin</i>						
Crash-Related Emergency Room Visits	31,664	31,866	33,269	31,268	30,615	\$31,755
<i>Rate per 100,000 Residents*</i>	570.5	574.1	599.4	563.4	551.6	572.1
Annual Crash-Related Emergency Room Charges						
<i>GreenLake County</i>						
Total Crash Injury Emergency Room Charges	\$103,024	\$153,254	\$200,373	\$143,669	\$235,780	\$183,269
<i>Annual ER Charge per 1,000 Residents</i>	\$4,921	\$7,320	\$9,570	\$6,862	\$11,261	\$8,753
<i>State of Wisconsin</i>						
Crash Injury Emergency Room Charges	\$33,900,299	\$38,900,194	\$45,882,386	\$47,860,521	\$59,808,628	\$48,112,932
<i>Annual ER Charge per 1,000 Residents</i>	6,108	\$7,009	\$8,267	\$8,623	\$10,776	\$8,669
Average Annual Population (computed 2003-2007 population estimates)						
<i>GreenLake County</i>	20,937	* Reported as a rate per 100,000 residents to better highlight				
<i>State of Wisconsin</i>	5,550,118	variations: 1.12 per 1,000 = 112 per 100,000.				

Population data estimates are available at the Demographic Services Center, Wisconsin Department of Administration

Residents of GreenLake County



Zipcodes included in County of Resident Reports

Residents of GreenLake County

53926	53939
53945	53946
53947	54923
54941	54968