
Residents of Jefferson County

Motor Vehicle Crash Occupants, Hospitalizations, Emergency Room Visits and Fatalities 2003-2007

	Auto	Truck	Motorcycle	Bicycle	Pedestrian	Total
Crash Occupants	14,031	4,046	207	76	105	18,465
Hospitalized Cases	214	54	50	7	16	341
Hospital Charges	\$8,989,205	\$2,914,852	\$3,030,801	\$167,468	\$586,317	\$15,688,643
Emergency Room Visits	1,529	306	86	45	62	1,657
Emergency Room Charges	\$2,041,327	\$444,754	\$177,372	\$49,441	\$58,889	\$2,115,219
Deaths	34	7	9	1	3	54

Indicates a value < 6

**Residents of Jefferson County
Hospitalization Charges by Vehicle Type
2003-2007**

	Auto	Truck	Motorcycle	Bicycle	Pedestrian
Hospital Charges	\$8,989,205	\$2,914,852	\$3,030,801	\$167,468	\$586,317
Total Crash Occupants	14,031	4,046	207	76	105
Hospital Charge/Occupant	\$640.67	\$720.43	\$14,641.55	\$2,203.53	\$5,583.97

**Hospitalization Rates by Vehicle Type
2003-2007**

	Auto	Truck	Motorcycle	Bicycle	Pedestrian
Hospital Cases	214	54	50	7	16
Total Crash Occupants	14,031	4,046	207	76	105
Hospitalization Rate/Crash Occupant	1.5%	1.3%	24.2%	9.2%	15.2%

**Emergency Room Charges by Vehicle Type
2003-2007**

	Auto	Truck	Motorcycle	Bicycle	Pedestrian
ER Charges	\$2,041,327	\$444,754	\$177,372	\$49,441	\$58,889
Crash Occupants	14,031	4,046	207	76	105
Emergency Room Charges/Crash Occupant	\$145	\$110	\$857	\$651	\$561

**Emergency Room Visits by Vehicle Type
2003-2007**

	Auto	Truck	Motorcycle	Bicycle	Pedestrian
Emergency Room Visits	1,529	306	86	45	62
Total Crash Occupants	14,031	4,046	207	76	105
Emergency Room Rate/Crash Occupant	10.9%	7.6%	41.5%	59.2%	59.0%

Indicates a value < 4

**Residents of Jefferson County
Occupants of Motor Vehicle Crashes
2003-2007**

	Auto	Truck	Motorcycle	Bicycle	Pedestrian	Total
2003	2,900	828	34	14	24	3,800
2004	2,805	769	44	20	16	3,654
2005	2,819	874	47	15	18	3,773
2006	2,648	817	44	11	28	3,548
2007	2,859	758	38	16	19	3,690
Five-Year Total	14,031	4,046	207	76	105	18,465

Indicates a value < 6

Residents of Jefferson County
Motor Vehicle Crash Hospitalizations, Hospital Charges and Emergency Room Visits and Charges
2003-2007

	Auto	Truck	Motorcycle	Bicycle	Pedestrian	Total
2003						
Number of Cases	41	15	7			70
Total Charges	\$1,412,073	\$453,661	\$309,793	\$73,637	\$90,324	\$2,339,488
2004						
Number of Cases	51		11	0		70
Total Charges	\$1,868,546	\$310,453	\$571,299	\$0	\$233,794	\$2,984,092
2005						
Number of Cases	41	11	13			69
Total Charges	\$1,694,377	\$560,577	\$1,156,339	\$10,116	\$47,245	\$3,468,654
2006						
Number of Cases	46	12	10			73
Total Charges	\$2,623,690	\$1,115,842	\$669,504	\$34,765	\$111,728	\$4,555,529
2007						
Number of Cases	35	10	9			59
Total Charges	\$1,390,519	\$474,319	\$323,866	\$48,950	\$103,226	\$2,340,880
Five-YearTotal						
Number of Cases	214	54	50	7	16	341
Total Charges	\$8,989,205	\$2,914,852	\$3,030,801	\$167,468	\$586,317	\$15,688,643

Motor Vehicle Crash Emergency Room Visits and Charges
2003-2007

	Auto	Truck	Motorcycle	Bicycle	Pedestrian	Total
2003						
Number of Cases	308	65	14	7	16	410
Total Charges	\$283,490	\$80,122	\$12,150	\$10,686	\$13,432	\$399,880
2004						
Number of Cases	296	58	17	15	9	395
Total Charges	\$378,740	\$62,499	\$29,616	\$13,079	\$11,644	\$495,578
2005						
Number of Cases	341	66	20	9	10	446
Total Charges	\$434,781	\$101,693	\$52,650	\$8,517	\$13,112	\$610,753
2006						
Number of Cases	295	71	16		18	406
Total Charges	\$465,604	\$102,056	\$15,887	\$4,769	\$20,692	\$609,008
2007						
Number of Cases	289	46	19	8	9	371
Total Charges	\$478,712	\$98,384	\$67,069	\$12,390	\$9	\$656,564
Five -Year Total						
Number of Cases	1,529	306	86	45	62	1,657
Total Charges	\$2,041,327	\$444,754	\$177,372	\$49,441	\$58,889	\$2,115,219

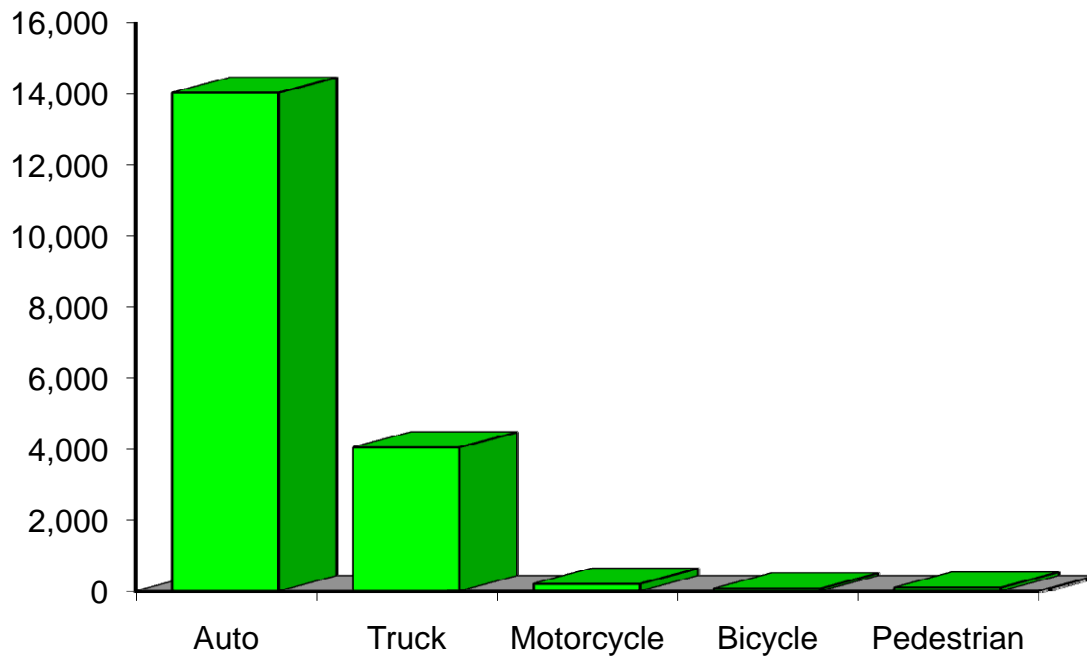
Indicates a value < 6

**Residents of Jefferson County
Motor Vehicle Crash Deaths
2003-2007**

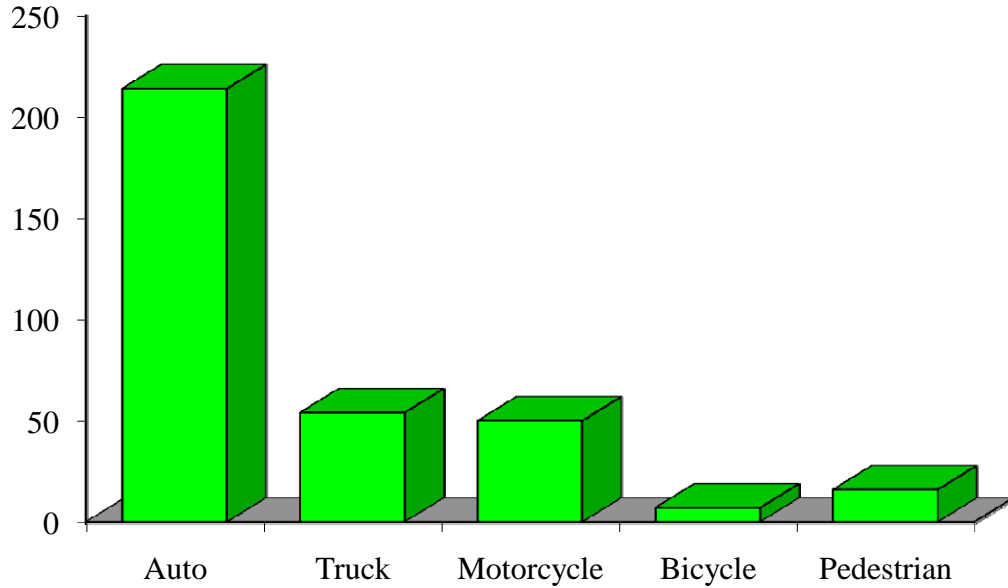
	Auto	Truck	Motorcycle	Bicycle	Pedestrian	Total
2003				0	0	8
2004	8					13
2005	7	0		0	0	9
2006				0		11
2007	9		0	0		13
Five-Year Total	34	7	9			54

Indicates a value < 6

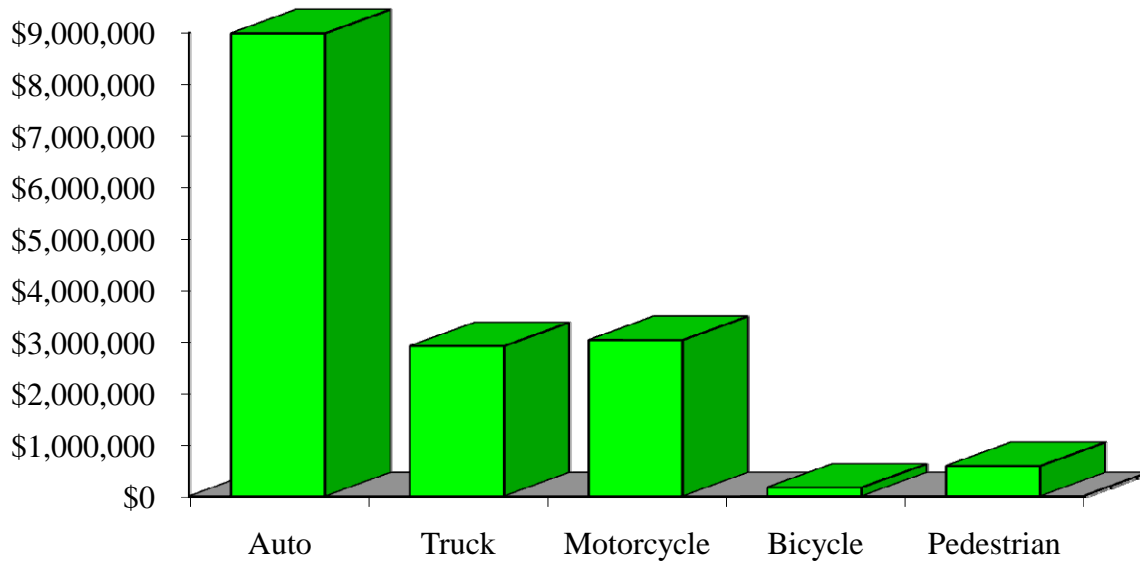
Crash Occupants by Vehicle Type Residents of Jefferson County, 2003-2007



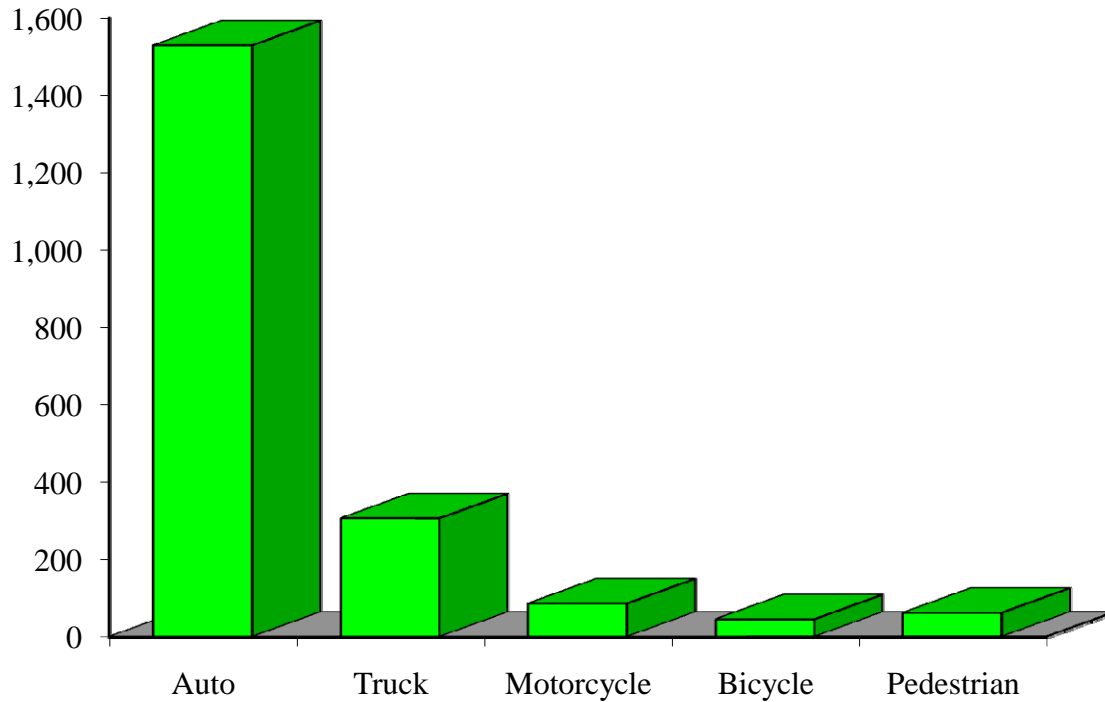
Hospitalizations by Vehicle Type Residents of Jefferson County, 2003-2007



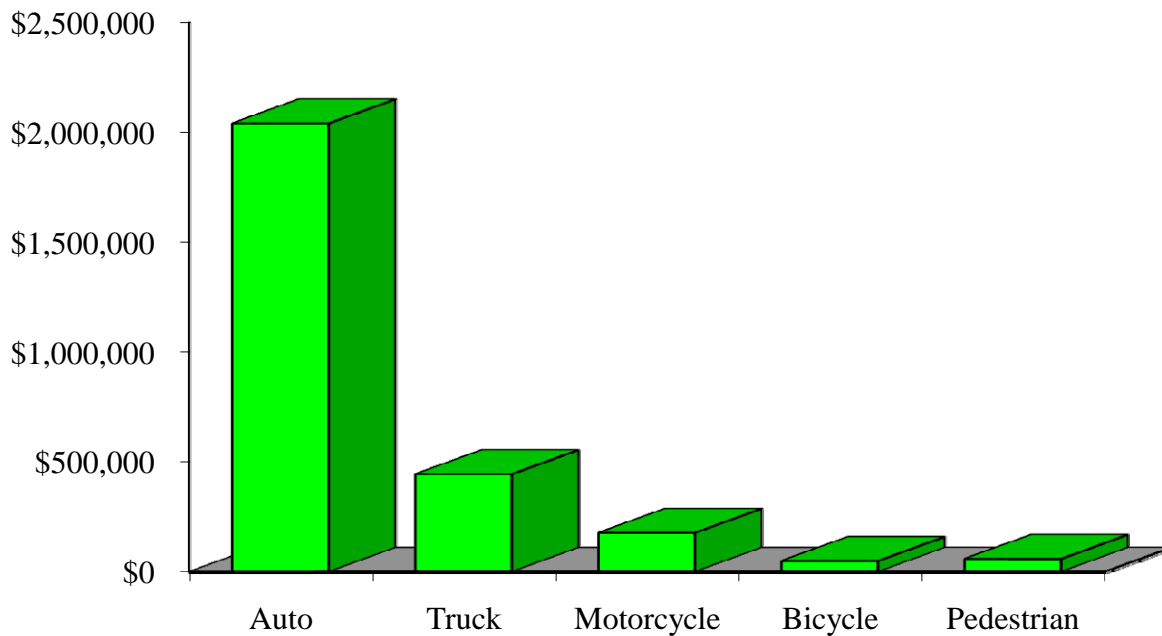
Hospital Charges by Vehicle Type Residents of Jefferson County, 2003-2007



Emergency Room Visits by Vehicle Type Residents of Jefferson County, 2003-2007



Emergency Room Charges by Vehicle Type Residents of Jefferson County, 2003-2007



Residents of Jefferson County and All Wisconsin 'Crash Occupants'

Crash Involvement Rates and Costs

2003-2007

	2003	2004	2005	2006	2007	Average
--	-------------	-------------	-------------	-------------	-------------	----------------

Annual Crash Involvement

<i>Jefferson County</i>						
Crash Occupants	3,800	3,654	3,773	3,548	3,690	3,693
<i>Rate per 1,000 Residents</i>	53.0	51.0	52.7	49.5	51.5	51.5

State of Wisconsin

Crash Occupants	316,298	307,373	305,007	286,608	300,270	303,111
<i>Rate per 1,000 Residents</i>	57.0	55.4	55.0	51.6	54.1	54.6

Annual Crash-Related Hospitalizations

<i>Jefferson County</i>						
Crash-Related Hospitalizations	70	70	69	73	59	68
<i>Rate per 100,000 Residents*</i>	97.7	97.7	96.3	101.9	82.3	95.2

State of Wisconsin

Crash-Related Hospitalizations	4,234	3,983	4,232	4,253	4,146	4,170
<i>Rate per 100,000 Residents*</i>	76.3	71.8	76.3	76.6	74.7	75.1

Annual Crash-Related Hospital Charges

<i>Jefferson County</i>						
Total Crash Injury Hospital Charges	\$2,339,488	\$2,984,092	\$3,468,654	\$4,555,529	\$2,340,880	\$3,137,729
<i>Annual Charge per 1,000 Residents</i>	\$32,647	\$41,642	\$48,404	\$63,572	\$32,667	\$43,786

State of Wisconsin

Total Crash Injury Hospital Charges	\$126,881,405	\$133,270,653	\$151,898,242	\$162,208,759	\$181,072,379	\$151,066,288
<i>Annual Charge per 1,000 Residents</i>	\$22,861	\$24,012	\$27,368	\$29,226	\$32,625	\$27,219

Annual Crash-Related Emergency Room Visits

<i>Jefferson County</i>						
Crash-Related Emergency Room Visits	410	395	446	406	371	405
<i>Rate per 100,000 Residents*</i>	572.1	551.2	622.4	566.6	517.7	564.5

State of Wisconsin

Crash-Related Emergency Room Visits	31,664	31,866	33,269	31,268	30,615	\$31,755
<i>Rate per 100,000 Residents*</i>	570.5	574.1	599.4	563.4	551.6	572.1

Annual Crash-Related Emergency Room Charges

<i>Jefferson County</i>						
Total Crash Injury Emergency Room Charges	\$399,880	\$495,578	\$610,753	\$609,008	\$656,564	\$592,976
<i>Annual ER Charge per 1,000 Residents</i>	\$5,580	\$6,916	\$8,523	\$8,499	\$9,162	\$8,275

State of Wisconsin

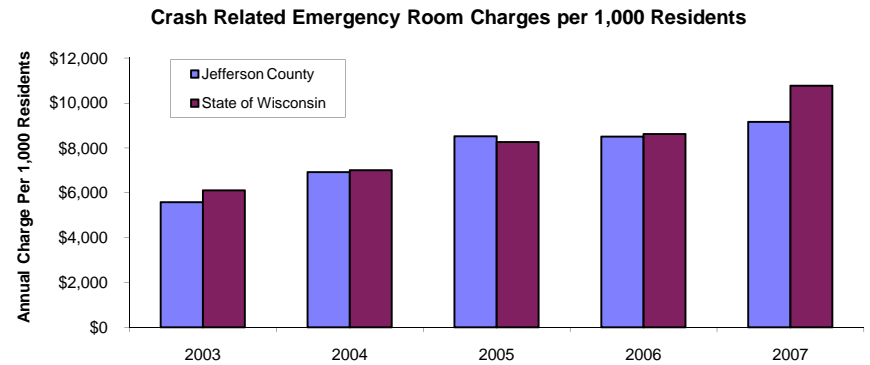
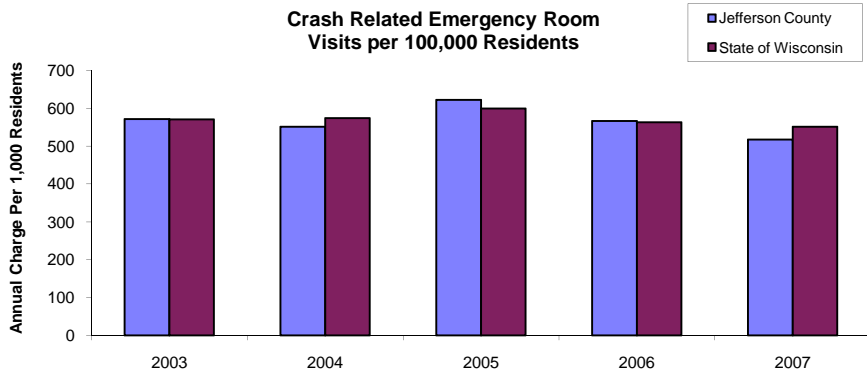
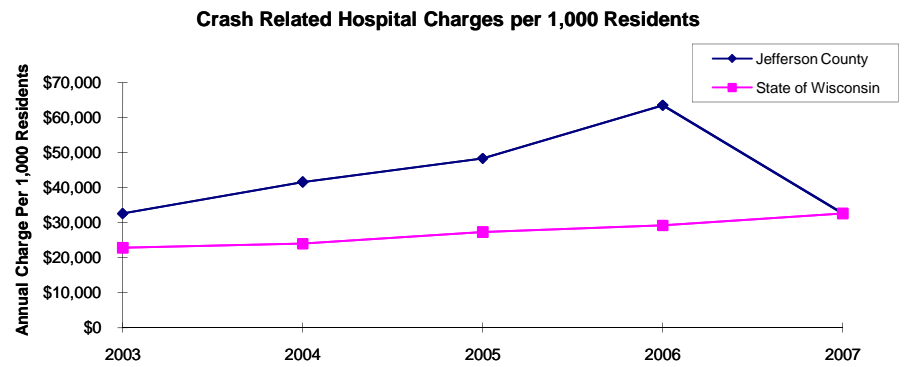
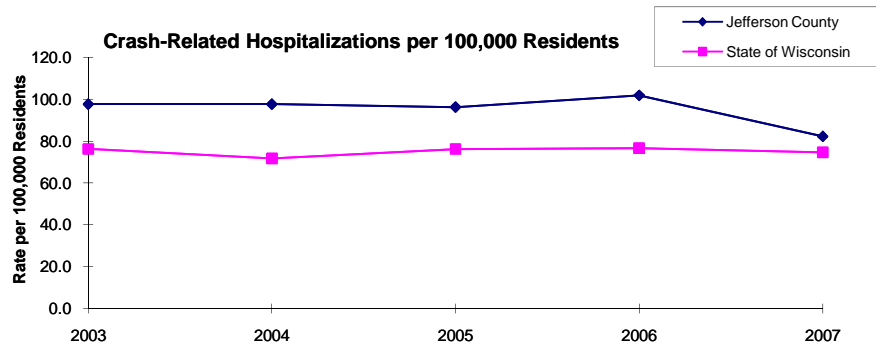
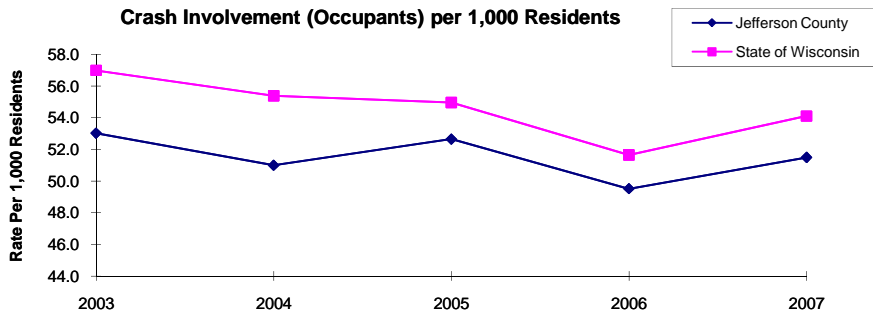
Crash Injury Emergency Room Charges	\$33,900,299	\$38,900,194	\$45,882,386	\$47,860,521	\$59,808,628	\$48,112,932
<i>Annual ER Charge per 1,000 Residents</i>	6,108	\$7,009	\$8,267	\$8,623	\$10,776	\$8,669

Average Annual Population (computed 2003-2007 population estimates)

<i>Jefferson County</i>	71,660	* Reported as a rate per 100,000 residents to better highlight
<i>State of Wisconsin</i>	5,550,118	variations: 1.12 per 1,000 = 112 per 100,000.

Population data estimates are available at the Demographic Services Center, Wisconsin Department of Administration

Residents of Jefferson County



Zipcodes included in County of Resident Reports

Residents of Jefferson County

53036	53038
53094	53137
53156	53178
53538	53549
53551	53594