
Residents of Milwaukee County

Motor Vehicle Crash Occupants, Hospitalizations, Emergency Room Visits and Fatalities 2003-2007

	Auto	Truck	Motorcycle	Bicycle	Pedestrian	Total
Crash Occupants	230,131	25,256	2,084	1,354	3,456	262,281
Hospitalized Cases	2,012	143	375	98	593	3,221
Hospital Charges	\$67,162,266	\$4,644,256	\$18,735,019	\$2,515,435	\$25,751,049	\$118,808,025
Emergency Room Visits	31,692	1,859	1,023	750	2,065	30,022
Emergency Room Charges	\$44,676,758	\$3,155,546	\$2,785,791	\$1,051,677	\$2,609,146	\$41,491,856
Deaths	206	29	43	4	88	370

Indicates a value < 6

**Residents of Milwaukee County
Hospitalization Charges by Vehicle Type
2003-2007**

	Auto	Truck	Motorcycle	Bicycle	Pedestrian
Hospital Charges	\$67,162,266	\$4,644,256	\$18,735,019	\$2,515,435	\$25,751,049
Total Crash Occupants	230,131	25,256	2,084	1,354	3,456
Hospital Charge/Occupant	\$291.84	\$183.89	\$8,989.93	\$1,857.78	\$7,451.11

**Hospitalization Rates by Vehicle Type
2003-2007**

	Auto	Truck	Motorcycle	Bicycle	Pedestrian
Hospital Cases	2,012	143	375	98	593
Total Crash Occupants	230,131	25,256	2,084	1,354	3,456
Hospitalization Rate/Crash Occupant	0.9%	0.6%	18.0%	7.2%	17.2%

**Emergency Room Charges by Vehicle Type
2003-2007**

	Auto	Truck	Motorcycle	Bicycle	Pedestrian
ER Charges	\$44,676,758	\$3,155,546	\$2,785,791	\$1,051,677	\$2,609,146
Crash Occupants	230,131	25,256	2,084	1,354	3,456
Emergency Room Charges/Crash Occupant	\$194	\$125	\$1,337	\$777	\$755

**Emergency Room Visits by Vehicle Type
2003-2007**

	Auto	Truck	Motorcycle	Bicycle	Pedestrian
Emergency Room Visits	31,692	1,859	1,023	750	2,065
Total Crash Occupants	230,131	25,256	2,084	1,354	3,456
Emergency Room Rate/Crash Occupant	13.8%	7.4%	49.1%	55.4%	59.8%

Indicates a value < 4

**Residents of Milwaukee County
Occupants of Motor Vehicle Crashes
2003-2007**

	Auto	Truck	Motorcycle	Bicycle	Pedestrian	Total
2003	46,795	5,102	433	291	713	53,334
2004	46,452	5,066	378	281	655	52,832
2005	44,874	5,212	470	262	654	51,472
2006	44,860	4,843	378	249	721	51,051
2007	47,150	5,033	425	271	713	53,592
Five-Year Total	230,131	25,256	2,084	1,354	3,456	262,281

Indicates a value < 6

Residents of Milwaukee County
Motor Vehicle Crash Hospitalizations, Hospital Charges and Emergency Room Visits and Charges
2003-2007

	Auto	Truck	Motorcycle	Bicycle	Pedestrian	Total
2003						
Number of Cases	396	21	70	21	104	612
Total Charges	\$12,816,891	\$669,115	\$2,552,284	\$530,898	\$3,029,575	\$19,598,763
2004						
Number of Cases	353	31	79	19	111	593
Total Charges	\$10,854,513	\$702,085	\$3,767,928	\$328,445	\$5,059,963	\$20,712,934
2005						
Number of Cases	413	33	69	14	115	644
Total Charges	\$13,157,141	\$922,448	\$3,623,891	\$237,443	\$4,462,476	\$22,403,399
2006						
Number of Cases	443	36	75	25	137	716
Total Charges	\$15,019,013	\$1,336,532	\$3,795,979	\$842,038	\$7,449,434	\$28,442,996
2007						
Number of Cases	407	22	82	19	126	656
Total Charges	\$15,314,708	\$1,014,076	\$4,994,937	\$576,611	\$5,749,601	\$27,649,933
Five-YearTotal						
Number of Cases	2,012	143	375	98	593	3,221
Total Charges	\$67,162,266	\$4,644,256	\$18,735,019	\$2,515,435	\$25,751,049	\$118,808,025

Motor Vehicle Crash Emergency Room Visits and Charges
2003-2007

	Auto	Truck	Motorcycle	Bicycle	Pedestrian	Total
2003						
Number of Cases	5,659	315	214	149	439	6,776
Total Charges	\$6,735,254	\$435,416	\$508,012	\$183,997	\$560,732	\$8,423,411
2004						
Number of Cases	6,287	382	176	155	388	7,388
Total Charges	\$7,657,242	\$565,304	\$407,369	\$207,084	\$577,825	\$9,414,824
2005						
Number of Cases	6,887	404	245	169	387	8,092
Total Charges	\$9,223,311	\$592,432	\$553,952	\$207,719	\$661,373	\$11,238,787
2006						
Number of Cases	6,637	385	183	127	434	7,766
Total Charges	\$10,059,834	\$744,780	\$574,053	\$227,368	\$808,799	\$12,414,834
2007						
Number of Cases	6,222	373	205	150	417	7,367
Total Charges	\$11,001,117	\$817,614	\$742,405	\$225,509	\$417	\$12,787,062
Five -Year Total						
Number of Cases	31,692	1,859	1,023	750	2,065	30,022
Total Charges	\$44,676,758	\$3,155,546	\$2,785,791	\$1,051,677	\$2,609,146	\$41,491,856

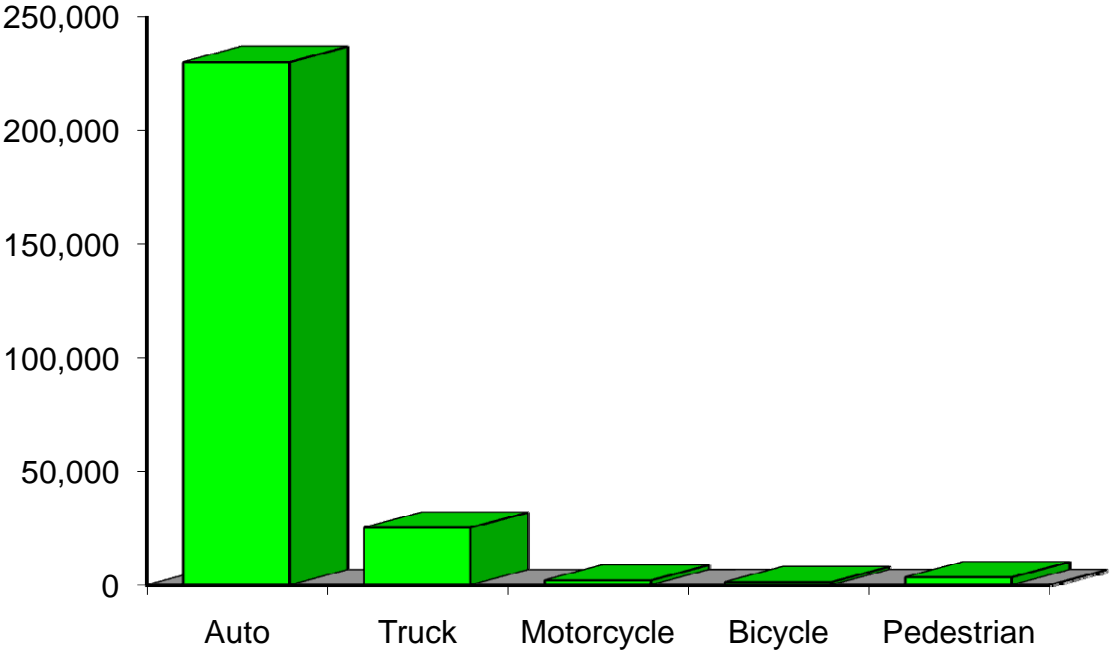
Indicates a value < 6

**Residents of Milwaukee County
Motor Vehicle Crash Deaths
2003-2007**

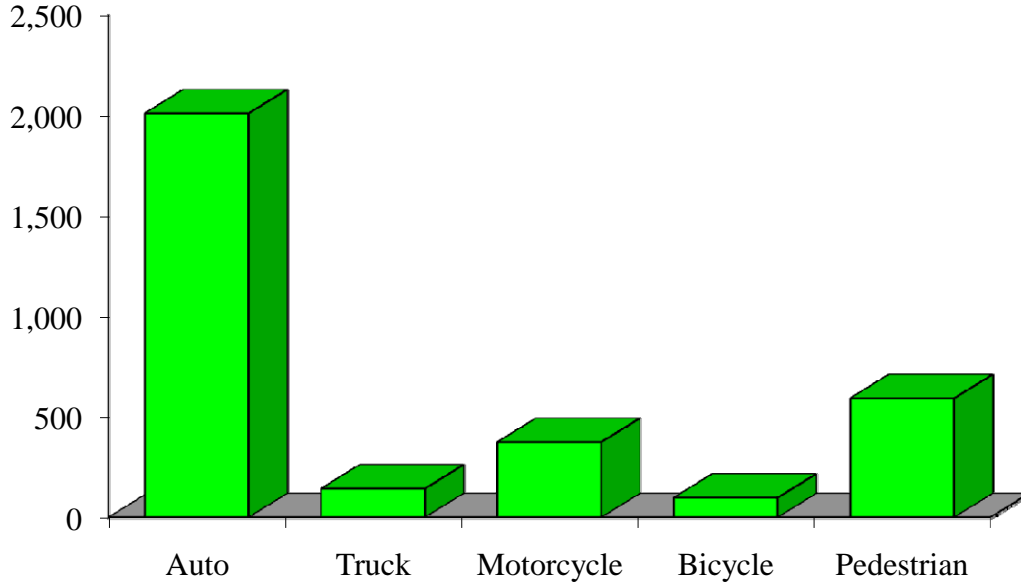
	Auto	Truck	Motorcycle	Bicycle	Pedestrian	Total
2003	48	7	9	0	12	76
2004	43	10	11		23	89
2005	45		7	0	12	68
2006	36		11		18	71
2007	34			0	23	66
Five-Year Total	206	29	43		88	370

Indicates a value < 6

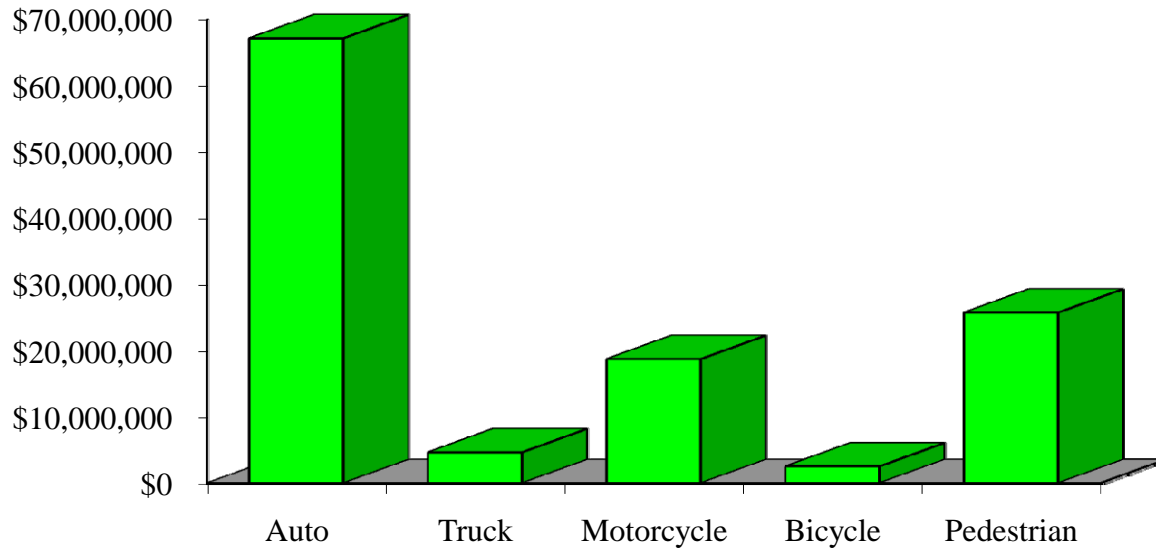
Crash Occupants by Vehicle Type Residents of Milwaukee County, 2003-2007



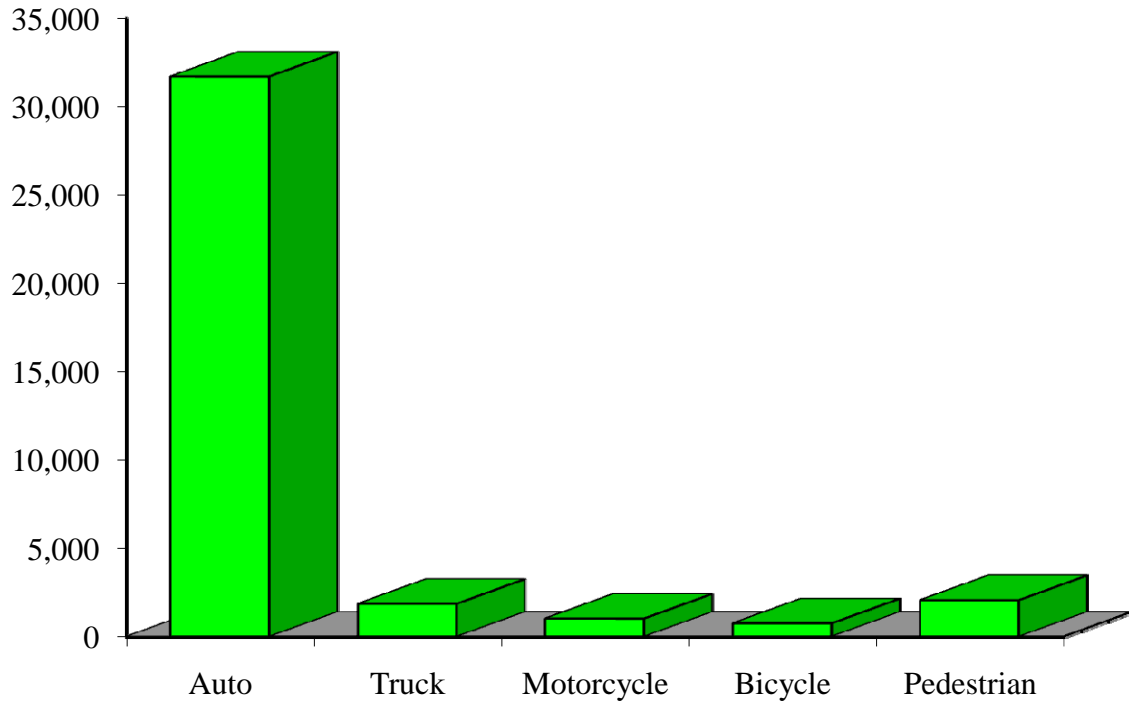
Hospitalizations by Vehicle Type Residents of Milwaukee County, 2003-2007



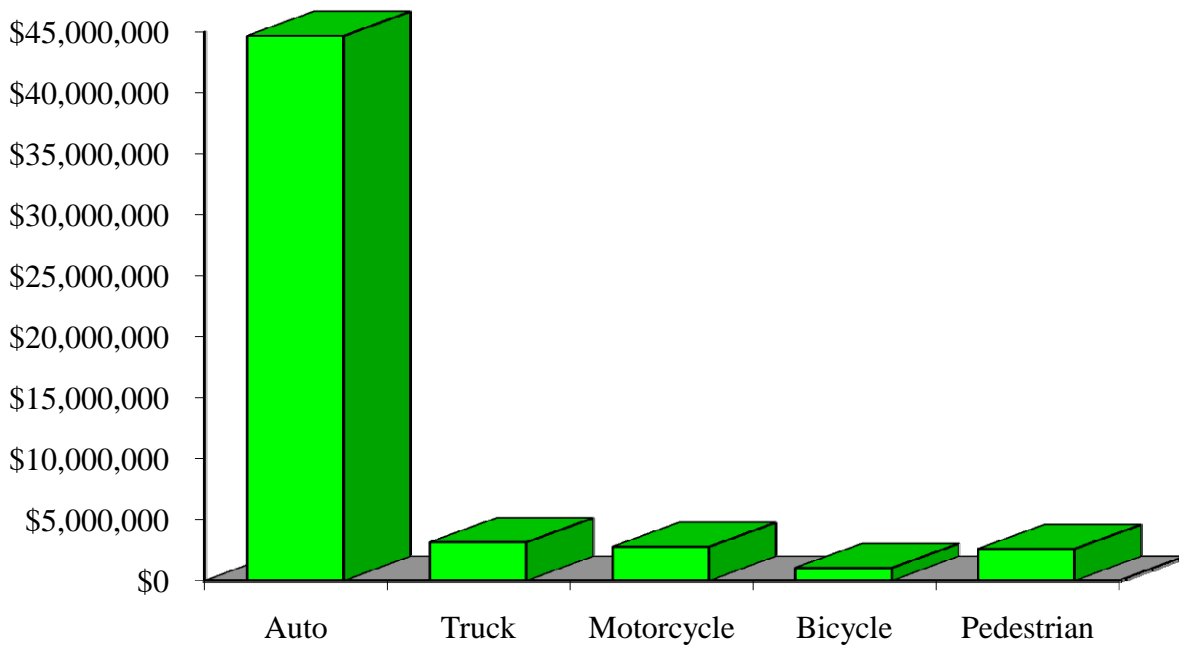
Hospital Charges by Vehicle Type Residents of Milwaukee County, 2003-2007



Emergency Room Visits by Vehicle Type Residents of Milwaukee County, 2003-2007



Emergency Room Charges by Vehicle Type Residents of Milwaukee County, 2003-2007



Residents of Milwaukee County and All Wisconsin 'Crash Occupants'

Crash Involvement Rates and Costs

2003-2007

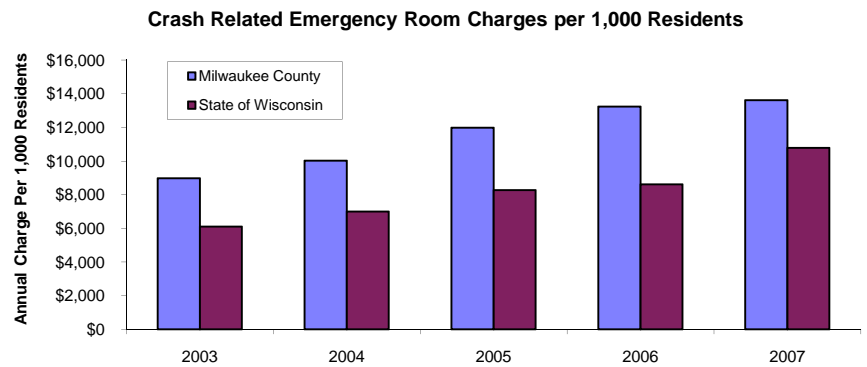
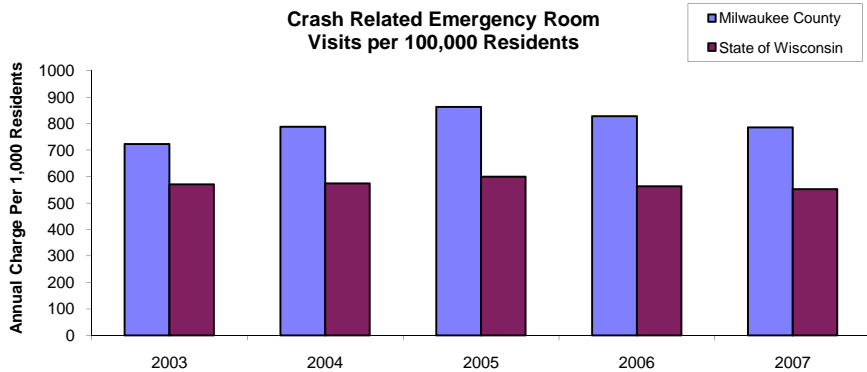
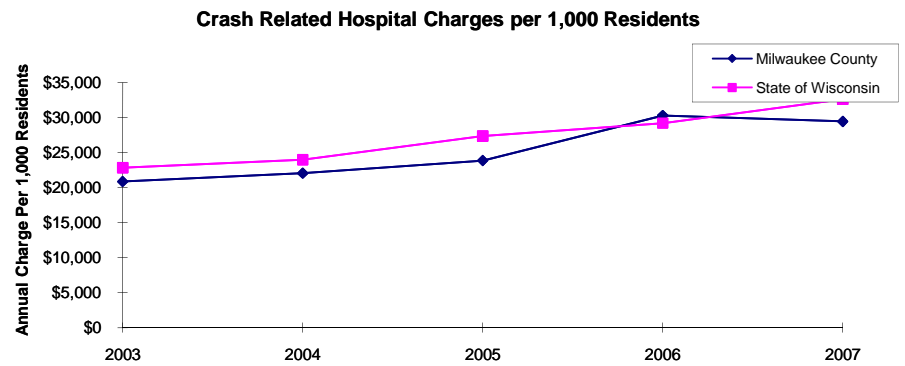
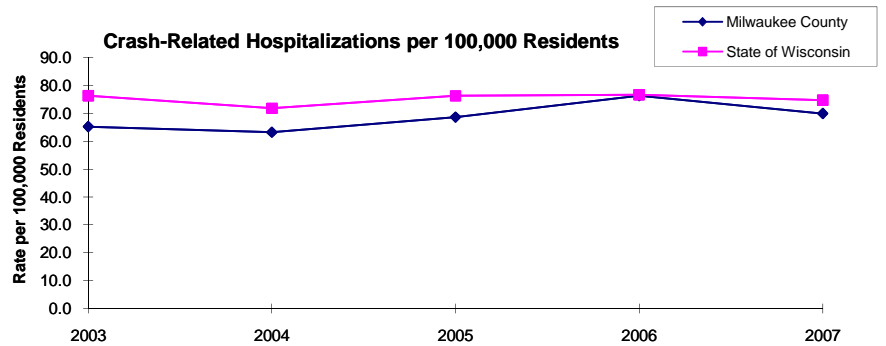
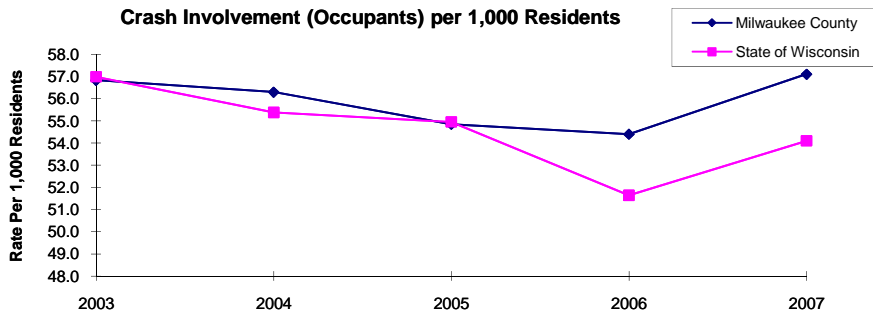
	2003	2004	2005	2006	2007	Average
Annual Crash Involvement						
Milwaukee County						
Crash Occupants	53,334	52,832	51,472	51,051	53,592	52,456
<i>Rate per 1,000 Residents</i>	56.8	56.3	54.8	54.4	57.1	55.9
State of Wisconsin						
Crash Occupants	316,298	307,373	305,007	286,608	300,270	303,111
<i>Rate per 1,000 Residents</i>	57.0	55.4	55.0	51.6	54.1	54.6
Annual Crash-Related Hospitalizations						
Milwaukee County						
Crash-Related Hospitalizations	612	593	644	716	656	644
<i>Rate per 100,000 Residents*</i>	65.2	63.2	68.6	76.3	69.9	68.6
State of Wisconsin						
Crash-Related Hospitalizations	4,234	3,983	4,232	4,253	4,146	4,170
<i>Rate per 100,000 Residents*</i>	76.3	71.8	76.3	76.6	74.7	75.1
Annual Crash-Related Hospital Charges						
Milwaukee County						
Total Crash Injury Hospital Charges	\$19,598,763	\$20,712,934	\$22,403,399	\$28,442,996	\$27,649,933	\$23,761,605
<i>Annual Charge per 1,000 Residents</i>	\$20,885	\$22,072	\$23,873	\$30,309	\$29,464	\$25,321
State of Wisconsin						
Total Crash Injury Hospital Charges	\$126,881,405	\$133,270,653	\$151,898,242	\$162,208,759	\$181,072,379	\$151,066,288
<i>Annual Charge per 1,000 Residents</i>	\$22,861	\$24,012	\$27,368	\$29,226	\$32,625	\$27,219
Annual Crash-Related Emergency Room Visits						
Milwaukee County						
Crash-Related Emergency Room Visits	6776	7,388	8092	7,766	7,367	7,653
<i>Rate per 100,000 Residents*</i>	722.1	787.3	862.3	827.6	785.0	815.5
State of Wisconsin						
Crash-Related Emergency Room Visits	31,664	31,866	33,269	31,268	30,615	\$31,755
<i>Rate per 100,000 Residents*</i>	570.5	574.1	599.4	563.4	551.6	572.1
Annual Crash-Related Emergency Room Charges						
Milwaukee County						
Total Crash Injury Emergency Room Charges	\$8,423,411	\$9,414,824	\$11,238,787	\$12,414,834	\$12,787,062	\$11,463,877
<i>Annual ER Charge per 1,000 Residents</i>	\$8,976	\$10,033	\$11,976	\$13,229	\$13,626	\$12,216
State of Wisconsin						
Crash Injury Emergency Room Charges	\$33,900,299	\$38,900,194	\$45,882,386	\$47,860,521	\$59,808,628	\$48,112,932
<i>Annual ER Charge per 1,000 Residents</i>	6,108	\$7,009	\$8,267	\$8,623	\$10,776	\$8,669

Average Annual Population (computed 2003-2007 population estimates)

<i>Milwaukee County</i>	938,427	* Reported as a rate per 100,000 residents to better highlight
<i>State of Wisconsin</i>	5,550,118	variations: 1.12 per 1,000 = 112 per 100,000.

Population data estimates are available at the Demographic Services Center, Wisconsin Department of Administration

Residents of Milwaukee County



Zipcodes included in County of Resident Reports

Residents of Milwaukee County

53110	53129
53130	53131
53132	53154
53172	53200-53295