

---

## Residents of Outagamie County

### Motor Vehicle Crash Occupants, Hospitalizations, Emergency Room Visits and Fatalities 2003-2007

	<b>Auto</b>	<b>Truck</b>	<b>Motorcycle</b>	<b>Bicycle</b>	<b>Pedestrian</b>	<b>Total</b>
Crash Occupants	37,894	8,823	639	272	207	47,835
Hospitalized Cases	324	80	129	19	30	582
Hospital Charges	\$9,446,215	\$2,716,291	\$4,471,889	\$978,247	\$1,368,533	\$18,981,175
Emergency Room Visits	3,837	635	269	127	105	4,005
Emergency Room Charges	\$3,574,256	\$739,792	\$449,198	\$145,215	\$89,835	\$3,740,370
Deaths	76	30	11	3	6	126

Indicates a value < 6

**Residents of Outagamie County  
Hospitalization Charges by Vehicle Type  
2003-2007**

	<b>Auto</b>	<b>Truck</b>	<b>Motorcycle</b>	<b>Bicycle</b>	<b>Pedestrian</b>
Hospital Charges	\$9,446,215	\$2,716,291	\$4,471,889	\$978,247	\$1,368,533
Total Crash Occupants	37,894	8,823	639	272	207
<b>Hospital Charge/Occupant</b>	\$249.28	\$307.86	\$6,998.26	\$3,596.50	\$6,611.27

**Hospitalization Rates by Vehicle Type  
2003-2007**

	<b>Auto</b>	<b>Truck</b>	<b>Motorcycle</b>	<b>Bicycle</b>	<b>Pedestrian</b>
Hospital Cases	324	80	129	19	30
Total Crash Occupants	37,894	8,823	639	272	207
<b>Hospitalization Rate/Crash Occupant</b>	0.9%	0.9%	20.2%	7.0%	14.5%

**Emergency Room Charges by Vehicle Type  
2003-2007**

	<b>Auto</b>	<b>Truck</b>	<b>Motorcycle</b>	<b>Bicycle</b>	<b>Pedestrian</b>
ER Charges	\$3,574,256	\$739,792	\$449,198	\$145,215	\$89,835
Crash Occupants	37,894	8,823	639	272	207
<b>Emergency Room Charges/Crash Occupant</b>	\$94	\$84	\$703	\$534	\$434

**Emergency Room Visits by Vehicle Type  
2003-2007**

	<b>Auto</b>	<b>Truck</b>	<b>Motorcycle</b>	<b>Bicycle</b>	<b>Pedestrian</b>
Emergency Room Visits	3,837	635	269	127	105
Total Crash Occupants	37,894	8,823	639	272	207
<b>Emergency Room Rate/Crash Occupant</b>	10.1%	7.2%	42.1%	46.7%	50.7%

Indicates a value < 4

**Residents of Outagamie County  
Occupants of Motor Vehicle Crashes  
2003-2007**

	<b>Auto</b>	<b>Truck</b>	<b>Motorcycle</b>	<b>Bicycle</b>	<b>Pedestrian</b>	<b>Total</b>
2003	7,952	1,913	93	54	37	10,049
2004	7,869	1,909	113	48	34	9,973
2005	7,663	1,755	134	60	54	9,666
2006	7,163	1,679	131	47	53	9,073
2007	7,247	1,567	168	63	29	9,074
Five-Year Total	37,894	8,823	639	272	207	47,835

Indicates a value < 6

**Residents of Outagamie County  
Motor Vehicle Crash Hospitalizations, Hospital Charges and Emergency Room Visits and Charges  
2003-2007**

	<b>Auto</b>	<b>Truck</b>	<b>Motorcycle</b>	<b>Bicycle</b>	<b>Pedestrian</b>	<b>Total</b>
<b>2003</b>						
Number of Cases	68	13	15			103
Total Charges	\$1,443,457	\$203,877	\$442,773	\$113,846	\$61,050	\$2,265,003
<b>2004</b>						
Number of Cases	61	24	20			112
Total Charges	\$1,914,123	\$1,136,216	\$633,900	\$64,711	\$122,225	\$3,871,175
<b>2005</b>						
Number of Cases	57	11	22		9	105
Total Charges	\$2,122,086	\$427,844	\$461,186	\$83,324	\$309,348	\$3,403,788
<b>2006</b>						
Number of Cases	70	19	26		7	125
Total Charges	\$1,758,303	\$519,554	\$1,270,455	\$500,801	\$452,954	\$4,502,067
<b>2007</b>						
Number of Cases	68	13	46		7	137
Total Charges	\$2,208,246	\$428,800	\$1,663,575	\$215,565	\$422,956	\$4,939,142
<b>Five-YearTotal</b>						
Number of Cases	324	80	129	19	30	582
Total Charges	\$9,446,215	\$2,716,291	\$4,471,889	\$978,247	\$1,368,533	\$18,981,175

**Motor Vehicle Crash Emergency Room Visits and Charges  
2003-2007**

	<b>Auto</b>	<b>Truck</b>	<b>Motorcycle</b>	<b>Bicycle</b>	<b>Pedestrian</b>	<b>Total</b>
<b>2003</b>						
Number of Cases	779	136	39	28	16	998
Total Charges	\$458,415	\$111,769	\$38,246	\$27,256	\$15,060	\$650,746
<b>2004</b>						
Number of Cases	730	117	41	19	18	925
Total Charges	\$582,325	\$115,126	\$51,972	\$14,450	\$19,249	\$783,122
<b>2005</b>						
Number of Cases	810	121	64	26	29	1,050
Total Charges	\$806,817	\$145,280	\$138,940	\$37,439	\$33,575	\$1,162,051
<b>2006</b>						
Number of Cases	791	135	59	22	25	1,032
Total Charges	\$836,918	\$182,120	\$86,170	\$17,309	\$21,934	\$1,144,451
<b>2007</b>						
Number of Cases	727	126	66	32	17	968
Total Charges	\$889,781	\$185,497	\$133,870	\$48,761	\$17	\$1,257,926
<b>Five -Year Total</b>						
Number of Cases	3,837	635	269	127	105	4,005
Total Charges	\$3,574,256	\$739,792	\$449,198	\$145,215	\$89,835	\$3,740,370

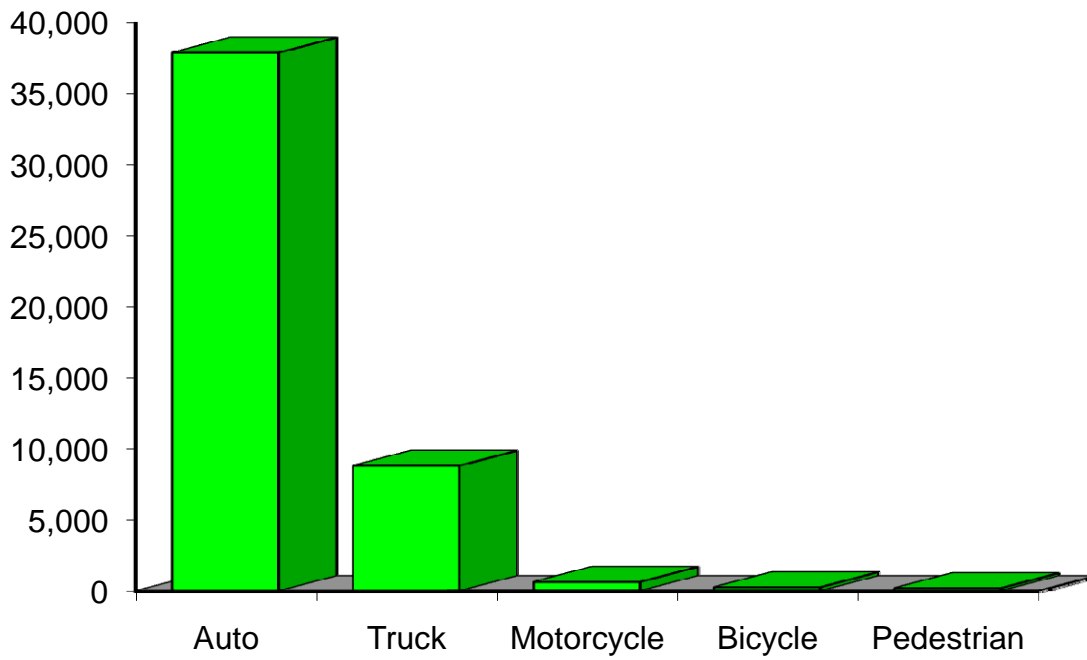
Indicates a value < 6

**Residents of Outagamie County  
Motor Vehicle Crash Deaths  
2003-2007**

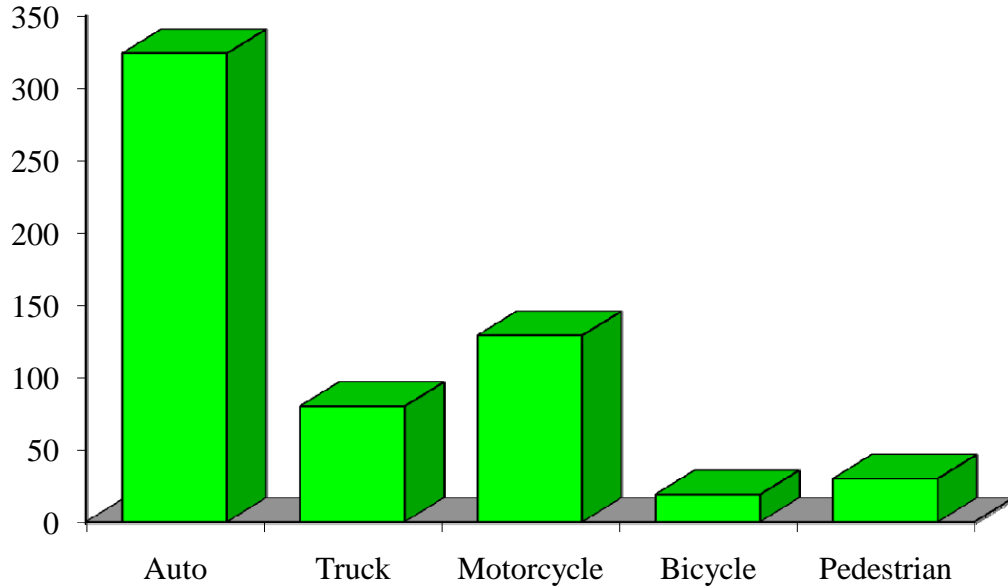
	<b>Auto</b>	<b>Truck</b>	<b>Motorcycle</b>	<b>Bicycle</b>	<b>Pedestrian</b>	<b>Total</b>
2003	13	7				28
2004	16				0	22
2005	17	12		0		33
2006	12			0		20
2007	18			0	0	23
Five-Year Total	76	30	11			126

Indicates a value < 6

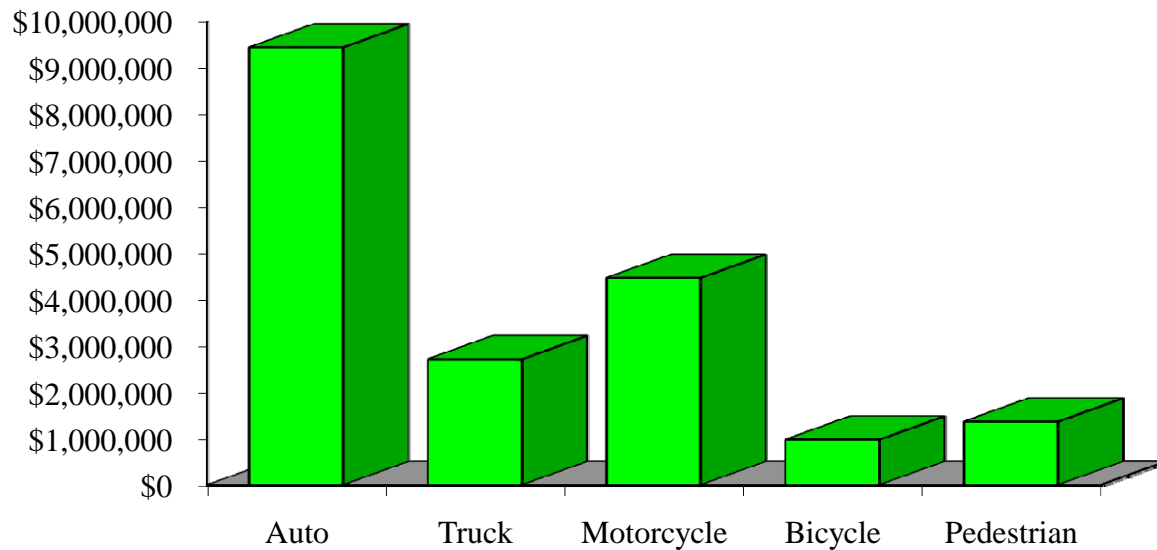
## Crash Occupants by Vehicle Type Residents of Outagamie County, 2003-2007



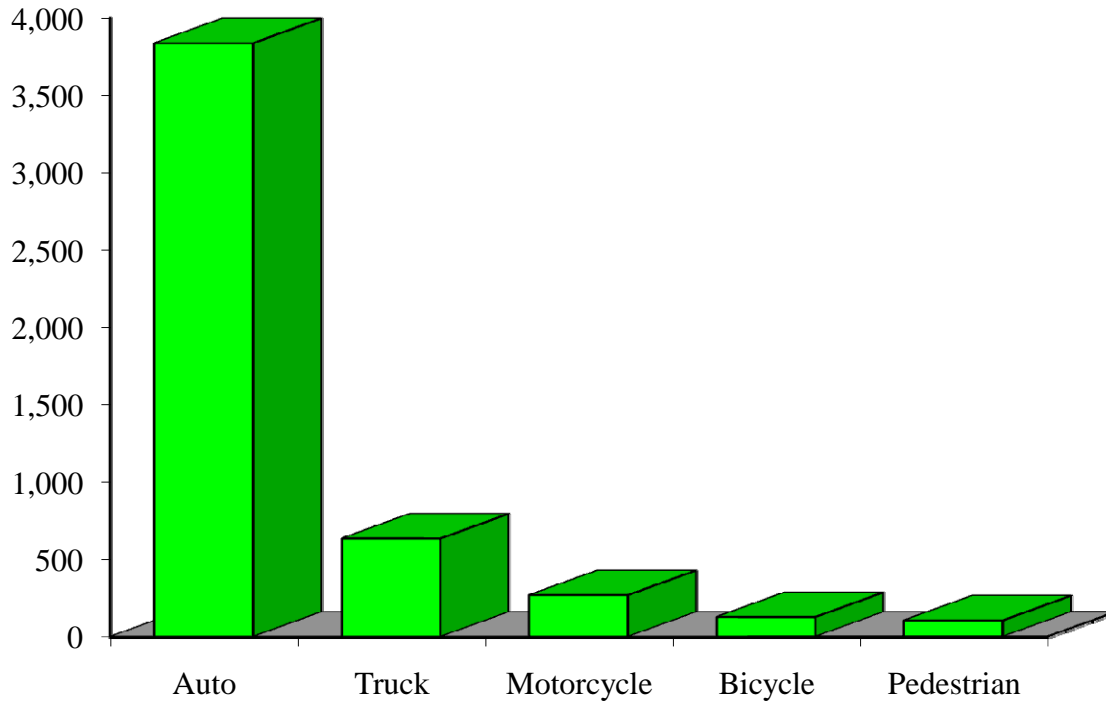
### Hospitalizations by Vehicle Type Residents of Outagamie County, 2003-2007



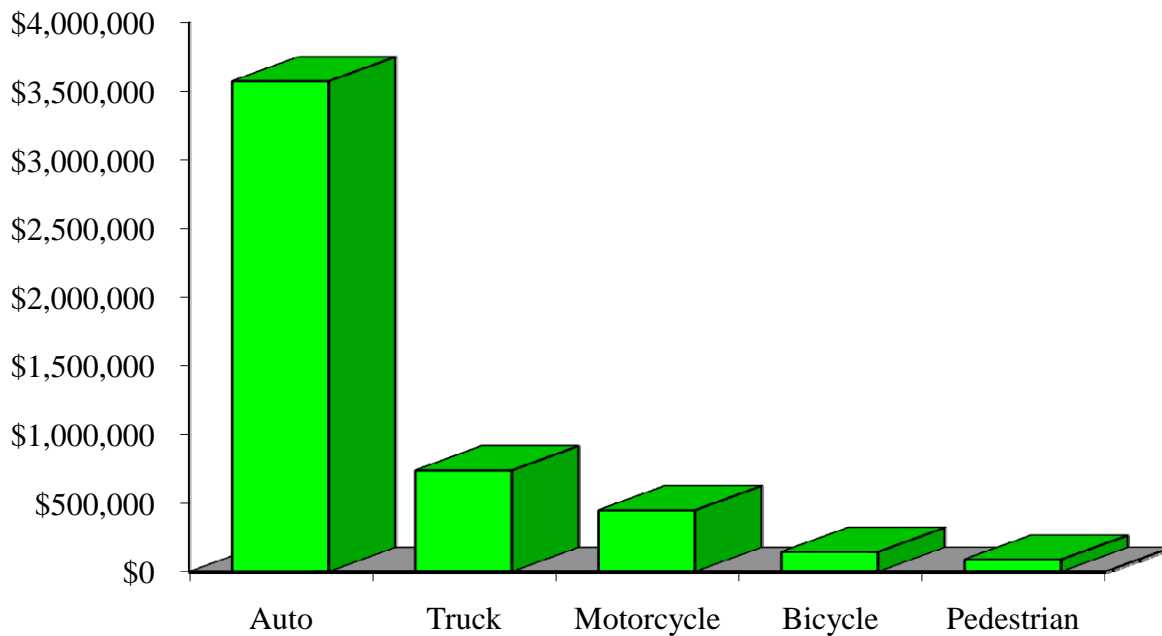
### Hospital Charges by Vehicle Type Residents of Outagamie County, 2003-2007



### Emergency Room Visits by Vehicle Type Residents of Outagamie County, 2003-2007



### Emergency Room Charges by Vehicle Type Residents of Outagamie County, 2003-2007



**Residents of Outagamie County and All Wisconsin 'Crash Occupants'**  
**Crash Involvement Rates and Costs**  
**2003-2007**

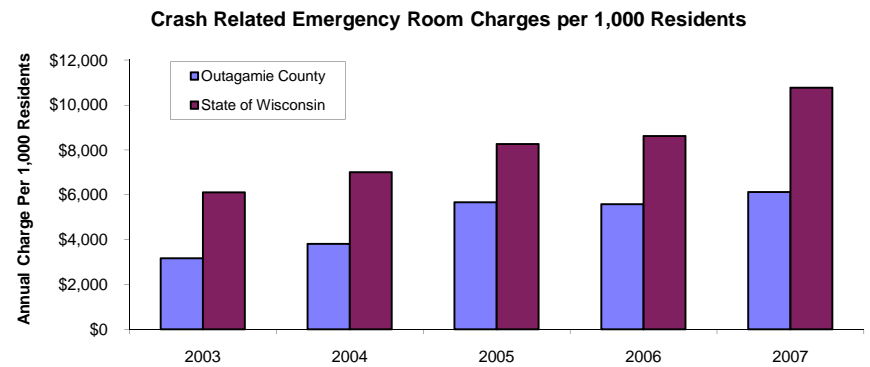
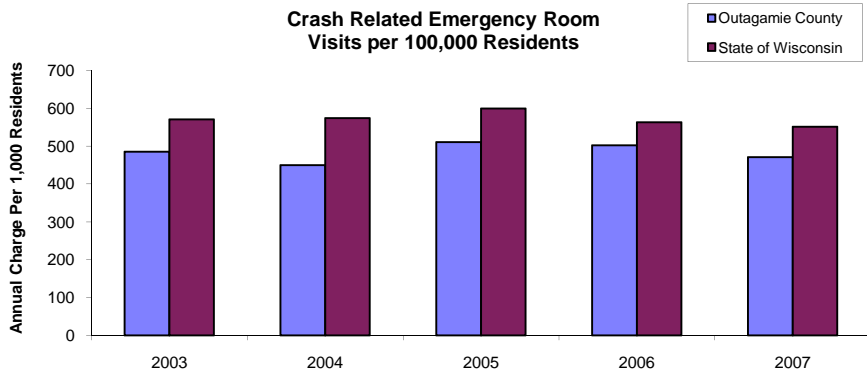
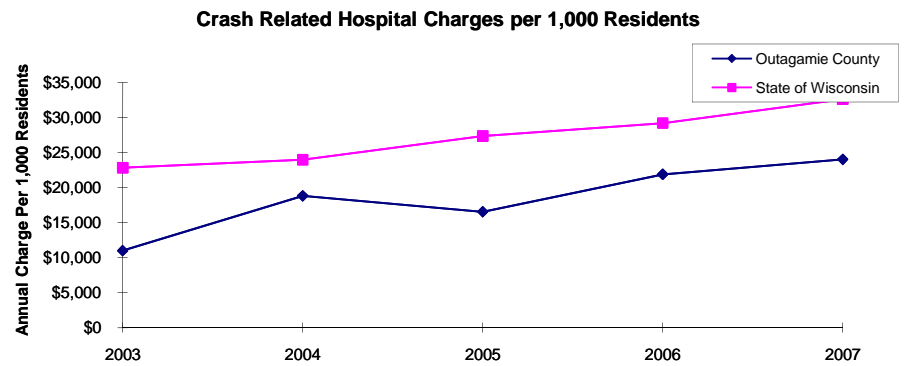
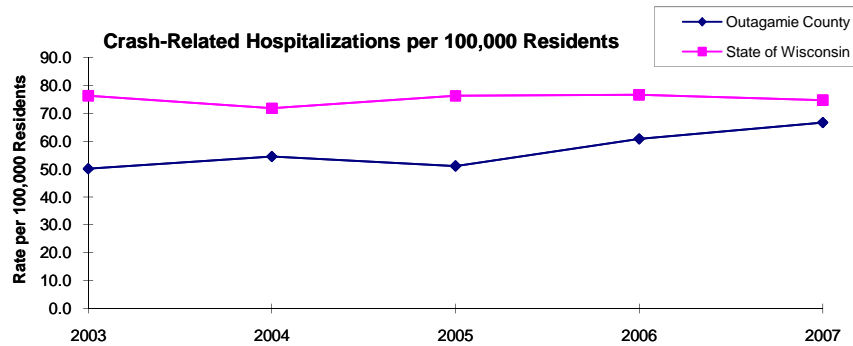
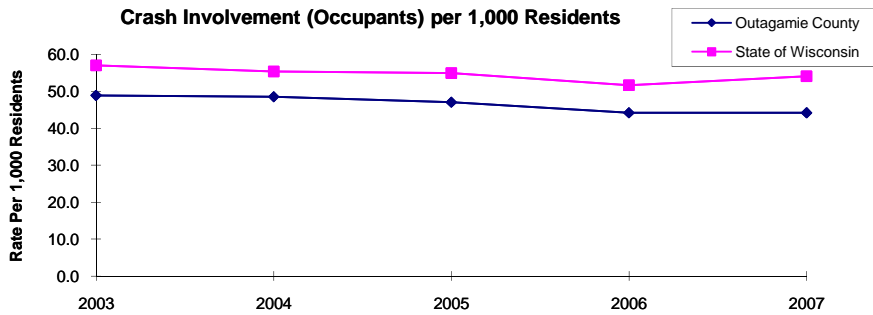
	<b>2003</b>	<b>2004</b>	<b>2005</b>	<b>2006</b>	<b>2007</b>	<b>Average</b>
<b>Annual Crash Involvement</b>						
<i>Outagamie County</i>						
Crash Occupants	10,049	9,973	9,666	9,073	9,074	9,567
<i>Rate per 1,000 Residents</i>	48.9	48.5	47.1	44.2	44.2	46.6
<i>State of Wisconsin</i>						
Crash Occupants	316,298	307,373	305,007	286,608	300,270	303,111
<i>Rate per 1,000 Residents</i>	57.0	55.4	55.0	51.6	54.1	54.6
<b>Annual Crash-Related Hospitalizations</b>						
<i>Outagamie County</i>						
Crash-Related Hospitalizations	103	112	105	125	137	116
<i>Rate per 100,000 Residents*</i>	50.1	54.5	51.1	60.8	66.7	56.7
<i>State of Wisconsin</i>						
Crash-Related Hospitalizations	4,234	3,983	4,232	4,253	4,146	4,170
<i>Rate per 100,000 Residents*</i>	76.3	71.8	76.3	76.6	74.7	75.1
<b>Annual Crash-Related Hospital Charges</b>						
<i>Outagamie County</i>						
Total Crash Injury Hospital Charges	\$2,265,003	\$3,871,175	\$3,403,788	\$4,502,067	\$4,939,142	\$3,796,235
<i>Annual Charge per 1,000 Residents</i>	\$11,026	\$18,844	\$16,569	\$21,915	\$24,043	\$18,479
<i>State of Wisconsin</i>						
Total Crash Injury Hospital Charges	\$126,881,405	\$133,270,653	\$151,898,242	\$162,208,759	\$181,072,379	\$151,066,288
<i>Annual Charge per 1,000 Residents</i>	\$22,861	\$24,012	\$27,368	\$29,226	\$32,625	\$27,219
<b>Annual Crash-Related Emergency Room Visits</b>						
<i>Outagamie County</i>						
Crash-Related Emergency Room Visits	998	925	1050	1,032	968	994
<i>Rate per 100,000 Residents*</i>	485.8	450.3	511.1	502.4	471.2	483.7
<i>State of Wisconsin</i>						
Crash-Related Emergency Room Visits	31,664	31,866	33,269	31,268	30,615	\$31,755
<i>Rate per 100,000 Residents*</i>	570.5	574.1	599.4	563.4	551.6	572.1
<b>Annual Crash-Related Emergency Room Charges</b>						
<i>Outagamie County</i>						
Total Crash Injury Emergency Room Charges	\$650,746	\$783,122	\$1,162,051	\$1,144,451	\$1,257,926	\$1,086,888
<i>Annual ER Charge per 1,000 Residents</i>	\$3,168	\$3,812	\$5,657	\$5,571	\$6,123	\$5,291
<i>State of Wisconsin</i>						
Crash Injury Emergency Room Charges	\$33,900,299	\$38,900,194	\$45,882,386	\$47,860,521	\$59,808,628	\$48,112,932
<i>Annual ER Charge per 1,000 Residents</i>	6,108	\$7,009	\$8,267	\$8,623	\$10,776	\$8,669

**Average Annual Population (computed 2003-2007 population estimates)**

<i>Outagamie County</i>	205,430	* Reported as a rate per 100,000 residents to better highlight
<i>State of Wisconsin</i>	5,550,118	variations: 1.12 per 1,000 = 112 per 100,000.

Population data estimates are available at the Demographic Services Center, Wisconsin Department of Administration

## Residents of Outagamie County



Zipcodes included in County of Resident Reports

**Residents of Outagamie County**

54106	54113
54130	54131
54136	54140
54152	54155
54165	54170
54911-54919	54922
54931	54942
54944	54951
54961	