
Residents of Washington County

Motor Vehicle Crash Occupants, Hospitalizations, Emergency Room Visits and Fatalities 2003-2007

	Auto	Truck	Motorcycle	Bicycle	Pedestrian	Total
Crash Occupants	26,308	6,118	474	119	126	33,145
Hospitalized Cases	265	50	101		20	442
Hospital Charges	\$11,028,972	\$1,778,738	\$4,202,449	\$234,821	\$701,499	\$17,946,479
Emergency Room Visits	2,322	376	200	61	59	2,369
Emergency Room Charges	\$3,246,607	\$639,421	\$503,548	\$93,328	\$88,998	\$3,264,079
Deaths	45	7	15	1	4	72

Indicates a value < 6

**Residents of Washington County
Hospitalization Charges by Vehicle Type
2003-2007**

	Auto	Truck	Motorcycle	Bicycle	Pedestrian
Hospital Charges	\$11,028,972	\$1,778,738	\$4,202,449	\$234,821	\$701,499
Total Crash Occupants	26,308	6,118	474	119	126
Hospital Charge/Occupant	\$419.23	\$290.74	\$8,865.93	\$1,973.29	\$5,567.45

**Hospitalization Rates by Vehicle Type
2003-2007**

	Auto	Truck	Motorcycle	Bicycle	Pedestrian
Hospital Cases	265	50	101	6	20
Total Crash Occupants	26,308	6,118	474	119	126
Hospitalization Rate/Crash Occupant	1.0%	0.8%	21.3%	5.0%	15.9%

**Emergency Room Charges by Vehicle Type
2003-2007**

	Auto	Truck	Motorcycle	Bicycle	Pedestrian
ER Charges	\$3,246,607	\$639,421	\$503,548	\$93,328	\$88,998
Crash Occupants	26,308	6,118	474	119	126
Emergency Room Charges/Crash Occupant	\$123	\$105	\$1,062	\$784	\$706

**Emergency Room Visits by Vehicle Type
2003-2007**

	Auto	Truck	Motorcycle	Bicycle	Pedestrian
Emergency Room Visits	2,322	376	200	61	59
Total Crash Occupants	26,308	6,118	474	119	126
Emergency Room Rate/Crash Occupant	8.8%	6.1%	42.2%	51.3%	46.8%

Indicates a value < 4

**Residents of Washington County
Occupants of Motor Vehicle Crashes
2003-2007**

	Auto	Truck	Motorcycle	Bicycle	Pedestrian	Total
2003	5,383	1,245	111	30	26	6,795
2004	5,036	1,317	85	33	20	6,491
2005	5,388	1,282	102	15	29	6,816
2006	4,954	1,111	86	24	24	6,199
2007	5,547	1,163	90	17	27	6,844
Five-Year Total	26,308	6,118	474	119	126	33,145

Indicates a value < 6

**Residents of Washington County
Motor Vehicle Crash Hospitalizations, Hospital Charges and Emergency Room Visits and Charges
2003-2007**

	Auto	Truck	Motorcycle	Bicycle	Pedestrian	Total
2003						
Number of Cases	41	10	21			79
Total Charges	\$1,419,896	\$457,408	\$715,863	\$111,619	\$327,314	\$3,032,100
2004						
Number of Cases	55	16	20			95
Total Charges	\$2,213,004	\$378,701	\$475,485	\$40,648	\$41,084	\$3,148,922
2005						
Number of Cases	60	7	21	0	0	88
Total Charges	\$2,119,366	\$297,275	\$649,167	\$0	\$0	\$3,065,808
2006						
Number of Cases	67	8	19			103
Total Charges	\$3,048,960	\$443,496	\$918,966	\$82,554	\$240,464	\$4,734,440
2007						
Number of Cases	42	9	20	0		77
Total Charges	\$2,227,746	\$201,858	\$1,442,968	\$0	\$92,637	\$3,965,209
Five-YearTotal						
Number of Cases	265	50	101		20	442
Total Charges	\$11,028,972	\$1,778,738	\$4,202,449	\$234,821	\$701,499	\$17,946,479

**Motor Vehicle Crash Emergency Room Visits and Charges
2003-2007**

	Auto	Truck	Motorcycle	Bicycle	Pedestrian	Total
2003						
Number of Cases	384	52	46	18	9	509
Total Charges	\$358,601	\$72,871	\$105,864	\$16,768	\$9,209	\$563,313
2004						
Number of Cases	452	87	32	15	10	596
Total Charges	\$515,770	\$140,036	\$70,870	\$14,606	\$27,269	\$768,551
2005						
Number of Cases	533	94	47		16	696
Total Charges	\$693,208	\$132,102	\$116,296	\$17,526	\$22,522	\$981,654
2006						
Number of Cases	439	69	35	14	11	568
Total Charges	\$679,228	\$151,495	\$65,805	\$24,048	\$29,985	\$950,561
2007						
Number of Cases	514	74	40	8	13	649
Total Charges	\$999,800	\$142,917	\$144,713	\$20,380	\$13	\$1,307,823
Five -Year Total						
Number of Cases	2,322	376	200	61	59	2,369
Total Charges	\$3,246,607	\$639,421	\$503,548	\$93,328	\$88,998	\$3,264,079

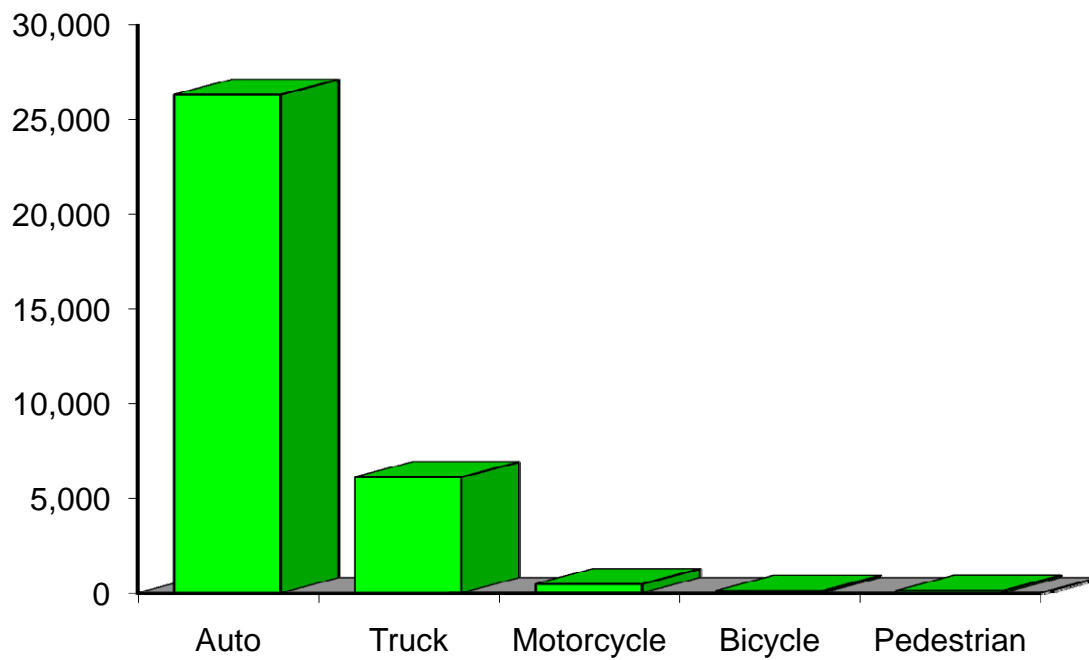
Indicates a value < 6

**Residents of Washington County
Motor Vehicle Crash Deaths
2003-2007**

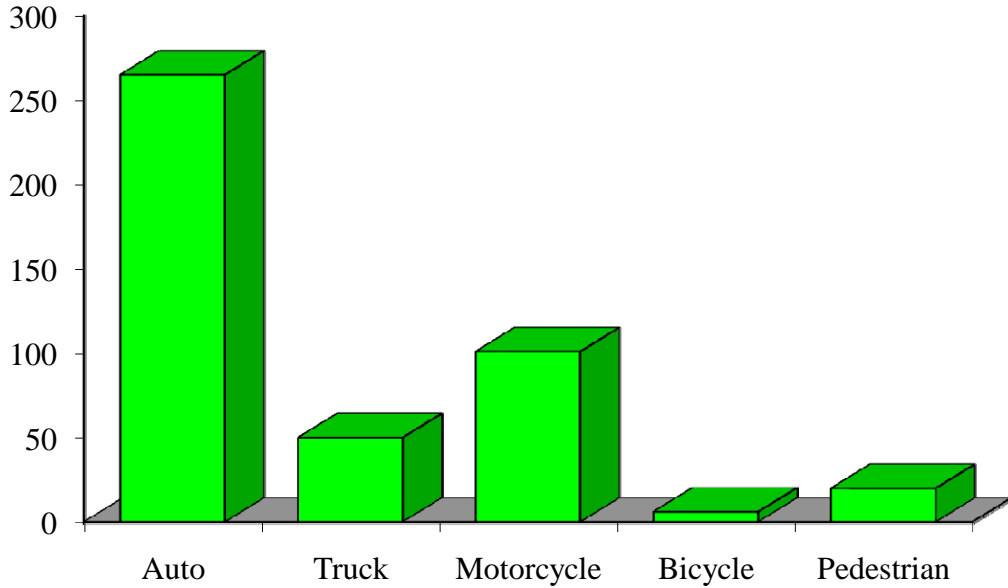
	Auto	Truck	Motorcycle	Bicycle	Pedestrian	Total
2003	8			0		17
2004	10	0	0	0		12
2005	15		0	0	0	17
2006	7			0	0	14
2007					0	12
Five-Year Total	45	7	15			72

Indicates a value < 6

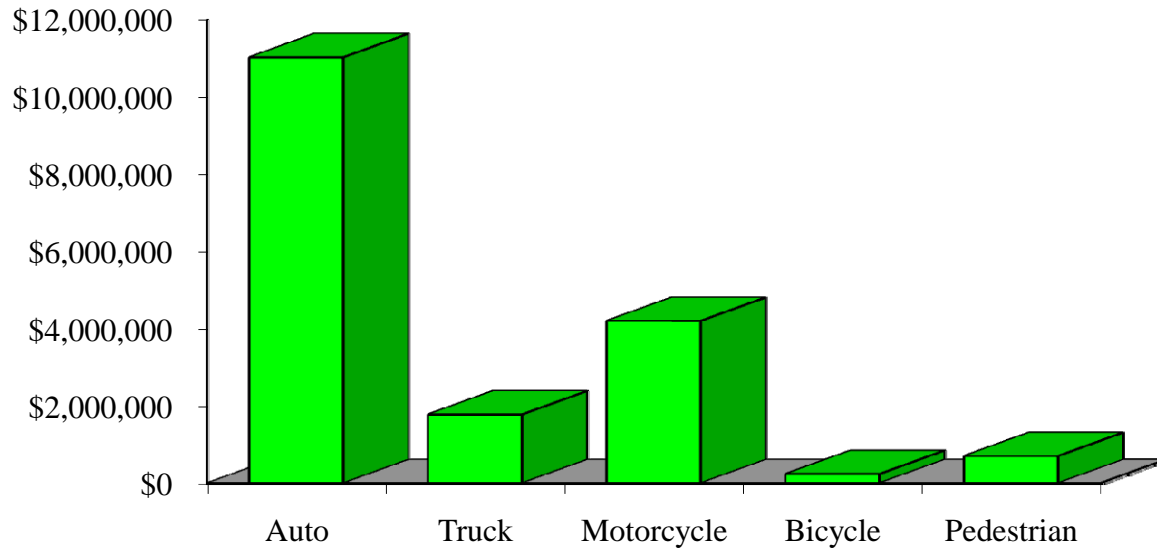
Crash Occupants by Vehicle Type Residents of Washington County, 2003-2007



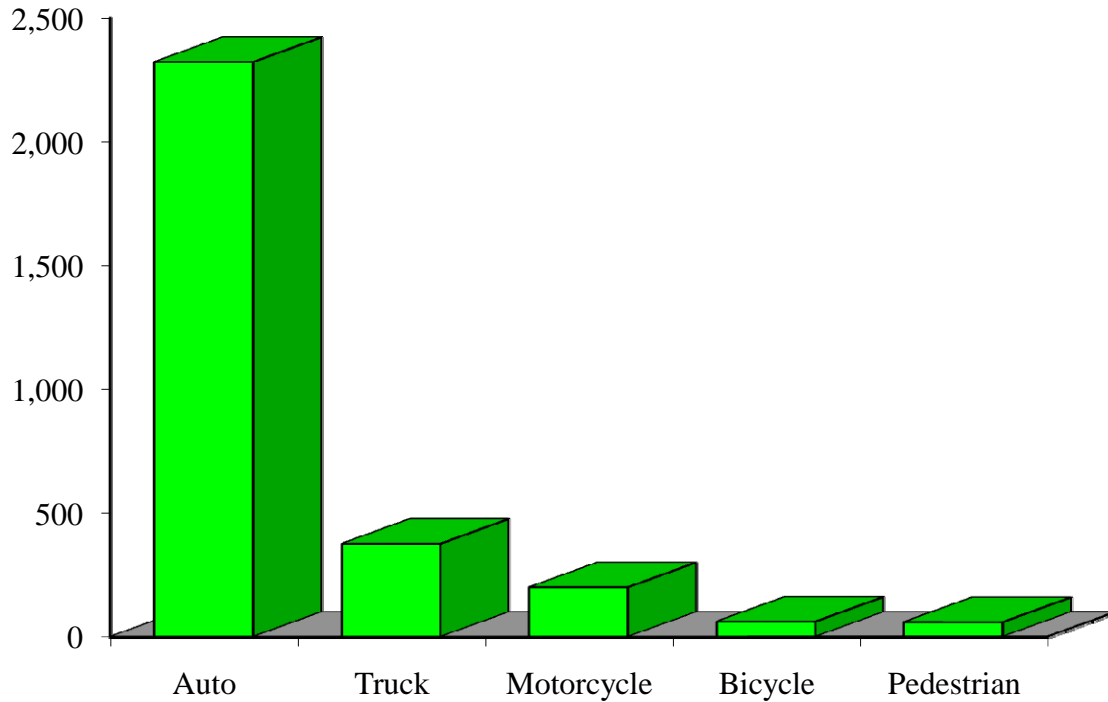
Hospitalizations by Vehicle Type Residents of Washington County, 2003-2007



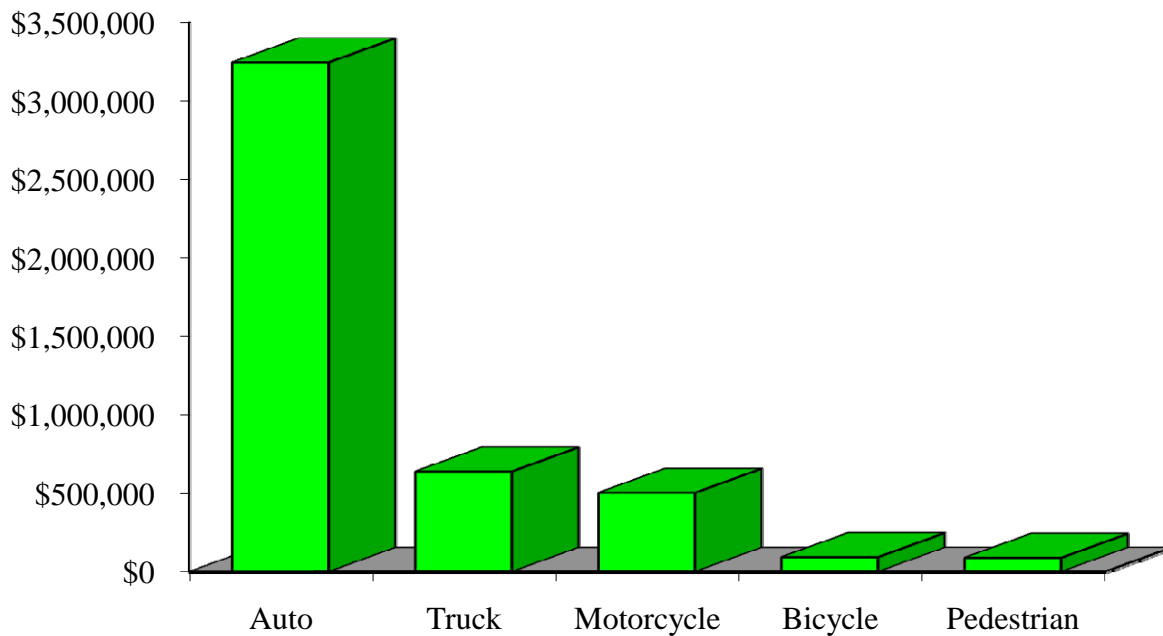
Hospital Charges by Vehicle Type Residents of Washington County, 2003-2007



Emergency Room Visits by Vehicle Type Residents of Washington County, 2003-2007



Emergency Room Charges by Vehicle Type Residents of Washington County, 2003-2007



Residents of Washington County and All Wisconsin 'Crash Occupants'
Crash Involvement Rates and Costs
2003-2007

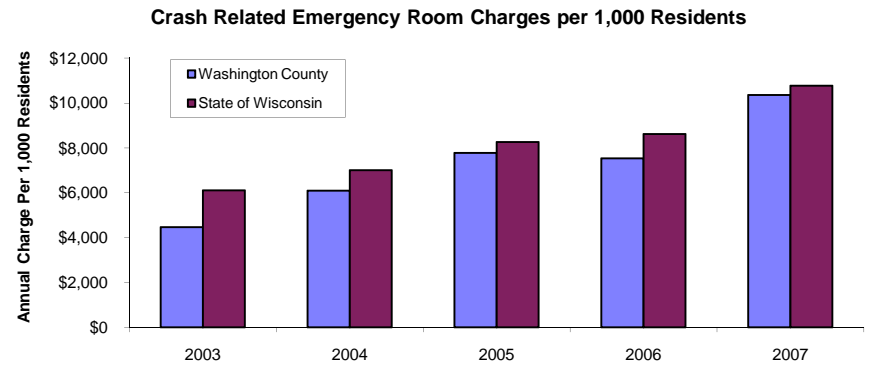
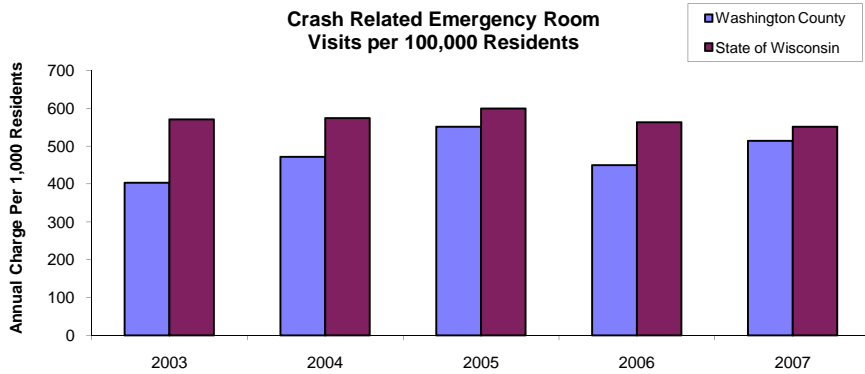
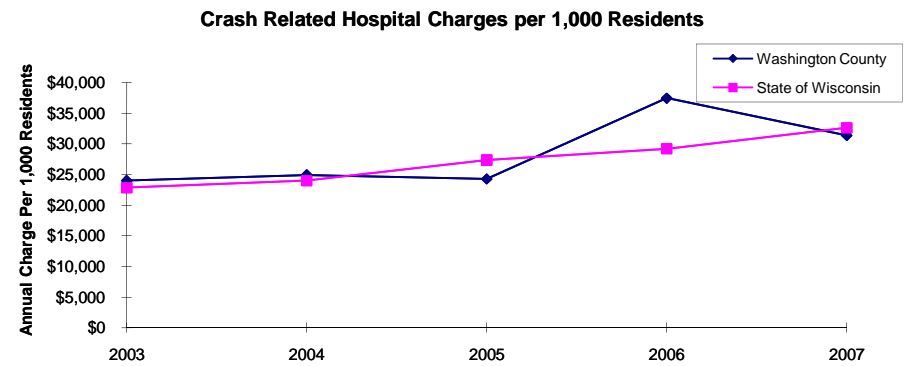
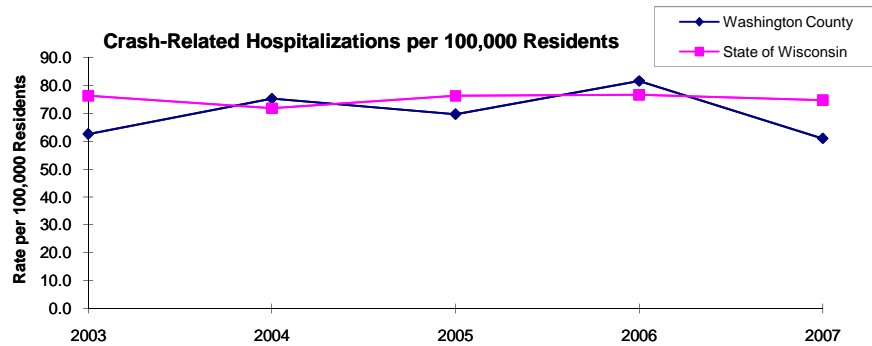
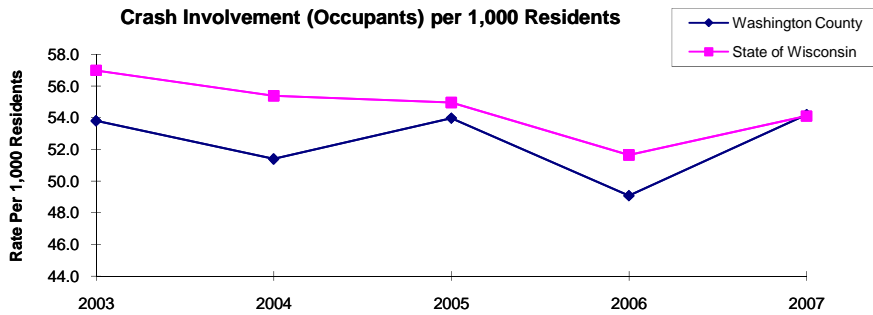
	2003	2004	2005	2006	2007	Average
Annual Crash Involvement						
<i>Washington County</i>						
Crash Occupants	6,795	6,491	6,816	6,199	6,844	6,629
<i>Rate per 1,000 Residents</i>	53.8	51.4	54.0	49.1	54.2	52.5
<i>State of Wisconsin</i>						
Crash Occupants	316,298	307,373	305,007	286,608	300,270	303,111
<i>Rate per 1,000 Residents</i>	57.0	55.4	55.0	51.6	54.1	54.6
Annual Crash-Related Hospitalizations						
<i>Washington County</i>						
Crash-Related Hospitalizations	79	95	88	103	77	88
<i>Rate per 100,000 Residents*</i>	62.6	75.2	69.7	81.6	61.0	70.0
<i>State of Wisconsin</i>						
Crash-Related Hospitalizations	4,234	3,983	4,232	4,253	4,146	4,170
<i>Rate per 100,000 Residents*</i>	76.3	71.8	76.3	76.6	74.7	75.1
Annual Crash-Related Hospital Charges						
<i>Washington County</i>						
Total Crash Injury Hospital Charges	\$3,032,100	\$3,148,922	\$3,065,808	\$4,734,440	\$3,965,209	\$3,589,296
<i>Annual Charge per 1,000 Residents</i>	\$24,008	\$24,933	\$24,275	\$37,487	\$31,396	\$28,420
<i>State of Wisconsin</i>						
Total Crash Injury Hospital Charges	\$126,881,405	\$133,270,653	\$151,898,242	\$162,208,759	\$181,072,379	\$151,066,288
<i>Annual Charge per 1,000 Residents</i>	\$22,861	\$24,012	\$27,368	\$29,226	\$32,625	\$27,219
Annual Crash-Related Emergency Room Visits						
<i>Washington County</i>						
Crash-Related Emergency Room Visits	509	596	696	568	649	627
<i>Rate per 100,000 Residents*</i>	403.0	471.9	551.1	449.7	513.9	496.7
<i>State of Wisconsin</i>						
Crash-Related Emergency Room Visits	31,664	31,866	33,269	31,268	30,615	\$31,755
<i>Rate per 100,000 Residents*</i>	570.5	574.1	599.4	563.4	551.6	572.1
Annual Crash-Related Emergency Room Charges						
<i>Washington County</i>						
Total Crash Injury Emergency Room Charges	\$563,313	\$768,551	\$981,654	\$950,561	\$1,307,823	\$1,002,147
<i>Annual ER Charge per 1,000 Residents</i>	\$4,460	\$6,085	\$7,773	\$7,526	\$10,355	\$7,935
<i>State of Wisconsin</i>						
Crash Injury Emergency Room Charges	\$33,900,299	\$38,900,194	\$45,882,386	\$47,860,521	\$59,808,628	\$48,112,932
<i>Annual ER Charge per 1,000 Residents</i>	6,108	\$7,009	\$8,267	\$8,623	\$10,776	\$8,669

Average Annual Population (computed 2003-2007 population estimates)

<i>Washington County</i>	126,296	* Reported as a rate per 100,000 residents to better highlight
<i>State of Wisconsin</i>	5,550,118	variations: 1.12 per 1,000 = 112 per 100,000.

Population data estimates are available at the Demographic Services Center, Wisconsin Department of Administration

Residents of Washington County



Zipcodes included in County of Resident Reports

Residents of Washington County

53002	53017
53022	53027
53033	53037
53040	53060
53076	53077
53086	53095
53096	