

---

## Residents of Ashland County

### Motor Vehicle Crash Occupants, Hospitalizations, Emergency Room Visits and Fatalities 2003-2007

	<b>Auto</b>	<b>Truck</b>	<b>Motorcycle</b>	<b>Bicycle</b>	<b>Pedestrian</b>	<b>Total</b>
Crash Occupants	2,344	876	22	15	21	3,278
Hospitalized Cases	26	11				45
Hospital Charges	\$293,931	\$138,070	\$39,977	\$5,518	\$63,543	\$541,039
Emergency Room Visits	206	53		9	10	234
Emergency Room Charges	\$288,332	\$43,787	\$5,762	\$10,660	\$13,357	\$300,124
Deaths	8	1	2	0	1	12

Indicates a value < 6

**Residents of Ashland County  
Hospitalization Charges by Vehicle Type  
2003-2007**

	<b>Auto</b>	<b>Truck</b>	<b>Motorcycle</b>	<b>Bicycle</b>	<b>Pedestrian</b>
Hospital Charges	\$293,931	\$138,070	\$39,977	\$5,518	\$63,543
Total Crash Occupants	2,344	876	22	15	21
<b>Hospital Charge/Occupant</b>	\$125.40	\$157.61	\$1,817.14	\$367.87	\$3,025.86

**Hospitalization Rates by Vehicle Type  
2003-2007**

	<b>Auto</b>	<b>Truck</b>	<b>Motorcycle</b>	<b>Bicycle</b>	<b>Pedestrian</b>
Hospital Cases	26	11			5
Total Crash Occupants	2,344	876	22	15	21
<b>Hospitalization Rate/Crash Occupant</b>	1.1%	1.3%	9.1%	6.7%	23.8%

**Emergency Room Charges by Vehicle Type  
2003-2007**

	<b>Auto</b>	<b>Truck</b>	<b>Motorcycle</b>	<b>Bicycle</b>	<b>Pedestrian</b>
ER Charges	\$288,332	\$43,787	\$5,762	\$10,660	\$13,357
Crash Occupants	2,344	876	22	15	21
<b>Emergency Room Charges/Crash Occupant</b>	\$123	\$50	\$262	\$711	\$636

**Emergency Room Visits by Vehicle Type  
2003-2007**

	<b>Auto</b>	<b>Truck</b>	<b>Motorcycle</b>	<b>Bicycle</b>	<b>Pedestrian</b>
Emergency Room Visits	206	53	6	9	10
Total Crash Occupants	2,344	876	22	15	21
<b>Emergency Room Rate/Crash Occupant</b>	8.8%	6.1%	27.3%	60.0%	47.6%

Indicates a value < 4

**Residents of Ashland County  
Occupants of Motor Vehicle Crashes  
2003-2007**

	<b>Auto</b>	<b>Truck</b>	<b>Motorcycle</b>	<b>Bicycle</b>	<b>Pedestrian</b>	<b>Total</b>
2003	442	165				616
2004	521	207			8	740
2005	448	178	8			639
2006	468	149				628
2007	465	177				655
Five-Year Total	2,344	876	22	15	21	3,278

Indicates a value < 6

**Residents of Ashland County**  
**Motor Vehicle Crash Hospitalizations, Hospital Charges and Emergency Room Visits and Charges**  
**2003-2007**

	<b>Auto</b>	<b>Truck</b>	<b>Motorcycle</b>	<b>Bicycle</b>	<b>Pedestrian</b>	<b>Total</b>
<b>2003</b>						
Number of Cases	8	0		0	0	9
Total Charges	\$93,365	\$0	\$24,518	\$0	\$0	\$117,883
<b>2004</b>						
Number of Cases				0		14
Total Charges	\$59,561	\$40,432	\$15,459	\$0	\$63,543	\$178,995
<b>2005</b>						
Number of Cases			0		0	9
Total Charges	\$38,409	\$27,695	\$0	\$5,518	\$0	\$71,622
<b>2006</b>						
Number of Cases			0	0	0	8
Total Charges	\$71,503	\$31,342	\$0	\$0	\$0	\$102,845
<b>2007</b>						
Number of Cases			0	0	0	
Total Charges	\$31,093	\$38,601	\$0	\$0	\$0	\$69,694
<b>Five-YearTotal</b>						
Number of Cases	26	11				45
Total Charges	\$293,931	\$138,070	\$39,977	\$5,518	\$63,543	\$541,039

**Motor Vehicle Crash Emergency Room Visits and Charges**  
**2003-2007**

	<b>Auto</b>	<b>Truck</b>	<b>Motorcycle</b>	<b>Bicycle</b>	<b>Pedestrian</b>	<b>Total</b>
<b>2003</b>						
Number of Cases	41	9				55
Total Charges	\$30,732	\$4,437	\$730	\$6,421	\$1,754	\$44,074
<b>2004</b>						
Number of Cases	44	20	0	0		67
Total Charges	\$59,461	\$14,471	\$0	\$0	\$9,687	\$83,619
<b>2005</b>						
Number of Cases	36	9				49
Total Charges	\$51,005	\$11,169	\$904	\$1,269	\$156	\$64,503
<b>2006</b>						
Number of Cases	49	7				63
Total Charges	\$95,159	\$7,693	\$761	\$2,557	\$1,758	\$107,928
<b>2007</b>						
Number of Cases	36	8				50
Total Charges	\$51,975	\$6,017	\$3,367	\$413		\$61,774
<b>Five -Year Total</b>						
Number of Cases	206	53		9	10	234
Total Charges	\$288,332	\$43,787	\$5,762	\$10,660	\$13,357	\$300,124

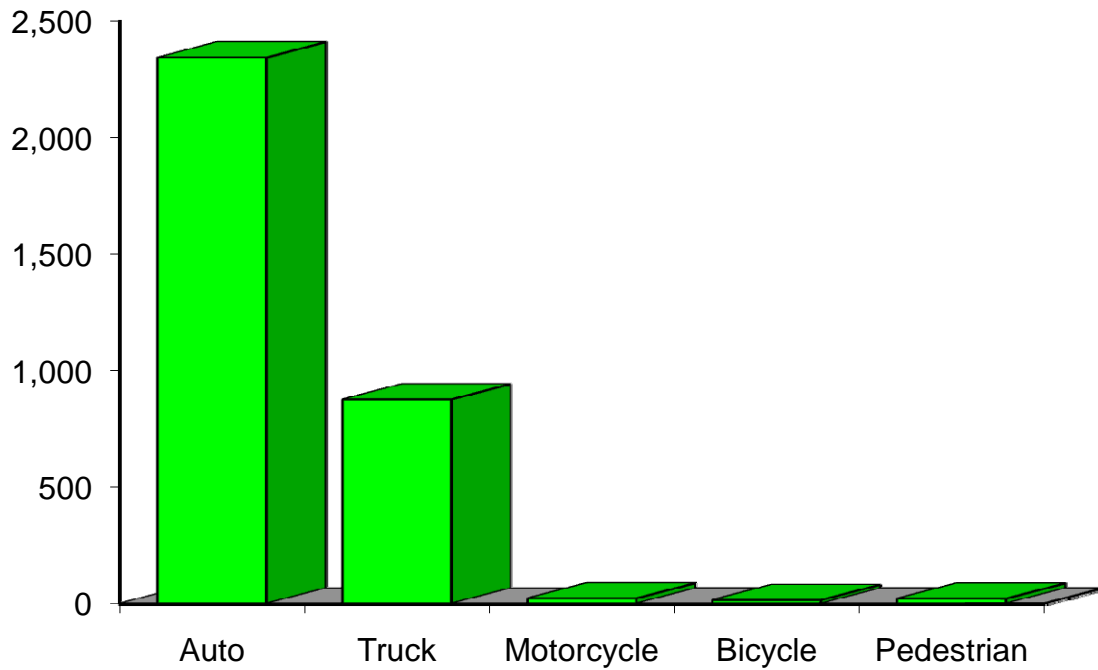
Indicates a value < 6

**Residents of Ashland County  
Motor Vehicle Crash Deaths  
2003-2007**

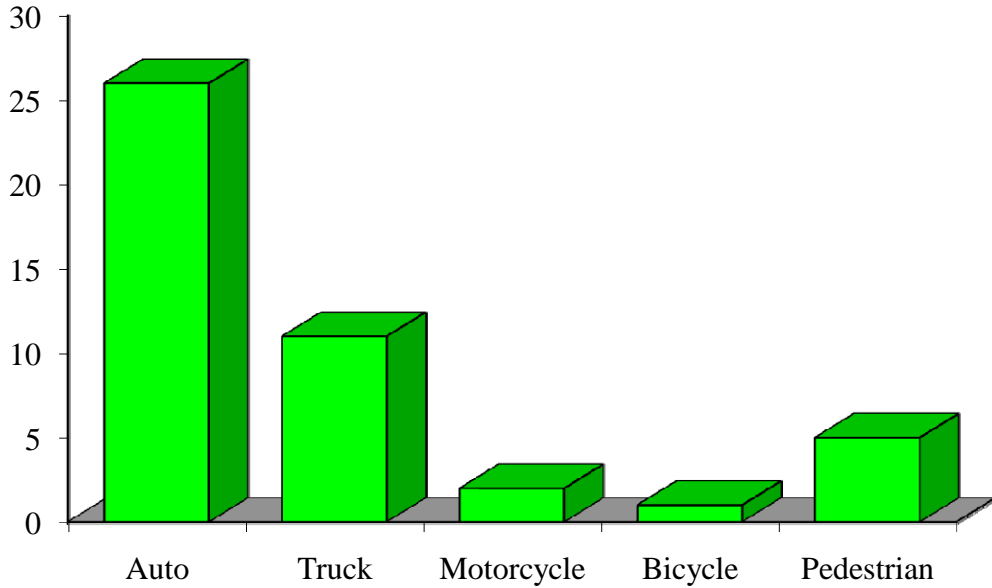
	<b>Auto</b>	<b>Truck</b>	<b>Motorcycle</b>	<b>Bicycle</b>	<b>Pedestrian</b>	<b>Total</b>
2003		0	0	0		
2004		0	0	0	0	
2005		0		0	0	
2006		0	0	0	0	
2007	0			0	0	
Five-Year Total	8			0		12

Indicates a value < 6

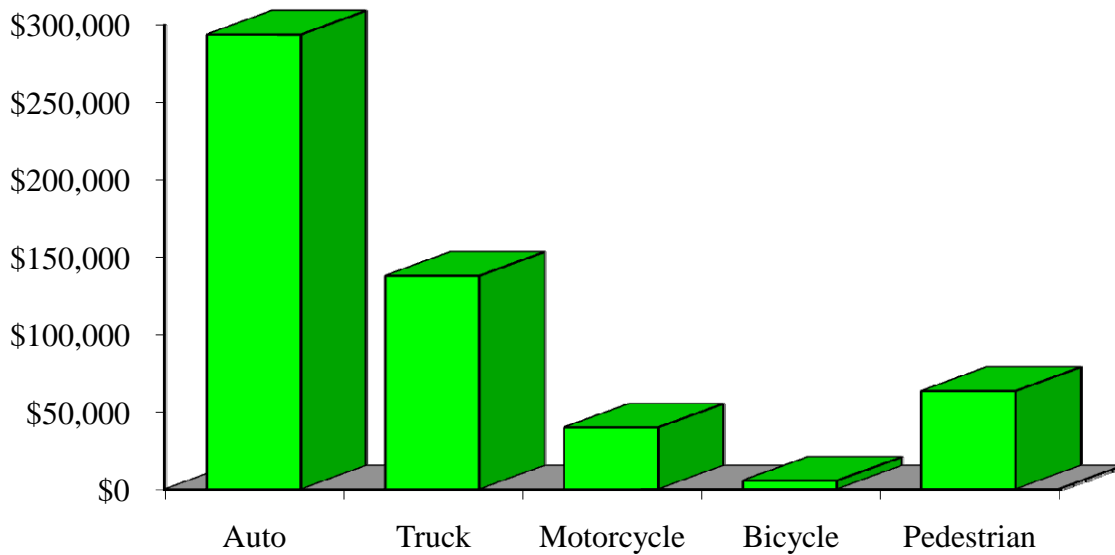
## Crash Occupants by Vehicle Type Residents of Ashland County, 2003-2007



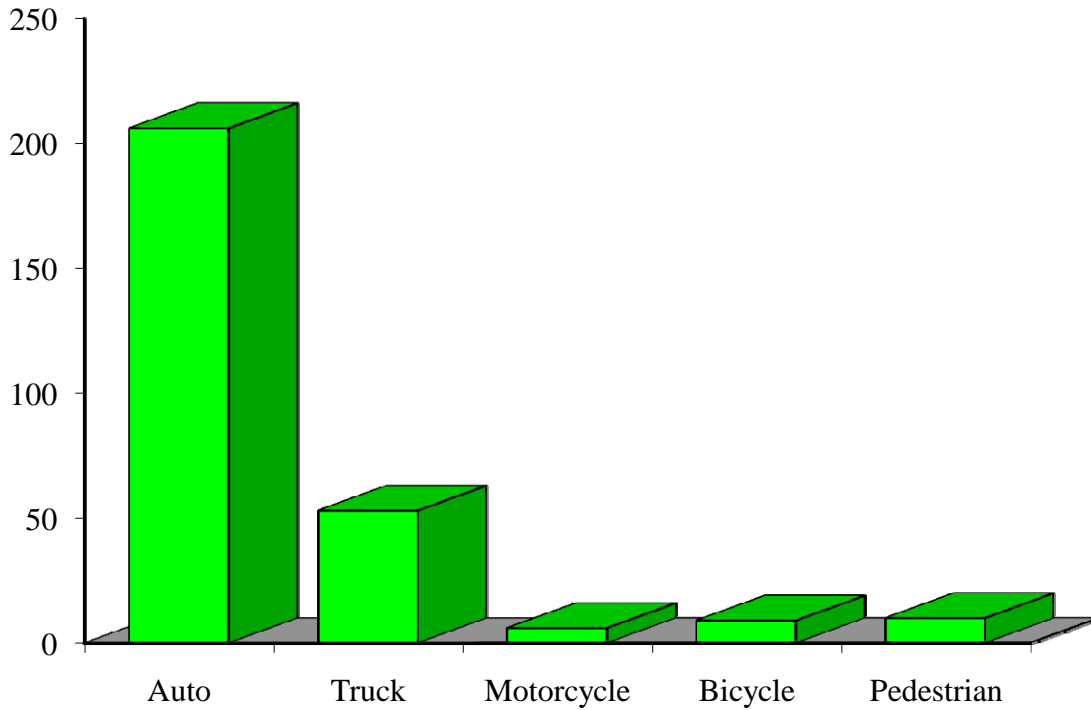
### Hospitalizations by Vehicle Type Residents of Ashland County, 2003-2007



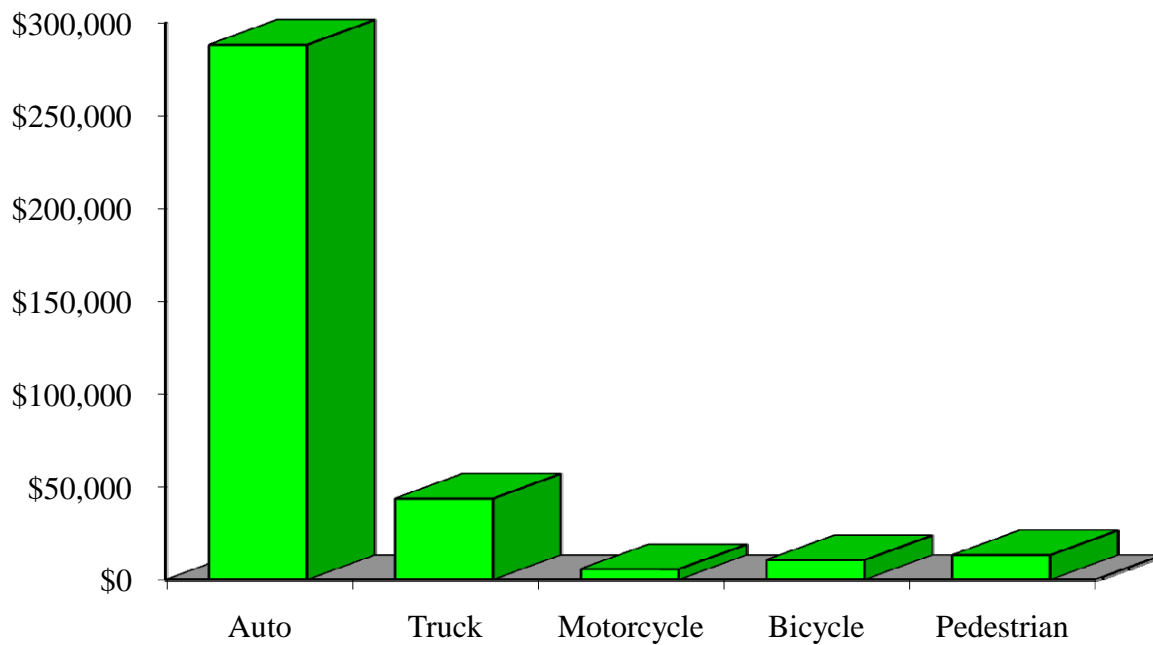
### Hospital Charges by Vehicle Type Residents of Ashland County, 2003-2007



### Emergency Room Visits by Vehicle Type Residents of Ashland County, 2003-2007



### Emergency Room Charges by Vehicle Type Residents of Ashland County, 2003-2007



**Residents of Ashland County and All Wisconsin 'Crash Occupants'**

**Crash Involvement Rates and Costs**

2003-2007

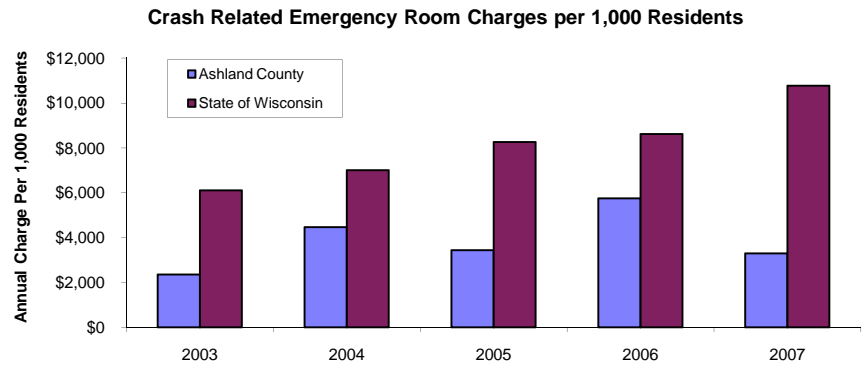
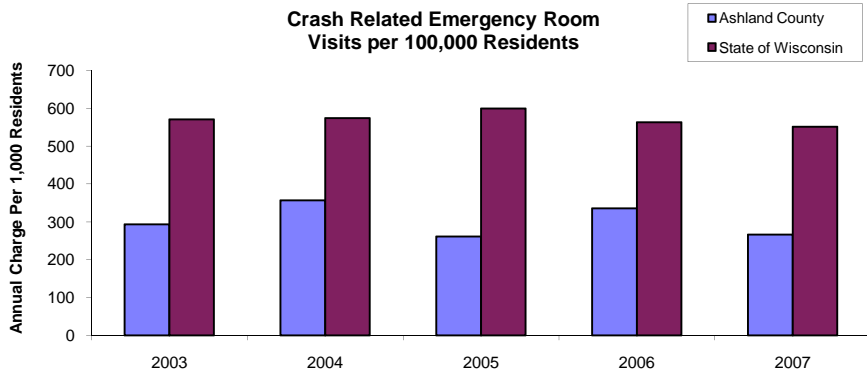
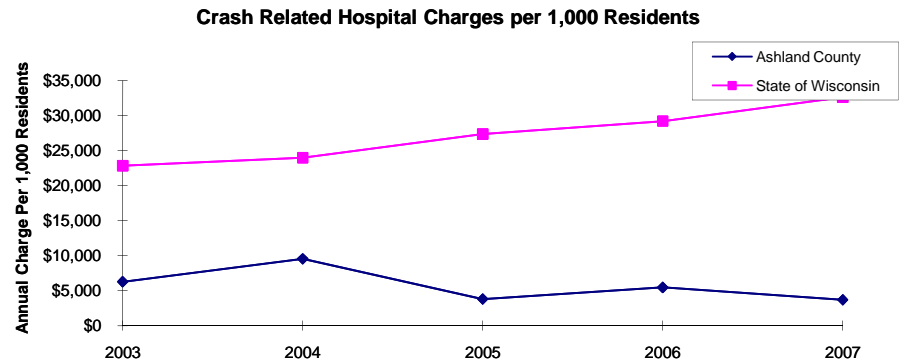
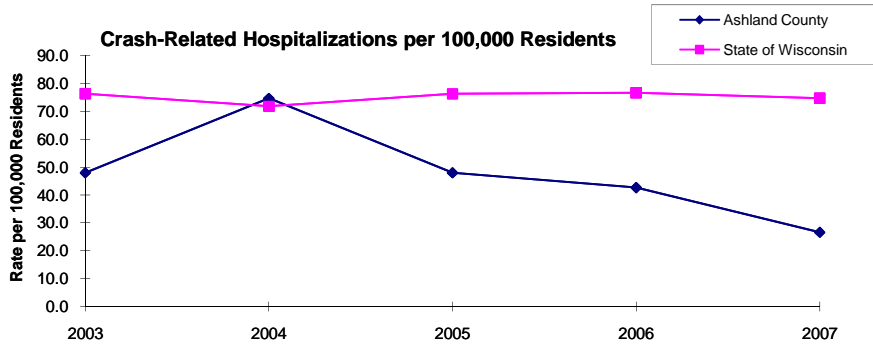
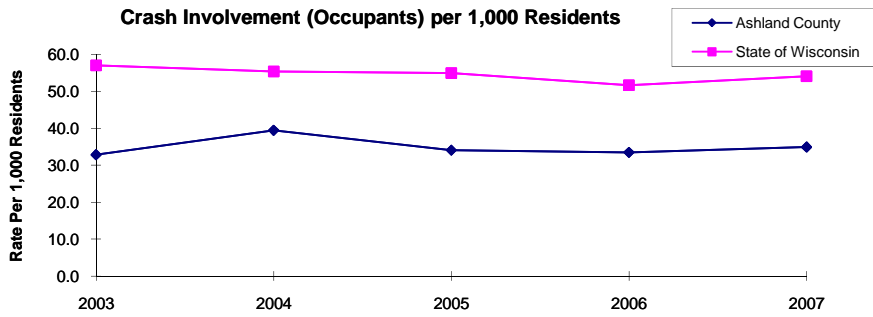
	2003	2004	2005	2006	2007	Average
<b>Annual Crash Involvement</b>						
Ashland County						
Crash Occupants	616	740	639	628	655	656
<i>Rate per 1,000 Residents</i>	32.8	39.5	34.1	33.5	34.9	35.0
State of Wisconsin						
Crash Occupants	316,298	307,373	305,007	286,608	300,270	303,111
<i>Rate per 1,000 Residents</i>	57.0	55.4	55.0	51.6	54.1	54.6
<b>Annual Crash-Related Hospitalizations</b>						
Ashland County						
Crash-Related Hospitalizations	9	14	9	8		9
<i>Rate per 100,000 Residents*</i>	48.0	74.6	48.0	42.7	26.7	48.0
State of Wisconsin						
Crash-Related Hospitalizations	4,234	3,983	4,232	4,253	4,146	4,170
<i>Rate per 100,000 Residents*</i>	76.3	71.8	76.3	76.6	74.7	75.1
<b>Annual Crash-Related Hospital Charges</b>						
Ashland County						
Total Crash Injury Hospital Charges	\$117,883	\$178,995	\$71,622	\$102,845	\$69,694	\$108,208
<i>Annual Charge per 1,000 Residents</i>	\$6,285	\$9,544	\$3,819	\$5,483	\$3,716	\$5,769
State of Wisconsin						
Total Crash Injury Hospital Charges	\$126,881,405	\$133,270,653	\$151,898,242	\$162,208,759	\$181,072,379	\$151,066,288
<i>Annual Charge per 1,000 Residents</i>	\$22,861	\$24,012	\$27,368	\$29,226	\$32,625	\$27,219
<b>Annual Crash-Related Emergency Room Visits</b>						
Ashland County						
Crash-Related Emergency Room Visits	55	67	49	63	50	57
<i>Rate per 100,000 Residents*</i>	293.2	357.2	261.3	335.9	266.6	305.2
State of Wisconsin						
Crash-Related Emergency Room Visits	31,664	31,866	33,269	31,268	30,615	\$31,755
<i>Rate per 100,000 Residents*</i>	570.5	574.1	599.4	563.4	551.6	572.1
<b>Annual Crash-Related Emergency Room Charges</b>						
Ashland County						
Total Crash Injury Emergency Room Charges	\$44,074	\$83,619	\$64,503	\$107,928	\$61,774	\$79,456
<i>Annual ER Charge per 1,000 Residents</i>	\$2,350	\$4,458	\$3,439	\$5,755	\$3,294	\$4,236
State of Wisconsin						
Crash Injury Emergency Room Charges	\$33,900,299	\$38,900,194	\$45,882,386	\$47,860,521	\$59,808,628	\$48,112,932
<i>Annual ER Charge per 1,000 Residents</i>	6,108	\$7,009	\$8,267	\$8,623	\$10,776	\$8,669

**Average Annual Population (computed 2003-2007 population estimates)**

Ashland County	18,755	* Reported as a rate per 100,000 residents to better highlight
State of Wisconsin	5,550,118	variations: 1.12 per 1,000 = 112 per 100,000.

Population data estimates are available at the Demographic Services Center, Wisconsin Department of Administration

## Residents of Ashland County



Zipcodes included in County of Resident Reports

**Residents of Ashland County**

54514	54517
54527	54546
54806	54846
54850	54855
54861	