
Residents of Chippewa County

**Motor Vehicle Crash Occupants, Hospitalizations, Emergency Room Visits and Fatalities
2003-2007**

	Auto	Truck	Motorcycle	Bicycle	Pedestrian	Total
Crash Occupants	9,721	3,036	120	33	49	12,959
Hospitalized Cases	127	40	23		8	199
Hospital Charges	\$3,916,323	\$970,832	\$965,435	\$80,584	\$230,388	\$6,163,562
Emergency Room Visits	1,048	216	58	16	29	1,140
Emergency Room Charges	\$1,415,849	\$303,374	\$119,430	\$13,731	\$33,954	\$1,414,666
Deaths	27	6	4	1	0	38

Indicates a value < 6

**Residents of Chippewa County
Hospitalization Charges by Vehicle Type
2003-2007**

	Auto	Truck	Motorcycle	Bicycle	Pedestrian
Hospital Charges	\$3,916,323	\$970,832	\$965,435	\$80,584	\$230,388
Total Crash Occupants	9,721	3,036	120	33	49
Hospital Charge/Occupant	\$402.87	\$319.77	\$8,045.29	\$2,441.94	\$4,701.80

**Hospitalization Rates by Vehicle Type
2003-2007**

	Auto	Truck	Motorcycle	Bicycle	Pedestrian
Hospital Cases	127	40	23		8
Total Crash Occupants	9,721	3,036	120	33	49
Hospitalization Rate/Crash Occupant	1.3%	1.3%	19.2%	3.0%	16.3%

**Emergency Room Charges by Vehicle Type
2003-2007**

	Auto	Truck	Motorcycle	Bicycle	Pedestrian
ER Charges	\$1,415,849	\$303,374	\$119,430	\$13,731	\$33,954
Crash Occupants	9,721	3,036	120	33	49
Emergency Room Charges/Crash Occupant	\$146	\$100	\$995	\$416	\$693

**Emergency Room Visits by Vehicle Type
2003-2007**

	Auto	Truck	Motorcycle	Bicycle	Pedestrian
Emergency Room Visits	1,048	216	58	16	29
Total Crash Occupants	9,721	3,036	120	33	49
Emergency Room Rate/Crash Occupant	10.8%	7.1%	48.3%	48.5%	59.2%

Indicates a value < 4

**Residents of Chippewa County
Occupants of Motor Vehicle Crashes
2003-2007**

	Auto	Truck	Motorcycle	Bicycle	Pedestrian	Total
2003	2,236	683	18		12	2,953
2004	2,003	658	34	7	8	2,710
2005	1,992	659	29	9	9	2,698
2006	1,700	492	18		11	2,227
2007	1,790	544	21	7	9	2,371
Five-Year Total	9,721	3,036	120	33	49	12,959

Indicates a value < 6

Residents of Chippewa County
Motor Vehicle Crash Hospitalizations, Hospital Charges and Emergency Room Visits and Charges
2003-2007

	Auto	Truck	Motorcycle	Bicycle	Pedestrian	Total
2003						
Number of Cases	21	11		0		38
Total Charges	\$416,125	\$282,675	\$132,394	\$0	\$53,102	\$884,296
2004						
Number of Cases	21	8		0		34
Total Charges	\$772,062	\$137,126	\$70,812	\$0	\$10,279	\$990,279
2005						
Number of Cases	34	7	7			51
Total Charges	\$1,341,387	\$148,568	\$295,405	\$80,584	\$74,088	\$1,940,032
2006						
Number of Cases	25	7		0		37
Total Charges	\$629,755	\$89,973	\$59,608	\$0	\$30,877	\$810,213
2007						
Number of Cases	26	7		0		39
Total Charges	\$756,994	\$312,490	\$407,216	\$0	\$62,042	\$1,538,742
Five-YearTotal						
Number of Cases	127	40	23		8	199
Total Charges	\$3,916,323	\$970,832	\$965,435	\$80,584	\$230,388	\$6,163,562

Motor Vehicle Crash Emergency Room Visits and Charges
2003-2007

	Auto	Truck	Motorcycle	Bicycle	Pedestrian	Total
2003						
Number of Cases	211	48	11			278
Total Charges	\$221,265	\$43,056	\$12,718	\$705	\$8,673	\$286,417
2004						
Number of Cases	213	48	14			284
Total Charges	\$221,056	\$54,742	\$24,815	\$1,848	\$7,422	\$309,883
2005						
Number of Cases	223	63	19		7	317
Total Charges	\$302,634	\$95,506	\$44,650	\$7,910	\$8,018	\$458,718
2006						
Number of Cases	213	32	8			261
Total Charges	\$281,345	\$57,565	\$10,009	\$893	\$9,836	\$359,648
2007						
Number of Cases	188	25				227
Total Charges	\$389,549	\$52,505	\$27,238	\$2,375		\$471,672
Five -Year Total						
Number of Cases	1,048	216	58	16	29	1,140
Total Charges	\$1,415,849	\$303,374	\$119,430	\$13,731	\$33,954	\$1,414,666

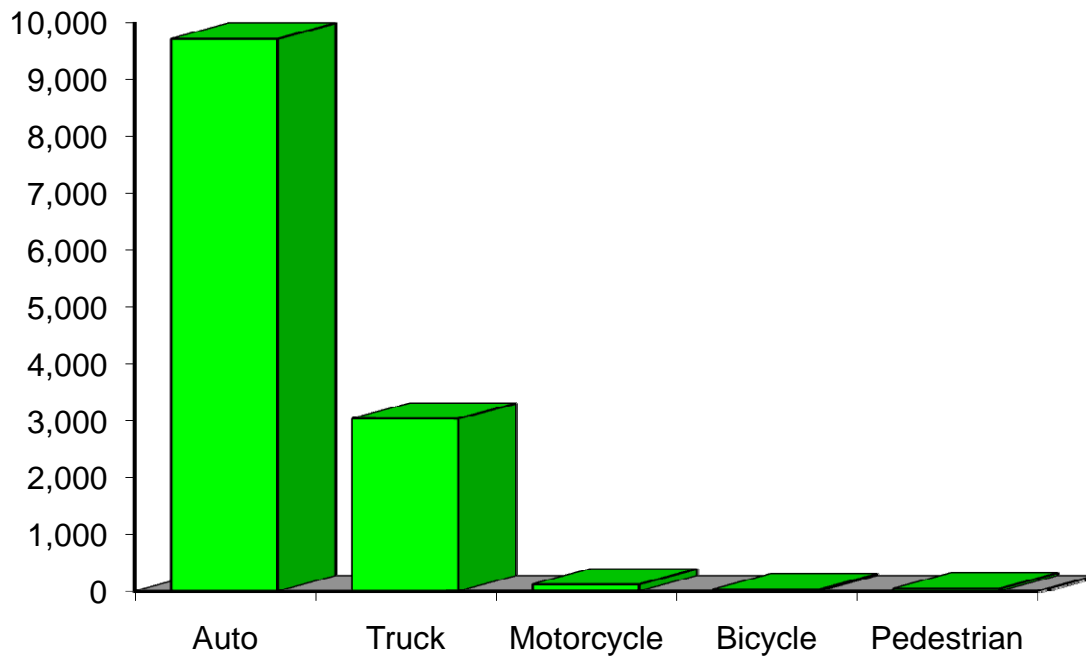
Indicates a value < 6

**Residents of Chippewa County
Motor Vehicle Crash Deaths
2003-2007**

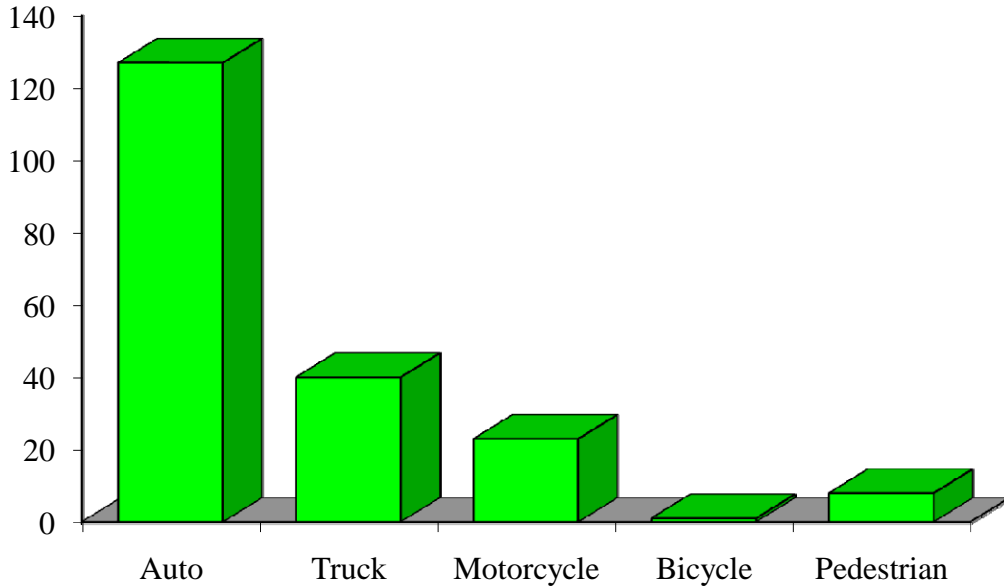
	Auto	Truck	Motorcycle	Bicycle	Pedestrian	Total
2003		0		0	0	7
2004	7			0	0	9
2005	8	0	0	0	0	8
2006				0	0	
2007					0	9
Five-Year Total	27				0	38

Indicates a value < 6

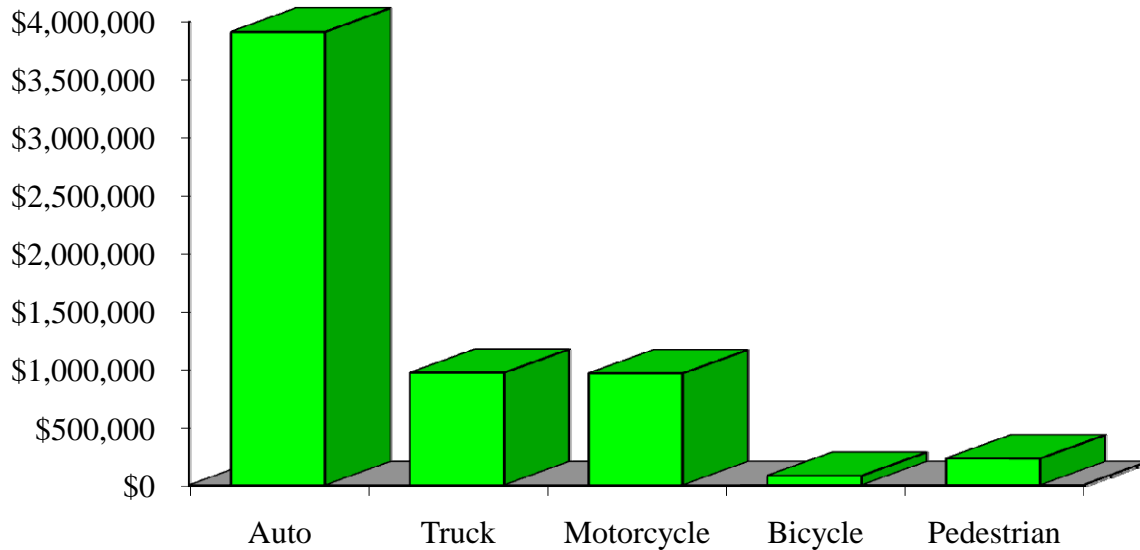
Crash Occupants by Vehicle Type Residents of Chippewa County, 2003-2007



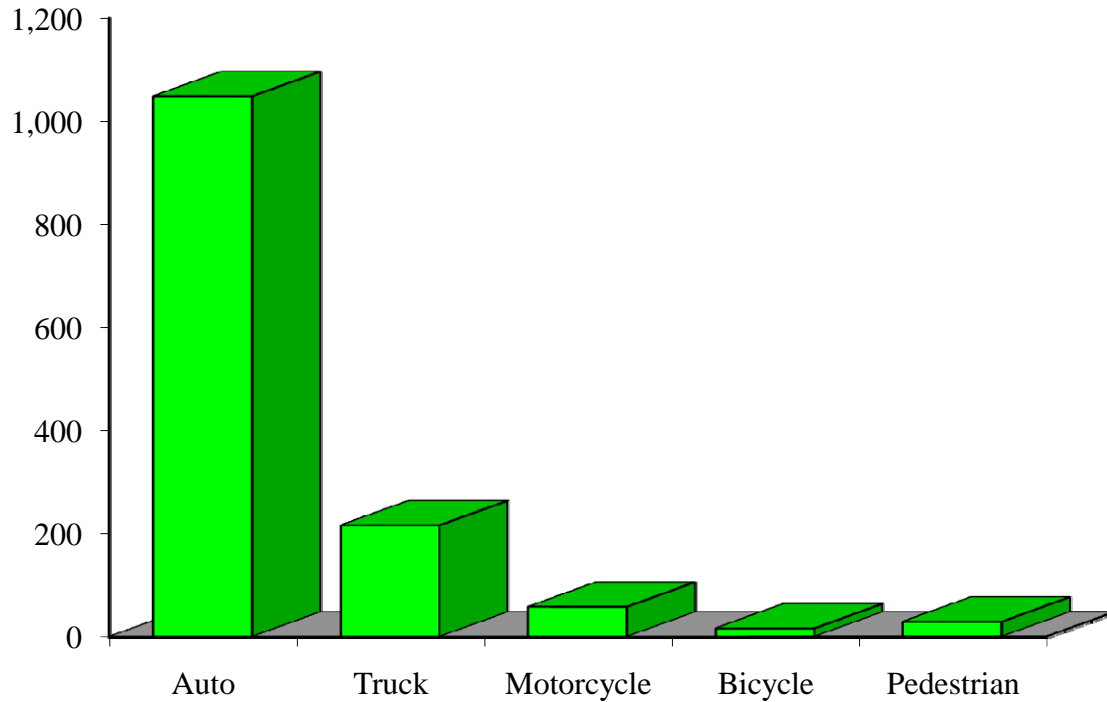
Hospitalizations by Vehicle Type Residents of Chippewa County, 2003-2007



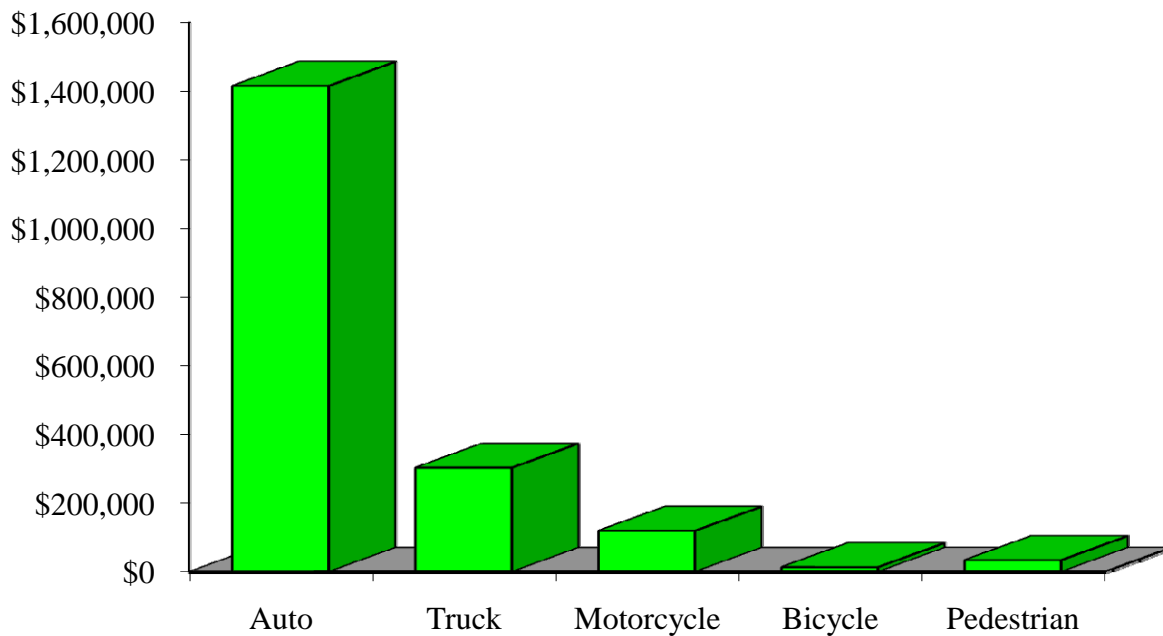
Hospital Charges by Vehicle Type Residents of Chippewa County, 2003-2007



Emergency Room Visits by Vehicle Type Residents of Chippewa County, 2003-2007



Emergency Room Charges by Vehicle Type Residents of Chippewa County, 2003-2007



Residents of Chippewa County and All Wisconsin 'Crash Occupants'

Crash Involvement Rates and Costs

2003-2007

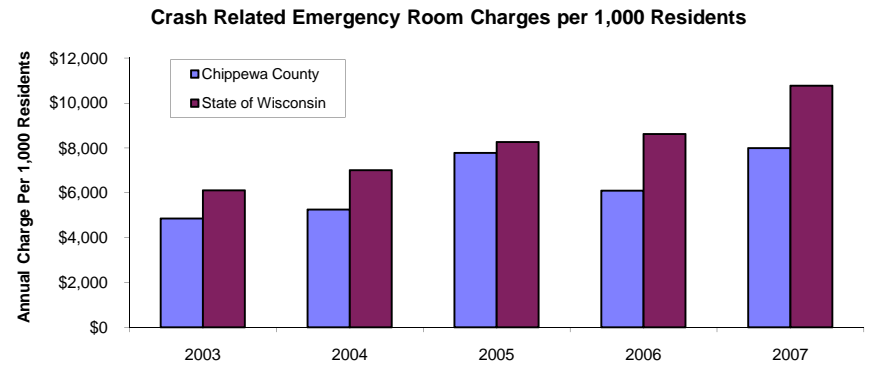
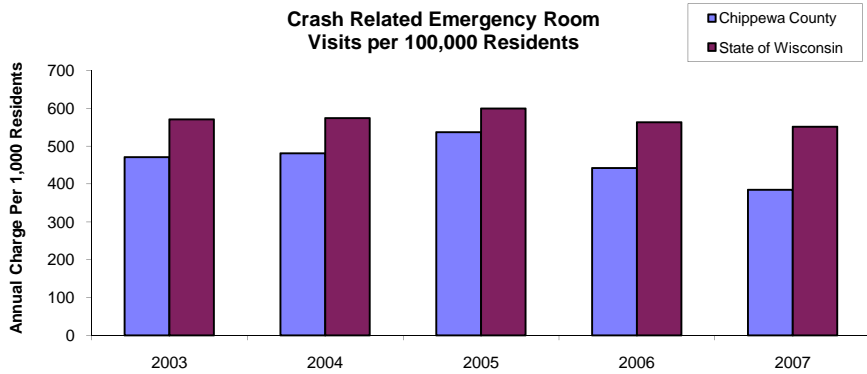
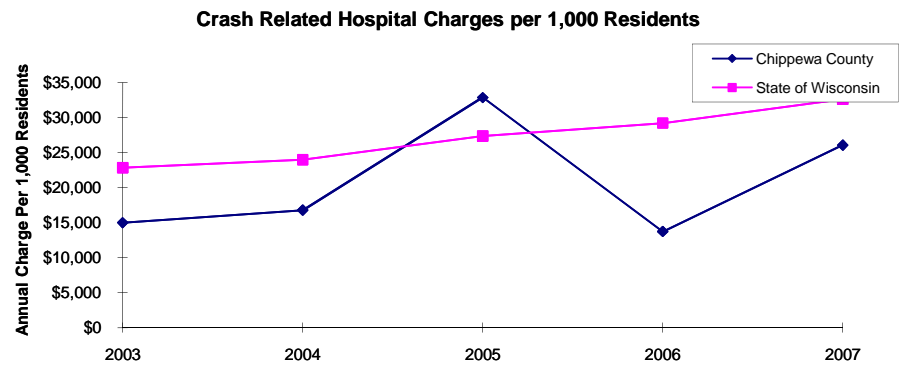
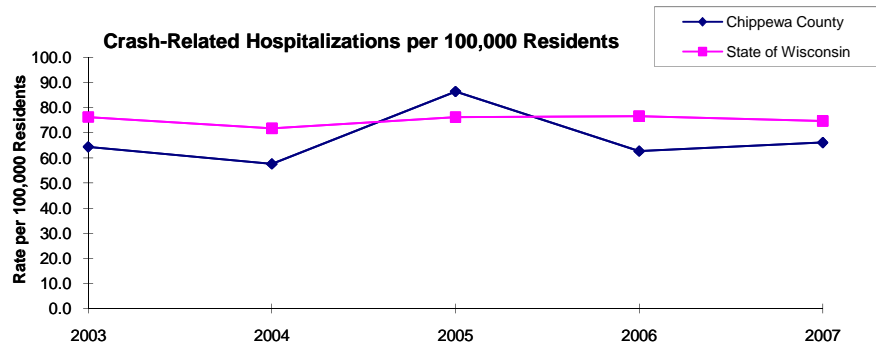
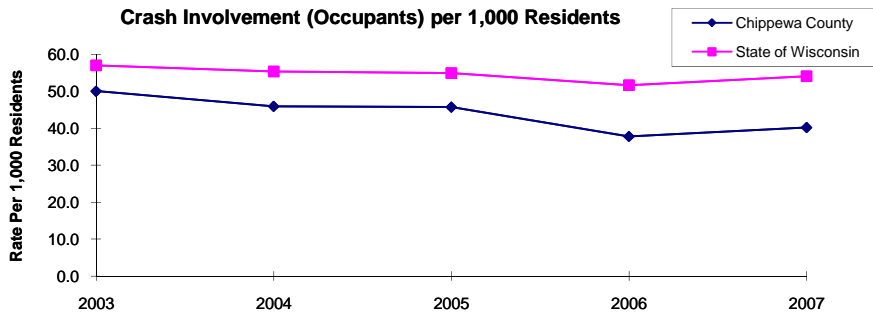
	2003	2004	2005	2006	2007	Average
Annual Crash Involvement						
<i>Chippewa County</i>						
Crash Occupants	2,953	2,710	2,698	2,227	2,371	2,592
<i>Rate per 1,000 Residents</i>	50.1	45.9	45.7	37.8	40.2	43.9
<i>State of Wisconsin</i>						
Crash Occupants	316,298	307,373	305,007	286,608	300,270	303,111
<i>Rate per 1,000 Residents</i>	57.0	55.4	55.0	51.6	54.1	54.6
Annual Crash-Related Hospitalizations						
<i>Chippewa County</i>						
Crash-Related Hospitalizations	38	34	51	37	39	40
<i>Rate per 100,000 Residents*</i>	64.4	57.6	86.5	62.7	66.1	67.5
<i>State of Wisconsin</i>						
Crash-Related Hospitalizations	4,234	3,983	4,232	4,253	4,146	4,170
<i>Rate per 100,000 Residents*</i>	76.3	71.8	76.3	76.6	74.7	75.1
Annual Crash-Related Hospital Charges						
<i>Chippewa County</i>						
Total Crash Injury Hospital Charges	\$884,296	\$990,279	\$1,940,032	\$810,213	\$1,538,742	\$1,232,712
<i>Annual Charge per 1,000 Residents</i>	\$14,990	\$16,787	\$32,887	\$13,735	\$26,085	\$20,897
<i>State of Wisconsin</i>						
Total Crash Injury Hospital Charges	\$126,881,405	\$133,270,653	\$151,898,242	\$162,208,759	\$181,072,379	\$151,066,288
<i>Annual Charge per 1,000 Residents</i>	\$22,861	\$24,012	\$27,368	\$29,226	\$32,625	\$27,219
Annual Crash-Related Emergency Room Visits						
<i>Chippewa County</i>						
Crash-Related Emergency Room Visits	278	284	317	261	227	272
<i>Rate per 100,000 Residents*</i>	471.3	481.4	537.4	442.4	384.8	461.5
<i>State of Wisconsin</i>						
Crash-Related Emergency Room Visits	31,664	31,866	33,269	31,268	30,615	\$31,755
<i>Rate per 100,000 Residents*</i>	570.5	574.1	599.4	563.4	551.6	572.1
Annual Crash-Related Emergency Room Charges						
<i>Chippewa County</i>						
Total Crash Injury Emergency Room Charges	\$286,417	\$309,883	\$458,718	\$359,648	\$471,672	\$399,980
<i>Annual ER Charge per 1,000 Residents</i>	\$4,855	\$5,253	\$7,776	\$6,097	\$7,996	\$6,780
<i>State of Wisconsin</i>						
Crash Injury Emergency Room Charges	\$33,900,299	\$38,900,194	\$45,882,386	\$47,860,521	\$59,808,628	\$48,112,932
<i>Annual ER Charge per 1,000 Residents</i>	6,108	\$7,009	\$8,267	\$8,623	\$10,776	\$8,669

Average Annual Population (computed 2003-2007 population estimates)

<i>Chippewa County</i>	58,991	* Reported as a rate per 100,000 residents to better highlight
<i>State of Wisconsin</i>	5,550,118	variations: 1.12 per 1,000 = 112 per 100,000.

Population data estimates are available at the Demographic Services Center, Wisconsin Department of Administration

Residents of Chippewa County



Zipcodes included in County of Resident Reports

Residents of Chippewa County

54724	54726
54727	54729
54732	54745
54748	54757
54768	54774