
Residents of Crawford County

Motor Vehicle Crash Occupants, Hospitalizations, Emergency Room Visits and Fatalities 2003-2007

	Auto	Truck	Motorcycle	Bicycle	Pedestrian	Total
Crash Occupants	2,627	972	39	8	10	3,656
Hospitalized Cases	28	17		0		51
Hospital Charges	\$995,114	\$633,178	\$289,789	\$0	\$36,879	\$1,954,960
Emergency Room Visits	317	58	15			312
Emergency Room Charges	\$360,937	\$55,631	\$18,208	\$5,478	\$3,277	\$325,857
Deaths	11	3	1	0	1	16

Indicates a value < 6

**Residents of Crawford County
Hospitalization Charges by Vehicle Type
2003-2007**

	Auto	Truck	Motorcycle	Bicycle	Pedestrian
Hospital Charges	\$995,114	\$633,178	\$289,789	\$0	\$36,879
Total Crash Occupants	2,627	972	39	8	10
Hospital Charge/Occupant	\$378.80	\$651.42	\$7,430.49	\$0.00	\$3,687.90

**Hospitalization Rates by Vehicle Type
2003-2007**

	Auto	Truck	Motorcycle	Bicycle	Pedestrian
Hospital Cases	28	17		0	
Total Crash Occupants	2,627	972	39	8	10
Hospitalization Rate/Crash Occupant	1.1%	1.7%	7.7%	0.0%	30.0%

**Emergency Room Charges by Vehicle Type
2003-2007**

	Auto	Truck	Motorcycle	Bicycle	Pedestrian
ER Charges	\$360,937	\$55,631	\$18,208	\$5,478	\$3,277
Crash Occupants	2,627	972	39	8	10
Emergency Room Charges/Crash Occupant	\$137	\$57	\$467	\$685	\$328

**Emergency Room Visits by Vehicle Type
2003-2007**

	Auto	Truck	Motorcycle	Bicycle	Pedestrian
Emergency Room Visits	317	58	15	5	6
Total Crash Occupants	2,627	972	39	8	10
Emergency Room Rate/Crash Occupant	12.1%	6.0%	38.5%	62.5%	60.0%

Indicates a value < 4

**Residents of Crawford County
Occupants of Motor Vehicle Crashes
2003-2007**

	Auto	Truck	Motorcycle	Bicycle	Pedestrian	Total
2003	590	203	10			810
2004	511	213			0	731
2005	482	188				679
2006	506	179	10			698
2007	538	189	8			738
Five-Year Total	2,627	972	39	8	10	3,656

Indicates a value < 6

**Residents of Crawford County
Motor Vehicle Crash Hospitalizations, Hospital Charges and Emergency Room Visits and Charges
2003-2007**

	Auto	Truck	Motorcycle	Bicycle	Pedestrian	Total
2003						
Number of Cases		7	0	0		13
Total Charges	\$252,499	\$329,418	\$0	\$0	\$16,089	\$598,006
2004						
Number of Cases	7			0	0	14
Total Charges	\$388,383	\$147,867	\$256,696	\$0	\$0	\$792,946
2005						
Number of Cases	8			0		12
Total Charges	\$163,006	\$82,573	\$5,296	\$0	\$18,439	\$269,314
2006						
Number of Cases		0	0	0	0	
Total Charges	\$23,184	\$0	\$0	\$0	\$0	\$23,184
2007						
Number of Cases				0		9
Total Charges	\$168,042	\$73,320	\$27,797	\$0	\$2,351	\$271,510
Five-YearTotal						
Number of Cases	28	17		0		51
Total Charges	\$995,114	\$633,178	\$289,789	\$0	\$36,879	\$1,954,960

**Motor Vehicle Crash Emergency Room Visits and Charges
2003-2007**

	Auto	Truck	Motorcycle	Bicycle	Pedestrian	Total
2003						
Number of Cases	75	12				97
Total Charges	\$64,186	\$8,168	\$4,651	\$454	\$1,616	\$79,075
2004						
Number of Cases	47	11			0	61
Total Charges	\$47,791	\$11,576	\$2,515	\$415	\$0	\$62,297
2005						
Number of Cases	62	14		0		78
Total Charges	\$74,756	\$17,162	\$1,161	\$0	\$357	\$93,436
2006						
Number of Cases	60	9				76
Total Charges	\$72,060	\$9,780	\$7,657	\$249	\$1,303	\$91,049
2007						
Number of Cases	73	12				89
Total Charges	\$102,144	\$8,945	\$2,224	\$4,360		\$117,674
Five -Year Total						
Number of Cases	317	58	15			312
Total Charges	\$360,937	\$55,631	\$18,208	\$5,478	\$3,277	\$325,857

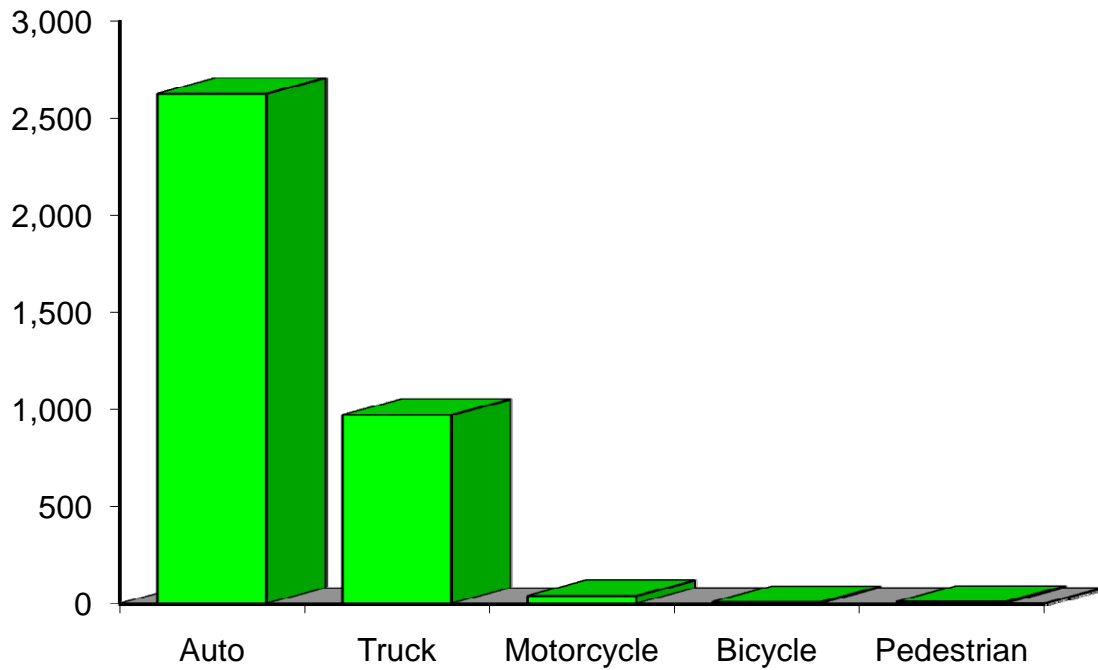
Indicates a value < 6

**Residents of Crawford County
Motor Vehicle Crash Deaths
2003-2007**

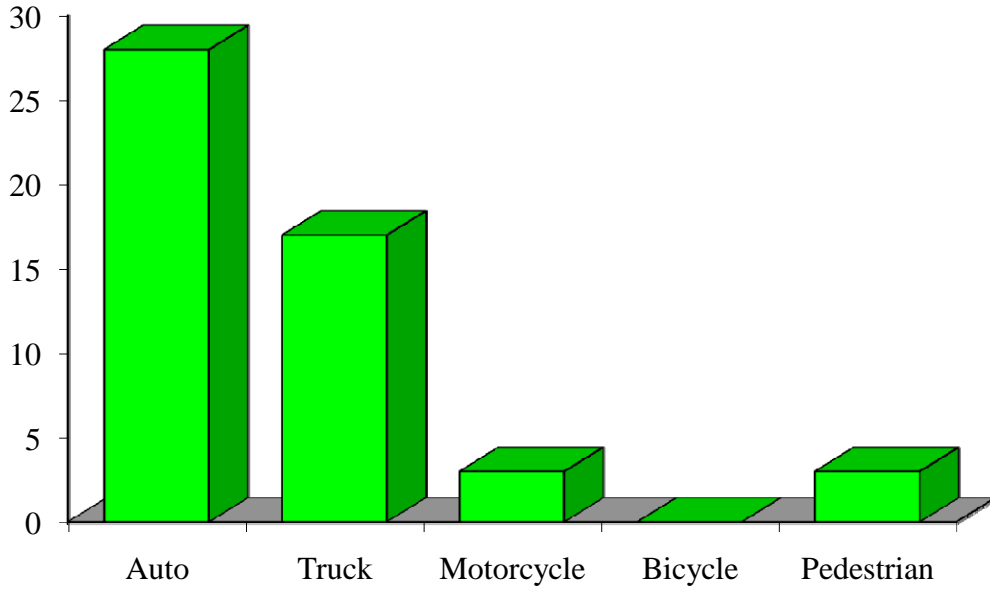
	Auto	Truck	Motorcycle	Bicycle	Pedestrian	Total
2003	0	0	0	0	0	0
2004		0	0	0	0	
2005			0	0	0	7
2006	0	0	0	0		
2007				0	0	
Five-Year Total	11			0		16

Indicates a value < 6

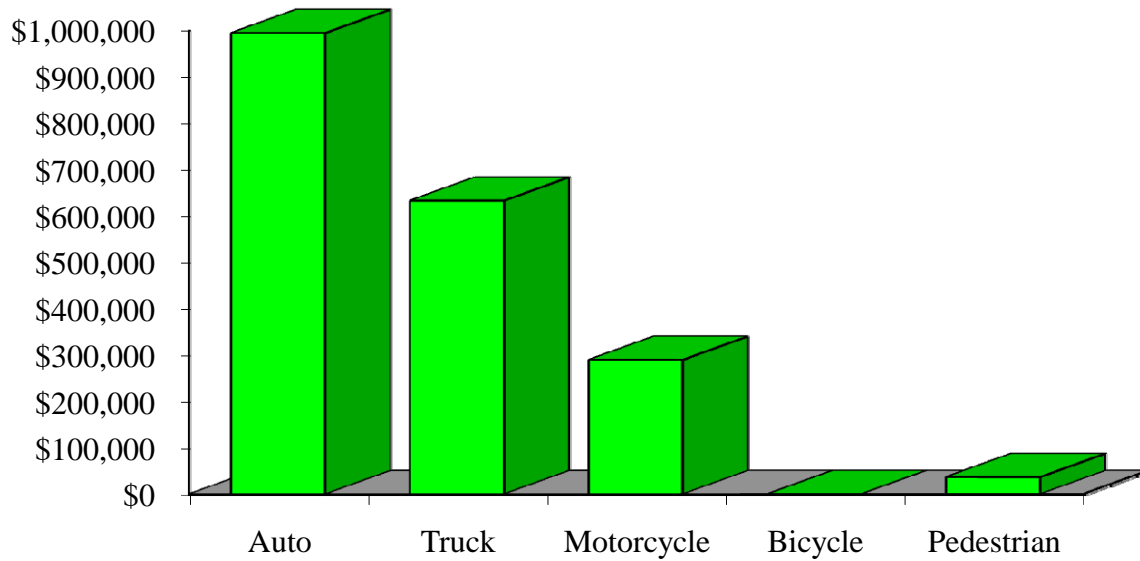
Crash Occupants by Vehicle Type Residents of Crawford County, 2003-2007



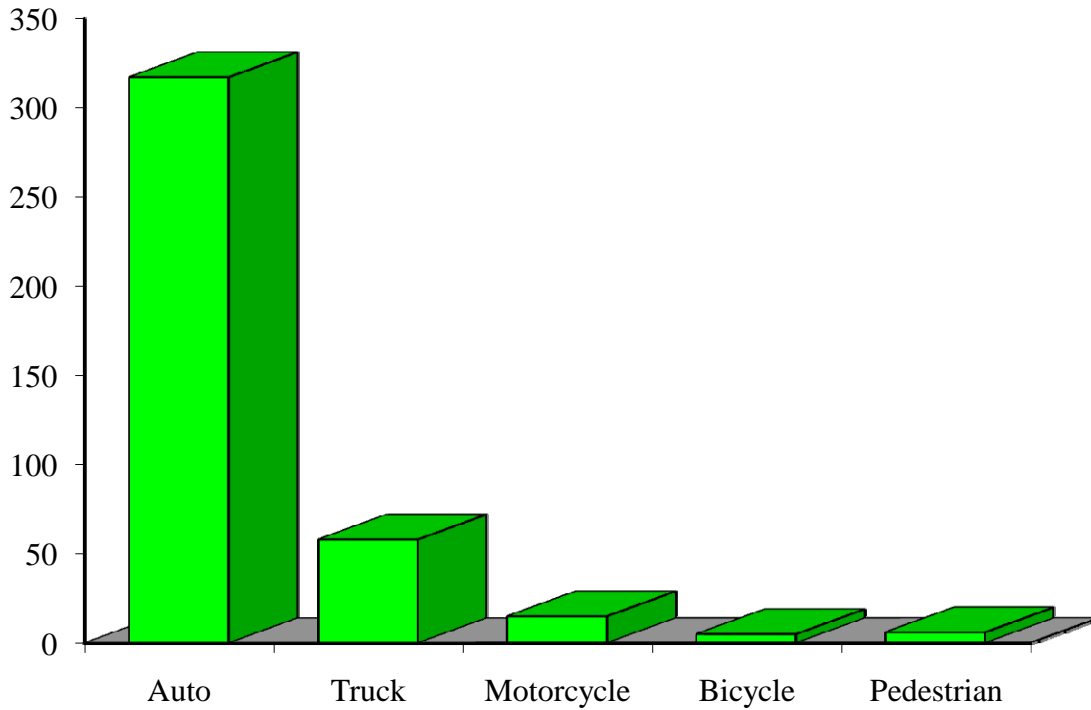
Hospitalizations by Vehicle Type Residents of Crawford County, 2003-2007



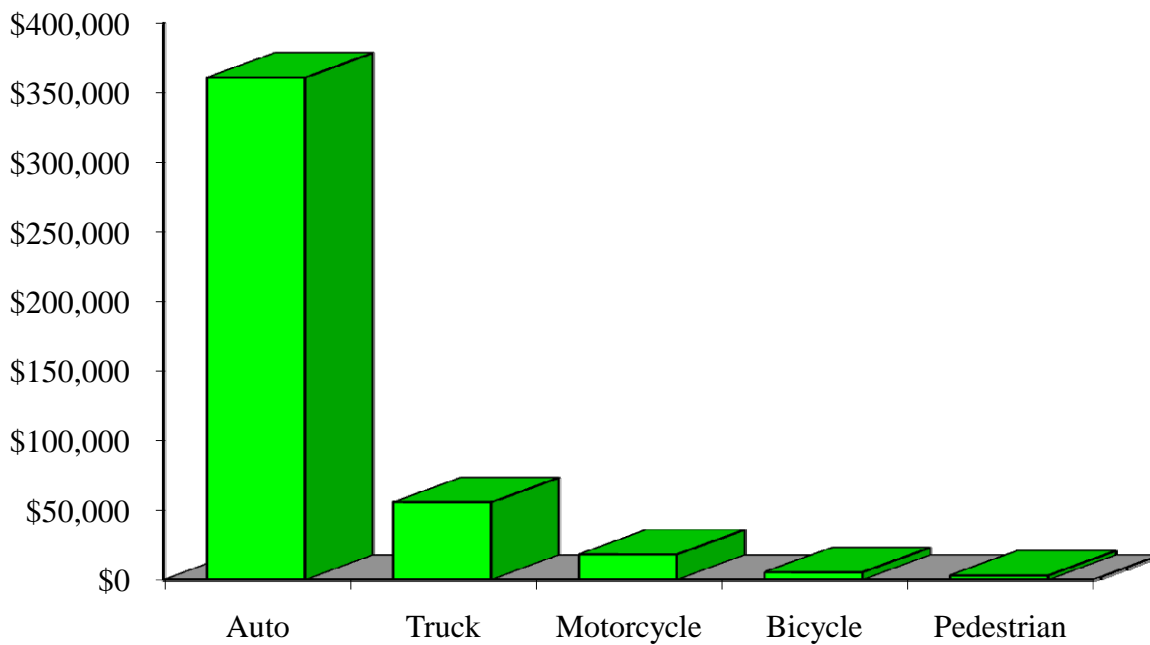
Hospital Charges by Vehicle Type Residents of Crawford County, 2003-2007



Emergency Room Visits by Vehicle Type Residents of Crawford County, 2003-2007



Emergency Room Charges by Vehicle Type Residents of Crawford County, 2003-2007



Residents of Crawford County and All Wisconsin 'Crash Occupants'

Crash Involvement Rates and Costs

2003-2007

	2003	2004	2005	2006	2007	Average
--	-------------	-------------	-------------	-------------	-------------	----------------

Annual Crash Involvement

<i>Crawford County</i>						
Crash Occupants	810	731	679	698	738	731
<i>Rate per 1,000 Residents</i>	47.9	43.2	40.2	41.3	43.7	43.2

State of Wisconsin

Crash Occupants	316,298	307,373	305,007	286,608	300,270	303,111
<i>Rate per 1,000 Residents</i>	57.0	55.4	55.0	51.6	54.1	54.6

Annual Crash-Related Hospitalizations

<i>Crawford County</i>						
Crash-Related Hospitalizations	13	14	12		9	10
<i>Rate per 100,000 Residents*</i>	76.9	82.8	71.0	17.7	53.2	60.3

State of Wisconsin

Crash-Related Hospitalizations	4,234	3,983	4,232	4,253	4,146	4,170
<i>Rate per 100,000 Residents*</i>	76.3	71.8	76.3	76.6	74.7	75.1

Annual Crash-Related Hospital Charges

<i>Crawford County</i>						
Total Crash Injury Hospital Charges	\$598,006	\$792,946	\$269,314	\$23,184	\$271,510	\$390,992
<i>Annual Charge per 1,000 Residents</i>	\$35,371	\$46,902	\$15,930	\$1,371	\$16,059	\$23,127

State of Wisconsin

Total Crash Injury Hospital Charges	\$126,881,405	\$133,270,653	\$151,898,242	\$162,208,759	\$181,072,379	\$151,066,288
<i>Annual Charge per 1,000 Residents</i>	\$22,861	\$24,012	\$27,368	\$29,226	\$32,625	\$27,219

Annual Crash-Related Emergency Room Visits

<i>Crawford County</i>						
Crash-Related Emergency Room Visits	97	61	78	76	89	76
<i>Rate per 100,000 Residents*</i>	573.7	360.8	461.4	449.5	526.4	449.5

State of Wisconsin

Crash-Related Emergency Room Visits	31,664	31,866	33,269	31,268	30,615	\$31,755
<i>Rate per 100,000 Residents*</i>	570.5	574.1	599.4	563.4	551.6	572.1

Annual Crash-Related Emergency Room Charges

<i>Crawford County</i>						
Total Crash Injury Emergency Room Charges	\$79,075	\$62,297	\$93,436	\$91,049	\$117,674	\$91,114
<i>Annual ER Charge per 1,000 Residents</i>	\$4,677	\$3,685	\$5,527	\$5,385	\$6,960	\$5,389

State of Wisconsin

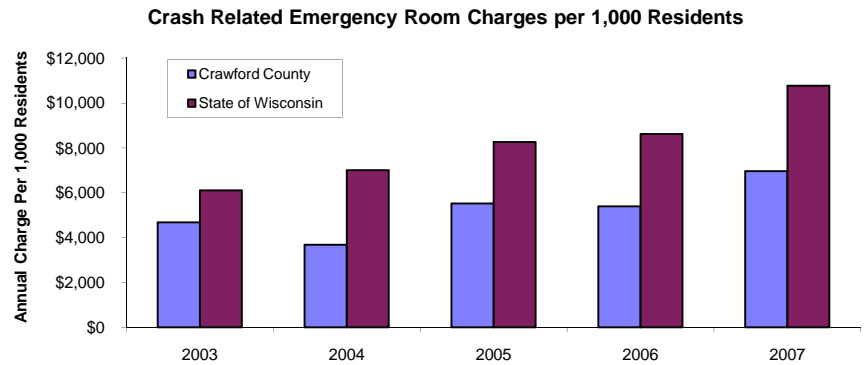
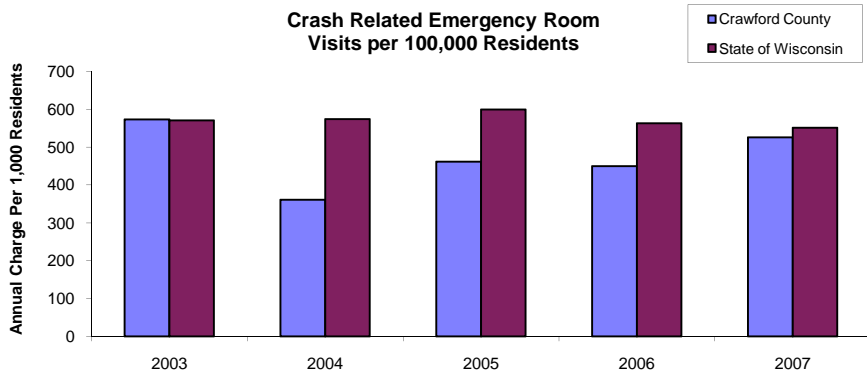
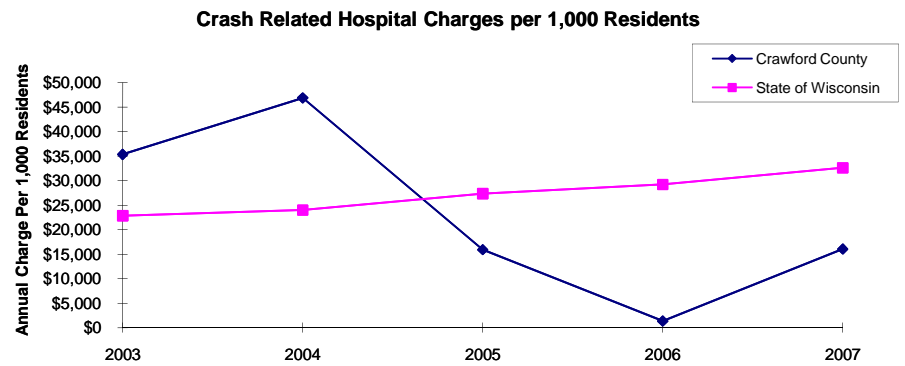
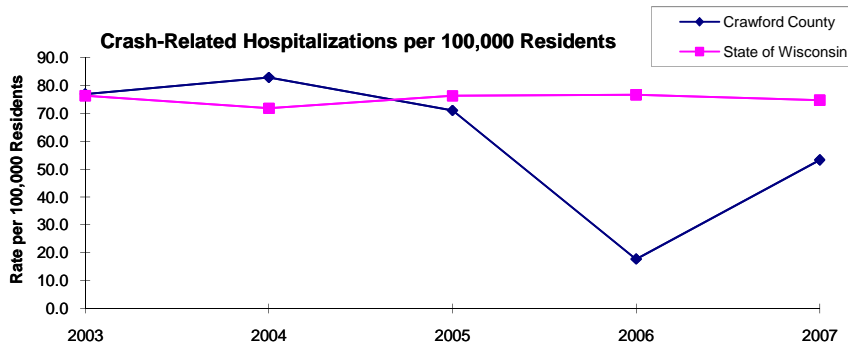
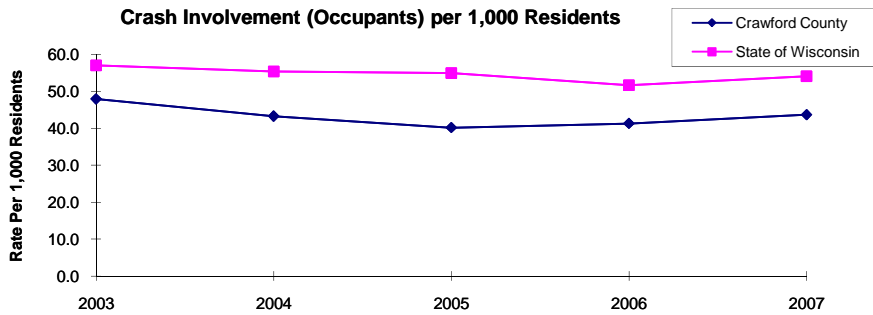
Crash Injury Emergency Room Charges	\$33,900,299	\$38,900,194	\$45,882,386	\$47,860,521	\$59,808,628	\$48,112,932
<i>Annual ER Charge per 1,000 Residents</i>	6,108	\$7,009	\$8,267	\$8,623	\$10,776	\$8,669

Average Annual Population (computed 2003-2007 population estimates)

<i>Crawford County</i>	16,907	* Reported as a rate per 100,000 residents to better highlight
<i>State of Wisconsin</i>	5,550,118	variations: 1.12 per 1,000 = 112 per 100,000.

Population data estimates are available at the Demographic Services Center, Wisconsin Department of Administration

Residents of Crawford County



Zipcodes included in County of Resident Reports

Residents of Crawford County

53821	53826
54626	54628
54631	54640
54645	54654
54655	54657