

---

## Residents of Door County

### Motor Vehicle Crash Occupants, Hospitalizations, Emergency Room Visits and Fatalities 2003-2007

	Auto	Truck	Motorcycle	Bicycle	Pedestrian	Total
Crash Occupants	4,412	1,616	75	17	16	6,136
Hospitalized Cases	71	27	20			122
Hospital Charges	\$1,838,550	\$721,592	\$297,566	\$89,512	\$127,606	\$3,074,826
Emergency Room Visits	412	106	22	9	8	441
Emergency Room Charges	\$613,490	\$214,006	\$33,470	\$18,731	\$11,932	\$643,257
Deaths	11	3	1	0	1	16

Indicates a value < 6

**Residents of Door County  
Hospitalization Charges by Vehicle Type  
2003-2007**

	<b>Auto</b>	<b>Truck</b>	<b>Motorcycle</b>	<b>Bicycle</b>	<b>Pedestrian</b>
Hospital Charges	\$1,838,550	\$721,592	\$297,566	\$89,512	\$127,606
Total Crash Occupants	4,412	1,616	75	17	16
<b>Hospital Charge/Occupant</b>	\$416.72	\$446.53	\$3,967.55	\$5,265.41	\$7,975.38

**Hospitalization Rates by Vehicle Type  
2003-2007**

	<b>Auto</b>	<b>Truck</b>	<b>Motorcycle</b>	<b>Bicycle</b>	<b>Pedestrian</b>
Hospital Cases	71	27	20		
Total Crash Occupants	4,412	1,616	75	17	16
<b>Hospitalization Rate/Crash Occupant</b>	1.6%	1.7%	26.7%	11.8%	12.5%

**Emergency Room Charges by Vehicle Type  
2003-2007**

	<b>Auto</b>	<b>Truck</b>	<b>Motorcycle</b>	<b>Bicycle</b>	<b>Pedestrian</b>
ER Charges	\$613,490	\$214,006	\$33,470	\$18,731	\$11,932
Crash Occupants	4,412	1,616	75	17	16
<b>Emergency Room Charges/Crash Occupant</b>	\$139	\$132	\$446	\$1,102	\$746

**Emergency Room Visits by Vehicle Type  
2003-2007**

	<b>Auto</b>	<b>Truck</b>	<b>Motorcycle</b>	<b>Bicycle</b>	<b>Pedestrian</b>
Emergency Room Visits	412	106	22	9	8
Total Crash Occupants	4,412	1,616	75	17	16
<b>Emergency Room Rate/Crash Occupant</b>	9.3%	6.6%	29.3%	52.9%	50.0%

Indicates a value < 4

**Residents of Door County  
Occupants of Motor Vehicle Crashes  
2003-2007**

	<b>Auto</b>	<b>Truck</b>	<b>Motorcycle</b>	<b>Bicycle</b>	<b>Pedestrian</b>	<b>Total</b>
2003	948	396	14			1,368
2004	913	364				1,287
2005	935	295	25			1,260
2006	839	293	9			1,150
2007	777	268	22		0	1,071
Five-Year Total	4,412	1,616	75	17	16	6,136

Indicates a value < 6

**Residents of Door County  
Motor Vehicle Crash Hospitalizations, Hospital Charges and Emergency Room Visits and Charges  
2003-2007**

	<b>Auto</b>	<b>Truck</b>	<b>Motorcycle</b>	<b>Bicycle</b>	<b>Pedestrian</b>	<b>Total</b>
<b>2003</b>						
Number of Cases	20	9		0		34
Total Charges	\$778,937	\$250,508	\$41,584	\$0	\$107,392	\$1,178,421
<b>2004</b>						
Number of Cases	14	7	0		0	22
Total Charges	\$260,722	\$113,091	\$0	\$68,064	\$0	\$441,877
<b>2005</b>						
Number of Cases	15			0		26
Total Charges	\$290,063	\$139,047	\$56,902	\$0	\$20,214	\$506,226
<b>2006</b>						
Number of Cases	16			0	0	23
Total Charges	\$386,511	\$155,557	\$62,216	\$0	\$0	\$604,284
<b>2007</b>						
Number of Cases			8		0	17
Total Charges	\$122,317	\$63,389	\$136,864	\$21,448	0	\$344,018
<b>Five-YearTotal</b>						
Number of Cases	71	27	20			122
Total Charges	\$1,838,550	\$721,592	\$297,566	\$89,512	\$127,606	\$3,074,826

**Motor Vehicle Crash Emergency Room Visits and Charges  
2003-2007**

	<b>Auto</b>	<b>Truck</b>	<b>Motorcycle</b>	<b>Bicycle</b>	<b>Pedestrian</b>	<b>Total</b>
<b>2003</b>						
Number of Cases	79	27				113
Total Charges	\$69,440	\$27,189	\$4,516	\$3,534	\$5,193	\$109,872
<b>2004</b>						
Number of Cases	81	22				109
Total Charges	\$108,793	\$43,385	\$9,679	\$919	\$295	\$163,071
<b>2005</b>						
Number of Cases	99	19	9			130
Total Charges	\$145,532	\$59,109	\$8,401	\$1,289	\$503	\$214,834
<b>2006</b>						
Number of Cases	63	20				89
Total Charges	\$97,270	\$43,787	\$508	\$7,974	\$5,941	\$155,480
<b>2007</b>						
Number of Cases	90	18			0	116
Total Charges	\$192,455	\$40,536	\$10,366	\$5,015	0	\$248,372
<b>Five -Year Total</b>						
Number of Cases	412	106	22	9	8	441
Total Charges	\$613,490	\$214,006	\$33,470	\$18,731	\$11,932	\$643,257

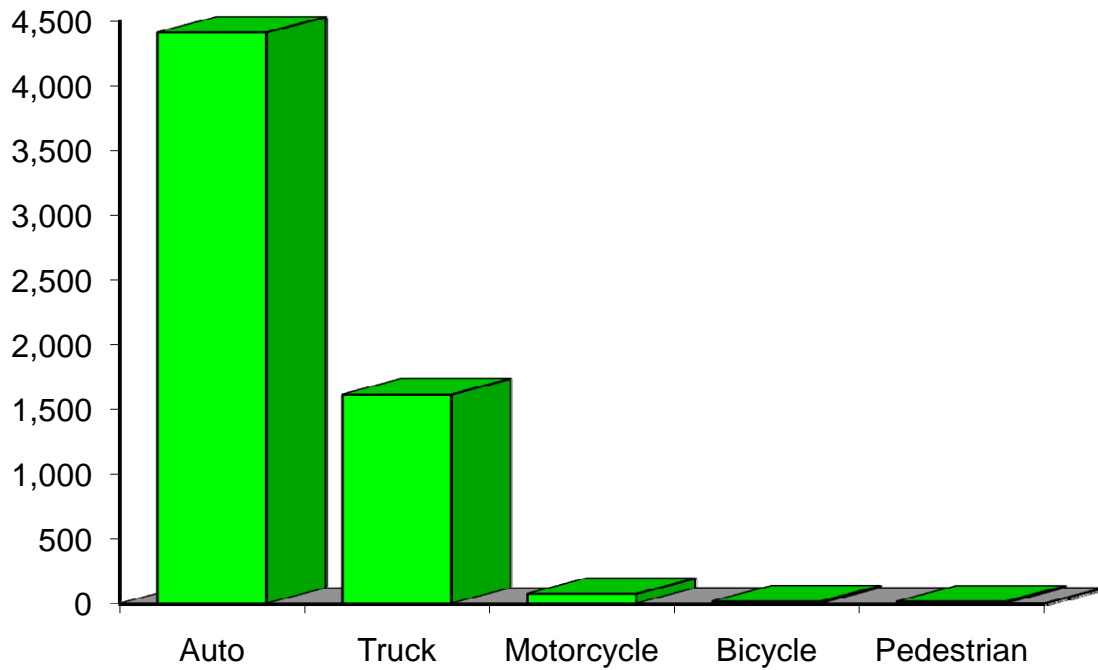
Indicates a value < 6

**Residents of Door County  
Motor Vehicle Crash Deaths  
2003-2007**

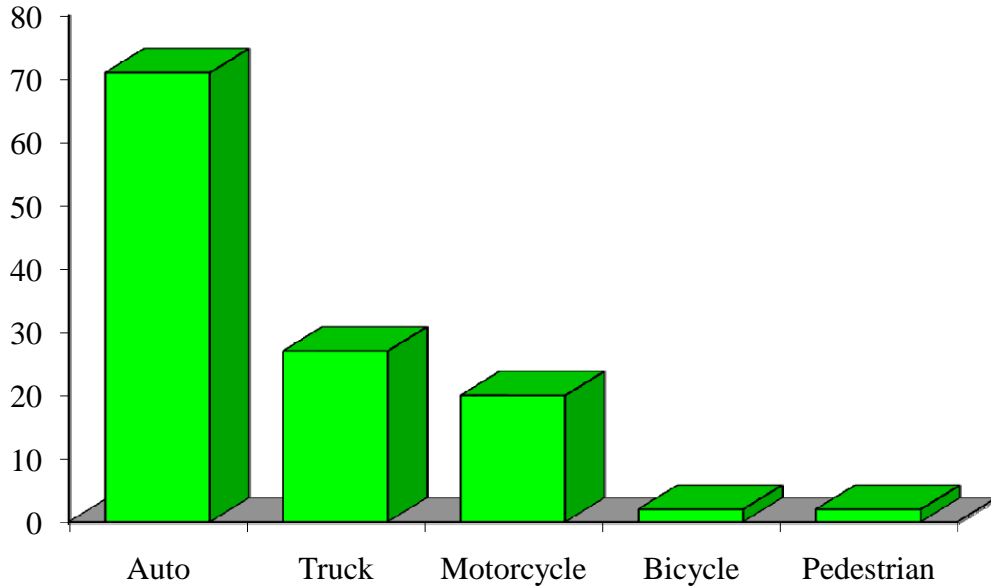
	<b>Auto</b>	<b>Truck</b>	<b>Motorcycle</b>	<b>Bicycle</b>	<b>Pedestrian</b>	<b>Total</b>
2003		0		0		
2004	0	0	0	0	0	0
2005			0	0	0	
2006			0	0	0	
2007			0	0	0	
Five-Year Total	11			0		16

Indicates a value < 6

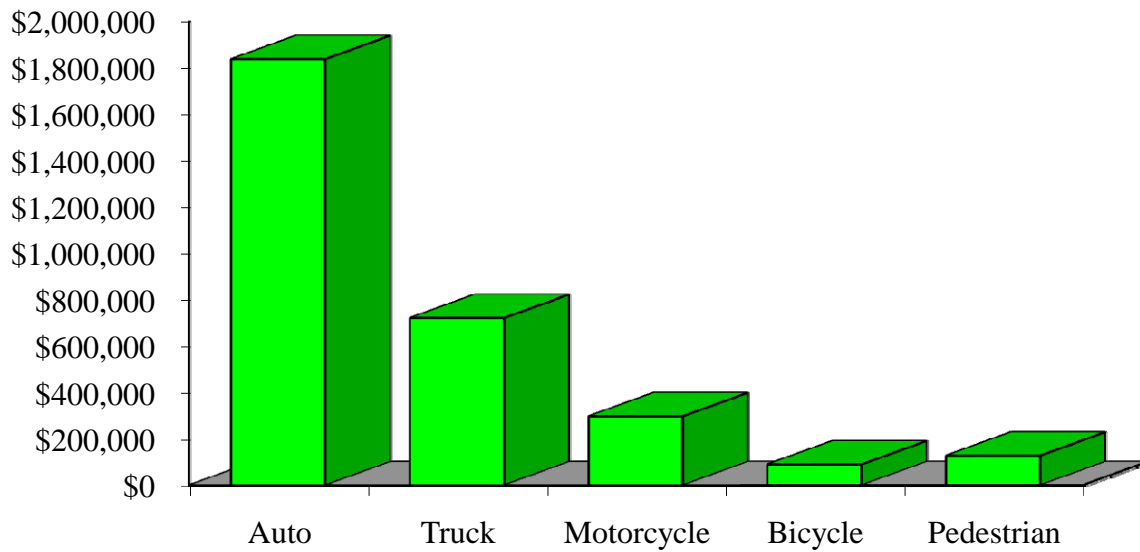
## Crash Occupants by Vehicle Type Residents of Door County, 2003-2007



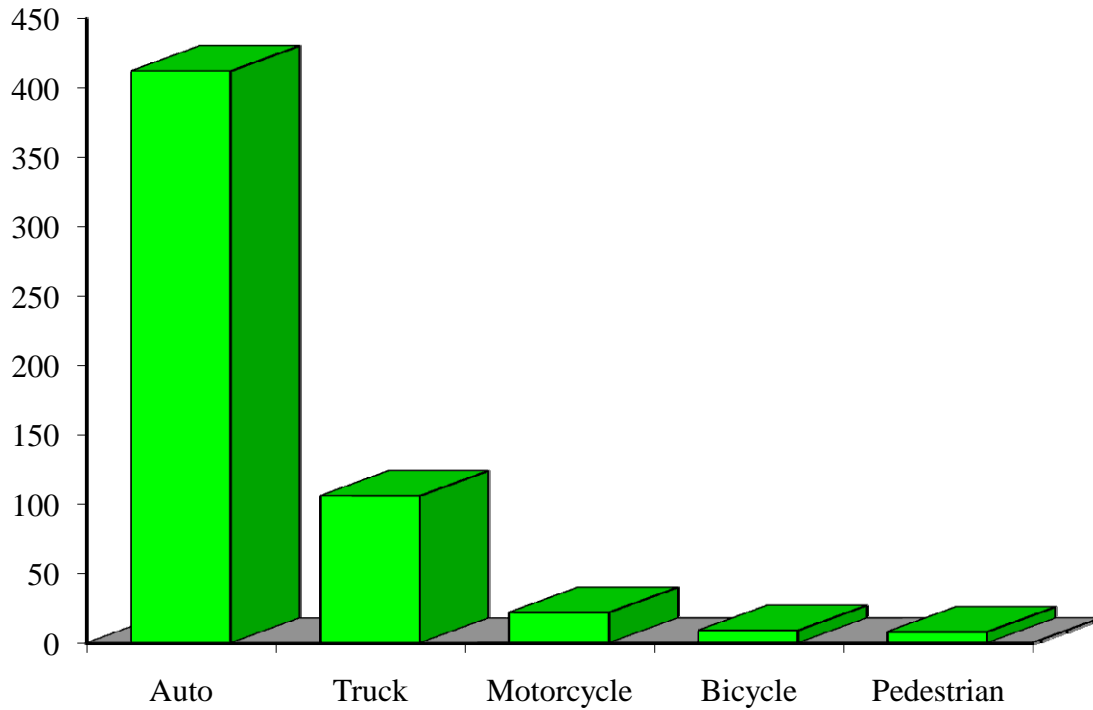
### Hospitalizations by Vehicle Type Residents of Door County, 2003-2007



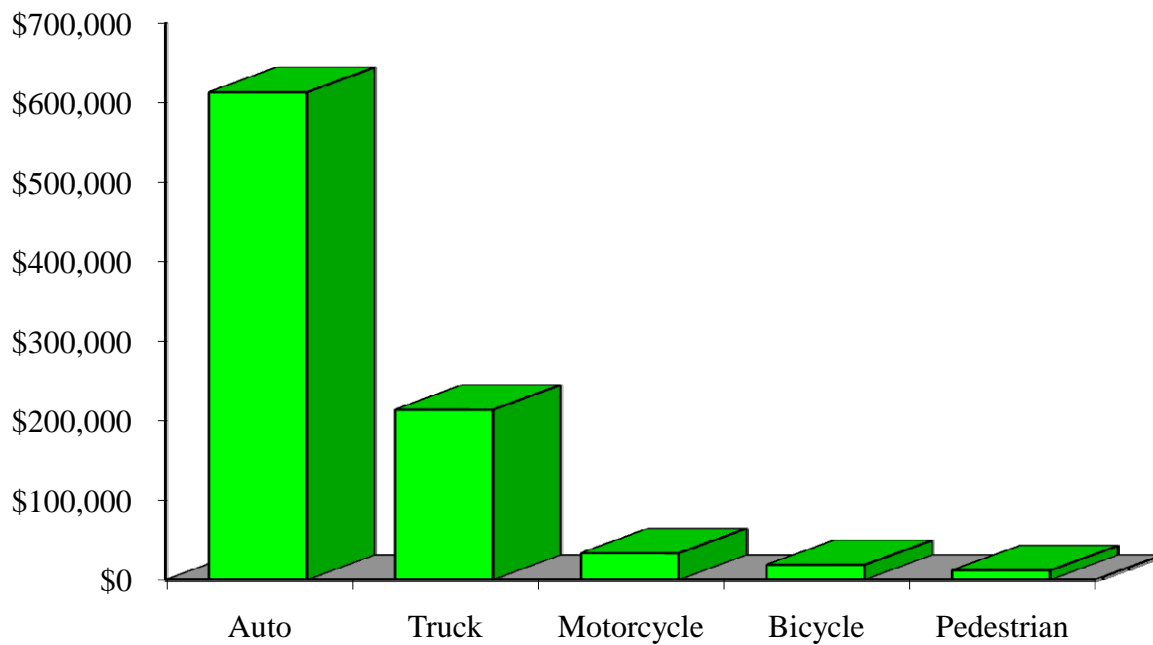
### Hospital Charges by Vehicle Type Residents of Door County, 2003-2007



### Emergency Room Visits by Vehicle Type Residents of Door County, 2003-2007



### Emergency Room Charges by Vehicle Type Residents of Door County, 2003-2007



**Residents of Door County and All Wisconsin 'Crash Occupants'**

**Crash Involvement Rates and Costs**

**2003-2007**

	<b>2003</b>	<b>2004</b>	<b>2005</b>	<b>2006</b>	<b>2007</b>	<b>Average</b>
--	-------------	-------------	-------------	-------------	-------------	----------------

**Annual Crash Involvement**

<i>Door County</i>						
Crash Occupants	1,368	1,287	1,260	1,150	1,071	1,227
<i>Rate per 1,000 Residents</i>	47.5	44.6	43.7	39.9	37.2	42.6

<i>State of Wisconsin</i>						
Crash Occupants	316,298	307,373	305,007	286,608	300,270	303,111
<i>Rate per 1,000 Residents</i>	57.0	55.4	55.0	51.6	54.1	54.6

**Annual Crash-Related Hospitalizations**

<i>Door County</i>						
Crash-Related Hospitalizations	34	22	26	23	17	24
<i>Rate per 100,000 Residents*</i>	117.9	76.3	90.2	79.8	59.0	84.6

<i>State of Wisconsin</i>						
Crash-Related Hospitalizations	4,234	3,983	4,232	4,253	4,146	4,170
<i>Rate per 100,000 Residents*</i>	76.3	71.8	76.3	76.6	74.7	75.1

**Annual Crash-Related Hospital Charges**

<i>Door County</i>						
Total Crash Injury Hospital Charges	\$1,178,421	\$441,877	\$506,226	\$604,284	\$344,018	\$614,965
<i>Annual Charge per 1,000 Residents</i>	\$40,877	\$15,328	\$17,560	\$20,962	\$11,933	\$21,332

<i>State of Wisconsin</i>						
Total Crash Injury Hospital Charges	\$126,881,405	\$133,270,653	\$151,898,242	\$162,208,759	\$181,072,379	\$151,066,288
<i>Annual Charge per 1,000 Residents</i>	\$22,861	\$24,012	\$27,368	\$29,226	\$32,625	\$27,219

**Annual Crash-Related Emergency Room Visits**

<i>Door County</i>						
Crash-Related Emergency Room Visits	113	109	130	89	116	111
<i>Rate per 100,000 Residents*</i>	392.0	378.1	450.9	308.7	402.4	385.0

<i>State of Wisconsin</i>						
Crash-Related Emergency Room Visits	31,664	31,866	33,269	31,268	30,615	\$31,755
<i>Rate per 100,000 Residents*</i>	570.5	574.1	599.4	563.4	551.6	572.1

**Annual Crash-Related Emergency Room Charges**

<i>Door County</i>						
Total Crash Injury Emergency Room Charges	\$109,872	\$163,071	\$214,834	\$155,480	\$248,372	\$195,439
<i>Annual ER Charge per 1,000 Residents</i>	\$3,811	\$5,657	\$7,452	\$5,393	\$8,616	\$6,779

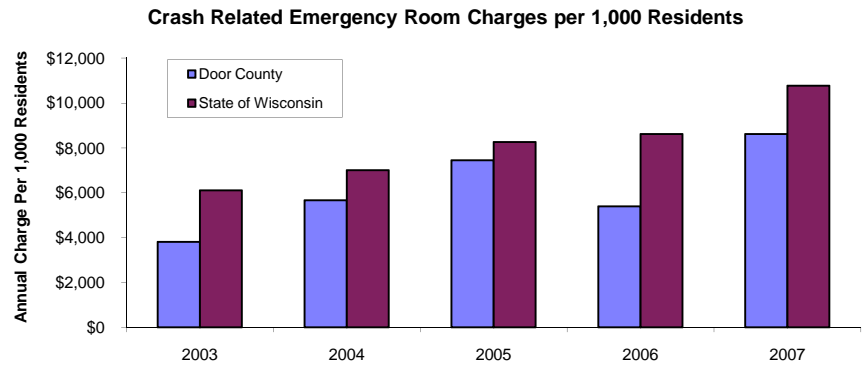
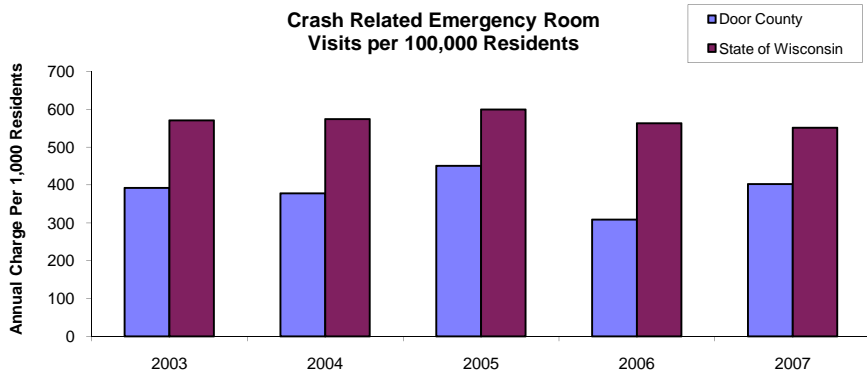
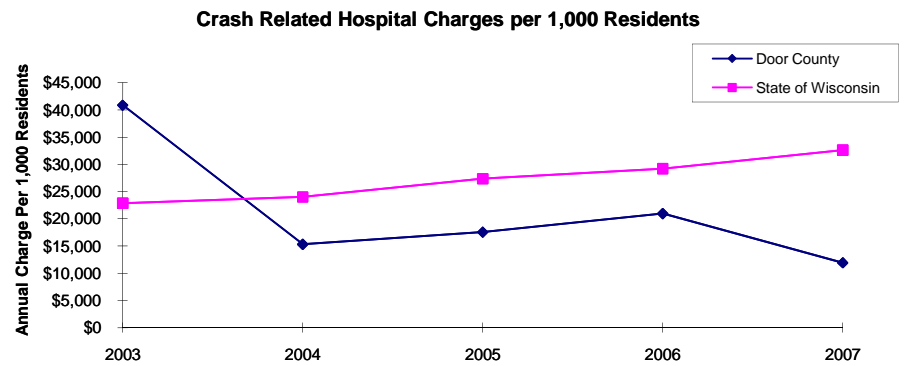
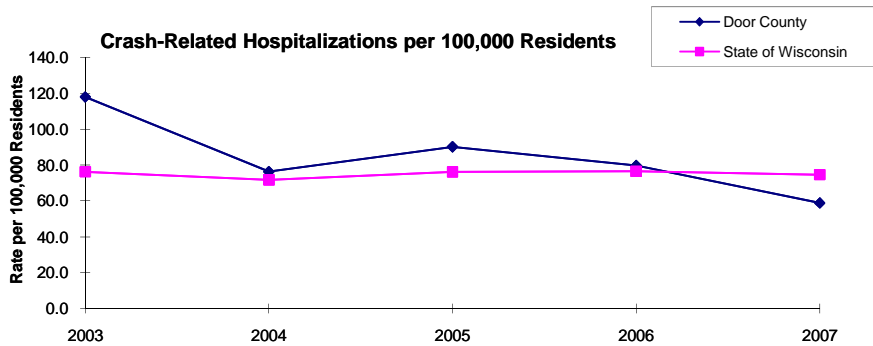
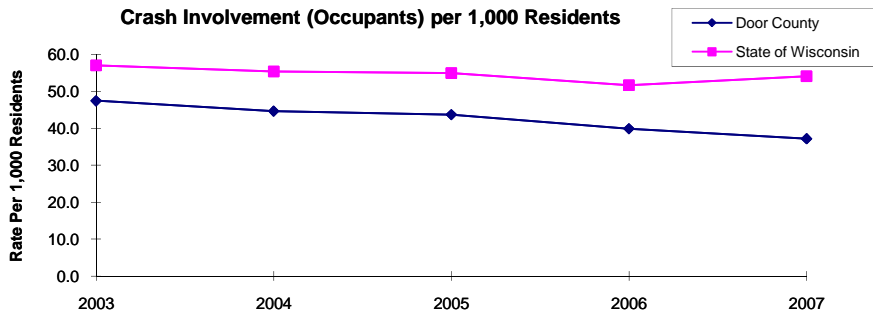
<i>State of Wisconsin</i>						
Crash Injury Emergency Room Charges	\$33,900,299	\$38,900,194	\$45,882,386	\$47,860,521	\$59,808,628	\$48,112,932
<i>Annual ER Charge per 1,000 Residents</i>	6,108	\$7,009	\$8,267	\$8,623	\$10,776	\$8,669

**Average Annual Population (computed 2003-2007 population estimates)**

<i>Door County</i>	28,828	* Reported as a rate per 100,000 residents to better highlight
<i>State of Wisconsin</i>	5,550,118	variations: 1.12 per 1,000 = 112 per 100,000.

Population data estimates are available at the Demographic Services Center, Wisconsin Department of Administration

## Residents of Door County



Zipcodes included in County of Resident Reports

**Residents of Door County**

54202	54204
54209	54210
54211	54212
54213	54226
54234	54235
54246	