
Residents of Douglas County

Motor Vehicle Crash Occupants, Hospitalizations, Emergency Room Visits and Fatalities 2003-2007

	Auto	Truck	Motorcycle	Bicycle	Pedestrian	Total
Crash Occupants	6,392	1,826	62	48	69	8,397
Hospitalized Cases	8			0	0	13
Hospital Charges	\$249,895	\$29,158	\$29,826	\$0	\$0	\$308,879
Emergency Room Visits	471	85	11	26	30	509
Emergency Room Charges	\$439,852	\$88,034	\$15,534	\$25,008	\$25,350	\$465,362
Deaths	14	7	2	0	0	23

Indicates a value < 6

**Residents of Douglas County
Hospitalization Charges by Vehicle Type
2003-2007**

	Auto	Truck	Motorcycle	Bicycle	Pedestrian
Hospital Charges	\$249,895	\$29,158	\$29,826	\$0	\$0
Total Crash Occupants	6,392	1,826	62	48	69
Hospital Charge/Occupant	\$39.09	\$15.97	\$481.06	\$0.00	\$0.00

**Hospitalization Rates by Vehicle Type
2003-2007**

	Auto	Truck	Motorcycle	Bicycle	Pedestrian
Hospital Cases	8			0	0
Total Crash Occupants	6,392	1,826	62	48	69
Hospitalization Rate/Crash Occupant	0.1%	0.2%	1.6%	0.0%	0.0%

**Emergency Room Charges by Vehicle Type
2003-2007**

	Auto	Truck	Motorcycle	Bicycle	Pedestrian
ER Charges	\$439,852	\$88,034	\$15,534	\$25,008	\$25,350
Crash Occupants	6,392	1,826	62	48	69
Emergency Room Charges/Crash Occupant	\$69	\$48	\$251	\$521	\$367

**Emergency Room Visits by Vehicle Type
2003-2007**

	Auto	Truck	Motorcycle	Bicycle	Pedestrian
Emergency Room Visits	471	85	11	26	30
Total Crash Occupants	6,392	1,826	62	48	69
Emergency Room Rate/Crash Occupant	7.4%	4.7%	17.7%	54.2%	43.5%

Indicates a value < 4

**Residents of Douglas County
Occupants of Motor Vehicle Crashes
2003-2007**

	Auto	Truck	Motorcycle	Bicycle	Pedestrian	Total
2003	1,409	383	15		15	1,827
2004	1,342	436	7	15	13	1,813
2005	1,296	347	16	14	16	1,689
2006	1,174	338	12	9	13	1,546
2007	1,171	322	12		12	1,522
Five-Year Total	6,392	1,826	62	48	69	8,397

Indicates a value < 6

**Residents of Douglas County
Motor Vehicle Crash Hospitalizations, Hospital Charges and Emergency Room Visits and Charges
2003-2007**

	Auto	Truck	Motorcycle	Bicycle	Pedestrian	Total
2003						
Number of Cases			0	0	0	
Total Charges	\$207,051	\$9,280	\$0	\$0	\$0	\$216,331
2004						
Number of Cases			0	0	0	
Total Charges	\$8,750	\$13,485	\$0	\$0	\$0	\$22,235
2005						
Number of Cases		0	0	0	0	
Total Charges	\$19,922	\$0	\$0	\$0	\$0	\$19,922
2006						
Number of Cases		0	0	0	0	
Total Charges	\$3,922	\$0	\$0	\$0	\$0	\$3,922
2007						
Number of Cases				0	0	
Total Charges	\$10,250	\$6,393	\$29,826	\$0	\$0	\$46,469
Five-YearTotal						
Number of Cases	8			0	0	13
Total Charges	\$249,895	\$29,158	\$29,826	\$0	\$0	\$308,879

**Motor Vehicle Crash Emergency Room Visits and Charges
2003-2007**

	Auto	Truck	Motorcycle	Bicycle	Pedestrian	Total
2003						
Number of Cases	124	15			7	148
Total Charges	\$100,644	\$11,700	\$896	\$303	\$4,554	\$118,097
2004						
Number of Cases	89	20	0	9		124
Total Charges	\$75,324	\$15,236	\$0	\$7,296	\$11,627	\$109,483
2005						
Number of Cases	91	14				122
Total Charges	\$78,564	\$18,836	\$11,167	\$5,333	\$2,233	\$116,133
2006						
Number of Cases	84	17	0		8	115
Total Charges	\$89,643	\$16,009	\$0	\$9,065	\$6,932	\$121,649
2007						
Number of Cases	83	19				114
Total Charges	\$95,677	\$26,253	\$3,471	\$3,011		\$128,416
Five -Year Total						
Number of Cases	471	85	11	26	30	509
Total Charges	\$439,852	\$88,034	\$15,534	\$25,008	\$25,350	\$465,362

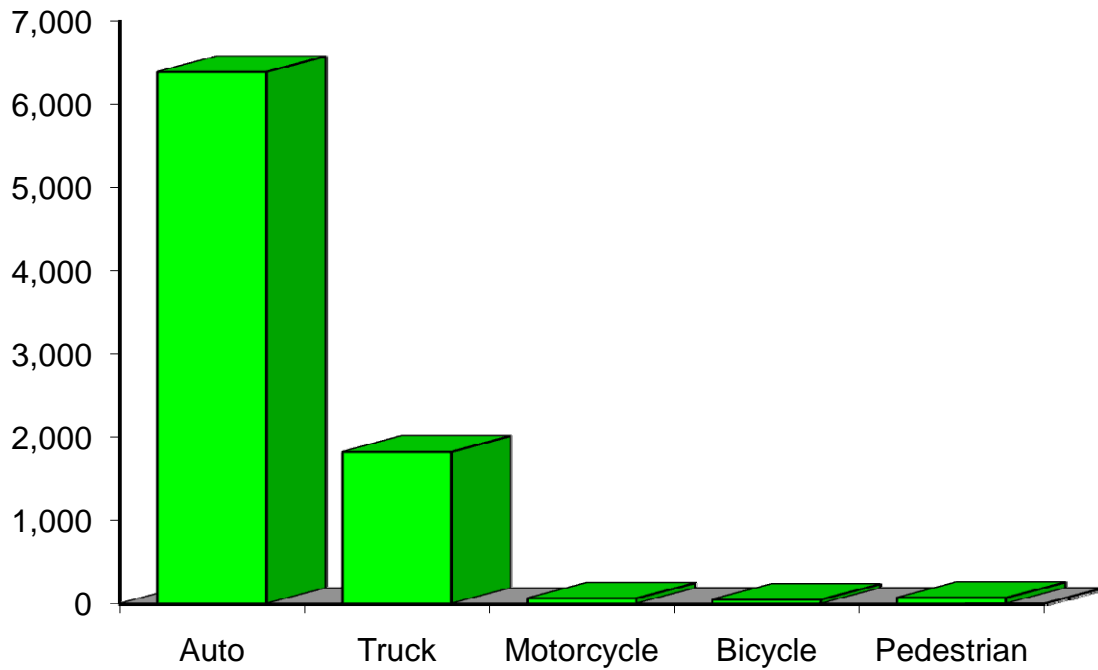
Indicates a value < 6

**Residents of Douglas County
Motor Vehicle Crash Deaths
2003-2007**

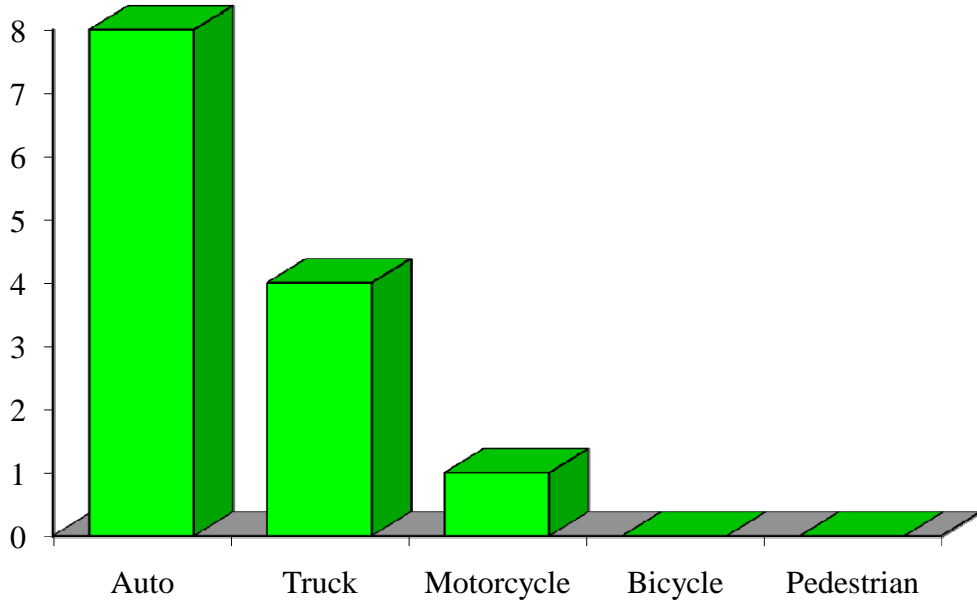
	Auto	Truck	Motorcycle	Bicycle	Pedestrian	Total
2003			0	0	0	
2004		0	0	0	0	
2005			0	0	0	7
2006				0	0	
2007				0	0	
Five-Year Total	14	7		0	0	23

Indicates a value < 6

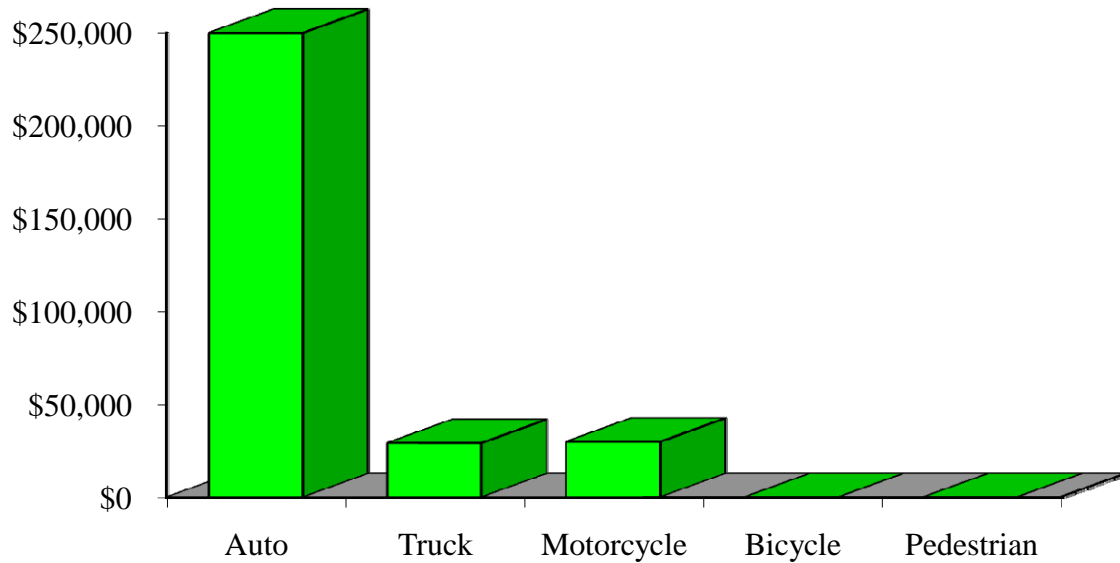
Crash Occupants by Vehicle Type Residents of Douglas County, 2003-2007



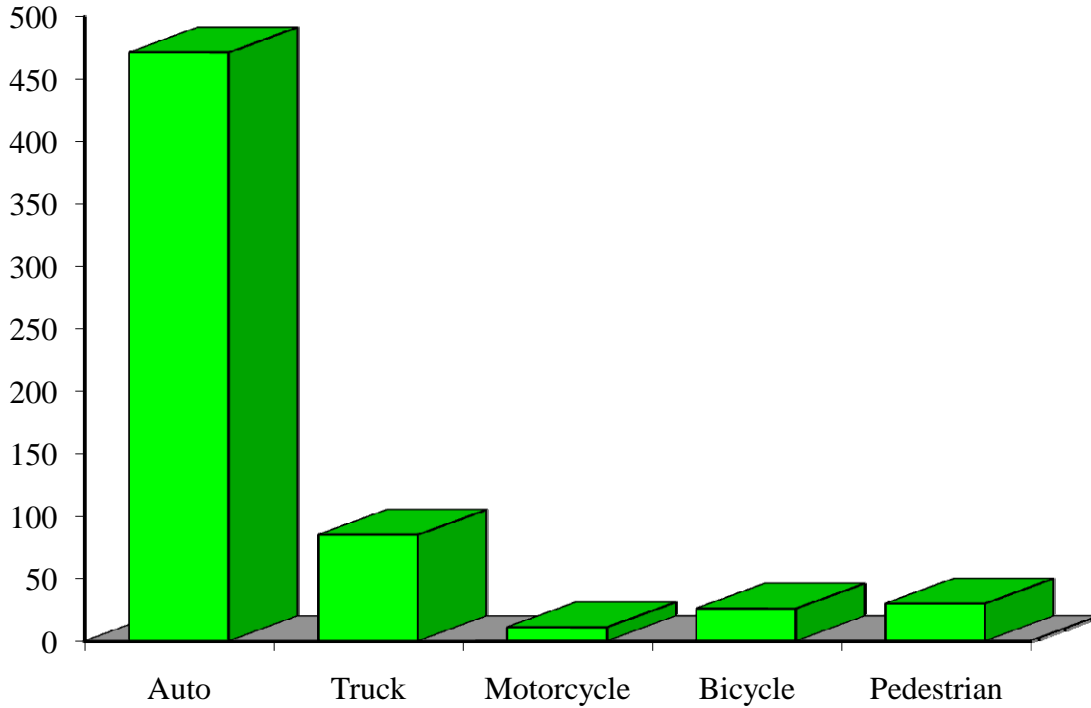
Hospitalizations by Vehicle Type Residents of Douglas County, 2003-2007



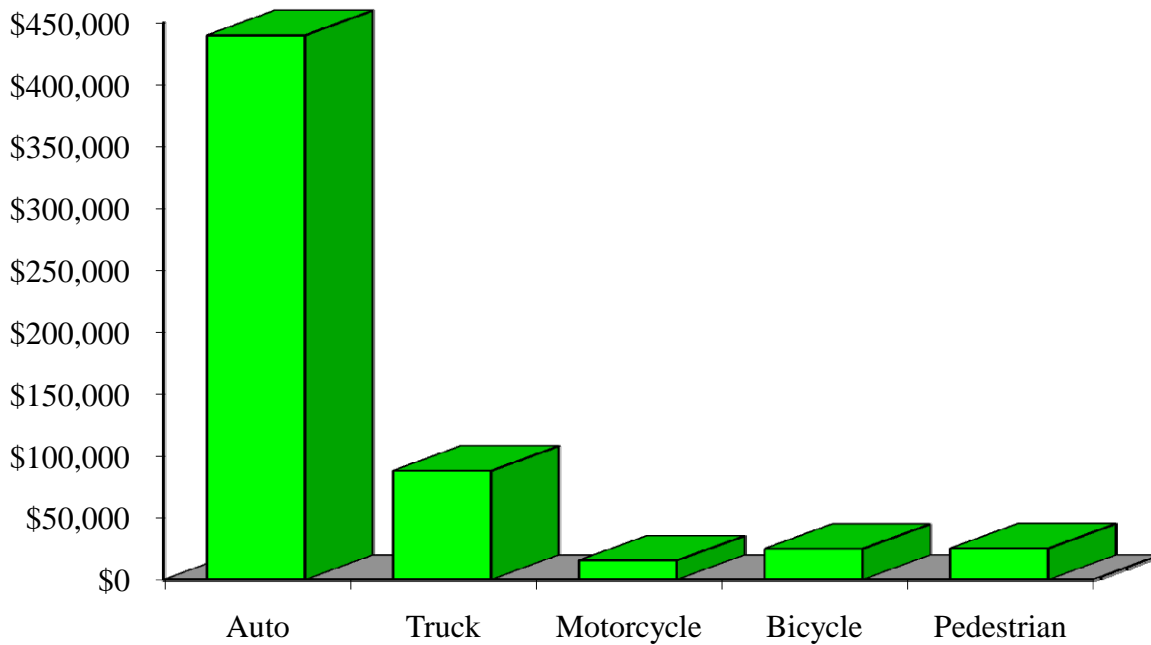
Hospital Charges by Vehicle Type Residents of Douglas County, 2003-2007



Emergency Room Visits by Vehicle Type Residents of Douglas County, 2003-2007



Emergency Room Charges by Vehicle Type Residents of Douglas County, 2003-2007



Residents of Douglas County and All Wisconsin 'Crash Occupants'

Crash Involvement Rates and Costs

2003-2007

	2003	2004	2005	2006	2007	Average
--	-------------	-------------	-------------	-------------	-------------	----------------

Annual Crash Involvement

<i>Douglas County</i>						
Crash Occupants	1,827	1,813	1,689	1,546	1,522	1,679
<i>Rate per 1,000 Residents</i>	41.2	40.9	38.1	34.9	34.3	37.9

State of Wisconsin

Crash Occupants	316,298	307,373	305,007	286,608	300,270	303,111
<i>Rate per 1,000 Residents</i>	57.0	55.4	55.0	51.6	54.1	54.6

Annual Crash-Related Hospitalizations

<i>Douglas County</i>						
Crash-Related Hospitalizations						
<i>Rate per 100,000 Residents*</i>		6.8	6.8		9.0	

State of Wisconsin

Crash-Related Hospitalizations	4,234	3,983	4,232	4,253	4,146	4,170
<i>Rate per 100,000 Residents*</i>	76.3	71.8	76.3	76.6	74.7	75.1

Annual Crash-Related Hospital Charges

<i>Douglas County</i>						
Total Crash Injury Hospital Charges	\$216,331	\$22,235	\$19,922	\$3,922	\$46,469	\$61,776
<i>Annual Charge per 1,000 Residents</i>	\$4,877	\$501	\$449	\$88	\$1,048	\$1,393

State of Wisconsin

Total Crash Injury Hospital Charges	\$126,881,405	\$133,270,653	\$151,898,242	\$162,208,759	\$181,072,379	\$151,066,288
<i>Annual Charge per 1,000 Residents</i>	\$22,861	\$24,012	\$27,368	\$29,226	\$32,625	\$27,219

Annual Crash-Related Emergency Room Visits

<i>Douglas County</i>						
Crash-Related Emergency Room Visits	148	124	122	115	114	119
<i>Rate per 100,000 Residents*</i>	333.6	279.5	275.0	259.3	257.0	267.7

State of Wisconsin

Crash-Related Emergency Room Visits	31,664	31,866	33,269	31,268	30,615	\$31,755
<i>Rate per 100,000 Residents*</i>	570.5	574.1	599.4	563.4	551.6	572.1

Annual Crash-Related Emergency Room Charges

<i>Douglas County</i>						
Total Crash Injury Emergency Room Charges	\$118,097	\$109,483	\$116,133	\$121,649	\$128,416	\$118,920
<i>Annual ER Charge per 1,000 Residents</i>	\$2,662	\$2,468	\$2,618	\$2,742	\$2,895	\$2,681

State of Wisconsin

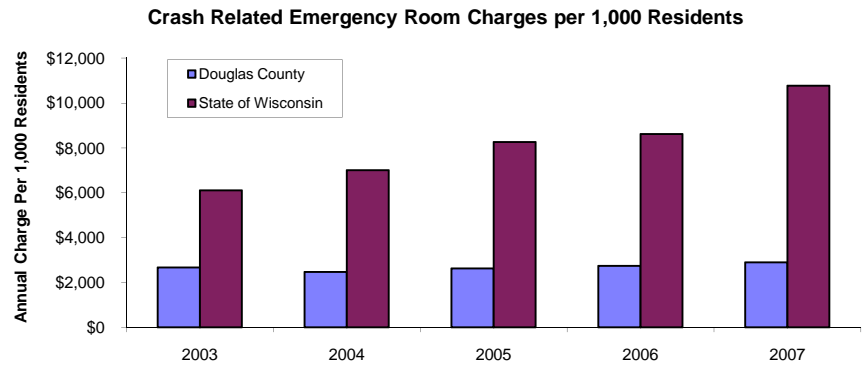
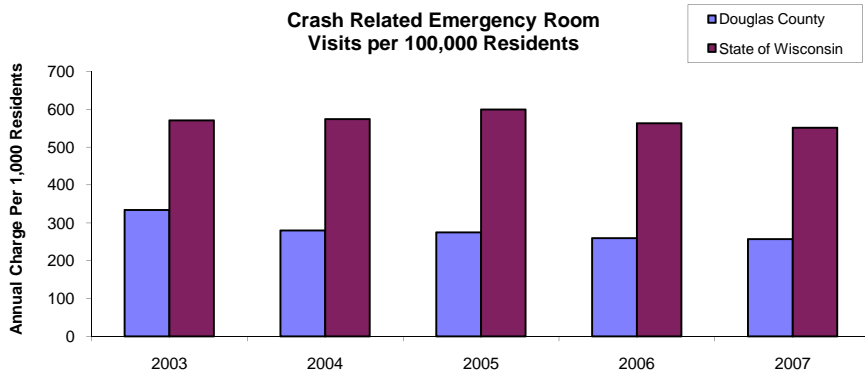
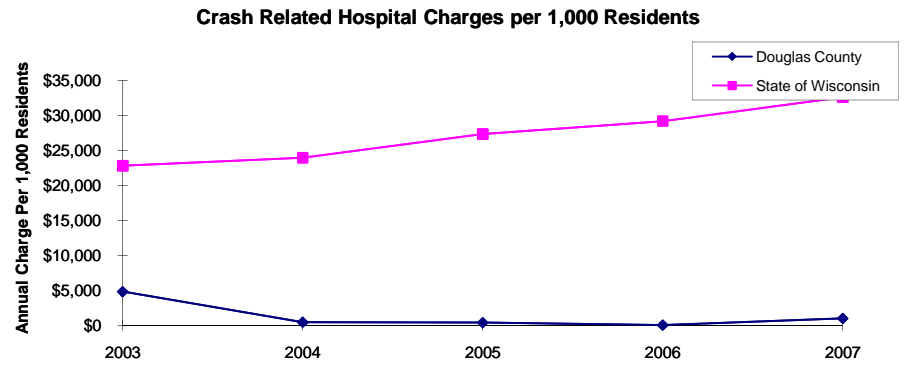
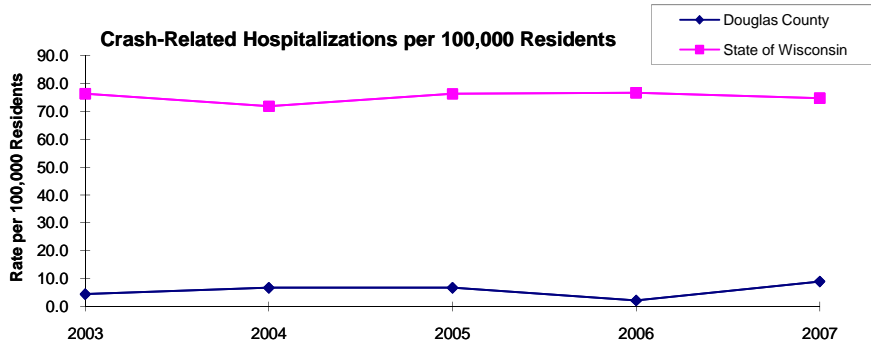
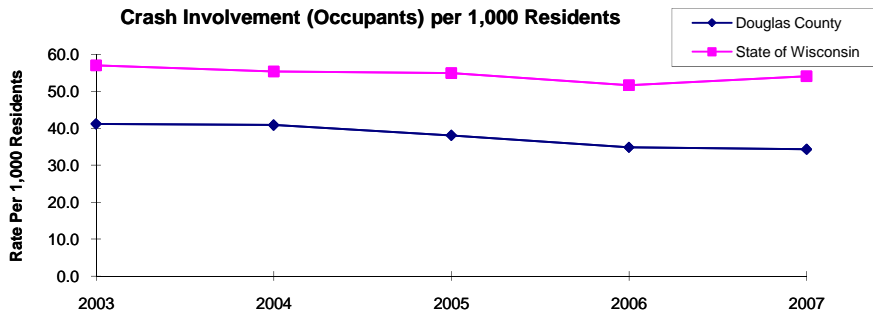
Crash Injury Emergency Room Charges	\$33,900,299	\$38,900,194	\$45,882,386	\$47,860,521	\$59,808,628	\$48,112,932
<i>Annual ER Charge per 1,000 Residents</i>	6,108	\$7,009	\$8,267	\$8,623	\$10,776	\$8,669

Average Annual Population (computed 2003-2007 population estimates)

<i>Douglas County</i>	44,358	* Reported as a rate per 100,000 residents to better highlight
<i>State of Wisconsin</i>	5,550,118	variations: 1.12 per 1,000 = 112 per 100,000.

Population data estimates are available at the Demographic Services Center, Wisconsin Department of Administration

Residents of Douglas County



Zipcodes included in County of Resident Reports

Residents of Douglas County

54820	54836
54838	54842
54849	54854
54864	54873
54874	54880
54890	