
Residents of Dunn County

Motor Vehicle Crash Occupants, Hospitalizations, Emergency Room Visits and Fatalities 2003-2007

	Auto	Truck	Motorcycle	Bicycle	Pedestrian	Total
Crash Occupants	7,021	2,102	98	33	39	9,293
Hospitalized Cases	68	22	19			117
Hospital Charges	\$2,176,705	\$446,348	\$632,616	\$23,404	\$148,486	\$3,427,559
Emergency Room Visits	666	141	35	13	17	731
Emergency Room Charges	\$729,936	\$173,467	\$44,802	\$23,632	\$7,304	\$767,720
Deaths	30	7	1	1	2	41

Indicates a value < 6

**Residents of Dunn County
Hospitalization Charges by Vehicle Type
2003-2007**

	Auto	Truck	Motorcycle	Bicycle	Pedestrian
Hospital Charges	\$2,176,705	\$446,348	\$632,616	\$23,404	\$148,486
Total Crash Occupants	7,021	2,102	98	33	39
Hospital Charge/Occupant	\$310.03	\$212.34	\$6,455.27	\$709.21	\$3,807.33

**Hospitalization Rates by Vehicle Type
2003-2007**

	Auto	Truck	Motorcycle	Bicycle	Pedestrian
Hospital Cases	68	22	19		6
Total Crash Occupants	7,021	2,102	98	33	39
Hospitalization Rate/Crash Occupant	1.0%	1.0%	19.4%	6.1%	15.4%

**Emergency Room Charges by Vehicle Type
2003-2007**

	Auto	Truck	Motorcycle	Bicycle	Pedestrian
ER Charges	\$729,936	\$173,467	\$44,802	\$23,632	\$7,304
Crash Occupants	7,021	2,102	98	33	39
Emergency Room Charges/Crash Occupant	\$104	\$83	\$457	\$716	\$187

**Emergency Room Visits by Vehicle Type
2003-2007**

	Auto	Truck	Motorcycle	Bicycle	Pedestrian
Emergency Room Visits	666	141	35	13	17
Total Crash Occupants	7,021	2,102	98	33	39
Emergency Room Rate/Crash Occupant	9.5%	6.7%	35.7%	39.4%	43.6%

Indicates a value < 4

**Residents of Dunn County
Occupants of Motor Vehicle Crashes
2003-2007**

	Auto	Truck	Motorcycle	Bicycle	Pedestrian	Total
2003	1,524	501	16		9	2,055
2004	1,503	479	20		10	2,018
2005	1,467	421	19		9	1,921
2006	1,314	345	15	11		1,689
2007	1,213	356	28		7	1,610
Five-Year Total	7,021	2,102	98	33	39	9,293

Indicates a value < 6

**Residents of Dunn County
Motor Vehicle Crash Hospitalizations, Hospital Charges and Emergency Room Visits and Charges
2003-2007**

	Auto	Truck	Motorcycle	Bicycle	Pedestrian	Total
2003						
Number of Cases	15					28
Total Charges	\$283,489	\$103,701	\$209,451	\$9,326	\$12,663	\$618,630
2004						
Number of Cases	10			0	0	17
Total Charges	\$169,585	\$66,913	\$93,249	\$0	\$0	\$329,747
2005						
Number of Cases	19			0		28
Total Charges	\$747,290	\$42,242	\$108,646	\$0	\$100,736	\$998,914
2006						
Number of Cases	15					24
Total Charges	\$547,856	\$137,701	\$61,168	\$14,078	\$35,087	\$795,890
2007						
Number of Cases	9			0	0	20
Total Charges	\$428,485	\$95,791	\$160,102	\$0	\$0	\$684,378
Five-YearTotal						
Number of Cases	68	22	19			117
Total Charges	\$2,176,705	\$446,348	\$632,616	\$23,404	\$148,486	\$3,427,559

**Motor Vehicle Crash Emergency Room Visits and Charges
2003-2007**

	Auto	Truck	Motorcycle	Bicycle	Pedestrian	Total
2003						
Number of Cases	145	32				189
Total Charges	\$130,914	\$18,619	\$3,478	\$1,103	\$1,919	\$156,033
2004						
Number of Cases	147	23		0		181
Total Charges	\$125,310	\$25,201	\$7,752	\$0	\$3,992	\$162,255
2005						
Number of Cases	141	30	8			184
Total Charges	\$142,213	\$54,902	\$16,735	\$15,359	\$1,150	\$230,359
2006						
Number of Cases	138	29	7			177
Total Charges	\$171,898	\$38,113	\$6,207	\$2,615	\$240	\$219,073
2007						
Number of Cases	95	27	11			141
Total Charges	\$159,601	\$36,632	\$10,630	\$4,555		\$211,421
Five -Year Total						
Number of Cases	666	141	35	13	17	731
Total Charges	\$729,936	\$173,467	\$44,802	\$23,632	\$7,304	\$767,720

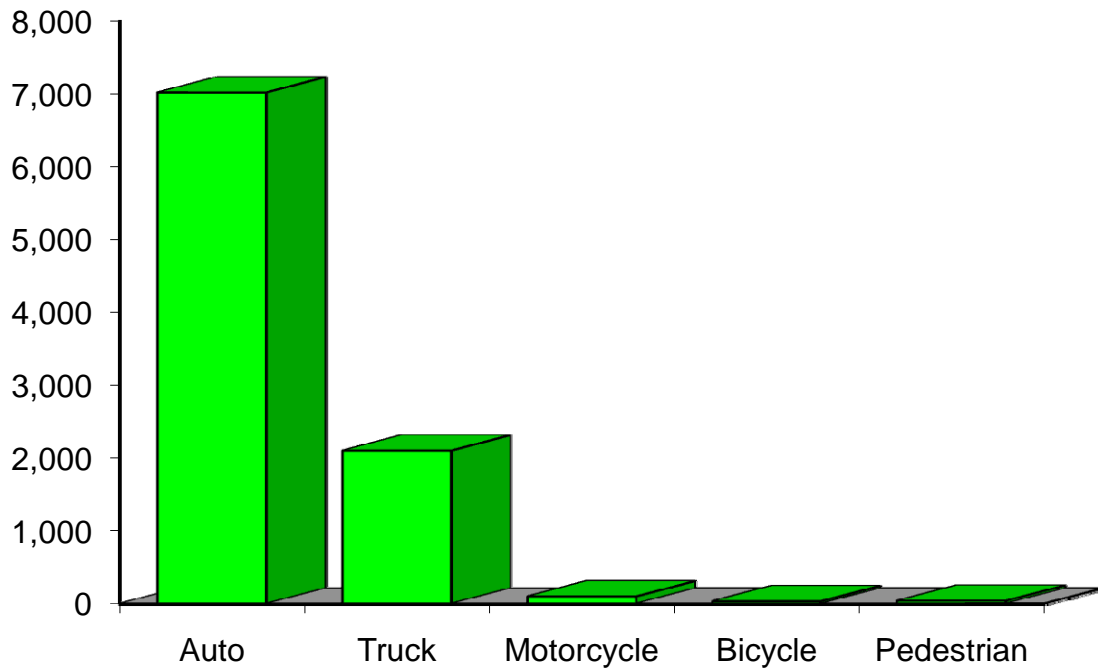
Indicates a value < 6

**Residents of Dunn County
Motor Vehicle Crash Deaths
2003-2007**

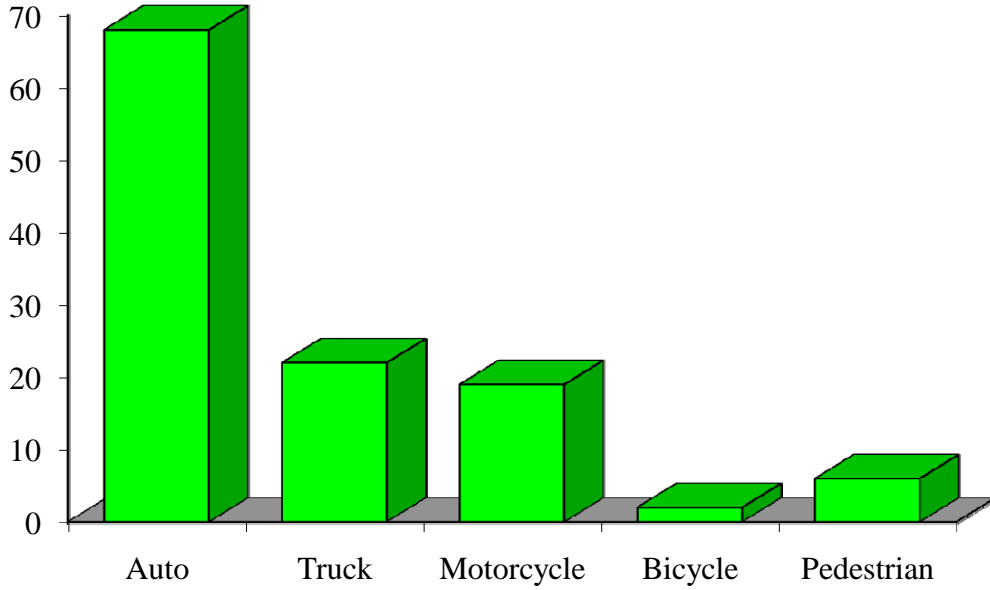
	Auto	Truck	Motorcycle	Bicycle	Pedestrian	Total
2003			0	0		7
2004	9	0		0		11
2005	7		0		0	11
2006			0	0	0	7
2007			0	0	0	
Five-Year Total	30	7				41

Indicates a value < 6

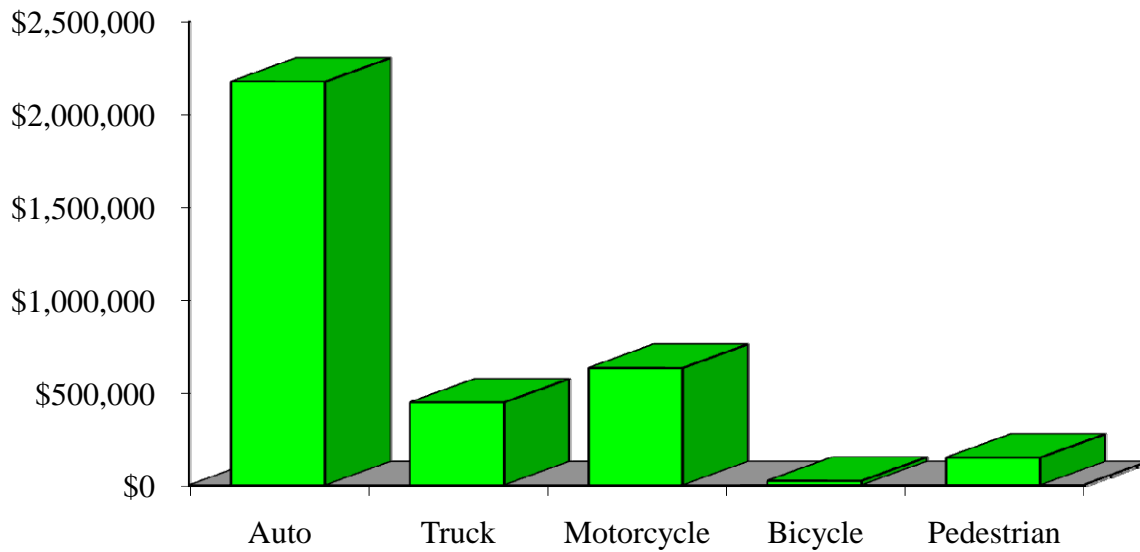
Crash Occupants by Vehicle Type Residents of Dunn County, 2003-2007



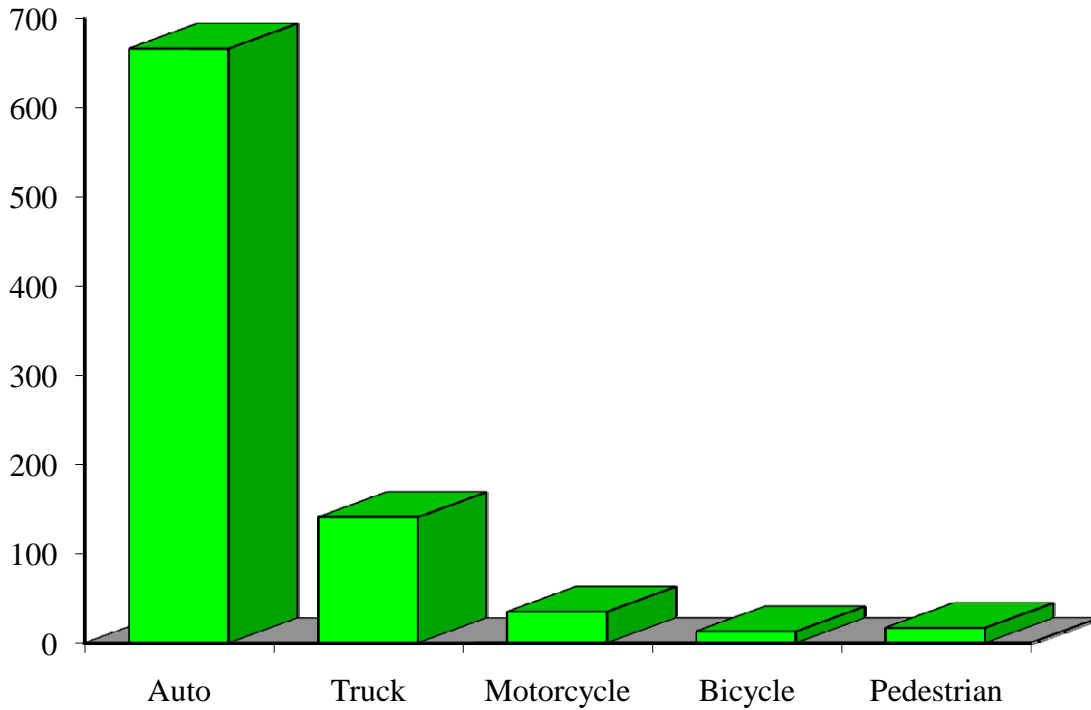
Hospitalizations by Vehicle Type Residents of Dunn County, 2003-2007



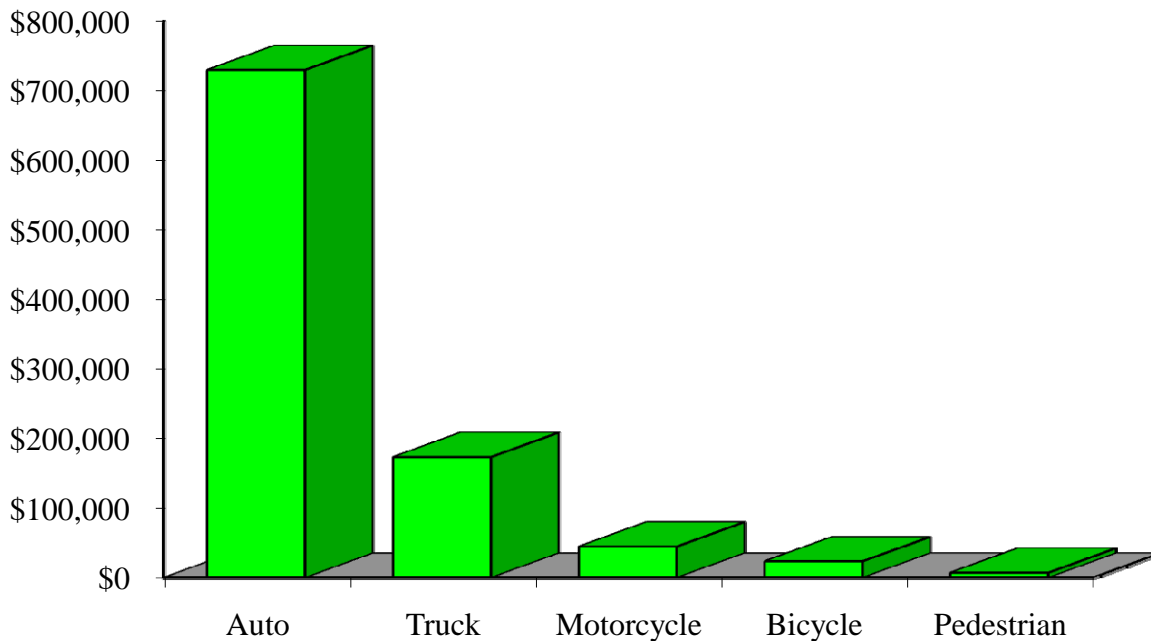
Hospital Charges by Vehicle Type Residents of Dunn County, 2003-2007



Emergency Room Visits by Vehicle Type Residents of Dunn County, 2003-2007



Emergency Room Charges by Vehicle Type Residents of Dunn County, 2003-2007



Residents of Dunn County and All Wisconsin 'Crash Occupants'

Crash Involvement Rates and Costs

2003-2007

	2003	2004	2005	2006	2007	Average
--	-------------	-------------	-------------	-------------	-------------	----------------

Annual Crash Involvement

<i>Dunn County</i>						
Crash Occupants	2,055	2,018	1,921	1,689	1,610	1,859
<i>Rate per 1,000 Residents</i>	49.3	48.4	46.1	40.5	38.6	44.6

<i>State of Wisconsin</i>						
Crash Occupants	316,298	307,373	305,007	286,608	300,270	303,111
<i>Rate per 1,000 Residents</i>	57.0	55.4	55.0	51.6	54.1	54.6

Annual Crash-Related Hospitalizations

<i>Dunn County</i>						
Crash-Related Hospitalizations	28	17	28	24	20	23
<i>Rate per 100,000 Residents*</i>	67.1	40.8	67.1	57.6	48.0	56.1

<i>State of Wisconsin</i>						
Crash-Related Hospitalizations	4,234	3,983	4,232	4,253	4,146	4,170
<i>Rate per 100,000 Residents*</i>	76.3	71.8	76.3	76.6	74.7	75.1

Annual Crash-Related Hospital Charges

<i>Dunn County</i>						
Total Crash Injury Hospital Charges	\$618,630	\$329,747	\$998,914	\$795,890	\$684,378	\$685,512
<i>Annual Charge per 1,000 Residents</i>	\$14,836	\$7,908	\$23,955	\$19,086	\$16,412	\$16,439

<i>State of Wisconsin</i>						
Total Crash Injury Hospital Charges	\$126,881,405	\$133,270,653	\$151,898,242	\$162,208,759	\$181,072,379	\$151,066,288
<i>Annual Charge per 1,000 Residents</i>	\$22,861	\$24,012	\$27,368	\$29,226	\$32,625	\$27,219

Annual Crash-Related Emergency Room Visits

<i>Dunn County</i>						
Crash-Related Emergency Room Visits	189	181	184	177	141	171
<i>Rate per 100,000 Residents*</i>	453.2	434.1	441.3	424.5	338.1	409.5

<i>State of Wisconsin</i>						
Crash-Related Emergency Room Visits	31,664	31,866	33,269	31,268	30,615	\$31,755
<i>Rate per 100,000 Residents*</i>	570.5	574.1	599.4	563.4	551.6	572.1

Annual Crash-Related Emergency Room Charges

<i>Dunn County</i>						
Total Crash Injury Emergency Room Charges	\$156,033	\$162,255	\$230,359	\$219,073	\$211,421	\$205,777
<i>Annual ER Charge per 1,000 Residents</i>	\$3,742	\$3,891	\$5,524	\$5,254	\$5,070	\$4,935

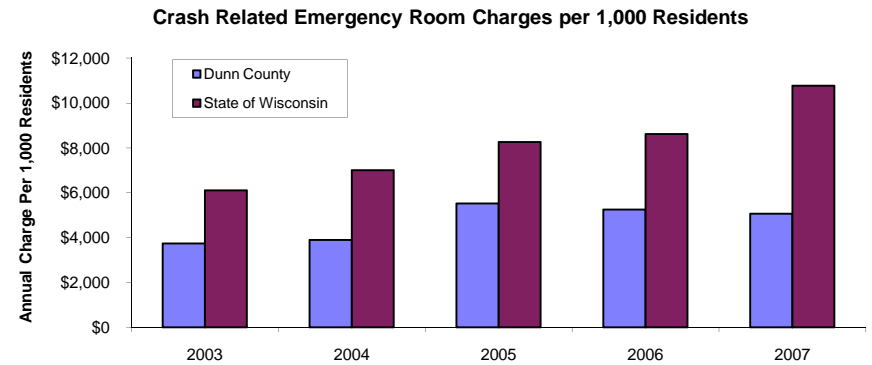
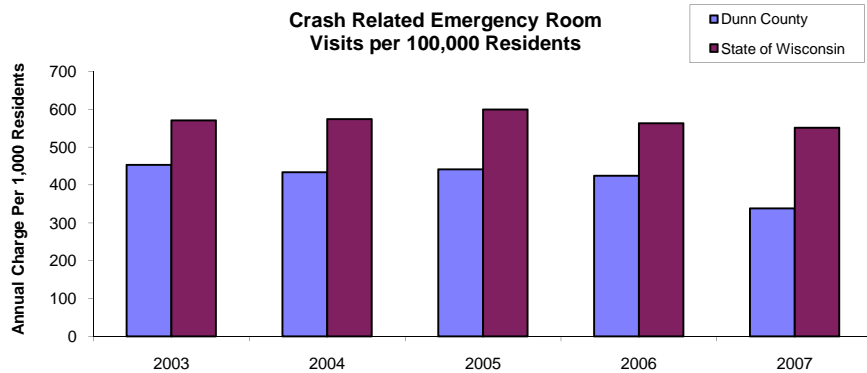
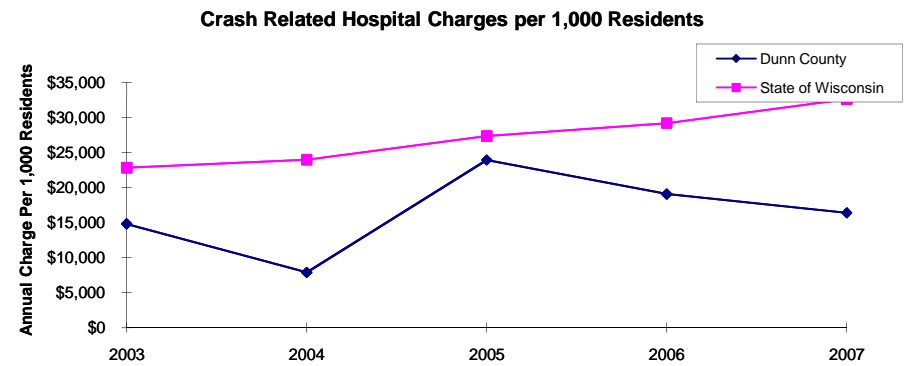
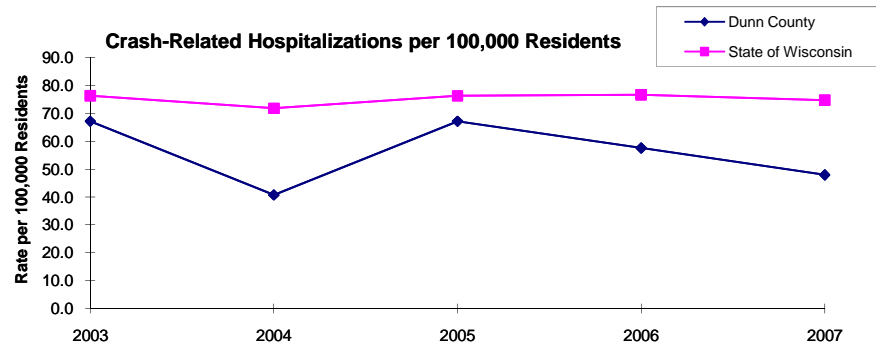
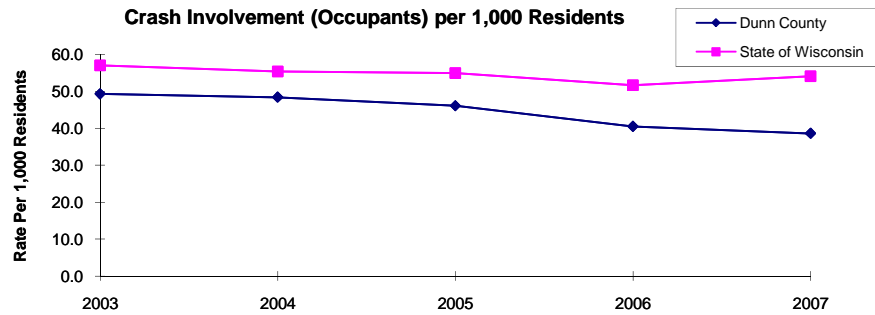
<i>State of Wisconsin</i>						
Crash Injury Emergency Room Charges	\$33,900,299	\$38,900,194	\$45,882,386	\$47,860,521	\$59,808,628	\$48,112,932
<i>Annual ER Charge per 1,000 Residents</i>	6,108	\$7,009	\$8,267	\$8,623	\$10,776	\$8,669

Average Annual Population (computed 2003-2007 population estimates)

<i>Dunn County</i>	41,699	* Reported as a rate per 100,000 residents to better highlight
<i>State of Wisconsin</i>	5,550,118	variations: 1.12 per 1,000 = 112 per 100,000.

Population data estimates are available at the Demographic Services Center, Wisconsin Department of Administration

Residents of Dunn County



Zipcodes included in County of Resident Reports

Residents of Dunn County

54725	54730
54734	54735
54737	54739
54749	54751
54763	54764
54765	54772