
Residents of Juneau County

Motor Vehicle Crash Occupants, Hospitalizations, Emergency Room Visits and Fatalities 2003-2007

	Auto	Truck	Motorcycle	Bicycle	Pedestrian	Total
Crash Occupants	4,535	1,821	85	18	42	6,501
Hospitalized Cases	104	32	29		9	180
Hospital Charges	\$3,939,254	\$1,412,735	\$1,007,681	\$139,963	\$199,425	\$6,699,058
Emergency Room Visits	600	195	40	12	19	681
Emergency Room Charges	\$822,813	\$309,738	\$102,560	\$11,875	\$33,775	\$921,344
Deaths	9	6	3	1	3	22

Indicates a value < 6

**Residents of Juneau County
Hospitalization Charges by Vehicle Type
2003-2007**

	Auto	Truck	Motorcycle	Bicycle	Pedestrian
Hospital Charges	\$3,939,254	\$1,412,735	\$1,007,681	\$139,963	\$199,425
Total Crash Occupants	4,535	1,821	85	18	42
Hospital Charge/Occupant	\$868.63	\$775.80	\$11,855.07	\$7,775.72	\$4,748.21

**Hospitalization Rates by Vehicle Type
2003-2007**

	Auto	Truck	Motorcycle	Bicycle	Pedestrian
Hospital Cases	104	32	29	6	9
Total Crash Occupants	4,535	1,821	85	18	42
Hospitalization Rate/Crash Occupant	2.3%	1.8%	34.1%	33.3%	21.4%

**Emergency Room Charges by Vehicle Type
2003-2007**

	Auto	Truck	Motorcycle	Bicycle	Pedestrian
ER Charges	\$822,813	\$309,738	\$102,560	\$11,875	\$33,775
Crash Occupants	4,535	1,821	85	18	42
Emergency Room Charges/Crash Occupant	\$181	\$170	\$1,207	\$660	\$804

**Emergency Room Visits by Vehicle Type
2003-2007**

	Auto	Truck	Motorcycle	Bicycle	Pedestrian
Emergency Room Visits	600	195	40	12	19
Total Crash Occupants	4,535	1,821	85	18	42
Emergency Room Rate/Crash Occupant	13.2%	10.7%	47.1%	66.7%	45.2%

Indicates a value < 4

**Residents of Juneau County
Occupants of Motor Vehicle Crashes
2003-2007**

	Auto	Truck	Motorcycle	Bicycle	Pedestrian	Total
2003	922	373	22		7	1,326
2004	851	371	12	7	8	1,249
2005	989	358	15		9	1,372
2006	857	326	12		14	1,212
2007	916	393	24			1,342
Five-Year Total	4,535	1,821	85	18	42	6,501

Indicates a value < 6

**Residents of Juneau County
Motor Vehicle Crash Hospitalizations, Hospital Charges and Emergency Room Visits and Charges
2003-2007**

	Auto	Truck	Motorcycle	Bicycle	Pedestrian	Total
2003						
Number of Cases	15					30
Total Charges	\$388,564	\$210,790	\$104,691	\$15,816	\$38,190	\$758,051
2004						
Number of Cases	23	9			0	40
Total Charges	\$959,844	\$305,959	\$422,036	\$74,680	\$0	\$1,762,519
2005						
Number of Cases	30			0		43
Total Charges	\$769,773	\$150,911	\$177,285	\$0	\$105,962	\$1,203,931
2006						
Number of Cases	14					25
Total Charges	\$765,826	\$115,416	\$68,240	\$31,218	\$55,273	\$1,035,973
2007						
Number of Cases	22	9	9		0	42
Total Charges	\$1,055,247	\$629,659	\$235,429	\$18,249	\$0	\$1,938,584
Five-YearTotal						
Number of Cases	104	32	29		9	180
Total Charges	\$3,939,254	\$1,412,735	\$1,007,681	\$139,963	\$199,425	\$6,699,058

**Motor Vehicle Crash Emergency Room Visits and Charges
2003-2007**

	Auto	Truck	Motorcycle	Bicycle	Pedestrian	Total
2003						
Number of Cases	127	37	10			179
Total Charges	\$147,419	\$39,257	\$21,222	\$661	\$3,539	\$212,098
2004						
Number of Cases	126	36	7			177
Total Charges	\$153,807	\$37,343	\$26,032	\$2,200	\$4,697	\$224,079
2005						
Number of Cases	123	33	7			166
Total Charges	\$162,568	\$44,009	\$18,777	\$977	\$8,105	\$234,436
2006						
Number of Cases	105	41			7	159
Total Charges	\$154,759	\$61,606	\$15,804	\$1,130	\$17,432	\$250,731
2007						
Number of Cases	119	48	11			185
Total Charges	\$204,260	\$127,523	\$20,725	\$6,907		\$359,417
Five -Year Total						
Number of Cases	600	195	40	12	19	681
Total Charges	\$822,813	\$309,738	\$102,560	\$11,875	\$33,775	\$921,344

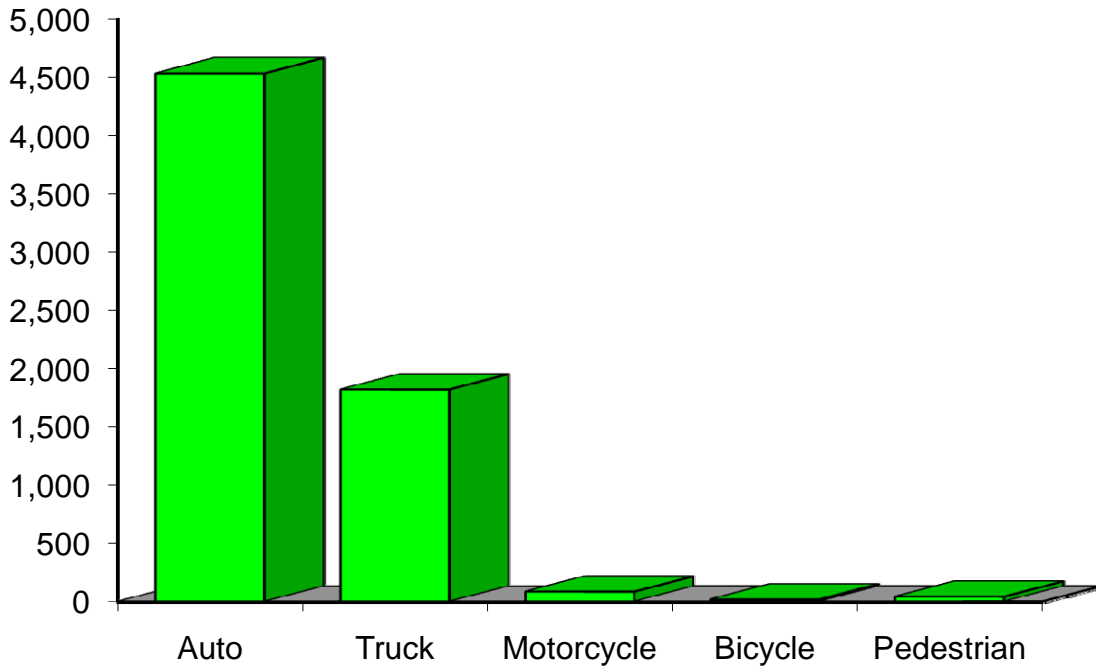
Indicates a value < 6

**Residents of Juneau County
Motor Vehicle Crash Deaths
2003-2007**

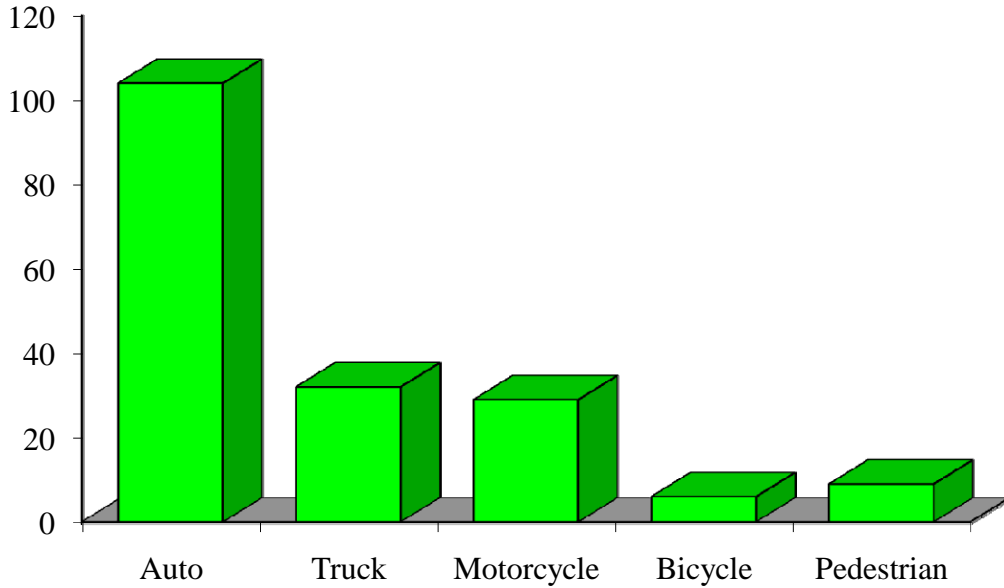
	Auto	Truck	Motorcycle	Bicycle	Pedestrian	Total
2003				0		8
2004					0	
2005			0	0		
2006	0		0	0	0	
2007				0	0	
Five-Year Total	9					22

Indicates a value < 6

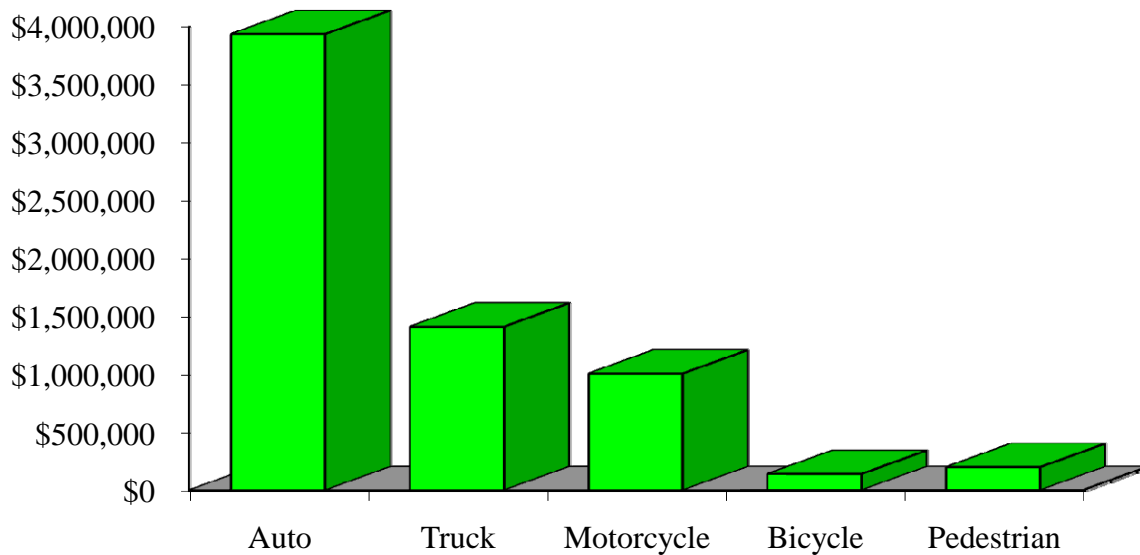
Crash Occupants by Vehicle Type Residents of Juneau County, 2003-2007



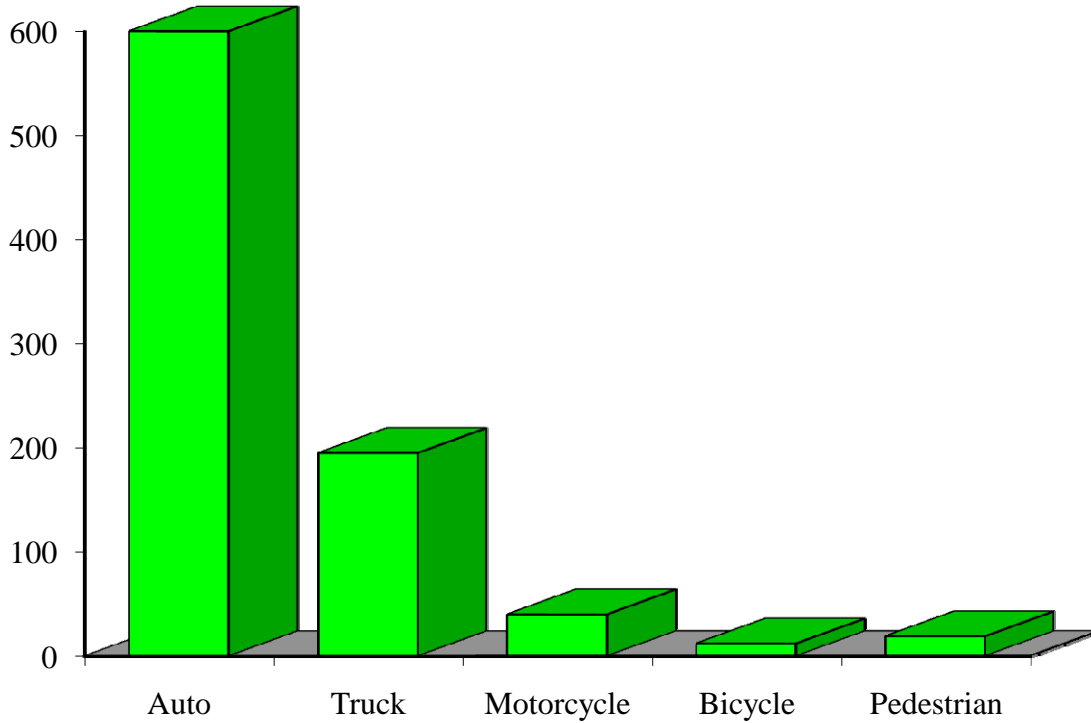
Hospitalizations by Vehicle Type Residents of Juneau County, 2003-2007



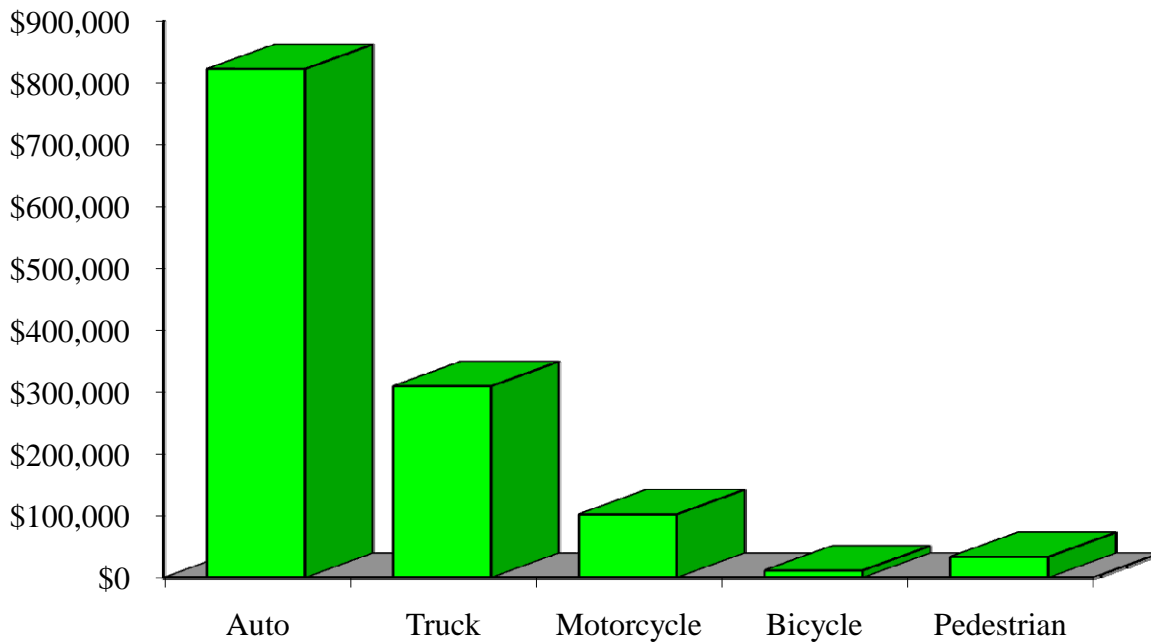
Hospital Charges by Vehicle Type Residents of Juneau County, 2003-2007



Emergency Room Visits by Vehicle Type Residents of Juneau County, 2003-2007



Emergency Room Charges by Vehicle Type Residents of Juneau County, 2003-2007



Residents of Juneau County and All Wisconsin 'Crash Occupants'

Crash Involvement Rates and Costs

2003-2007

	2003	2004	2005	2006	2007	Average
--	------	------	------	------	------	---------

Annual Crash Involvement

<i>Juneau County</i>						
Crash Occupants	1,326	1,249	1,372	1,212	1,342	1,300
<i>Rate per 1,000 Residents</i>	48.8	46.0	50.5	44.6	49.4	47.9

State of Wisconsin

Crash Occupants	316,298	307,373	305,007	286,608	300,270	303,111
<i>Rate per 1,000 Residents</i>	57.0	55.4	55.0	51.6	54.1	54.6

Annual Crash-Related Hospitalizations

<i>Juneau County</i>						
Crash-Related Hospitalizations	30	40	43	25	42	36
<i>Rate per 100,000 Residents*</i>	110.4	147.2	158.3	92.0	154.6	132.5

State of Wisconsin

Crash-Related Hospitalizations	4,234	3,983	4,232	4,253	4,146	4,170
<i>Rate per 100,000 Residents*</i>	76.3	71.8	76.3	76.6	74.7	75.1

Annual Crash-Related Hospital Charges

<i>Juneau County</i>						
Total Crash Injury Hospital Charges	\$758,051	\$1,762,519	\$1,203,931	\$1,035,973	\$1,938,584	\$1,339,812
<i>Annual Charge per 1,000 Residents</i>	\$27,899	\$64,868	\$44,309	\$38,128	\$71,348	\$49,310

State of Wisconsin

Total Crash Injury Hospital Charges	\$126,881,405	\$133,270,653	\$151,898,242	\$162,208,759	\$181,072,379	\$151,066,288
<i>Annual Charge per 1,000 Residents</i>	\$22,861	\$24,012	\$27,368	\$29,226	\$32,625	\$27,219

Annual Crash-Related Emergency Room Visits

<i>Juneau County</i>						
Crash-Related Emergency Room Visits	179	177	166	159	185	172
<i>Rate per 100,000 Residents*</i>	658.8	651.4	610.9	585.2	680.9	632.1

State of Wisconsin

Crash-Related Emergency Room Visits	31,664	31,866	33,269	31,268	30,615	\$31,755
<i>Rate per 100,000 Residents*</i>	570.5	574.1	599.4	563.4	551.6	572.1

Annual Crash-Related Emergency Room Charges

<i>Juneau County</i>						
Total Crash Injury Emergency Room Charges	\$212,098	\$224,079	\$234,436	\$250,731	\$359,417	\$267,166
<i>Annual ER Charge per 1,000 Residents</i>	\$7,806	\$8,247	\$8,628	\$9,228	\$13,228	\$9,833

State of Wisconsin

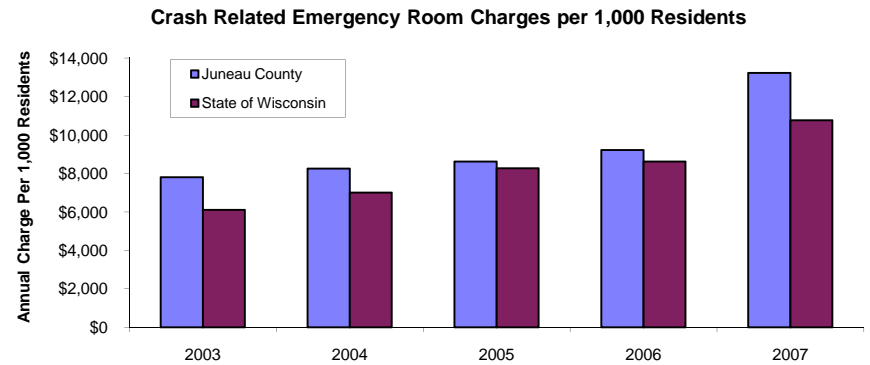
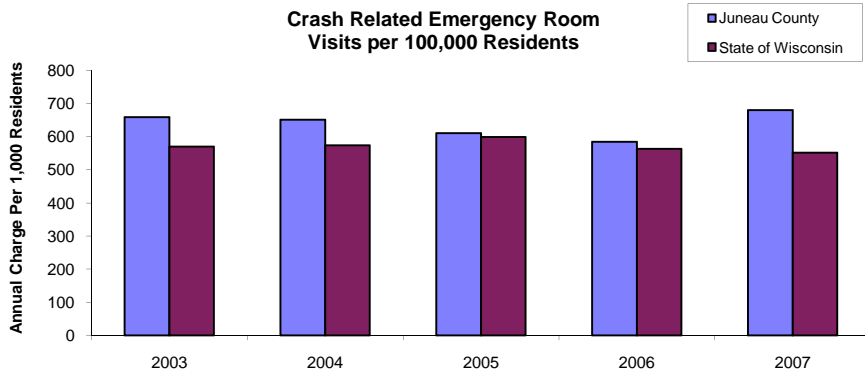
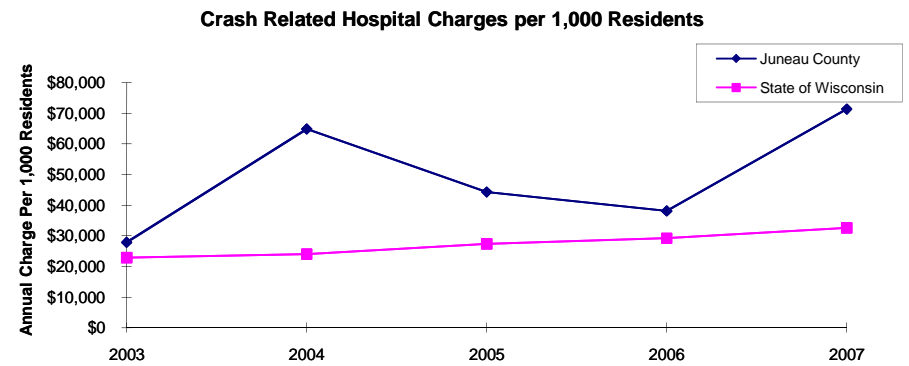
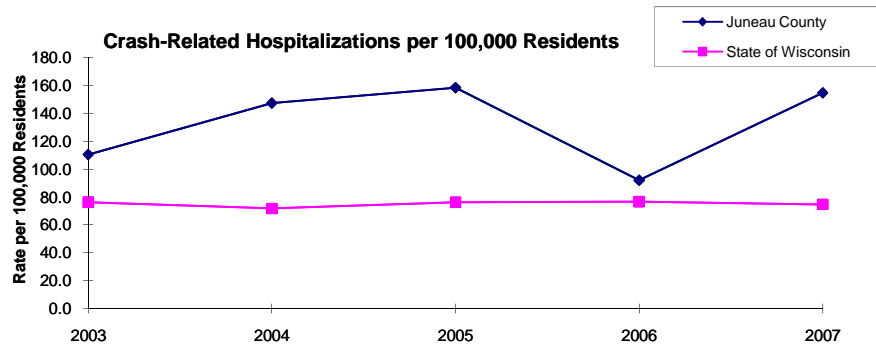
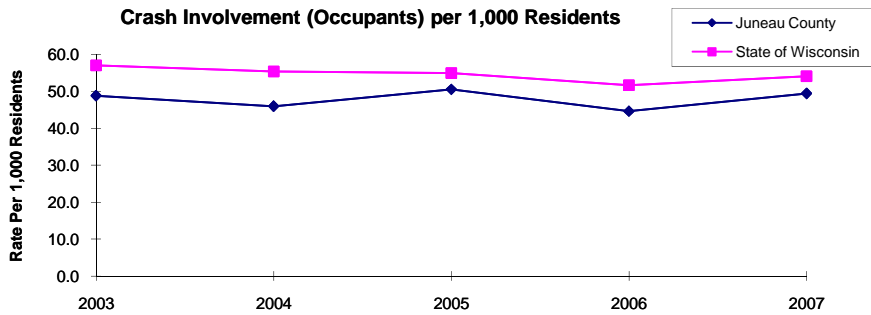
Crash Injury Emergency Room Charges	\$33,900,299	\$38,900,194	\$45,882,386	\$47,860,521	\$59,808,628	\$48,112,932
<i>Annual ER Charge per 1,000 Residents</i>	6,108	\$7,009	\$8,267	\$8,623	\$10,776	\$8,669

Average Annual Population (computed 2003-2007 population estimates)

<i>Juneau County</i>	27,171	* Reported as a rate per 100,000 residents to better highlight
<i>State of Wisconsin</i>	5,550,118	variations: 1.12 per 1,000 = 112 per 100,000.

Population data estimates are available at the Demographic Services Center, Wisconsin Department of Administration

Residents of Juneau County



Zipcodes included in County of Resident Reports

Residents of Juneau County

53929	53944
53948	53950
53962	53968
54618	54637
54641	54646