
Residents of Price County

Motor Vehicle Crash Occupants, Hospitalizations, Emergency Room Visits and Fatalities 2003-2007

	Auto	Truck	Motorcycle	Bicycle	Pedestrian	Total
Crash Occupants	1,683	670	27		7	2,391
Hospitalized Cases	39	10	7	0		57
Hospital Charges	\$1,400,385	\$179,958	\$347,486	\$0	\$3,485	\$1,931,314
Emergency Room Visits	215	74	15			253
Emergency Room Charges	\$283,312	\$110,106	\$30,672	\$1,035	\$2,346	\$323,419
Deaths	14	2	1	0	1	18

Indicates a value < 6

**Residents of Price County
Hospitalization Charges by Vehicle Type
2003-2007**

	Auto	Truck	Motorcycle	Bicycle	Pedestrian
Hospital Charges	\$1,400,385	\$179,958	\$347,486	\$0	\$3,485
Total Crash Occupants	1,683	670	27		7
Hospital Charge/Occupant	\$832.08	\$268.59	\$12,869.85	\$0.00	\$497.86

**Hospitalization Rates by Vehicle Type
2003-2007**

	Auto	Truck	Motorcycle	Bicycle	Pedestrian
Hospital Cases	39	10	7	0	
Total Crash Occupants	1,683	670	27		7
Hospitalization Rate/Crash Occupant	2.3%	1.5%	25.9%	0.0%	14.3%

**Emergency Room Charges by Vehicle Type
2003-2007**

	Auto	Truck	Motorcycle	Bicycle	Pedestrian
ER Charges	\$283,312	\$110,106	\$30,672	\$1,035	\$2,346
Crash Occupants	1,683	670	27		7
Emergency Room Charges/Crash Occupant	\$168	\$164	\$1,136	\$259	\$335

**Emergency Room Visits by Vehicle Type
2003-2007**

	Auto	Truck	Motorcycle	Bicycle	Pedestrian
Emergency Room Visits	215	74	15		6
Total Crash Occupants	1,683	670	27		7
Emergency Room Rate/Crash Occupant	12.8%	11.0%	55.6%	50.0%	85.7%

Indicates a value < 4

**Residents of Price County
Occupants of Motor Vehicle Crashes
2003-2007**

	Auto	Truck	Motorcycle	Bicycle	Pedestrian	Total
2003	385	158				550
2004	399	148				555
2005	297	123		0		427
2006	309	123		0		437
2007	293	118	8			422
Five-Year Total	1,683	670	27		7	2,391

Indicates a value < 6

Residents of Price County
Motor Vehicle Crash Hospitalizations, Hospital Charges and Emergency Room Visits and Charges
2003-2007

	Auto	Truck	Motorcycle	Bicycle	Pedestrian	Total
2003						
Number of Cases	10			0	0	16
Total Charges	\$527,296	\$39,488	\$3,700	\$0	\$0	\$570,484
2004						
Number of Cases				0	0	10
Total Charges	\$79,554	\$77,104	\$4,243	\$0	\$0	\$160,901
2005						
Number of Cases	9	0		0	0	11
Total Charges	\$447,415	\$0	\$48,058	0	\$0	\$495,473
2006						
Number of Cases				0	0	9
Total Charges	\$124,523	\$10,326	\$120,049	0	\$0	\$254,898
2007						
Number of Cases	8			0		11
Total Charges	\$221,597	\$53,040	\$171,436	\$0	\$3,485	\$449,558
Five-YearTotal						
Number of Cases	39	10	7	0		57
Total Charges	\$1,400,385	\$179,958	\$347,486	\$0	\$3,485	\$1,931,314

Motor Vehicle Crash Emergency Room Visits and Charges
2003-2007

	Auto	Truck	Motorcycle	Bicycle	Pedestrian	Total
2003						
Number of Cases	37	15		0		57
Total Charges	\$46,521	\$14,987	\$6,241	\$0	\$89	\$67,838
2004						
Number of Cases	65	16				88
Total Charges	\$59,027	\$27,700	\$5,542	\$1,035	\$1,404	\$94,708
2005						
Number of Cases	31	13		0	0	46
Total Charges	\$51,657	\$26,387	\$3,985	0	\$0	\$82,029
2006						
Number of Cases	45	15		0		62
Total Charges	\$59,719	\$16,808	\$1,466	0	\$851	\$78,844
2007						
Number of Cases	37	15		0		59
Total Charges	\$66,388	\$24,224	\$13,438	\$0		\$104,052
Five -Year Total						
Number of Cases	215	74	15			253
Total Charges	\$283,312	\$110,106	\$30,672	\$1,035	\$2,346	\$323,419

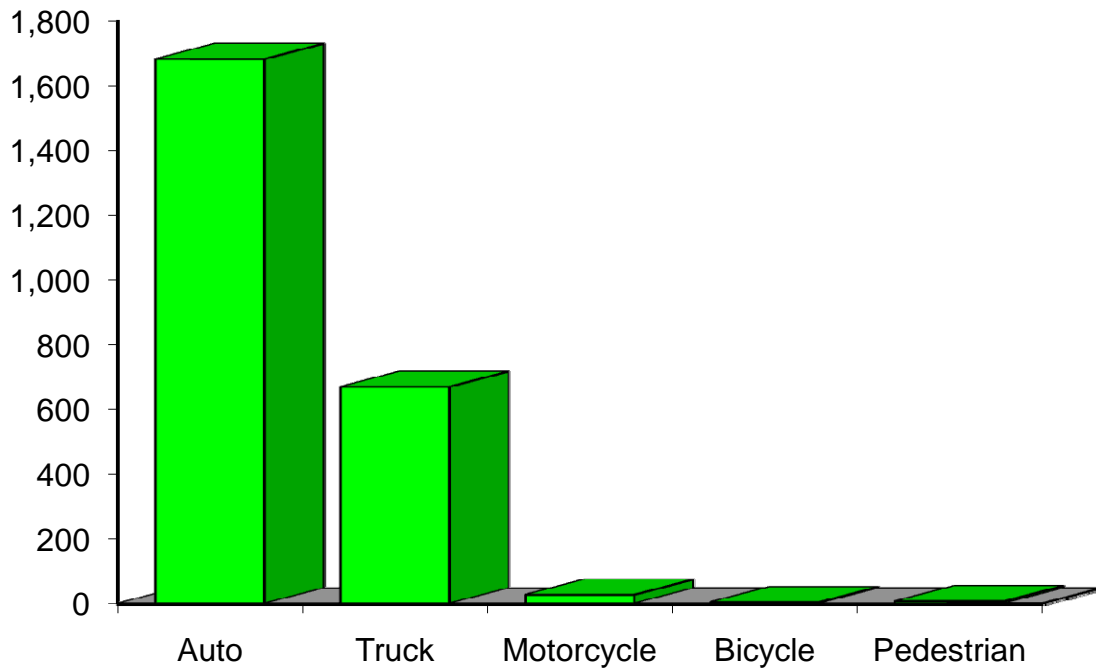
Indicates a value < 6

**Residents of Price County
Motor Vehicle Crash Deaths
2003-2007**

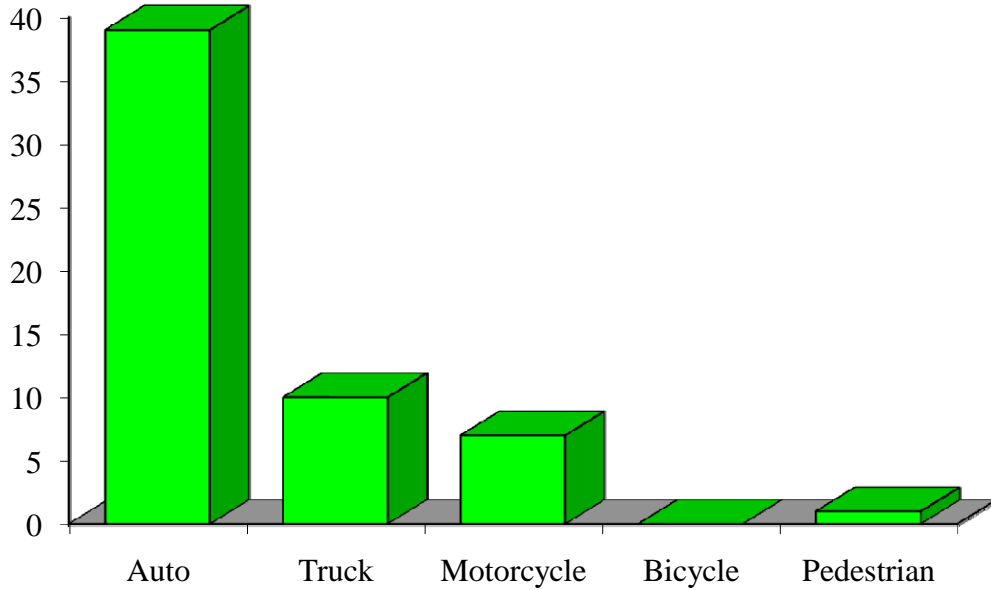
	Auto	Truck	Motorcycle	Bicycle	Pedestrian	Total
2003				0	0	
2004			0	0	0	
2005		0	0	0	0	
2006		0	0	0	0	
2007		0	0	0		
Five-Year Total	14			0		18

Indicates a value < 6

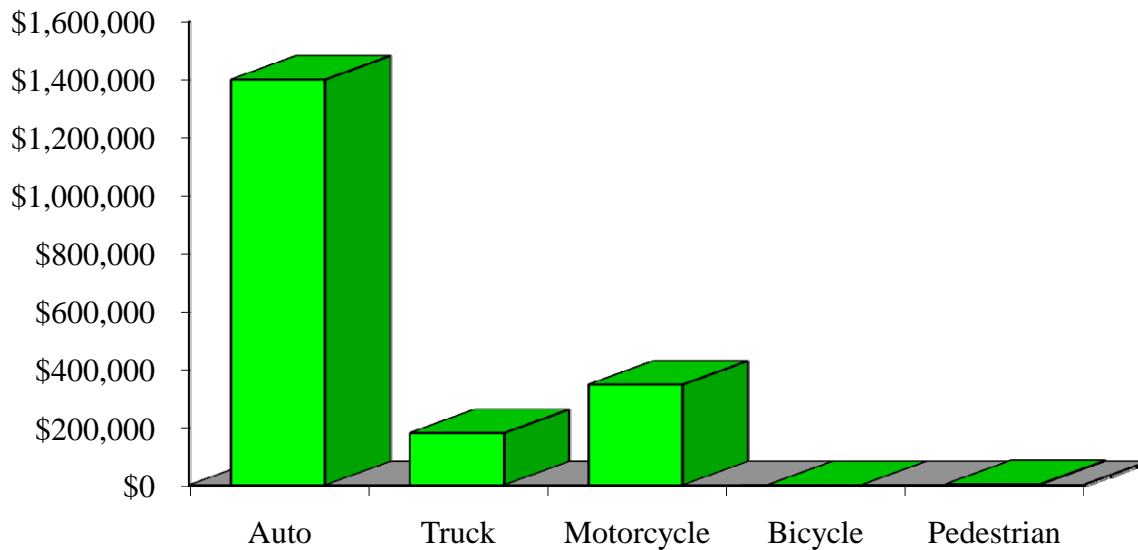
Crash Occupants by Vehicle Type Residents of Price County, 2003-2007



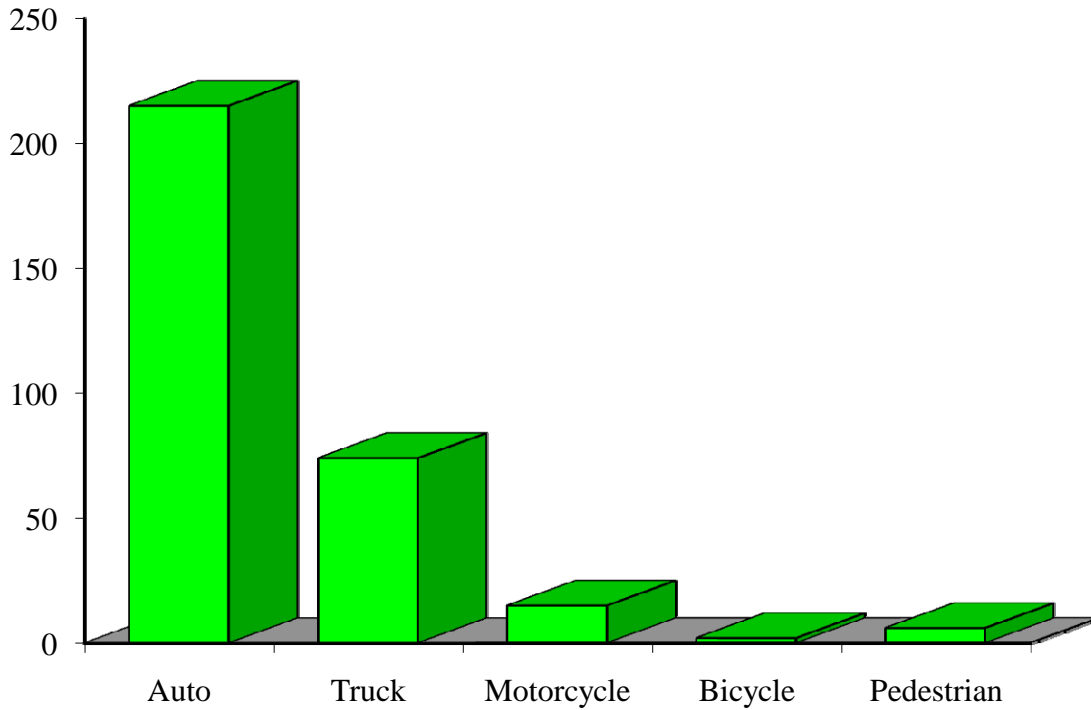
Hospitalizations by Vehicle Type Residents of Price County, 2003-2007



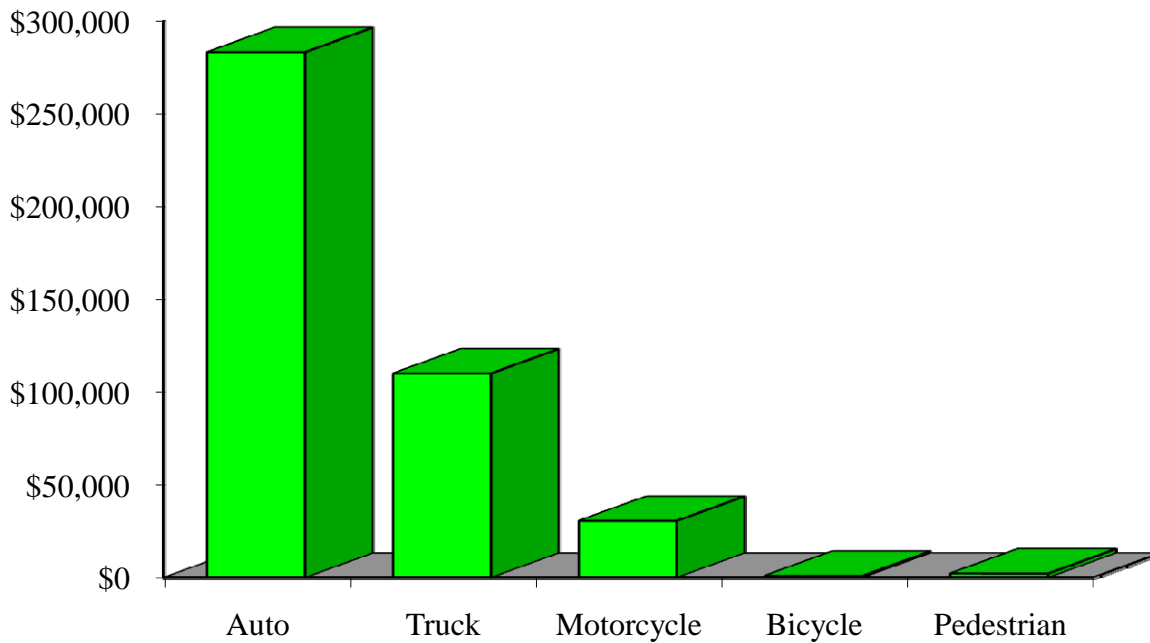
Hospital Charges by Vehicle Type Residents of Price County, 2003-2007



Emergency Room Visits by Vehicle Type Residents of Price County, 2003-2007



Emergency Room Charges by Vehicle Type Residents of Price County, 2003-2007



Residents of Price County and All Wisconsin 'Crash Occupants'

Crash Involvement Rates and Costs

2003-2007

	2003	2004	2005	2006	2007	Average
--	------	------	------	------	------	---------

Annual Crash Involvement

<i>Price County</i>						
Crash Occupants	550	555	427	437	422	478
<i>Rate per 1,000 Residents</i>	35.1	35.4	27.3	27.9	26.9	30.5

<i>State of Wisconsin</i>						
Crash Occupants	316,298	307,373	305,007	286,608	300,270	303,111
<i>Rate per 1,000 Residents</i>	57.0	55.4	55.0	51.6	54.1	54.6

Annual Crash-Related Hospitalizations

<i>Price County</i>						
Crash-Related Hospitalizations	16	10	11	9	11	11
<i>Rate per 100,000 Residents*</i>	102.1	63.8	70.2	57.4	70.2	72.8

<i>State of Wisconsin</i>						
Crash-Related Hospitalizations	4,234	3,983	4,232	4,253	4,146	4,170
<i>Rate per 100,000 Residents*</i>	76.3	71.8	76.3	76.6	74.7	75.1

Annual Crash-Related Hospital Charges

<i>Price County</i>						
Total Crash Injury Hospital Charges	\$570,484	\$160,901	\$495,473	\$254,898	\$449,558	\$386,263
<i>Annual Charge per 1,000 Residents</i>	\$36,413	\$10,270	\$31,625	\$16,270	\$28,695	\$24,655

<i>State of Wisconsin</i>						
Total Crash Injury Hospital Charges	\$126,881,405	\$133,270,653	\$151,898,242	\$162,208,759	\$181,072,379	\$151,066,288
<i>Annual Charge per 1,000 Residents</i>	\$22,861	\$24,012	\$27,368	\$29,226	\$32,625	\$27,219

Annual Crash-Related Emergency Room Visits

<i>Price County</i>						
Crash-Related Emergency Room Visits	57	88	46	62	59	64
<i>Rate per 100,000 Residents*</i>	363.8	561.7	293.6	395.7	376.6	406.9

<i>State of Wisconsin</i>						
Crash-Related Emergency Room Visits	31,664	31,866	33,269	31,268	30,615	\$31,755
<i>Rate per 100,000 Residents*</i>	570.5	574.1	599.4	563.4	551.6	572.1

Annual Crash-Related Emergency Room Charges

<i>Price County</i>						
Total Crash Injury Emergency Room Charges	\$67,838	\$94,708	\$82,029	\$78,844	\$104,052	\$89,908
<i>Annual ER Charge per 1,000 Residents</i>	\$4,330	\$6,045	\$5,236	\$5,032	\$6,641	\$5,739

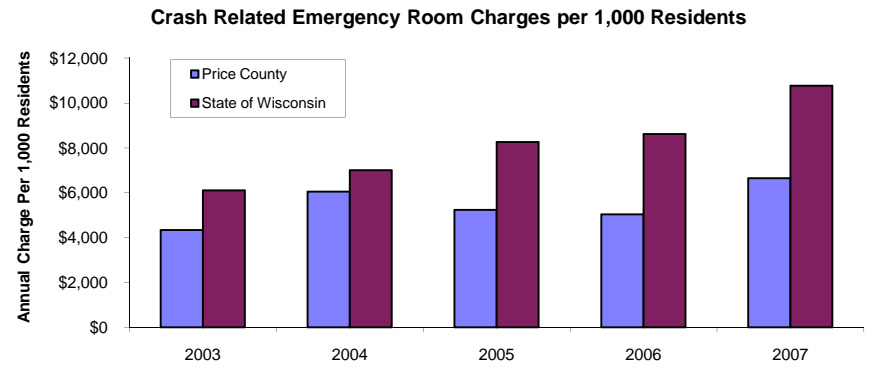
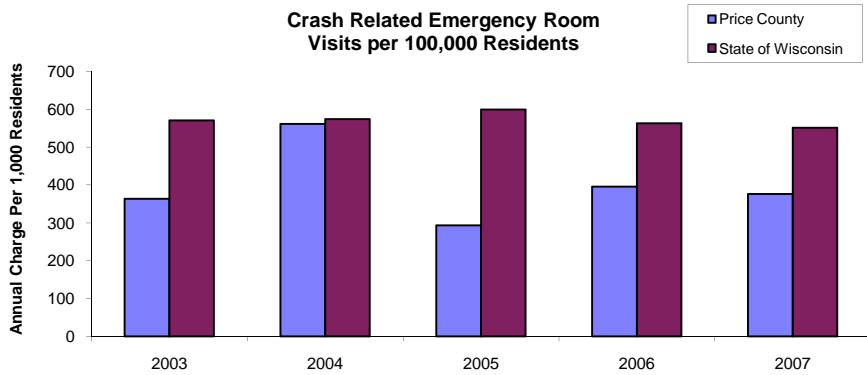
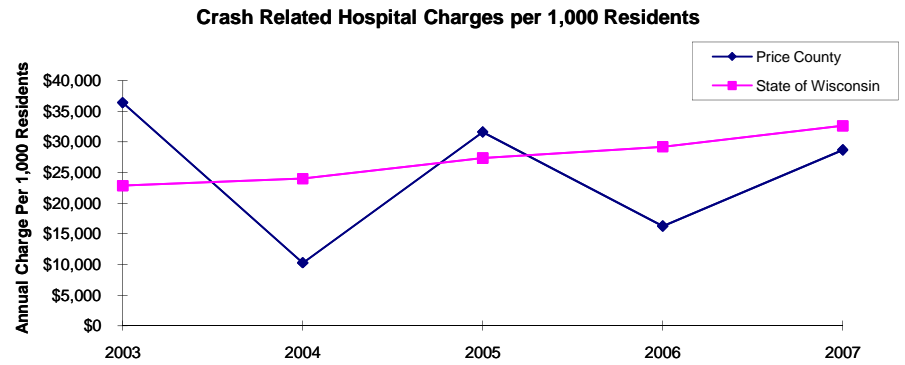
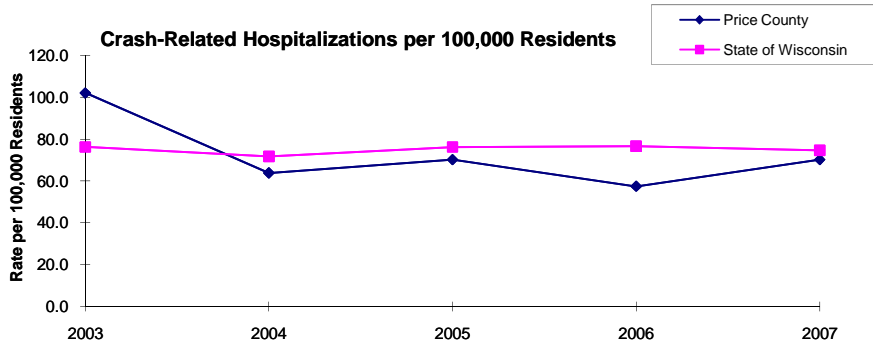
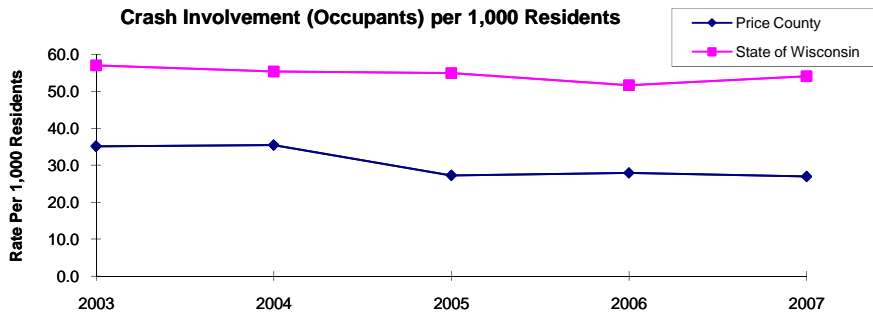
<i>State of Wisconsin</i>						
Crash Injury Emergency Room Charges	\$33,900,299	\$38,900,194	\$45,882,386	\$47,860,521	\$59,808,628	\$48,112,932
<i>Annual ER Charge per 1,000 Residents</i>	6,108	\$7,009	\$8,267	\$8,623	\$10,776	\$8,669

Average Annual Population (computed 2003-2007 population estimates)

<i>Price County</i>	15,667	* Reported as a rate per 100,000 residents to better highlight
<i>State of Wisconsin</i>	5,550,118	variations: 1.12 per 1,000 = 112 per 100,000.

Population data estimates are available at the Demographic Services Center, Wisconsin Department of Administration

Residents of Price County



Zipcodes included in County of Resident Reports

Residents of Price County

54459	54513
54515	54524
54537	54552
54555	54556