
Residents of Racine County

Motor Vehicle Crash Occupants, Hospitalizations, Emergency Room Visits and Fatalities 2003-2007

	Auto	Truck	Motorcycle	Bicycle	Pedestrian	Total
Crash Occupants	49,025	9,399	615	309	501	59,849
Hospitalized Cases	431	72	118	33	73	727
Hospital Charges	\$15,852,652	\$3,154,704	\$5,228,749	\$1,036,920	\$2,391,112	\$27,664,137
Emergency Room Visits	6,464	798	290	177	282	6,483
Emergency Room Charges	\$7,899,115	\$1,178,057	\$528,134	\$236,525	\$317,292	\$7,712,235
Deaths	78	15	19	6	10	128

Indicates a value < 6

**Residents of Racine County
Hospitalization Charges by Vehicle Type
2003-2007**

	Auto	Truck	Motorcycle	Bicycle	Pedestrian
Hospital Charges	\$15,852,652	\$3,154,704	\$5,228,749	\$1,036,920	\$2,391,112
Total Crash Occupants	49,025	9,399	615	309	501
Hospital Charge/Occupant	\$323.36	\$335.64	\$8,502.03	\$3,355.73	\$4,772.68

**Hospitalization Rates by Vehicle Type
2003-2007**

	Auto	Truck	Motorcycle	Bicycle	Pedestrian
Hospital Cases	431	72	118	33	73
Total Crash Occupants	49,025	9,399	615	309	501
Hospitalization Rate/Crash Occupant	0.9%	0.8%	19.2%	10.7%	14.6%

**Emergency Room Charges by Vehicle Type
2003-2007**

	Auto	Truck	Motorcycle	Bicycle	Pedestrian
ER Charges	\$7,899,115	\$1,178,057	\$528,134	\$236,525	\$317,292
Crash Occupants	49,025	9,399	615	309	501
Emergency Room Charges/Crash Occupant	\$161	\$125	\$859	\$765	\$633

**Emergency Room Visits by Vehicle Type
2003-2007**

	Auto	Truck	Motorcycle	Bicycle	Pedestrian
Emergency Room Visits	6,464	798	290	177	282
Total Crash Occupants	49,025	9,399	615	309	501
Emergency Room Rate/Crash Occupant	13.2%	8.5%	47.2%	57.3%	56.3%

Indicates a value < 4

**Residents of Racine County
Occupants of Motor Vehicle Crashes
2003-2007**

	Auto	Truck	Motorcycle	Bicycle	Pedestrian	Total
2003	9,641	1,898	118	52	102	11,811
2004	10,076	1,964	116	74	106	12,336
2005	10,115	1,862	128	72	101	12,278
2006	9,353	1,791	123	65	97	11,429
2007	9,840	1,884	130	46	95	11,995
Five-Year Total	49,025	9,399	615	309	501	59,849

Indicates a value < 6

Residents of Racine County
Motor Vehicle Crash Hospitalizations, Hospital Charges and Emergency Room Visits and Charges
2003-2007

	Auto	Truck	Motorcycle	Bicycle	Pedestrian	Total
2003						
Number of Cases	99	20	19	8	15	161
Total Charges	\$3,490,021	\$986,870	\$382,069	\$315,001	\$459,743	\$5,633,704
2004						
Number of Cases	73	20	19	8	7	127
Total Charges	\$2,333,716	\$905,629	\$987,201	\$129,110	\$353,672	\$4,709,328
2005						
Number of Cases	99	15	28		17	164
Total Charges	\$3,293,266	\$561,652	\$1,001,025	\$51,645	\$350,886	\$5,258,474
2006						
Number of Cases	75	7	29	8	15	134
Total Charges	\$2,288,023	\$148,123	\$1,000,326	\$383,444	\$661,076	\$4,480,992
2007						
Number of Cases	85	10	23		19	141
Total Charges	\$4,447,626	\$552,430	\$1,858,128	\$157,720	\$565,735	\$7,581,639
Five-YearTotal						
Number of Cases	431	72	118	33	73	727
Total Charges	\$15,852,652	\$3,154,704	\$5,228,749	\$1,036,920	\$2,391,112	\$27,664,137

Motor Vehicle Crash Emergency Room Visits and Charges
2003-2007

	Auto	Truck	Motorcycle	Bicycle	Pedestrian	Total
2003						
Number of Cases	1,286	151	57	34	56	1,584
Total Charges	\$1,150,864	\$227,529	\$87,938	\$38,907	\$50,739	\$1,555,977
2004						
Number of Cases	1,271	155	44	38	60	1,568
Total Charges	\$1,353,305	\$206,235	\$83,599	\$42,085	\$81,950	\$1,767,174
2005						
Number of Cases	1,344	171	62	43	54	1,674
Total Charges	\$1,565,733	\$217,967	\$105,658	\$54,799	\$68,134	\$2,012,291
2006						
Number of Cases	1,367	147	53	38	52	1,657
Total Charges	\$1,881,922	\$226,613	\$93,509	\$58,340	\$116,409	\$2,376,793
2007						
Number of Cases	1,196	174	74	24	60	1,528
Total Charges	\$1,947,291	\$299,713	\$157,430	\$42,394	\$60	\$2,446,888
Five -Year Total						
Number of Cases	6,464	798	290	177	282	6,483
Total Charges	\$7,899,115	\$1,178,057	\$528,134	\$236,525	\$317,292	\$7,712,235

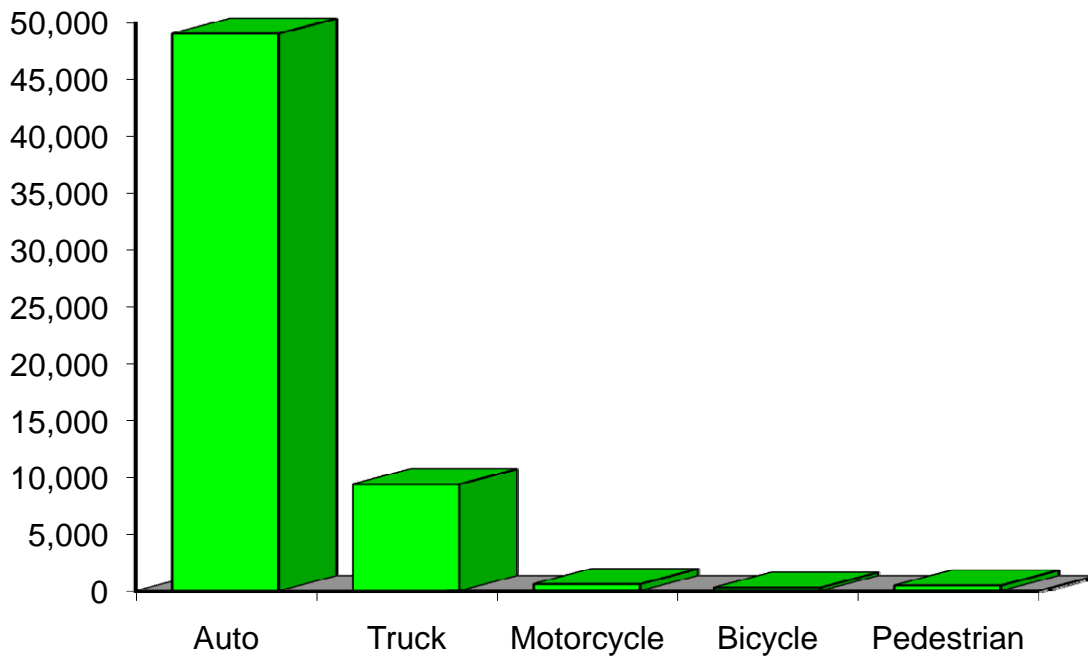
Indicates a value < 6

**Residents of Racine County
Motor Vehicle Crash Deaths
2003-2007**

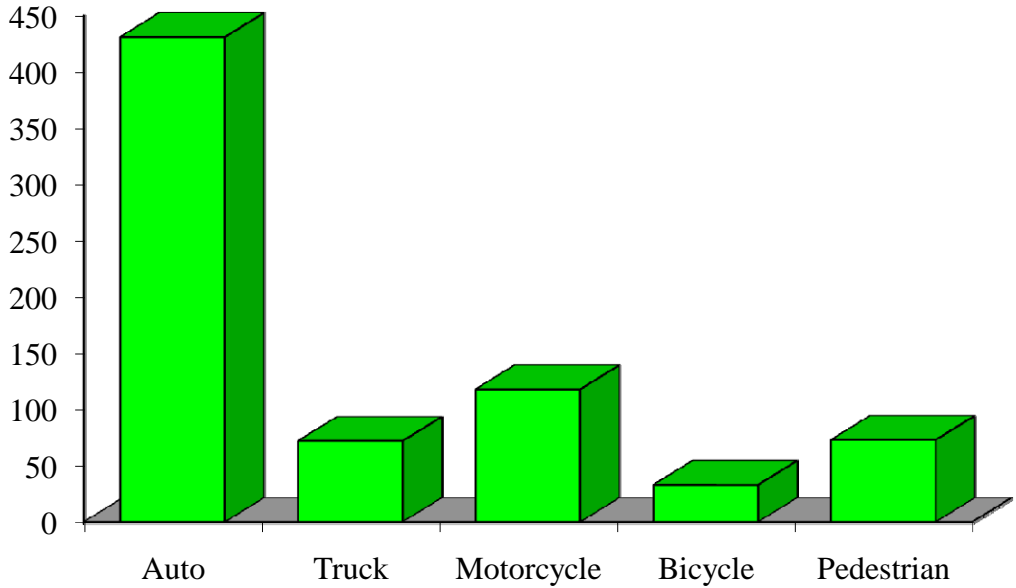
	Auto	Truck	Motorcycle	Bicycle	Pedestrian	Total
2003	10					20
2004	17					27
2005	24					34
2006	17					28
2007	10			0		19
Five-Year Total	78	15	19		10	128

Indicates a value < 6

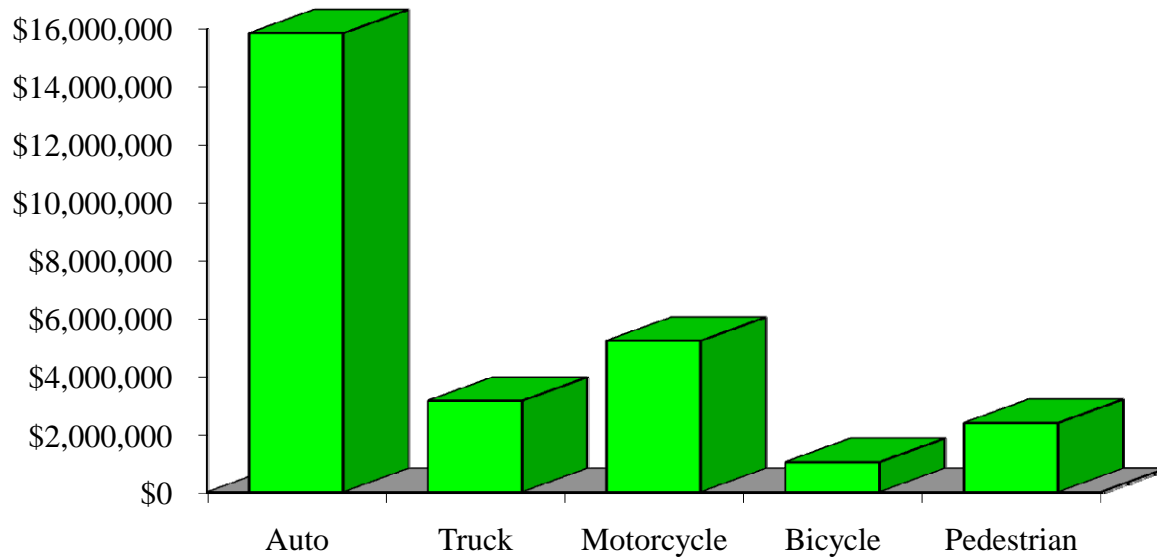
Crash Occupants by Vehicle Type Residents of Racine County, 2003-2007



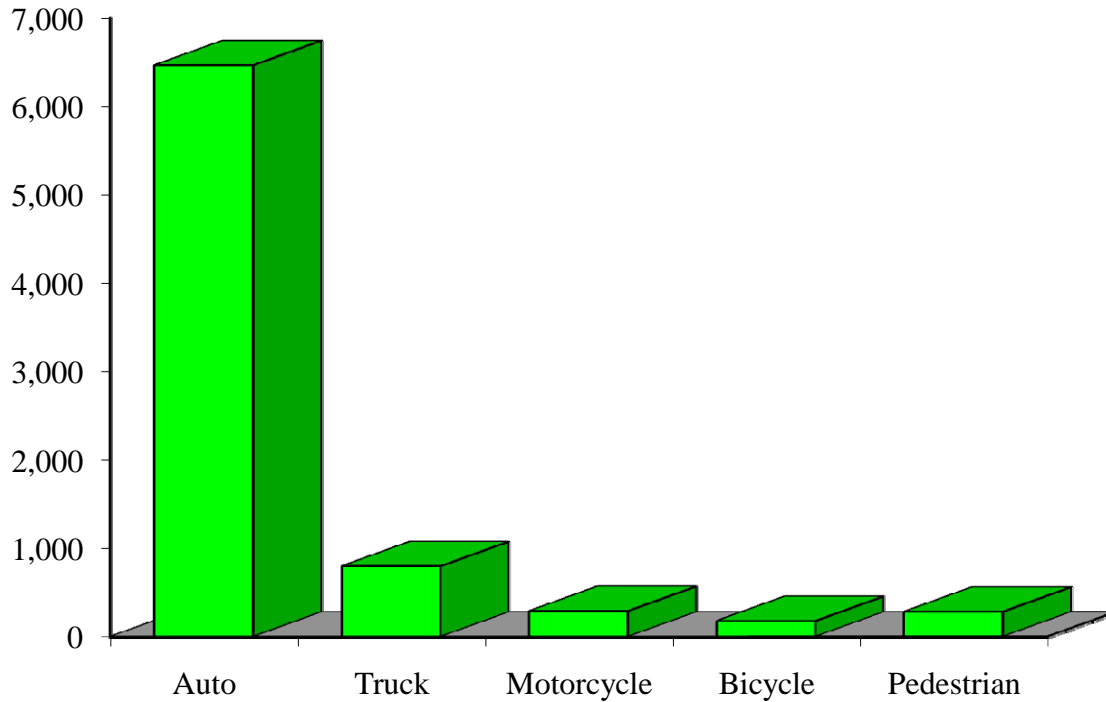
Hospitalizations by Vehicle Type Residents of Racine County, 2003-2007



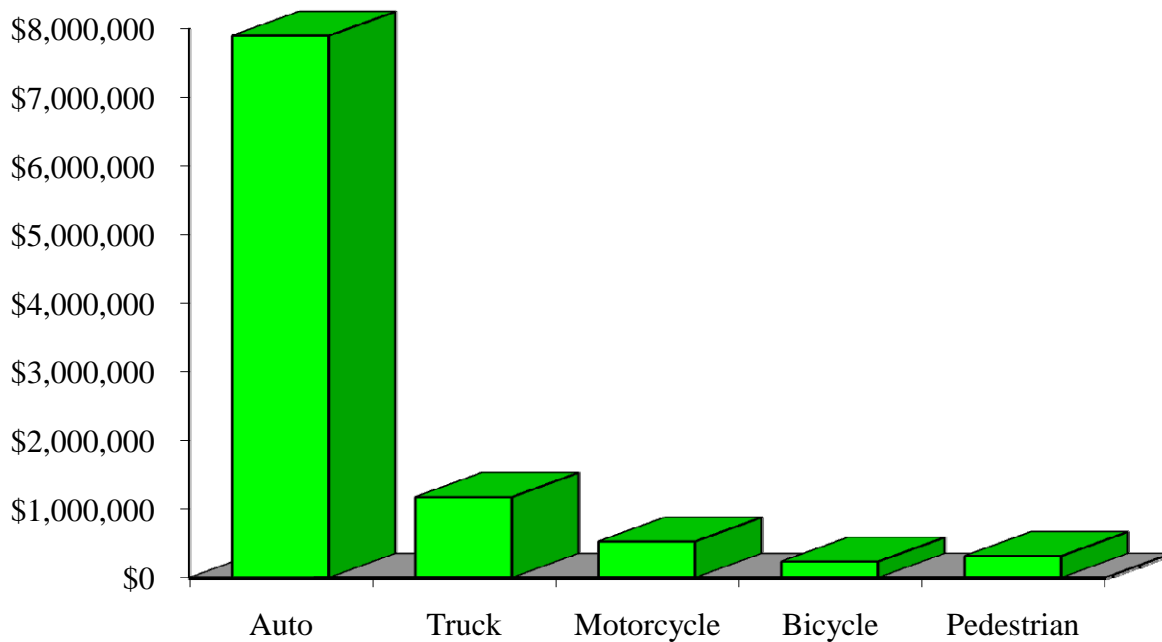
Hospital Charges by Vehicle Type Residents of Racine County, 2003-2007



Emergency Room Visits by Vehicle Type Residents of Racine County, 2003-2007



Emergency Room Charges by Vehicle Type Residents of Racine County, 2003-2007



Residents of Racine County and All Wisconsin 'Crash Occupants'
Crash Involvement Rates and Costs
2003-2007

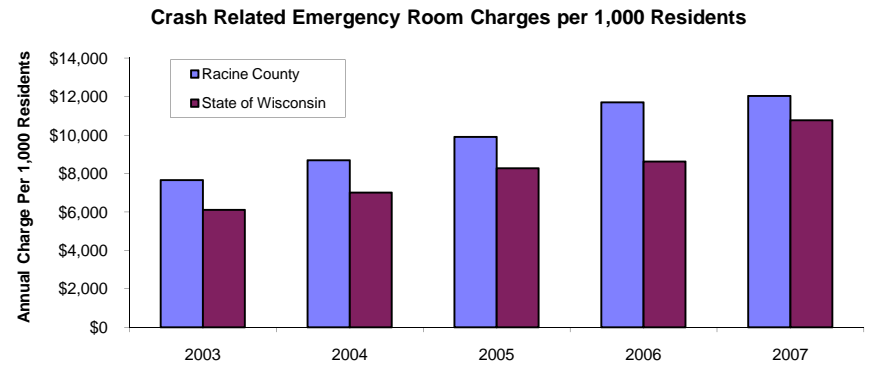
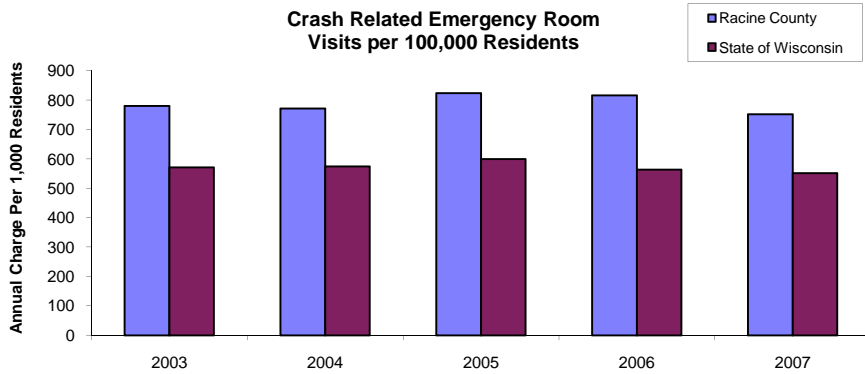
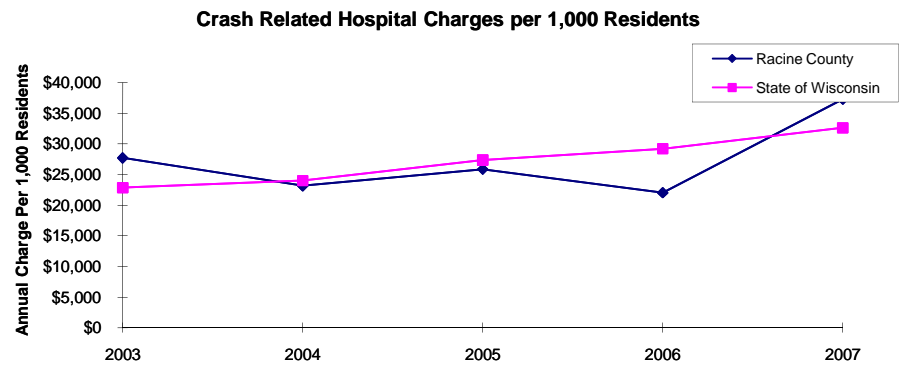
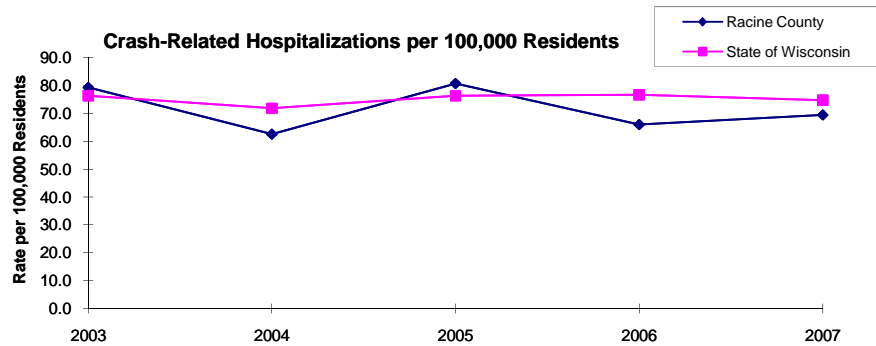
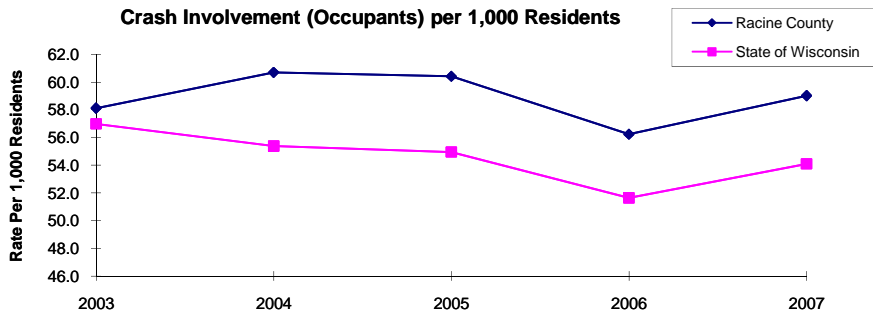
	2003	2004	2005	2006	2007	Average
Annual Crash Involvement						
<i>Racine County</i>						
Crash Occupants	11,811	12,336	12,278	11,429	11,995	11,970
<i>Rate per 1,000 Residents</i>	58.1	60.7	60.4	56.2	59.0	58.9
<i>State of Wisconsin</i>						
Crash Occupants	316,298	307,373	305,007	286,608	300,270	303,111
<i>Rate per 1,000 Residents</i>	57.0	55.4	55.0	51.6	54.1	54.6
Annual Crash-Related Hospitalizations						
<i>Racine County</i>						
Crash-Related Hospitalizations	161	127	164	134	141	145
<i>Rate per 100,000 Residents*</i>	79.2	62.5	80.7	65.9	69.4	71.5
<i>State of Wisconsin</i>						
Crash-Related Hospitalizations	4,234	3,983	4,232	4,253	4,146	4,170
<i>Rate per 100,000 Residents*</i>	76.3	71.8	76.3	76.6	74.7	75.1
Annual Crash-Related Hospital Charges						
<i>Racine County</i>						
Total Crash Injury Hospital Charges	\$5,633,704	\$4,709,328	\$5,258,474	\$4,480,992	\$7,581,639	\$5,532,827
<i>Annual Charge per 1,000 Residents</i>	\$27,719	\$23,171	\$25,873	\$22,047	\$37,303	\$27,223
<i>State of Wisconsin</i>						
Total Crash Injury Hospital Charges	\$126,881,405	\$133,270,653	\$151,898,242	\$162,208,759	\$181,072,379	\$151,066,288
<i>Annual Charge per 1,000 Residents</i>	\$22,861	\$24,012	\$27,368	\$29,226	\$32,625	\$27,219
Annual Crash-Related Emergency Room Visits						
<i>Racine County</i>						
Crash-Related Emergency Room Visits	1584	1,568	1674	1,657	1,528	1,607
<i>Rate per 100,000 Residents*</i>	779.4	771.5	823.6	815.3	751.8	790.6
<i>State of Wisconsin</i>						
Crash-Related Emergency Room Visits	31,664	31,866	33,269	31,268	30,615	\$31,755
<i>Rate per 100,000 Residents*</i>	570.5	574.1	599.4	563.4	551.6	572.1
Annual Crash-Related Emergency Room Charges						
<i>Racine County</i>						
Total Crash Injury Emergency Room Charges	\$1,555,977	\$1,767,174	\$2,012,291	\$2,376,793	\$2,446,888	\$2,150,787
<i>Annual ER Charge per 1,000 Residents</i>	\$7,656	\$8,695	\$9,901	\$11,694	\$12,039	\$10,582
<i>State of Wisconsin</i>						
Crash Injury Emergency Room Charges	\$33,900,299	\$38,900,194	\$45,882,386	\$47,860,521	\$59,808,628	\$48,112,932
<i>Annual ER Charge per 1,000 Residents</i>	6,108	\$7,009	\$8,267	\$8,623	\$10,776	\$8,669

Average Annual Population (computed 2003-2007 population estimates)

<i>Racine County</i>	203,243	* Reported as a rate per 100,000 residents to better highlight
<i>State of Wisconsin</i>	5,550,118	variations: 1.12 per 1,000 = 112 per 100,000.

Population data estimates are available at the Demographic Services Center, Wisconsin Department of Administration

Residents of Racine County



Zipcodes included in County of Resident Reports

Residents of Racine County

53105	53106
53107	53108
53126	53139
53167	53177
53182	53185
53400-53408	