
Residents of Rock County

Motor Vehicle Crash Occupants, Hospitalizations, Emergency Room Visits and Fatalities 2003-2007

	Auto	Truck	Motorcycle	Bicycle	Pedestrian	Total
Crash Occupants	32,534	8,183	477	248	292	41,734
Hospitalized Cases	361	92	99	21	48	621
Hospital Charges	\$15,959,388	\$5,446,185	\$4,177,249	\$629,135	\$2,778,955	\$28,990,912
Emergency Room Visits	3,483	549	221	112	145	3,636
Emergency Room Charges	\$5,211,702	\$903,298	\$437,159	\$157,936	\$175,602	\$5,036,649
Deaths	91	22	7	4	6	130

Indicates a value < 6

**Residents of Rock County
Hospitalization Charges by Vehicle Type
2003-2007**

	Auto	Truck	Motorcycle	Bicycle	Pedestrian
Hospital Charges	\$15,959,388	\$5,446,185	\$4,177,249	\$629,135	\$2,778,955
Total Crash Occupants	32,534	8,183	477	248	292
Hospital Charge/Occupant	\$490.54	\$665.55	\$8,757.34	\$2,536.83	\$9,516.97

**Hospitalization Rates by Vehicle Type
2003-2007**

	Auto	Truck	Motorcycle	Bicycle	Pedestrian
Hospital Cases	361	92	99	21	48
Total Crash Occupants	32,534	8,183	477	248	292
Hospitalization Rate/Crash Occupant	1.1%	1.1%	20.8%	8.5%	16.4%

**Emergency Room Charges by Vehicle Type
2003-2007**

	Auto	Truck	Motorcycle	Bicycle	Pedestrian
ER Charges	\$5,211,702	\$903,298	\$437,159	\$157,936	\$175,602
Crash Occupants	32,534	8,183	477	248	292
Emergency Room Charges/Crash Occupant	\$160	\$110	\$916	\$637	\$601

**Emergency Room Visits by Vehicle Type
2003-2007**

	Auto	Truck	Motorcycle	Bicycle	Pedestrian
Emergency Room Visits	3,483	549	221	112	145
Total Crash Occupants	32,534	8,183	477	248	292
Emergency Room Rate/Crash Occupant	10.7%	6.7%	46.3%	45.2%	49.7%

Indicates a value < 4

**Residents of Rock County
Occupants of Motor Vehicle Crashes
2003-2007**

	Auto	Truck	Motorcycle	Bicycle	Pedestrian	Total
2003	6,688	1,724	76	59	62	8,609
2004	6,508	1,625	100	42	47	8,322
2005	6,669	1,794	85	63	63	8,674
2006	5,908	1,470	107	40	59	7,584
2007	6,761	1,570	109	44	61	8,545
Five-Year Total	32,534	8,183	477	248	292	41,734

Indicates a value < 6

**Residents of Rock County
Motor Vehicle Crash Hospitalizations, Hospital Charges and Emergency Room Visits and Charges
2003-2007**

	Auto	Truck	Motorcycle	Bicycle	Pedestrian	Total
2003						
Number of Cases	81	16	20			127
Total Charges	\$2,615,461	\$767,241	\$727,363	\$98,998	\$125,711	\$4,334,774
2004						
Number of Cases	66	22	24		8	125
Total Charges	\$2,399,069	\$838,560	\$629,305	\$73,255	\$159,476	\$4,099,665
2005						
Number of Cases	80	17	13			120
Total Charges	\$3,177,007	\$1,733,033	\$695,222	\$116,977	\$647,957	\$6,370,196
2006						
Number of Cases	77	24	15		13	131
Total Charges	\$4,359,156	\$1,312,063	\$492,561	\$26,928	\$1,005,252	\$7,195,960
2007						
Number of Cases	57	13	27		15	118
Total Charges	\$3,408,695	\$795,288	\$1,632,798	\$312,977	\$840,559	\$6,990,317
Five-YearTotal						
Number of Cases	361	92	99	21	48	621
Total Charges	\$15,959,388	\$5,446,185	\$4,177,249	\$629,135	\$2,778,955	\$28,990,912

**Motor Vehicle Crash Emergency Room Visits and Charges
2003-2007**

	Auto	Truck	Motorcycle	Bicycle	Pedestrian	Total
2003						
Number of Cases	740	111	30	25	35	941
Total Charges	\$887,549	\$157,437	\$46,114	\$16,944	\$44,260	\$1,152,304
2004						
Number of Cases	695	106	43	18	22	884
Total Charges	\$918,500	\$156,079	\$46,845	\$15,822	\$49,535	\$1,186,781
2005						
Number of Cases	725	148	38	33	30	974
Total Charges	\$782,622	\$196,531	\$60,239	\$57,831	\$42,991	\$1,140,214
2006						
Number of Cases	649	87	54	20	27	837
Total Charges	\$1,163,490	\$194,425	\$125,102	\$35,548	\$38,785	\$1,557,350
2007						
Number of Cases	674	97	56	16	31	874
Total Charges	\$1,459,541	\$198,826	\$158,859	\$31,791	\$31	\$1,849,048
Five -Year Total						
Number of Cases	3,483	549	221	112	145	3,636
Total Charges	\$5,211,702	\$903,298	\$437,159	\$157,936	\$175,602	\$5,036,649

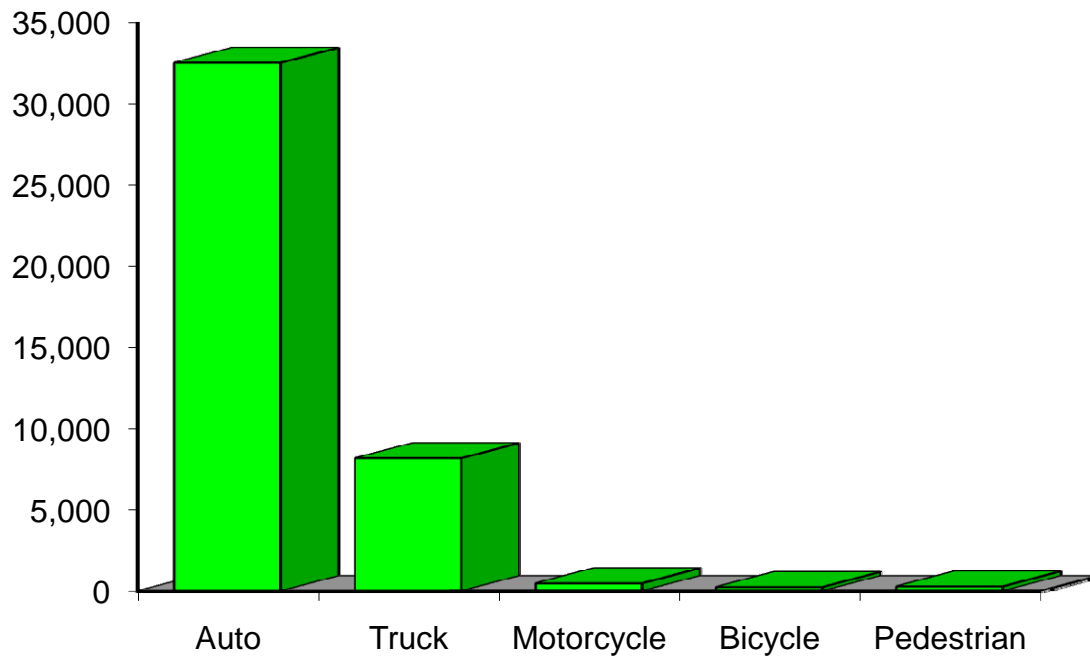
Indicates a value < 6

**Residents of Rock County
Motor Vehicle Crash Deaths
2003-2007**

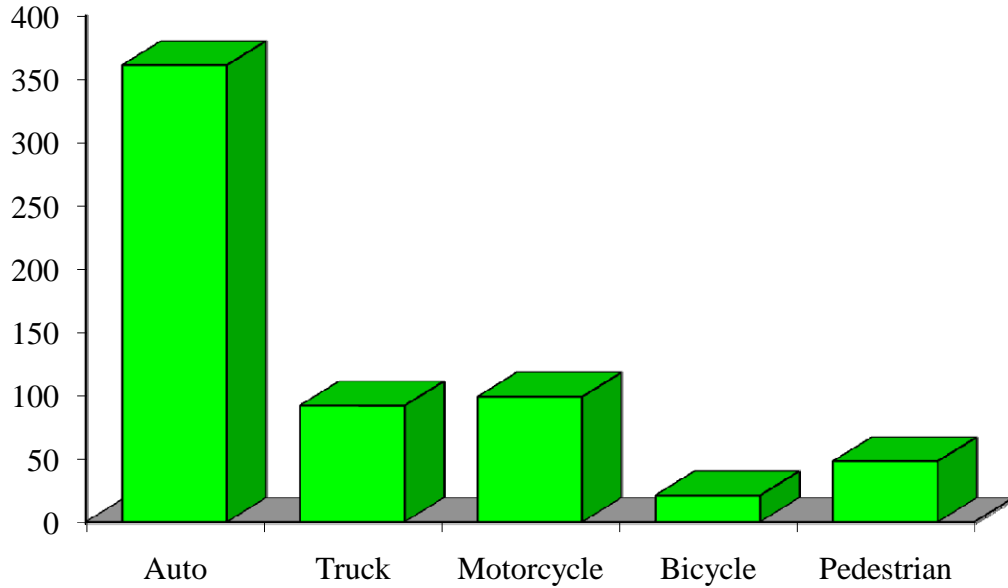
	Auto	Truck	Motorcycle	Bicycle	Pedestrian	Total
2003	18					26
2004	12				0	18
2005	27					38
2006	18	8		0	0	27
2007	16			0		21
Five-Year Total	91	22	7			130

Indicates a value < 6

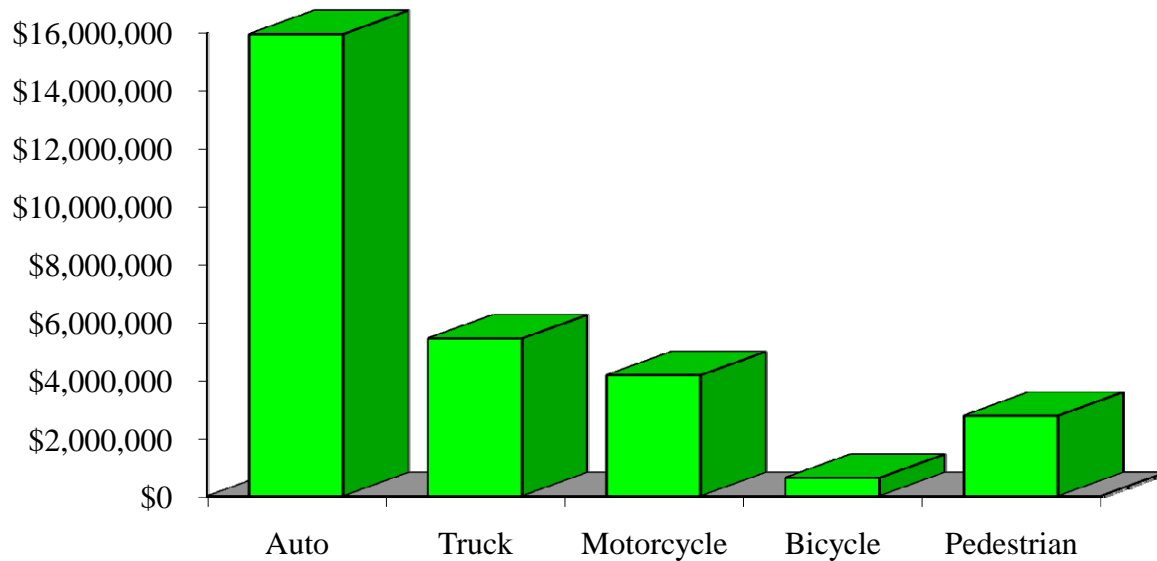
Crash Occupants by Vehicle Type Residents of Rock County, 2003-2007



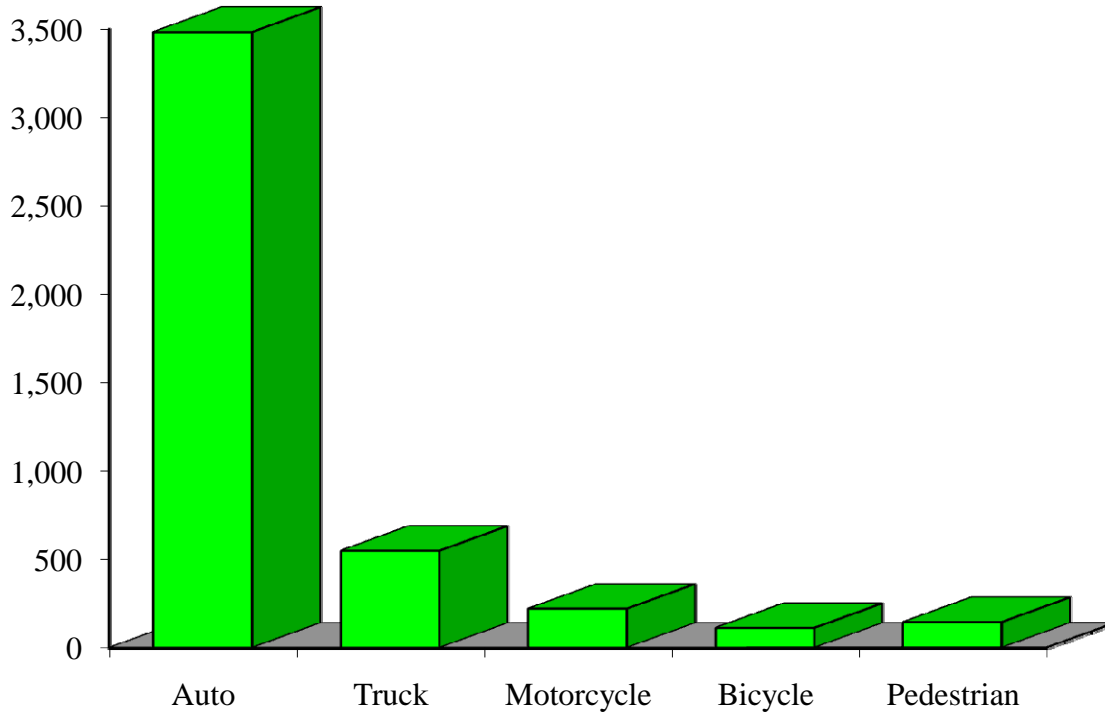
Hospitalizations by Vehicle Type Residents of Rock County, 2003-2007



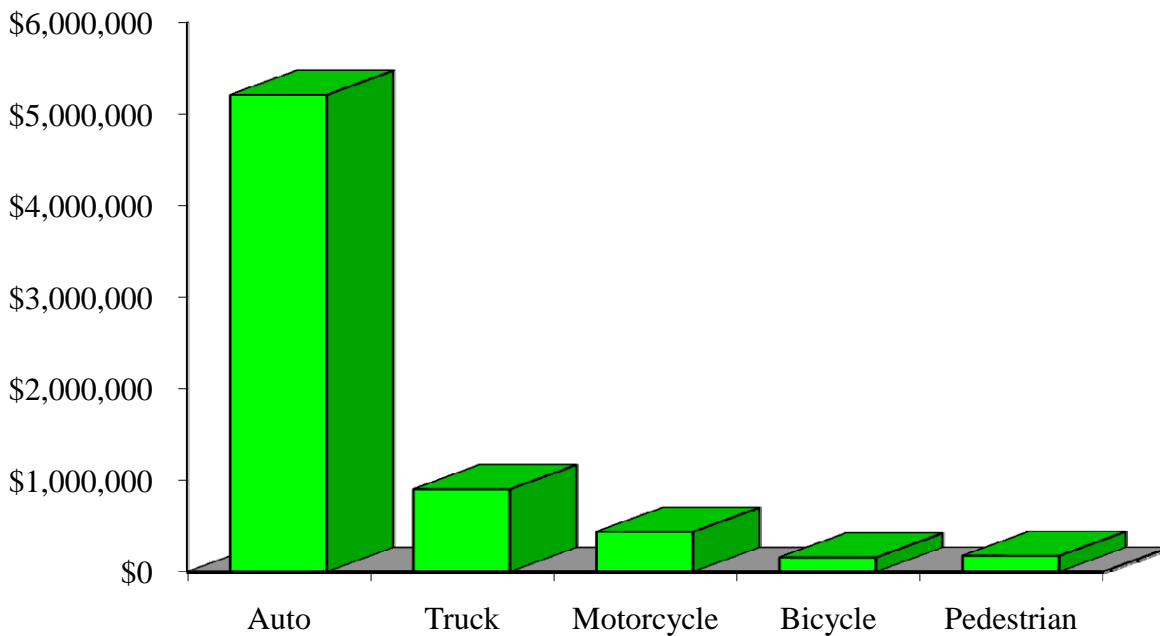
Hospital Charges by Vehicle Type Residents of Rock County, 2003-2007



Emergency Room Visits by Vehicle Type Residents of Rock County, 2003-2007



Emergency Room Charges by Vehicle Type Residents of Rock County, 2003-2007



Residents of Rock County and All Wisconsin 'Crash Occupants'

Crash Involvement Rates and Costs

2003-2007

	2003	2004	2005	2006	2007	Average
--	-------------	-------------	-------------	-------------	-------------	----------------

Annual Crash Involvement

<i>Rock County</i>						
Crash Occupants	8,609	8,322	8,674	7,584	8,545	8,347
<i>Rate per 1,000 Residents</i>	55.1	53.2	55.5	48.5	54.7	53.4

State of Wisconsin

Crash Occupants	316,298	307,373	305,007	286,608	300,270	303,111
<i>Rate per 1,000 Residents</i>	57.0	55.4	55.0	51.6	54.1	54.6

Annual Crash-Related Hospitalizations

<i>Rock County</i>						
Crash-Related Hospitalizations	127	125	120	131	118	124
<i>Rate per 100,000 Residents*</i>	81.2	80.0	76.8	83.8	75.5	79.5

State of Wisconsin

Crash-Related Hospitalizations	4,234	3,983	4,232	4,253	4,146	4,170
<i>Rate per 100,000 Residents*</i>	76.3	71.8	76.3	76.6	74.7	75.1

Annual Crash-Related Hospital Charges

<i>Rock County</i>						
Total Crash Injury Hospital Charges	\$4,334,774	\$4,099,665	\$6,370,196	\$7,195,960	\$6,990,317	\$5,798,182
<i>Annual Charge per 1,000 Residents</i>	\$27,731	\$26,227	\$40,752	\$46,034	\$44,719	\$37,092

State of Wisconsin

Total Crash Injury Hospital Charges	\$126,881,405	\$133,270,653	\$151,898,242	\$162,208,759	\$181,072,379	\$151,066,288
<i>Annual Charge per 1,000 Residents</i>	\$22,861	\$24,012	\$27,368	\$29,226	\$32,625	\$27,219

Annual Crash-Related Emergency Room Visits

<i>Rock County</i>						
Crash-Related Emergency Room Visits	941	884	974	837	874	892
<i>Rate per 100,000 Residents*</i>	602.0	565.5	623.1	535.4	559.1	570.8

State of Wisconsin

Crash-Related Emergency Room Visits	31,664	31,866	33,269	31,268	30,615	\$31,755
<i>Rate per 100,000 Residents*</i>	570.5	574.1	599.4	563.4	551.6	572.1

Annual Crash-Related Emergency Room Charges

<i>Rock County</i>						
Total Crash Injury Emergency Room Charges	\$1,152,304	\$1,186,781	\$1,140,214	\$1,557,350	\$1,849,048	\$1,433,348
<i>Annual ER Charge per 1,000 Residents</i>	\$7,372	\$7,592	\$7,294	\$9,963	\$11,829	\$9,169

State of Wisconsin

Crash Injury Emergency Room Charges	\$33,900,299	\$38,900,194	\$45,882,386	\$47,860,521	\$59,808,628	\$48,112,932
<i>Annual ER Charge per 1,000 Residents</i>	6,108	\$7,009	\$8,267	\$8,623	\$10,776	\$8,669

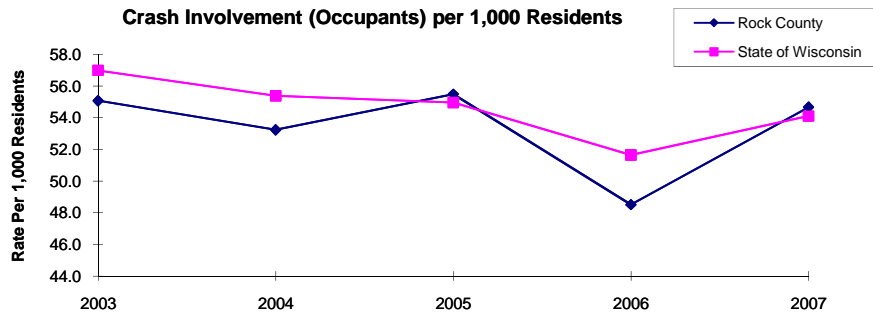
Average Annual Population (computed 2003-2007 population estimates)

<i>Rock County</i>	156,317	* Reported as a rate per 100,000 residents to better highlight				
<i>State of Wisconsin</i>	5,550,118	variations: 1.12 per 1,000 = 112 per 100,000.				

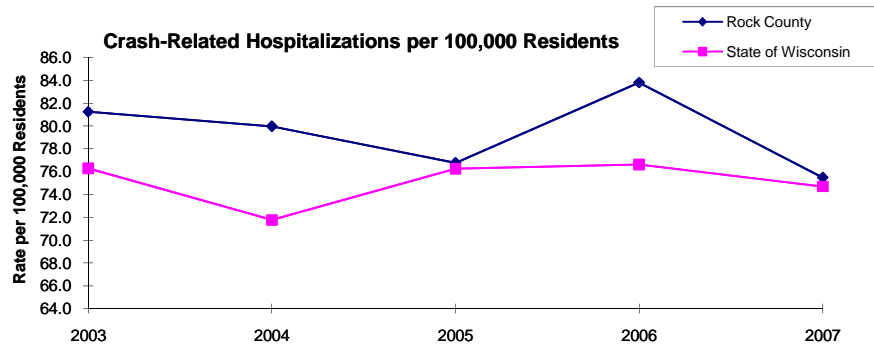
Population data estimates are available at the Demographic Services Center, Wisconsin Department of Administration

Residents of Rock County

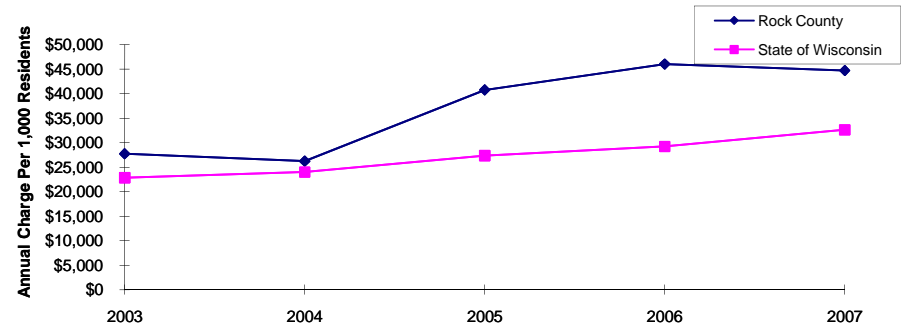
Crash Involvement (Occupants) per 1,000 Residents



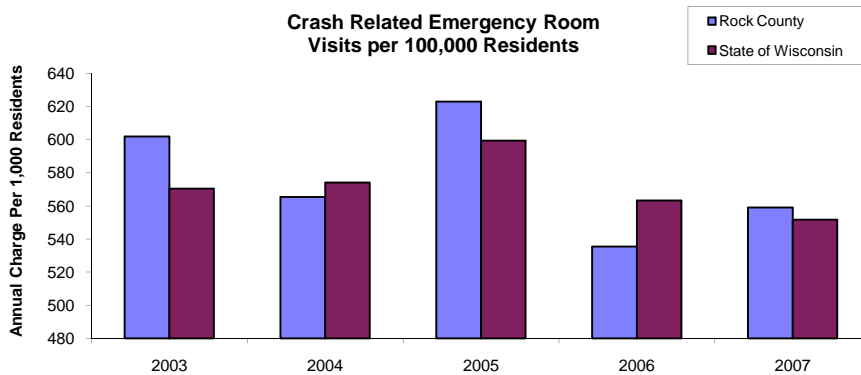
Crash-Related Hospitalizations per 100,000 Residents



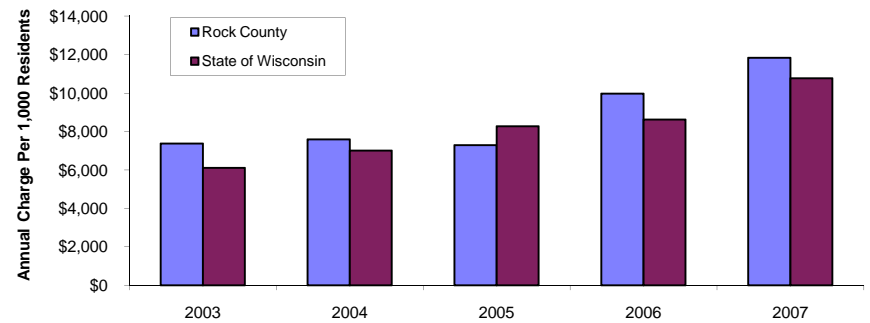
Crash Related Hospital Charges per 1,000 Residents



Crash Related Emergency Room Visits per 100,000 Residents



Crash Related Emergency Room Charges per 1,000 Residents



Zipcodes included in County of Resident Reports

Residents of Rock County

53501	53505
53511	53512
53525	53534
53536	53537
53542	53545
53546	53547
53563	53576