
Residents of Walworth County

Motor Vehicle Crash Occupants, Hospitalizations, Emergency Room Visits and Fatalities 2003-2007

	Auto	Truck	Motorcycle	Bicycle	Pedestrian	Total
Crash Occupants	15,892	3,946	251	59	107	20,255
Hospitalized Cases	244	36	58		16	359
Hospital Charges	\$9,618,027	\$1,127,878	\$3,048,623	\$263,083	\$773,995	\$14,831,606
Emergency Room Visits	2,161	340	113	37	57	2,220
Emergency Room Charges	\$2,866,782	\$600,771	\$256,583	\$40,863	\$65,514	\$3,056,309
Deaths	60	9	16	1	2	88

Indicates a value < 6

**Residents of Walworth County
Hospitalization Charges by Vehicle Type
2003-2007**

	Auto	Truck	Motorcycle	Bicycle	Pedestrian
Hospital Charges	\$9,618,027	\$1,127,878	\$3,048,623	\$263,083	\$773,995
Total Crash Occupants	15,892	3,946	251	59	107
Hospital Charge/Occupant	\$605.21	\$285.83	\$12,145.91	\$4,459.03	\$7,233.60

**Hospitalization Rates by Vehicle Type
2003-2007**

	Auto	Truck	Motorcycle	Bicycle	Pedestrian
Hospital Cases	244	36	58	5	16
Total Crash Occupants	15,892	3,946	251	59	107
Hospitalization Rate/Crash Occupant	1.5%	0.9%	23.1%	8.5%	15.0%

**Emergency Room Charges by Vehicle Type
2003-2007**

	Auto	Truck	Motorcycle	Bicycle	Pedestrian
ER Charges	\$2,866,782	\$600,771	\$256,583	\$40,863	\$65,514
Crash Occupants	15,892	3,946	251	59	107
Emergency Room Charges/Crash Occupant	\$180	\$152	\$1,022	\$693	\$612

**Emergency Room Visits by Vehicle Type
2003-2007**

	Auto	Truck	Motorcycle	Bicycle	Pedestrian
Emergency Room Visits	2,161	340	113	37	57
Total Crash Occupants	15,892	3,946	251	59	107
Emergency Room Rate/Crash Occupant	13.6%	8.6%	45.0%	62.7%	53.3%

Indicates a value < 4

**Residents of Walworth County
Occupants of Motor Vehicle Crashes
2003-2007**

	Auto	Truck	Motorcycle	Bicycle	Pedestrian	Total
2003	3,348	836	42	13	21	4,260
2004	3,181	794	60		25	4,066
2005	3,134	807	53	15	19	4,028
2006	2,928	695	48	15	23	3,709
2007	3,301	814	48	10	19	4,192
Five-Year Total	15,892	3,946	251	59	107	20,255

Indicates a value < 6

**Residents of Walworth County
Motor Vehicle Crash Hospitalizations, Hospital Charges and Emergency Room Visits and Charges
2003-2007**

	Auto	Truck	Motorcycle	Bicycle	Pedestrian	Total
2003						
Number of Cases	56					72
Total Charges	\$1,298,113	\$143,504	\$191,562	\$8,863	\$121,063	\$1,763,105
2004						
Number of Cases	35	8	18	0		64
Total Charges	\$1,468,673	\$361,786	\$968,775	\$0	\$288,041	\$3,087,275
2005						
Number of Cases	44	9	12	0		69
Total Charges	\$2,078,358	\$133,062	\$697,351	\$0	\$249,476	\$3,158,247
2006						
Number of Cases	55		13			76
Total Charges	\$2,547,769	\$65,347	\$564,096	\$153,939	\$66,049	\$3,397,200
2007						
Number of Cases	54	10	10			78
Total Charges	\$2,225,114	\$424,179	\$626,839	\$100,281	\$49,366	\$3,425,779
Five-YearTotal						
Number of Cases	244	36	58		16	359
Total Charges	\$9,618,027	\$1,127,878	\$3,048,623	\$263,083	\$773,995	\$14,831,606

**Motor Vehicle Crash Emergency Room Visits and Charges
2003-2007**

	Auto	Truck	Motorcycle	Bicycle	Pedestrian	Total
2003						
Number of Cases	473	78	23	7	12	593
Total Charges	\$506,893	\$116,283	\$39,002	\$3,435	\$19,515	\$685,128
2004						
Number of Cases	402	66	28		12	513
Total Charges	\$475,230	\$132,681	\$75,495	\$5,813	\$10,381	\$699,600
2005						
Number of Cases	420	71	21	10	10	532
Total Charges	\$565,813	\$140,211	\$66,074	\$11,010	\$8,978	\$792,086
2006						
Number of Cases	466	69	24	9	14	582
Total Charges	\$680,886	\$131,359	\$31,575	\$9,044	\$26,631	\$879,495
2007						
Number of Cases	400	56	17		9	488
Total Charges	\$637,960	\$80,237	\$44,437	\$11,561	\$9	\$774,204
Five -Year Total						
Number of Cases	2,161	340	113	37	57	2,220
Total Charges	\$2,866,782	\$600,771	\$256,583	\$40,863	\$65,514	\$3,056,309

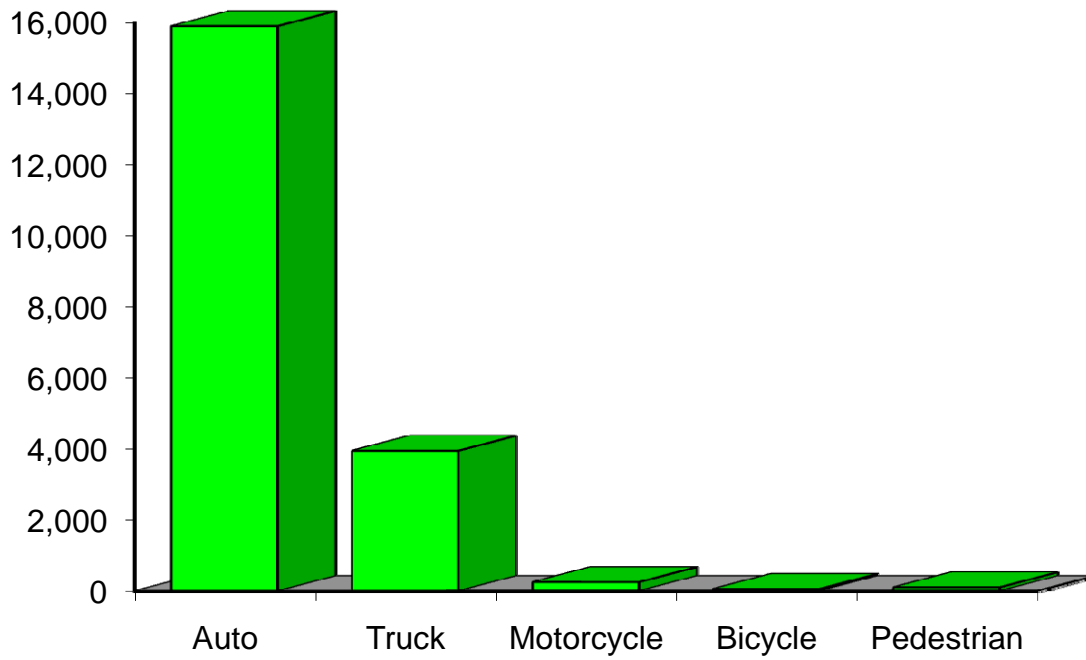
Indicates a value < 6

**Residents of Walworth County
Motor Vehicle Crash Deaths
2003-2007**

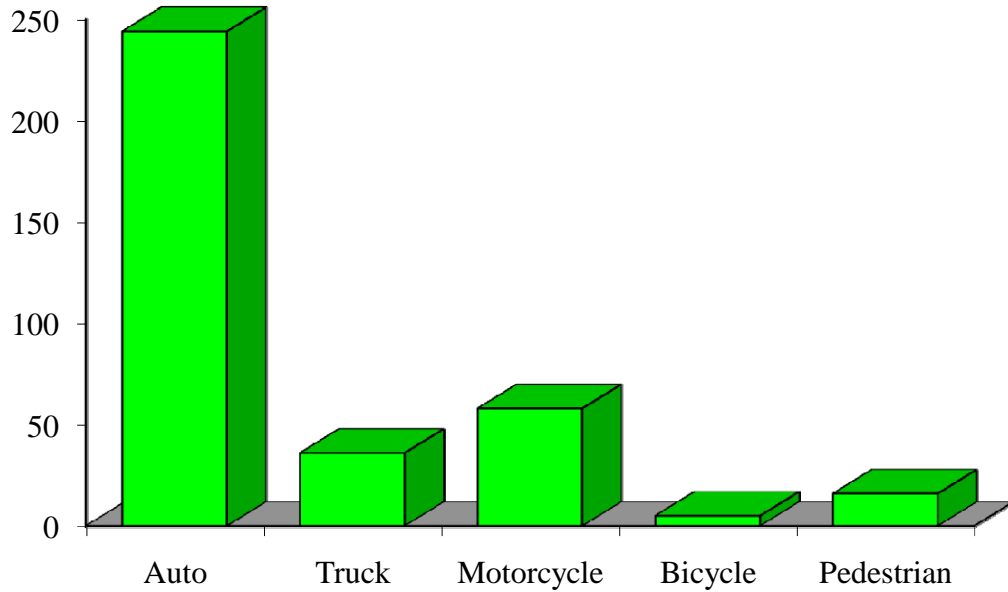
	Auto	Truck	Motorcycle	Bicycle	Pedestrian	Total
2003	18			0		23
2004	8			0	0	17
2005	14			0	0	21
2006	9	0		0	0	11
2007	11					16
Five-Year Total	60	9	16			88

Indicates a value < 6

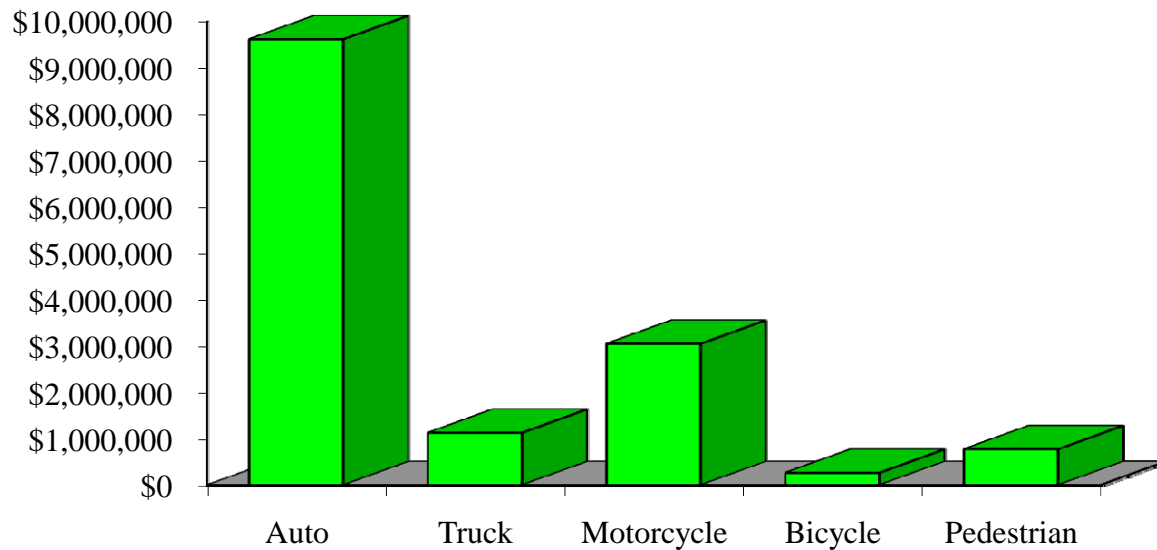
Crash Occupants by Vehicle Type Residents of Walworth County, 2003-2007



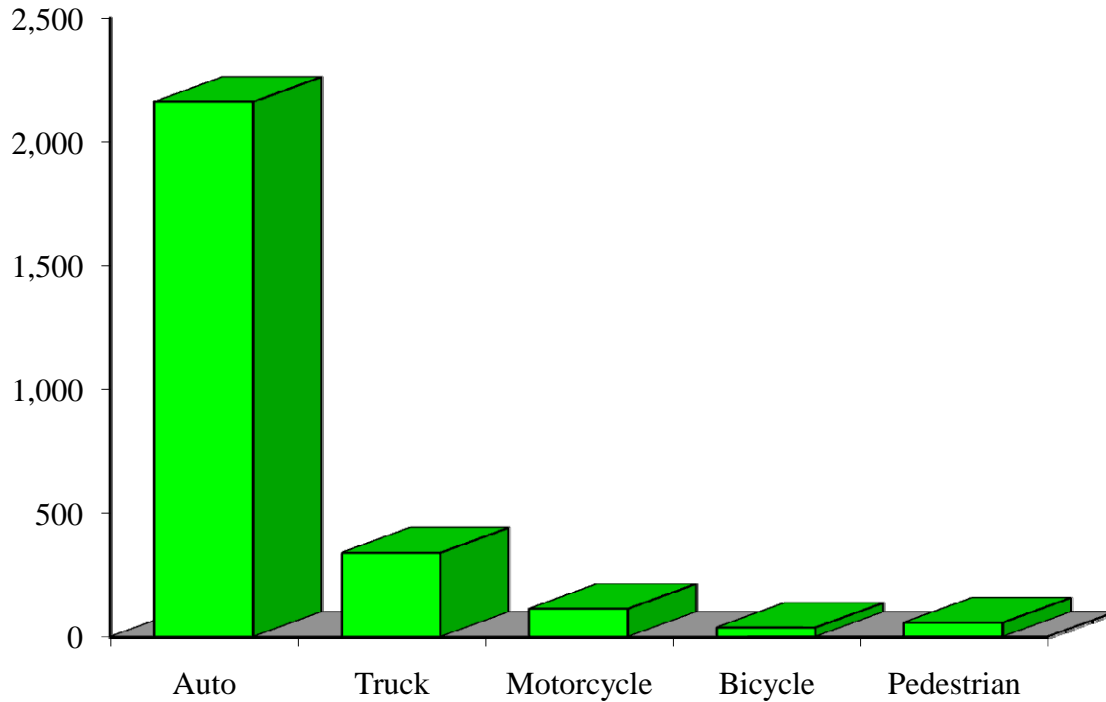
Hospitalizations by Vehicle Type Residents of Walworth County, 2003-2007



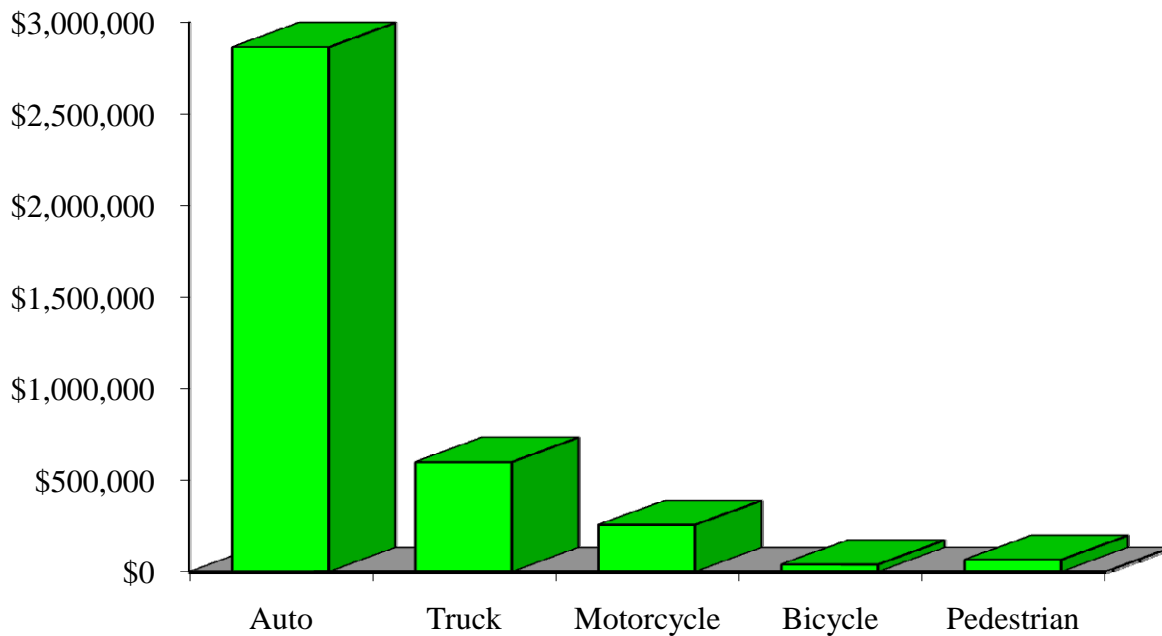
Hospital Charges by Vehicle Type Residents of Walworth County, 2003-2007



Emergency Room Visits by Vehicle Type Residents of Walworth County, 2003-2007



Emergency Room Charges by Vehicle Type Residents of Walworth County, 2003-2007



Residents of Walworth County and All Wisconsin 'Crash Occupants'

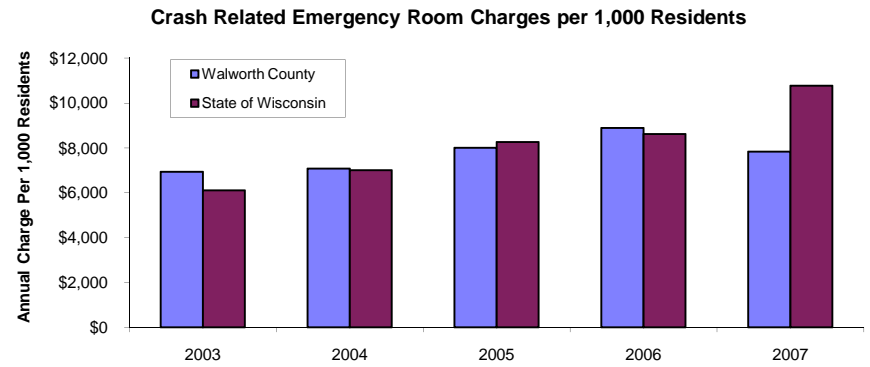
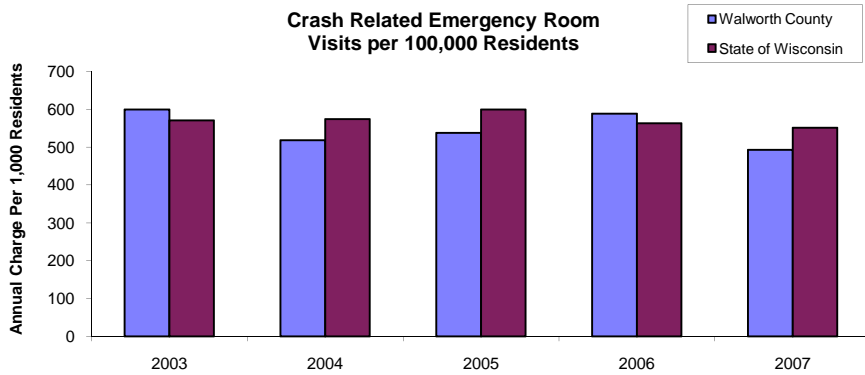
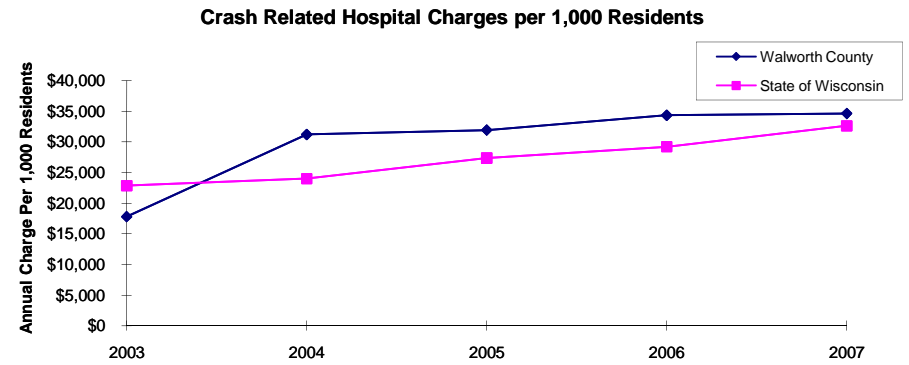
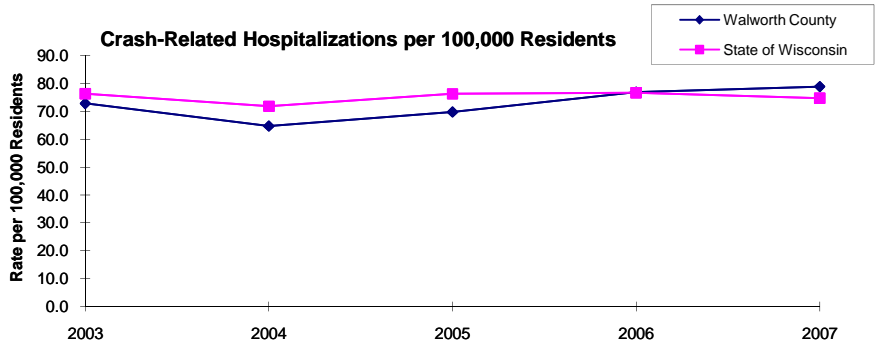
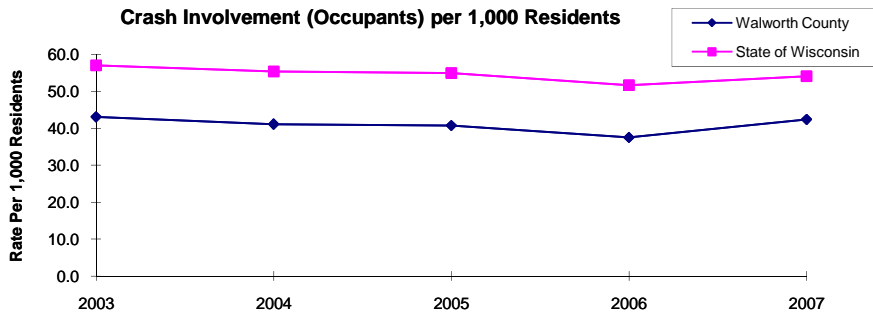
Crash Involvement Rates and Costs

2003-2007

	2003	2004	2005	2006	2007	Average
Annual Crash Involvement						
<i>Walworth County</i>						
Crash Occupants	4,260	4,066	4,028	3,709	4,192	4,051
<i>Rate per 1,000 Residents</i>	43.1	41.1	40.7	37.5	42.4	41.0
<i>State of Wisconsin</i>						
Crash Occupants	316,298	307,373	305,007	286,608	300,270	303,111
<i>Rate per 1,000 Residents</i>	57.0	55.4	55.0	51.6	54.1	54.6
Annual Crash-Related Hospitalizations						
<i>Walworth County</i>						
Crash-Related Hospitalizations	72	64	69	76	78	72
<i>Rate per 100,000 Residents*</i>	72.8	64.7	69.8	76.8	78.9	72.6
<i>State of Wisconsin</i>						
Crash-Related Hospitalizations	4,234	3,983	4,232	4,253	4,146	4,170
<i>Rate per 100,000 Residents*</i>	76.3	71.8	76.3	76.6	74.7	75.1
Annual Crash-Related Hospital Charges						
<i>Walworth County</i>						
Total Crash Injury Hospital Charges	\$1,763,105	\$3,087,275	\$3,158,247	\$3,397,200	\$3,425,779	\$2,966,321
<i>Annual Charge per 1,000 Residents</i>	\$17,826	\$31,215	\$31,933	\$34,349	\$34,638	\$29,992
<i>State of Wisconsin</i>						
Total Crash Injury Hospital Charges	\$126,881,405	\$133,270,653	\$151,898,242	\$162,208,759	\$181,072,379	\$151,066,288
<i>Annual Charge per 1,000 Residents</i>	\$22,861	\$24,012	\$27,368	\$29,226	\$32,625	\$27,219
Annual Crash-Related Emergency Room Visits						
<i>Walworth County</i>						
Crash-Related Emergency Room Visits	593	513	532	582	488	529
<i>Rate per 100,000 Residents*</i>	599.6	518.7	537.9	588.5	493.4	534.6
<i>State of Wisconsin</i>						
Crash-Related Emergency Room Visits	31,664	31,866	33,269	31,268	30,615	\$31,755
<i>Rate per 100,000 Residents*</i>	570.5	574.1	599.4	563.4	551.6	572.1
Annual Crash-Related Emergency Room Charges						
<i>Walworth County</i>						
Total Crash Injury Emergency Room Charges	\$685,128	\$699,600	\$792,086	\$879,495	\$774,204	\$786,346
<i>Annual ER Charge per 1,000 Residents</i>	\$6,927	\$7,074	\$8,009	\$8,892	\$7,828	\$7,951
<i>State of Wisconsin</i>						
Crash Injury Emergency Room Charges	\$33,900,299	\$38,900,194	\$45,882,386	\$47,860,521	\$59,808,628	\$48,112,932
<i>Annual ER Charge per 1,000 Residents</i>	6,108	\$7,009	\$8,267	\$8,623	\$10,776	\$8,669
Average Annual Population (computed 2003-2007 population estimates)						
<i>Walworth County</i>	98,904	* Reported as a rate per 100,000 residents to better highlight				
<i>State of Wisconsin</i>	5,550,118	variations: 1.12 per 1,000 = 112 per 100,000.				

Population data estimates are available at the Demographic Services Center, Wisconsin Department of Administration

Residents of Walworth County



Zipcodes included in County of Resident Reports

Residents of Walworth County

53114	53115
53120	53121
53125	53128
53138	53147
53148	53157
53176	53184
53190	53191
53195	53585