

Residents of Washburn County

**Motor Vehicle Crash Occupants, Hospitalizations, Emergency Room Visits and Fatalities
2003-2007**

	Auto	Truck	Motorcycle	Bicycle	Pedestrian	Total
Crash Occupants	2,082	837	33		12	2,967
Hospitalized Cases	33	11				52
Hospital Charges	\$479,211	\$153,035	\$139,456	\$129,794	\$3,617	\$905,113
Emergency Room Visits	294	86	15		8	321
Emergency Room Charges	\$332,125	\$80,654	\$24,443	\$940	\$3,280	\$329,922
Deaths	13	6	0	0	0	19

Indicates a value < 6

**Residents of Washburn County
Hospitalization Charges by Vehicle Type
2003-2007**

	Auto	Truck	Motorcycle	Bicycle	Pedestrian
Hospital Charges	\$479,211	\$153,035	\$139,456	\$129,794	\$3,617
Total Crash Occupants	2,082	837	33		12
Hospital Charge/Occupant	\$230.17	\$182.84	\$4,225.94	\$43,264.67	\$301.42

**Hospitalization Rates by Vehicle Type
2003-2007**

	Auto	Truck	Motorcycle	Bicycle	Pedestrian
Hospital Cases	33	11	6		
Total Crash Occupants	2,082	837	33		12
Hospitalization Rate/Crash Occupant	1.6%	1.3%	18.2%	33.3%	8.3%

**Emergency Room Charges by Vehicle Type
2003-2007**

	Auto	Truck	Motorcycle	Bicycle	Pedestrian
ER Charges	\$332,125	\$80,654	\$24,443	\$940	\$3,280
Crash Occupants	2,082	837	33		12
Emergency Room Charges/Crash Occupant	\$160	\$96	\$741	\$313	\$273

**Emergency Room Visits by Vehicle Type
2003-2007**

	Auto	Truck	Motorcycle	Bicycle	Pedestrian
Emergency Room Visits	294	86	15		8
Total Crash Occupants	2,082	837	33		12
Emergency Room Rate/Crash Occupant	14.1%	10.3%	45.5%	33.3%	66.7%

Indicates a value < 4

**Residents of Washburn County
Occupants of Motor Vehicle Crashes
2003-2007**

	Auto	Truck	Motorcycle	Bicycle	Pedestrian	Total
2003	493	234		0	8	737
2004	415	169	7			596
2005	439	170	7	0		617
2006	360	123	11		0	495
2007	375	141		0	0	522
Five-Year Total	2,082	837	33		12	2,967

Indicates a value < 6

**Residents of Washburn County
Motor Vehicle Crash Hospitalizations, Hospital Charges and Emergency Room Visits and Charges
2003-2007**

	Auto	Truck	Motorcycle	Bicycle	Pedestrian	Total
2003						
Number of Cases	11			0		16
Total Charges	\$59,632	\$96,071	\$62,736	0	\$3,617	\$222,056
2004						
Number of Cases					0	11
Total Charges	\$136,313	\$16,560	\$3,162	\$129,794	\$0	\$285,829
2005						
Number of Cases	8			0	0	11
Total Charges	\$226,098	\$12,143	\$24,146	0	\$0	\$262,387
2006						
Number of Cases				0	0	8
Total Charges	\$34,895	\$16,312	\$13,381	\$0	0	\$64,588
2007						
Number of Cases				0	0	
Total Charges	\$22,273	\$11,949	\$36,031	0	0	\$70,253
Five-YearTotal						
Number of Cases	33	11				52
Total Charges	\$479,211	\$153,035	\$139,456	\$129,794	\$3,617	\$905,113

**Motor Vehicle Crash Emergency Room Visits and Charges
2003-2007**

	Auto	Truck	Motorcycle	Bicycle	Pedestrian	Total
2003						
Number of Cases	68	22	0	0		96
Total Charges	\$61,162	\$15,458	\$0	0	\$2,310	\$78,930
2004						
Number of Cases	39	17		0		61
Total Charges	\$39,865	\$15,831	\$4,746	\$0	\$580	\$61,022
2005						
Number of Cases	68	13		0		84
Total Charges	\$69,692	\$12,626	\$2,284	0	\$390	\$84,992
2006						
Number of Cases	55	16	8		0	80
Total Charges	\$72,757	\$18,228	\$13,053	\$940	0	\$104,978
2007						
Number of Cases	64	18		0	0	83
Total Charges	\$88,649	\$18,511	\$4,360	0	0	\$111,520
Five -Year Total						
Number of Cases	294	86	15		8	321
Total Charges	\$332,125	\$80,654	\$24,443	\$940	\$3,280	\$329,922

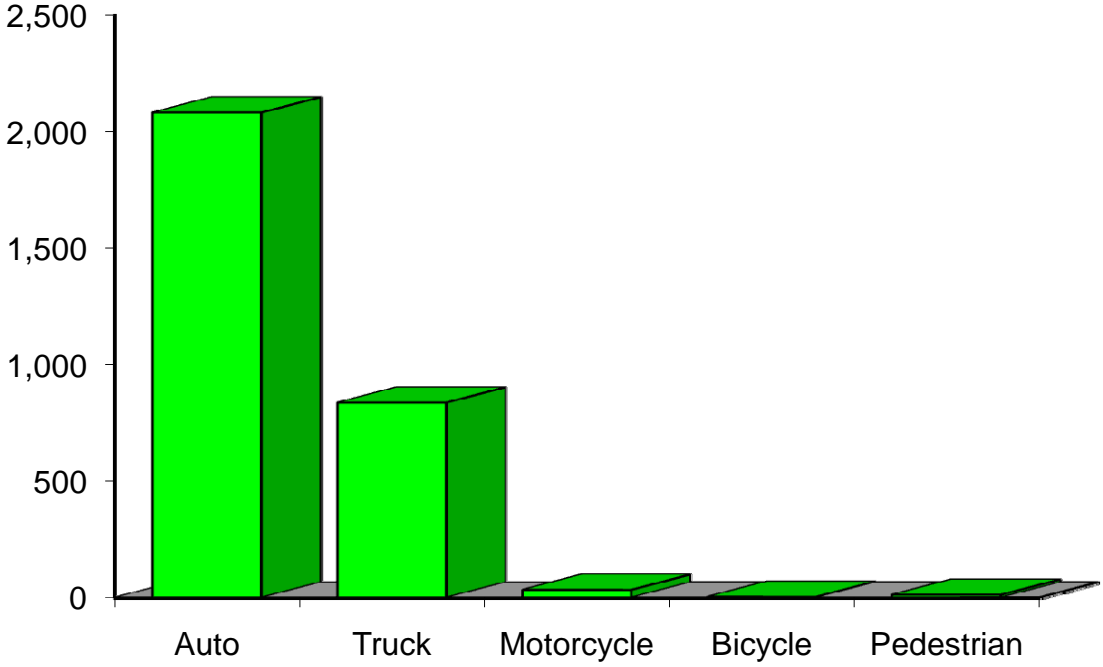
Indicates a value < 6

**Residents of Washburn County
Motor Vehicle Crash Deaths
2003-2007**

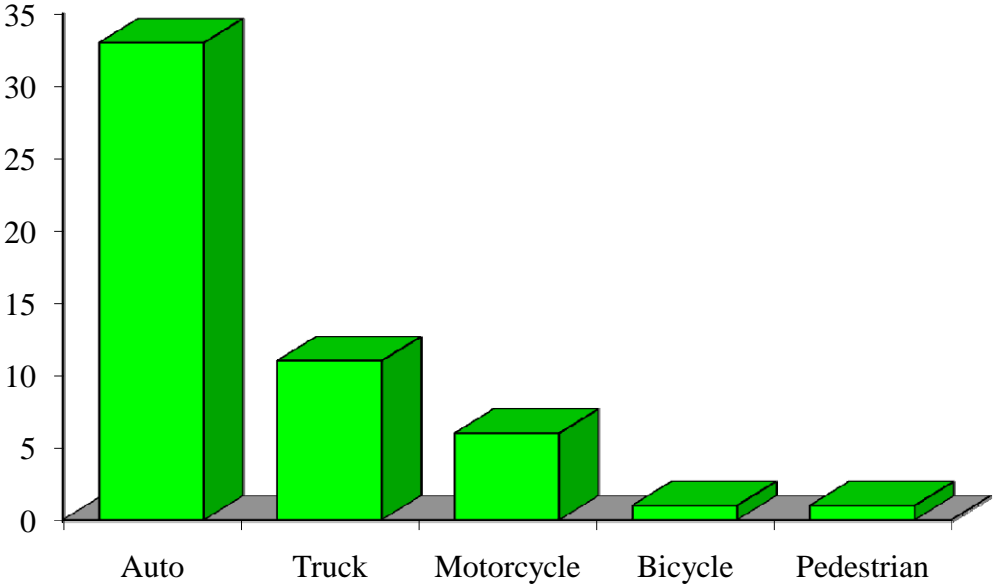
	Auto	Truck	Motorcycle	Bicycle	Pedestrian	Total
2003			0	0	0	
2004		0	0	0	0	
2005			0	0	0	
2006			0	0	0	8
2007		0	0	0	0	
Five-Year Total	13		0	0	0	19

Indicates a value < 6

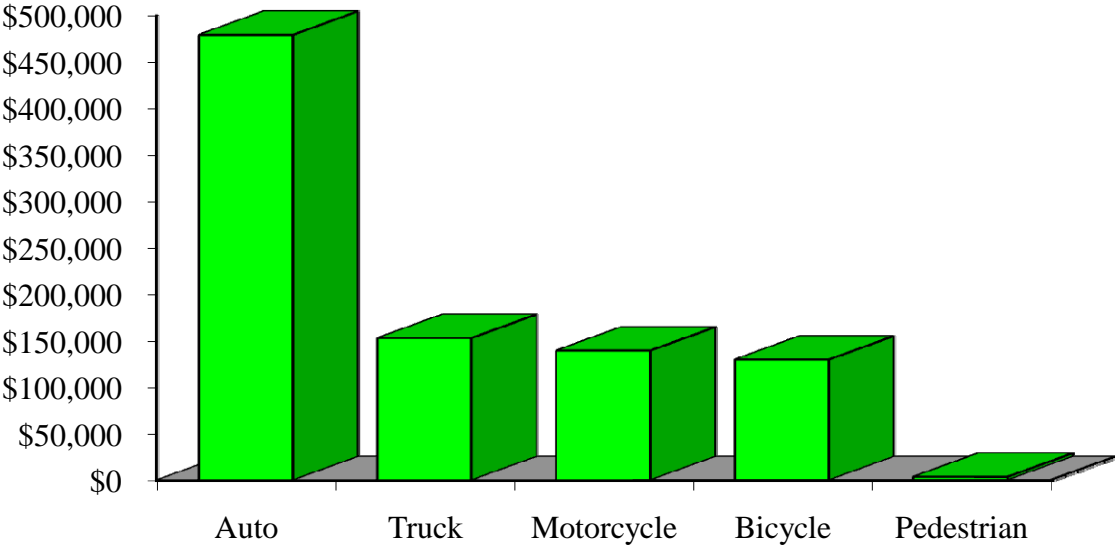
Crash Occupants by Vehicle Type Residents of Washburn County, 2003-2007



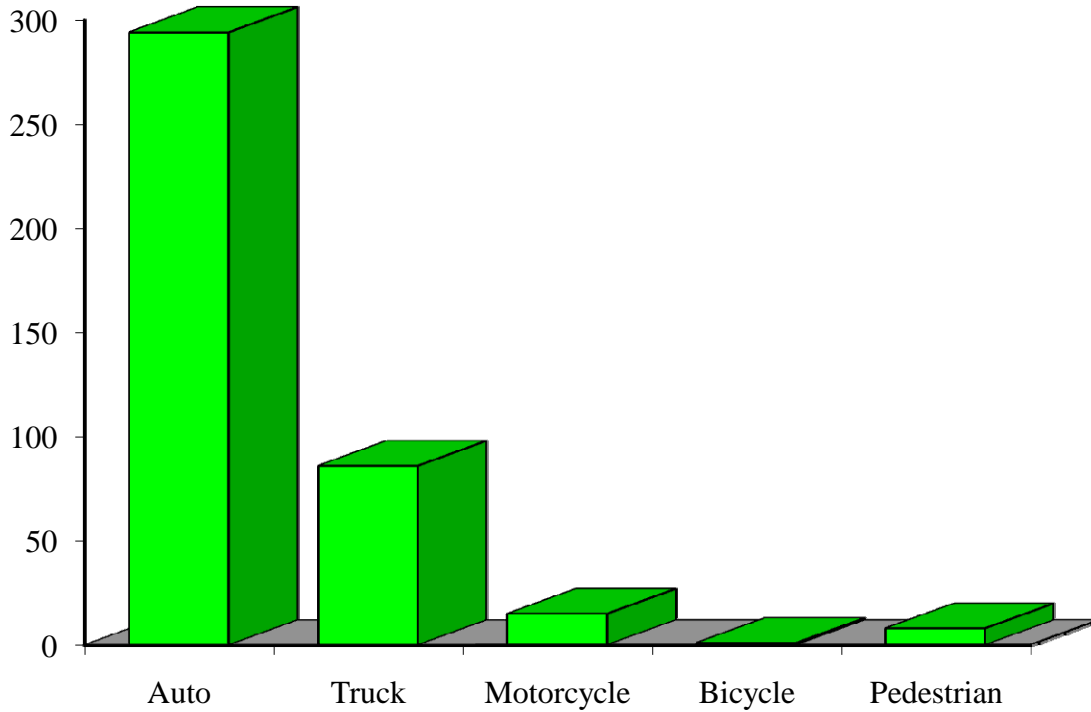
Hospitalizations by Vehicle Type Residents of Washburn County, 2003-2007



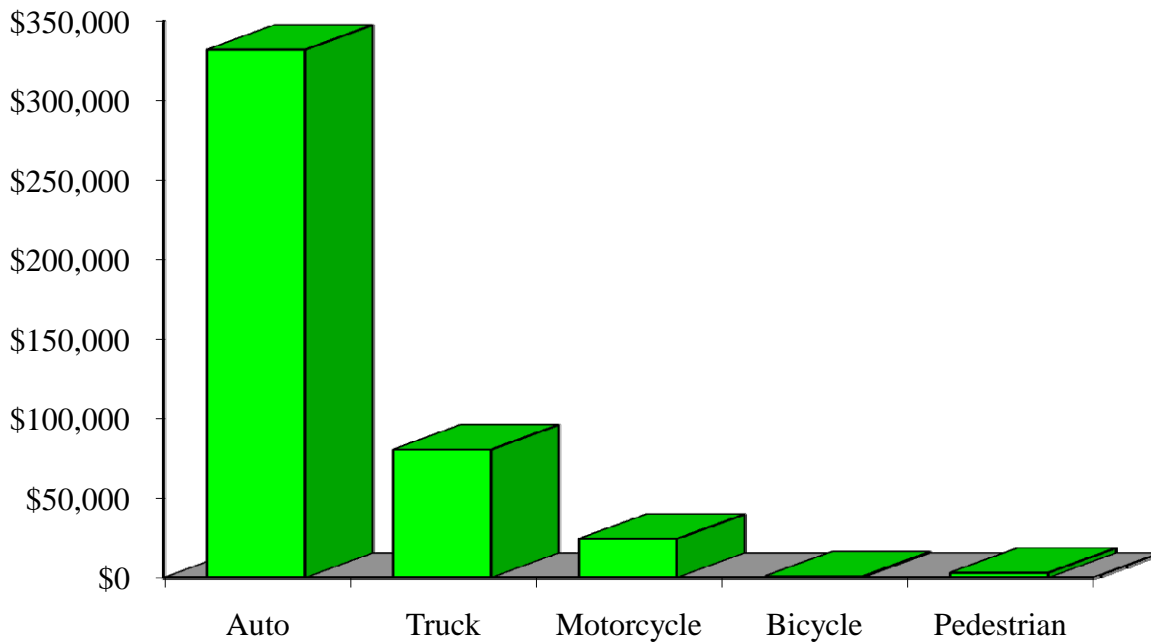
Hospital Charges by Vehicle Type Residents of Washburn County, 2003-2007



Emergency Room Visits by Vehicle Type Residents of Washburn County, 2003-2007



Emergency Room Charges by Vehicle Type Residents of Washburn County, 2003-2007



Residents of Washburn County and All Wisconsin 'Crash Occupants'

Crash Involvement Rates and Costs

2003-2007

	2003	2004	2005	2006	2007	Average
--	------	------	------	------	------	---------

Annual Crash Involvement

<i>Washburn County</i>						
Crash Occupants	737	596	617	495	522	593
<i>Rate per 1,000 Residents</i>	39.7	32.1	33.2	26.6	28.1	31.9

State of Wisconsin

Crash Occupants	316,298	307,373	305,007	286,608	300,270	303,111
<i>Rate per 1,000 Residents</i>	57.0	55.4	55.0	51.6	54.1	54.6

Annual Crash-Related Hospitalizations

<i>Washburn County</i>						
Crash-Related Hospitalizations	16	11	11	8		10
<i>Rate per 100,000 Residents*</i>	86.1	59.2	59.2	43.0	32.3	56.0

State of Wisconsin

Crash-Related Hospitalizations	4,234	3,983	4,232	4,253	4,146	4,170
<i>Rate per 100,000 Residents*</i>	76.3	71.8	76.3	76.6	74.7	75.1

Annual Crash-Related Hospital Charges

<i>Washburn County</i>						
Total Crash Injury Hospital Charges	\$222,056	\$285,829	\$262,387	\$64,588	\$70,253	\$181,023
<i>Annual Charge per 1,000 Residents</i>	\$11,947	\$15,378	\$14,117	\$3,475	\$3,780	\$9,739

State of Wisconsin

Total Crash Injury Hospital Charges	\$126,881,405	\$133,270,653	\$151,898,242	\$162,208,759	\$181,072,379	\$151,066,288
<i>Annual Charge per 1,000 Residents</i>	\$22,861	\$24,012	\$27,368	\$29,226	\$32,625	\$27,219

Annual Crash-Related Emergency Room Visits

<i>Washburn County</i>						
Crash-Related Emergency Room Visits	96	61	84	80	83	77
<i>Rate per 100,000 Residents*</i>	516.5	328.2	451.9	430.4	446.6	414.3

State of Wisconsin

Crash-Related Emergency Room Visits	31,664	31,866	33,269	31,268	30,615	\$31,755
<i>Rate per 100,000 Residents*</i>	570.5	574.1	599.4	563.4	551.6	572.1

Annual Crash-Related Emergency Room Charges

<i>Washburn County</i>						
Total Crash Injury Emergency Room Charges	\$78,930	\$61,022	\$84,992	\$104,978	\$111,520	\$90,628
<i>Annual ER Charge per 1,000 Residents</i>	\$4,247	\$3,283	\$4,573	\$5,648	\$6,000	\$4,876

State of Wisconsin

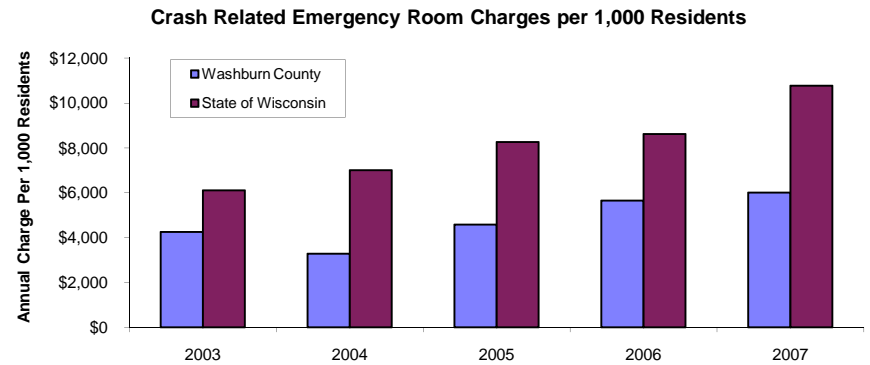
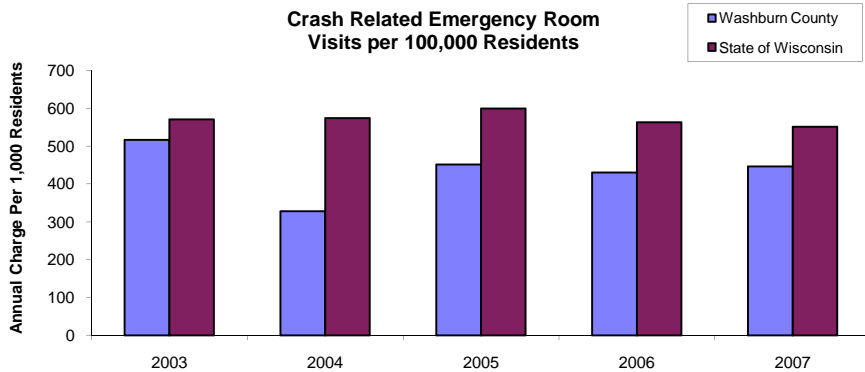
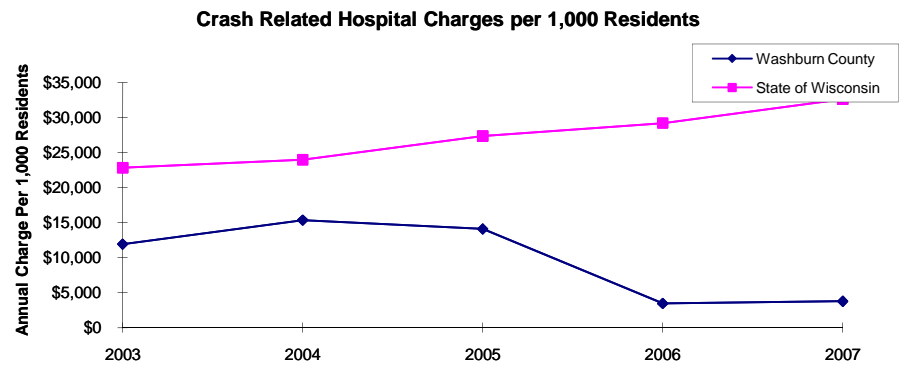
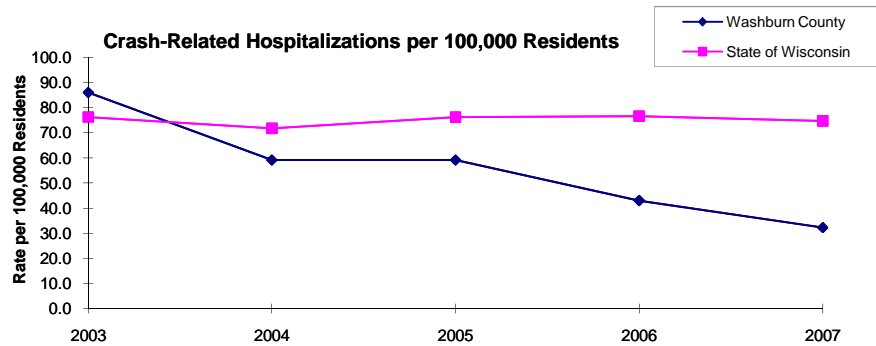
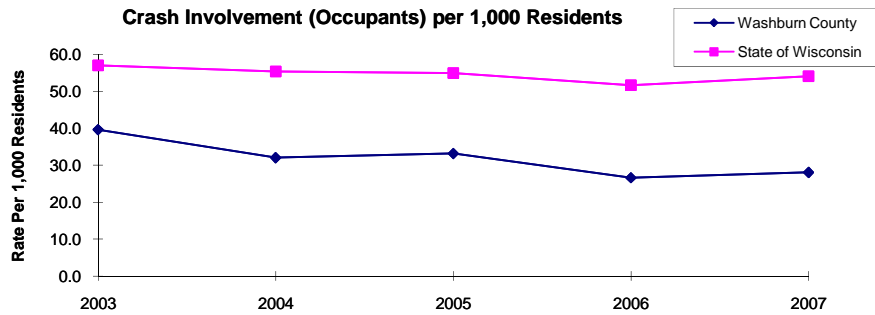
Crash Injury Emergency Room Charges	\$33,900,299	\$38,900,194	\$45,882,386	\$47,860,521	\$59,808,628	\$48,112,932
<i>Annual ER Charge per 1,000 Residents</i>	6,108	\$7,009	\$8,267	\$8,623	\$10,776	\$8,669

Average Annual Population (computed 2003-2007 population estimates)

<i>Washburn County</i>	18,587	* Reported as a rate per 100,000 residents to better highlight
<i>State of Wisconsin</i>	5,550,118	variations: 1.12 per 1,000 = 112 per 100,000.

Population data estimates are available at the Demographic Services Center, Wisconsin Department of Administration

Residents of Washburn County



Zipcodes included in County of Resident Reports

Residents of Washburn County

54801	54817
54859	54870
54871	54875
54888	