
Residents of Waukesha County

**Motor Vehicle Crash Occupants, Hospitalizations, Emergency Room Visits and Fatalities
2003-2007**

	Auto	Truck	Motorcycle	Bicycle	Pedestrian	Total
Crash Occupants	77,039	12,864	947	219	388	91,457
Hospitalized Cases	640	80	181	15	60	976
Hospital Charges	\$22,771,788	\$3,601,153	\$8,414,780	\$403,110	\$3,375,001	\$38,565,832
Emergency Room Visits	7,115	718	449	121	209	6,935
Emergency Room Charges	\$10,949,017	\$1,391,903	\$1,176,964	\$176,717	\$355,892	\$10,426,055
Deaths	98	12	26	1	12	149

Indicates a value < 6

**Residents of Waukesha County
Hospitalization Charges by Vehicle Type
2003-2007**

	Auto	Truck	Motorcycle	Bicycle	Pedestrian
Hospital Charges	\$22,771,788	\$3,601,153	\$8,414,780	\$403,110	\$3,375,001
Total Crash Occupants	77,039	12,864	947	219	388
Hospital Charge/Occupant	\$295.59	\$279.94	\$8,885.72	\$1,840.68	\$8,698.46

**Hospitalization Rates by Vehicle Type
2003-2007**

	Auto	Truck	Motorcycle	Bicycle	Pedestrian
Hospital Cases	640	80	181	15	60
Total Crash Occupants	77,039	12,864	947	219	388
Hospitalization Rate/Crash Occupant	0.8%	0.6%	19.1%	6.8%	15.5%

**Emergency Room Charges by Vehicle Type
2003-2007**

	Auto	Truck	Motorcycle	Bicycle	Pedestrian
ER Charges	\$10,949,017	\$1,391,903	\$1,176,964	\$176,717	\$355,892
Crash Occupants	77,039	12,864	947	219	388
Emergency Room Charges/Crash Occupant	\$142	\$108	\$1,243	\$807	\$917

**Emergency Room Visits by Vehicle Type
2003-2007**

	Auto	Truck	Motorcycle	Bicycle	Pedestrian
Emergency Room Visits	7,115	718	449	121	209
Total Crash Occupants	77,039	12,864	947	219	388
Emergency Room Rate/Crash Occupant	9.2%	5.6%	47.4%	55.3%	53.9%

Indicates a value < 4

**Residents of Waukesha County
Occupants of Motor Vehicle Crashes
2003-2007**

	Auto	Truck	Motorcycle	Bicycle	Pedestrian	Total
2003	15,642	2,735	157	48	91	18,673
2004	15,480	2,731	213	40	74	18,538
2005	15,466	2,621	209	45	85	18,426
2006	14,470	2,297	185	42	66	17,060
2007	15,981	2,480	183	44	72	18,760
Five-Year Total	77,039	12,864	947	219	388	91,457

Indicates a value < 6

Residents of Waukesha County
Motor Vehicle Crash Hospitalizations, Hospital Charges and Emergency Room Visits and Charges
2003-2007

	Auto	Truck	Motorcycle	Bicycle	Pedestrian	Total
2003						
Number of Cases	127	15	28		12	184
Total Charges	\$4,242,715	\$330,041	\$1,415,816	\$23,257	\$670,980	\$6,682,809
2004						
Number of Cases	130	11	33		13	189
Total Charges	\$3,997,356	\$385,473	\$1,320,802	\$113,774	\$499,435	\$6,316,840
2005						
Number of Cases	136	18	41		14	213
Total Charges	\$4,011,002	\$1,304,645	\$1,657,816	\$62,177	\$939,750	\$7,975,390
2006						
Number of Cases	125	19	41		12	202
Total Charges	\$4,652,017	\$499,807	\$1,876,498	\$164,809	\$624,734	\$7,817,865
2007						
Number of Cases	122	17	38		9	188
Total Charges	\$5,868,698	\$1,081,187	\$2,143,848	\$39,093	\$640,102	\$9,772,928
Five-YearTotal						
Number of Cases	640	80	181	15	60	976
Total Charges	\$22,771,788	\$3,601,153	\$8,414,780	\$403,110	\$3,375,001	\$38,565,832

Motor Vehicle Crash Emergency Room Visits and Charges
2003-2007

	Auto	Truck	Motorcycle	Bicycle	Pedestrian	Total
2003						
Number of Cases	1,372	167	68	29	51	1,687
Total Charges	\$1,430,790	\$210,479	\$143,437	\$37,042	\$80,194	\$1,901,942
2004						
Number of Cases	1,446	153	101	25	34	1,759
Total Charges	\$1,853,943	\$246,948	\$230,972	\$24,883	\$34,163	\$2,390,909
2005						
Number of Cases	1,527	130	109	23	50	1,839
Total Charges	\$2,409,733	\$272,939	\$302,773	\$38,304	\$130,302	\$3,154,051
2006						
Number of Cases	1,367	134	87	25	37	1,650
Total Charges	\$2,277,409	\$265,418	\$278,236	\$46,894	\$111,196	\$2,979,153
2007						
Number of Cases	1,403	134	84	19	37	1,677
Total Charges	\$2,977,142	\$396,119	\$221,546	\$29,594	\$37	\$3,624,438
Five -Year Total						
Number of Cases	7,115	718	449	121	209	6,935
Total Charges	\$10,949,017	\$1,391,903	\$1,176,964	\$176,717	\$355,892	\$10,426,055

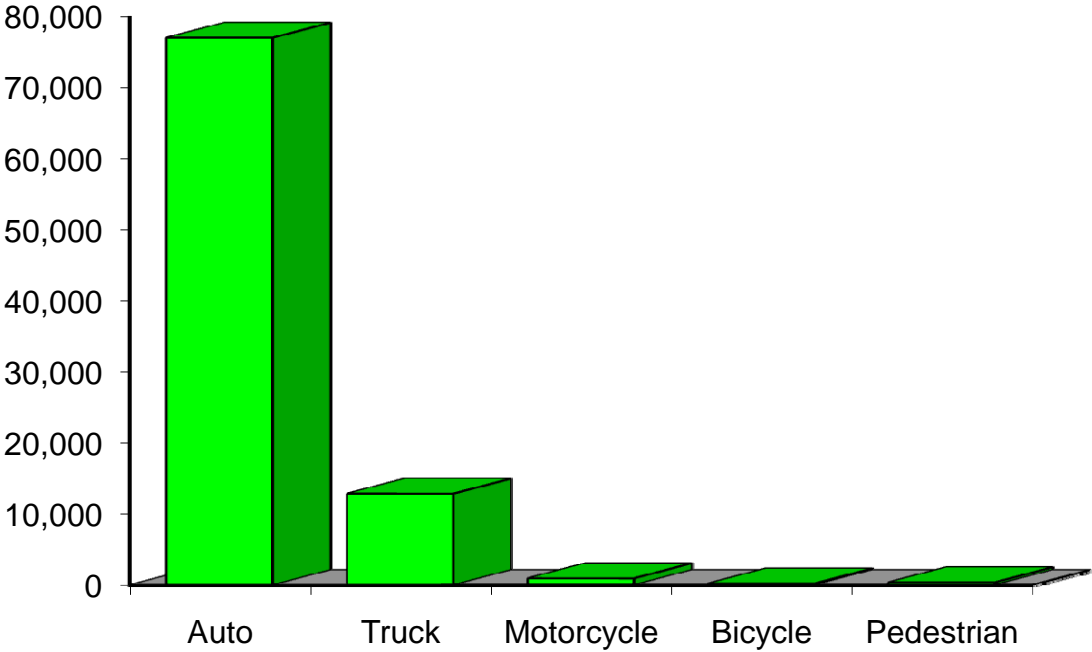
Indicates a value < 6

**Residents of Waukesha County
Motor Vehicle Crash Deaths
2003-2007**

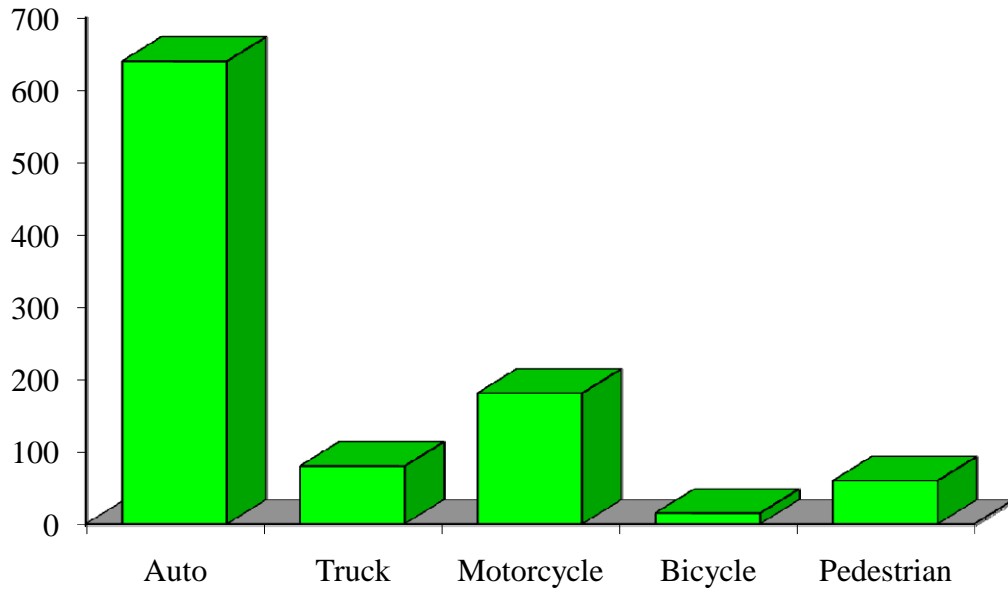
	Auto	Truck	Motorcycle	Bicycle	Pedestrian	Total
2003	19			0		32
2004	13			0		21
2005	23					35
2006	20	0		0		25
2007	23		8	0		36
Five-Year Total	98	12	26		12	149

Indicates a value < 6

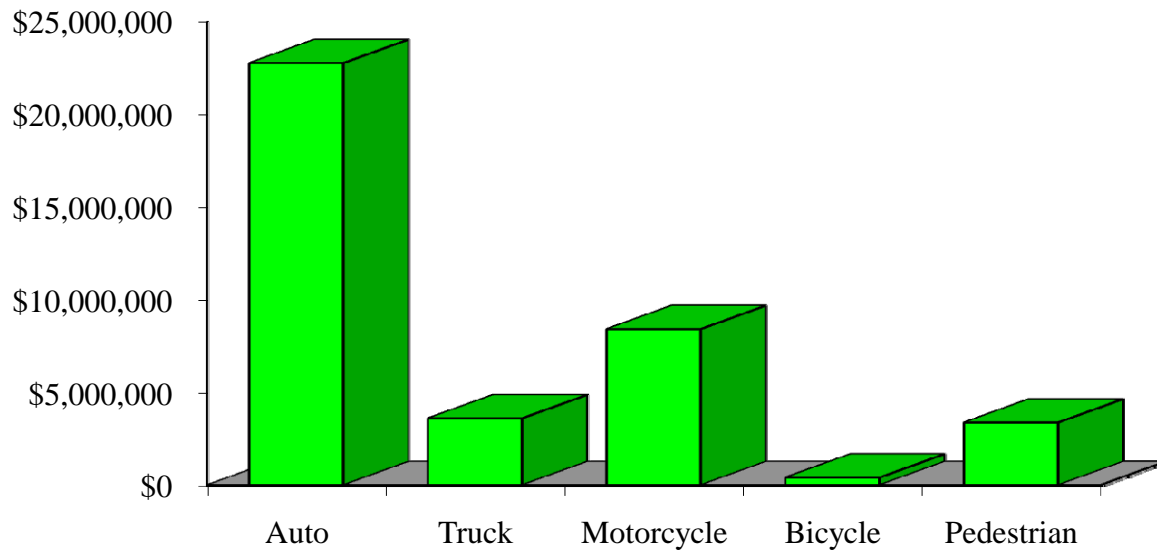
Crash Occupants by Vehicle Type Residents of Waukesha County, 2003-2007



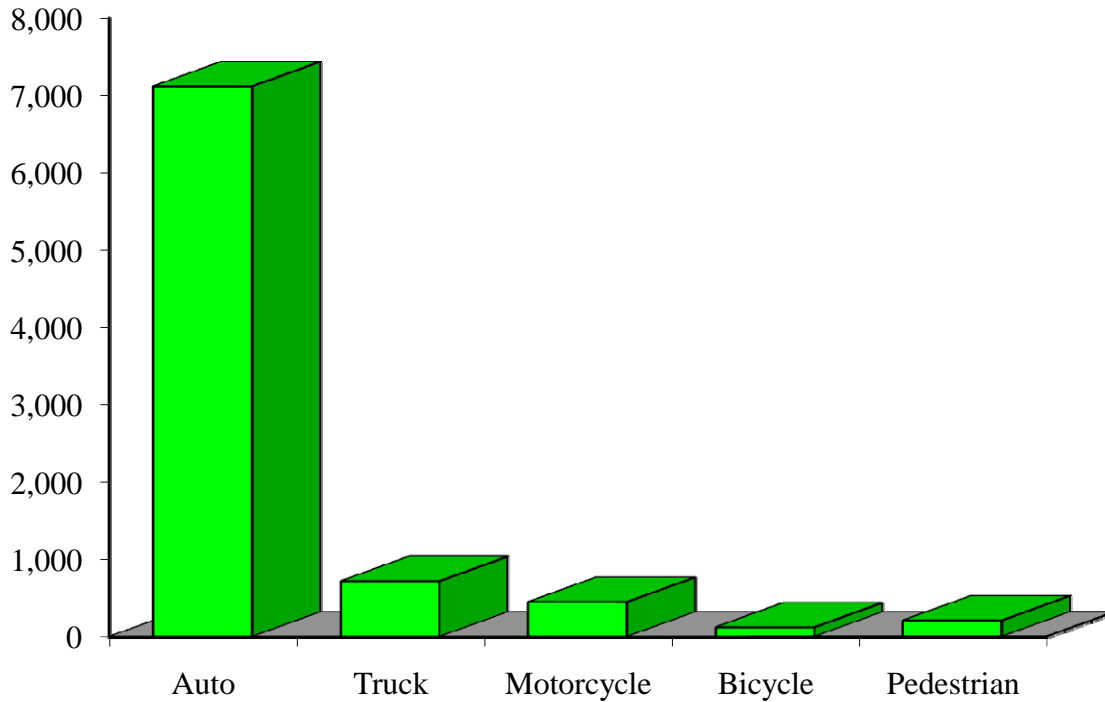
Hospitalizations by Vehicle Type Residents of Waukesha County, 2003-2007



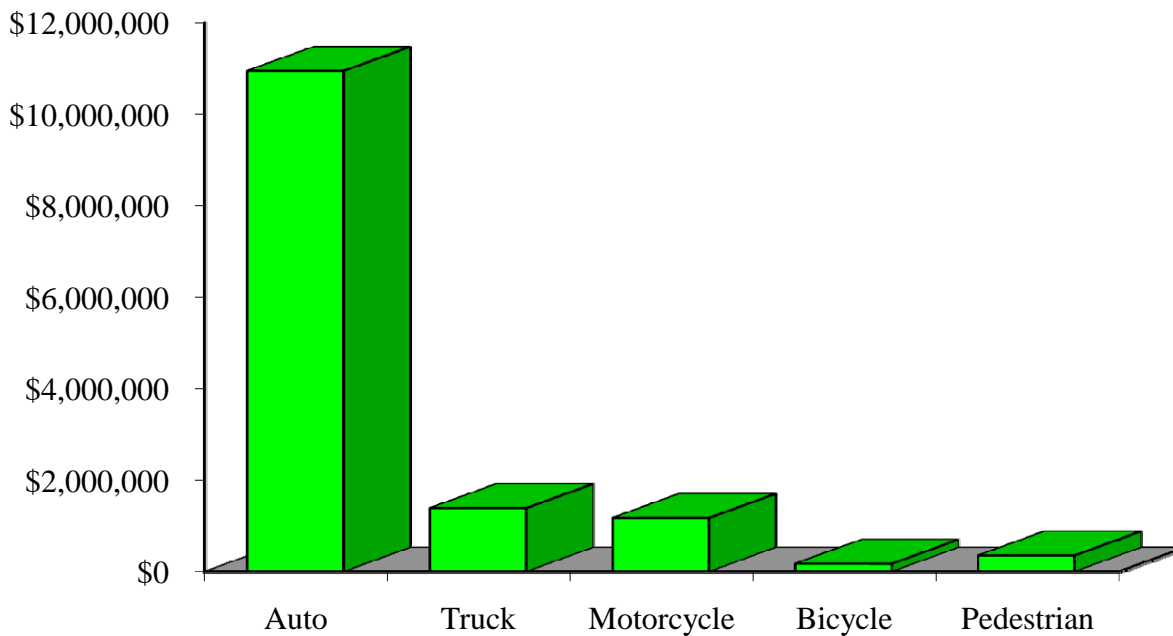
Hospital Charges by Vehicle Type Residents of Waukesha County, 2003-2007



Emergency Room Visits by Vehicle Type Residents of Waukesha County, 2003-2007



Emergency Room Charges by Vehicle Type Residents of Waukesha County, 2003-2007



Residents of Waukesha County and All Wisconsin 'Crash Occupants'

Crash Involvement Rates and Costs

2003-2007

	2003	2004	2005	2006	2007	Average
--	-------------	-------------	-------------	-------------	-------------	----------------

Annual Crash Involvement

<i>Waukesha County</i>						
Crash Occupants	18,673	18,538	18,426	17,060	18,760	18,291
<i>Rate per 1,000 Residents</i>	52.1	51.8	51.4	47.6	52.4	51.1

<i>State of Wisconsin</i>						
Crash Occupants	316,298	307,373	305,007	286,608	300,270	303,111
<i>Rate per 1,000 Residents</i>	57.0	55.4	55.0	51.6	54.1	54.6

Annual Crash-Related Hospitalizations

<i>Waukesha County</i>						
Crash-Related Hospitalizations	184	189	213	202	188	195
<i>Rate per 100,000 Residents*</i>	51.4	52.8	59.5	56.4	52.5	54.5

<i>State of Wisconsin</i>						
Crash-Related Hospitalizations	4,234	3,983	4,232	4,253	4,146	4,170
<i>Rate per 100,000 Residents*</i>	76.3	71.8	76.3	76.6	74.7	75.1

Annual Crash-Related Hospital Charges

<i>Waukesha County</i>						
Total Crash Injury Hospital Charges	\$6,682,809	\$6,316,840	\$7,975,390	\$7,817,865	\$9,772,928	\$7,713,166
<i>Annual Charge per 1,000 Residents</i>	\$18,658	\$17,636	\$22,267	\$21,827	\$27,285	\$21,535

<i>State of Wisconsin</i>						
Total Crash Injury Hospital Charges	\$126,881,405	\$133,270,653	\$151,898,242	\$162,208,759	\$181,072,379	\$151,066,288
<i>Annual Charge per 1,000 Residents</i>	\$22,861	\$24,012	\$27,368	\$29,226	\$32,625	\$27,219

Annual Crash-Related Emergency Room Visits

<i>Waukesha County</i>						
Crash-Related Emergency Room Visits	1687	1,759	1839	1,650	1,677	1,731
<i>Rate per 100,000 Residents*</i>	471.0	491.1	513.4	460.7	468.2	483.4

<i>State of Wisconsin</i>						
Crash-Related Emergency Room Visits	31,664	31,866	33,269	31,268	30,615	\$31,755
<i>Rate per 100,000 Residents*</i>	570.5	574.1	599.4	563.4	551.6	572.1

Annual Crash-Related Emergency Room Charges

<i>Waukesha County</i>						
Total Crash Injury Emergency Room Charges	\$1,901,942	\$2,390,909	\$3,154,051	\$2,979,153	\$3,624,438	\$3,037,138
<i>Annual ER Charge per 1,000 Residents</i>	\$5,310	\$6,675	\$8,806	\$8,318	\$10,119	\$8,480

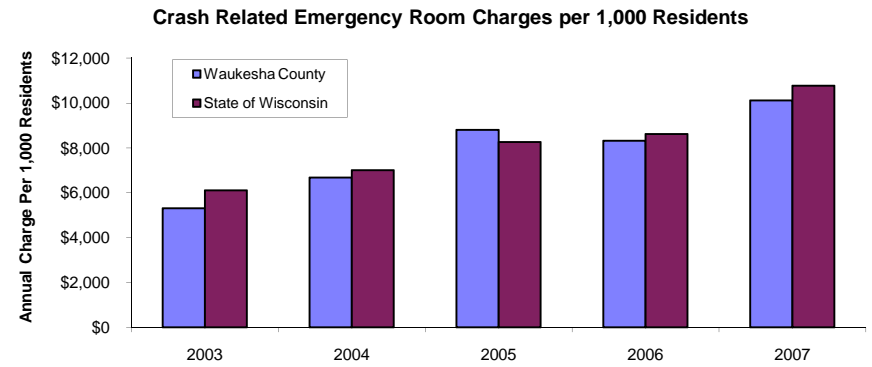
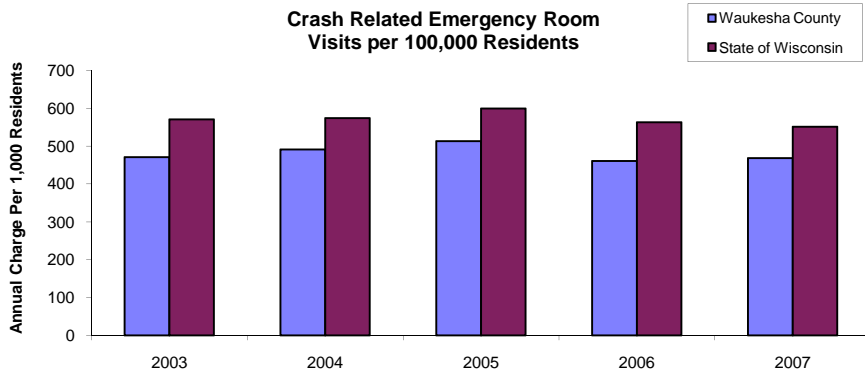
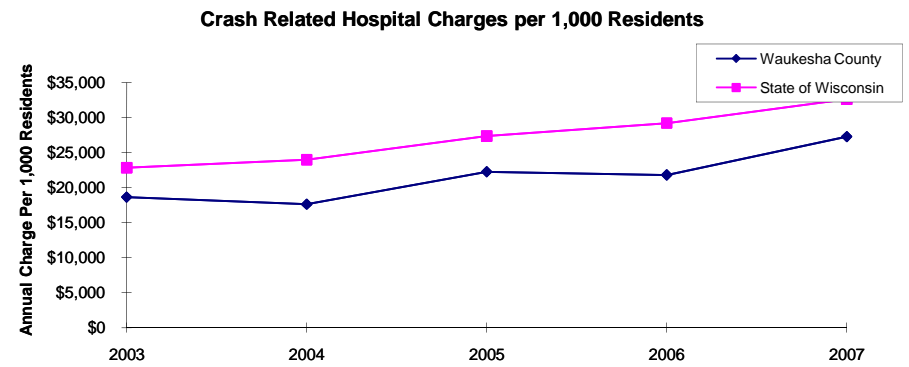
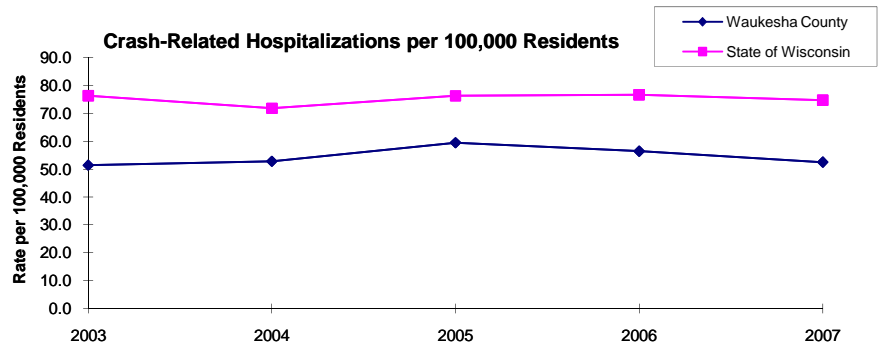
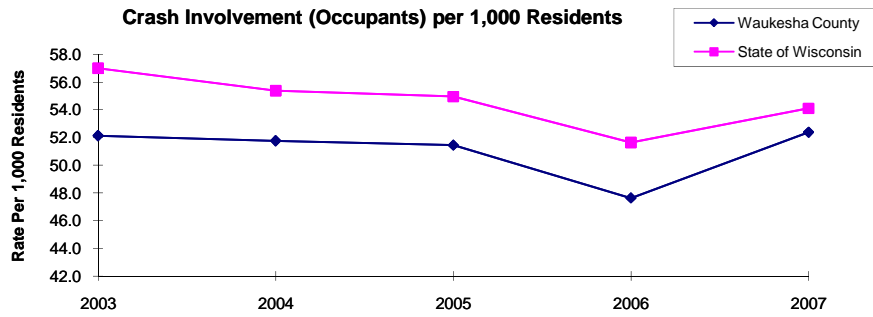
<i>State of Wisconsin</i>						
Crash Injury Emergency Room Charges	\$33,900,299	\$38,900,194	\$45,882,386	\$47,860,521	\$59,808,628	\$48,112,932
<i>Annual ER Charge per 1,000 Residents</i>	6,108	\$7,009	\$8,267	\$8,623	\$10,776	\$8,669

Average Annual Population (computed 2003-2007 population estimates)

<i>Waukesha County</i>	358,174	* Reported as a rate per 100,000 residents to better highlight
<i>State of Wisconsin</i>	5,550,118	variations: 1.12 per 1,000 = 112 per 100,000.

Population data estimates are available at the Demographic Services Center, Wisconsin Department of Administration

Residents of Waukesha County



Zipcodes included in County of Resident Reports

Residents of Waukesha County

53005	53007
53008	53018
53029	53045
53046	53051
53052	53053
53054	53055
53056	53058
53064	53066
53067	53068
53069	53072
53089	53103
53118	53119
53122	53127
53146	53149
53150	53151
53153	53183
53186	53187
53188	