

---

## Residents of Waupaca County

### Motor Vehicle Crash Occupants, Hospitalizations, Emergency Room Visits and Fatalities 2003-2007

	Auto	Truck	Motorcycle	Bicycle	Pedestrian	Total
Crash Occupants	8,585	3,036	134	21	42	11,818
Hospitalized Cases	116	42	25		11	196
Hospital Charges	\$4,674,069	\$1,551,318	\$797,685	\$18,701	\$375,850	\$7,417,623
Emergency Room Visits	948	194	54	11	19	984
Emergency Room Charges	\$1,168,039	\$225,321	\$74,629	\$6,340	\$24,511	\$1,059,198
Deaths	38	6	7	1	4	56

Indicates a value < 6

**Residents of Waupaca County  
Hospitalization Charges by Vehicle Type  
2003-2007**

	<b>Auto</b>	<b>Truck</b>	<b>Motorcycle</b>	<b>Bicycle</b>	<b>Pedestrian</b>
Hospital Charges	\$4,674,069	\$1,551,318	\$797,685	\$18,701	\$375,850
Total Crash Occupants	8,585	3,036	134	21	42
<b>Hospital Charge/Occupant</b>	\$544.45	\$510.97	\$5,952.87	\$890.52	\$8,948.81

**Hospitalization Rates by Vehicle Type  
2003-2007**

	<b>Auto</b>	<b>Truck</b>	<b>Motorcycle</b>	<b>Bicycle</b>	<b>Pedestrian</b>
Hospital Cases	116	42	25		11
Total Crash Occupants	8,585	3,036	134	21	42
<b>Hospitalization Rate/Crash Occupant</b>	1.4%	1.4%	18.7%	9.5%	26.2%

**Emergency Room Charges by Vehicle Type  
2003-2007**

	<b>Auto</b>	<b>Truck</b>	<b>Motorcycle</b>	<b>Bicycle</b>	<b>Pedestrian</b>
ER Charges	\$1,168,039	\$225,321	\$74,629	\$6,340	\$24,511
Crash Occupants	8,585	3,036	134	21	42
<b>Emergency Room Charges/Crash Occupant</b>	\$136	\$74	\$557	\$302	\$584

**Emergency Room Visits by Vehicle Type  
2003-2007**

	<b>Auto</b>	<b>Truck</b>	<b>Motorcycle</b>	<b>Bicycle</b>	<b>Pedestrian</b>
Emergency Room Visits	948	194	54	11	19
Total Crash Occupants	8,585	3,036	134	21	42
<b>Emergency Room Rate/Crash Occupant</b>	11.0%	6.4%	40.3%	52.4%	45.2%

Indicates a value < 4

**Residents of Waupaca County  
Occupants of Motor Vehicle Crashes  
2003-2007**

	<b>Auto</b>	<b>Truck</b>	<b>Motorcycle</b>	<b>Bicycle</b>	<b>Pedestrian</b>	<b>Total</b>
2003	1,929	684	23		12	2,653
2004	1,657	661	29		11	2,364
2005	1,834	595	17			2,455
2006	1,571	537	30			2,147
2007	1,594	559	35		9	2,199
Five-Year Total	8,585	3,036	134	21	42	11,818

Indicates a value < 6

**Residents of Waupaca County  
Motor Vehicle Crash Hospitalizations, Hospital Charges and Emergency Room Visits and Charges  
2003-2007**

	<b>Auto</b>	<b>Truck</b>	<b>Motorcycle</b>	<b>Bicycle</b>	<b>Pedestrian</b>	<b>Total</b>
<b>2003</b>						
Number of Cases	30	7				44
Total Charges	\$681,784	\$407,935	\$182,959	\$6,398	\$122,366	\$1,401,442
<b>2004</b>						
Number of Cases	19	13		0		40
Total Charges	\$1,199,500	\$405,794	\$243,560	\$0	\$90,292	\$1,939,146
<b>2005</b>						
Number of Cases	25					36
Total Charges	\$1,227,342	\$91,589	\$75,811	\$12,303	\$8,932	\$1,415,977
<b>2006</b>						
Number of Cases	21	11		0	0	38
Total Charges	\$460,032	\$282,763	\$75,243	\$0	\$0	\$818,038
<b>2007</b>						
Number of Cases	21	7		0		38
Total Charges	\$1,105,411	\$363,237	\$220,112	\$0	\$154,260	\$1,843,020
<b>Five-YearTotal</b>						
Number of Cases	116	42	25		11	196
Total Charges	\$4,674,069	\$1,551,318	\$797,685	\$18,701	\$375,850	\$7,417,623

**Motor Vehicle Crash Emergency Room Visits and Charges  
2003-2007**

	<b>Auto</b>	<b>Truck</b>	<b>Motorcycle</b>	<b>Bicycle</b>	<b>Pedestrian</b>	<b>Total</b>
<b>2003</b>						
Number of Cases	192	51	8			258
Total Charges	\$139,028	\$34,911	\$8,895	\$1,441	\$4,317	\$188,592
<b>2004</b>						
Number of Cases	207	39	9			265
Total Charges	\$214,504	\$43,209	\$8,737	\$2,188	\$8,662	\$277,300
<b>2005</b>						
Number of Cases	190	35	9			238
Total Charges	\$237,720	\$40,778	\$11,251	\$185	\$5,179	\$295,113
<b>2006</b>						
Number of Cases	177	28	12			223
Total Charges	\$227,793	\$40,216	\$21,308	\$2,526	\$6,350	\$298,193
<b>2007</b>						
Number of Cases	182	41	16	0		242
Total Charges	\$348,994	\$66,207	\$24,438	\$0		\$439,642
<b>Five -Year Total</b>						
Number of Cases	948	194	54	11	19	984
Total Charges	\$1,168,039	\$225,321	\$74,629	\$6,340	\$24,511	\$1,059,198

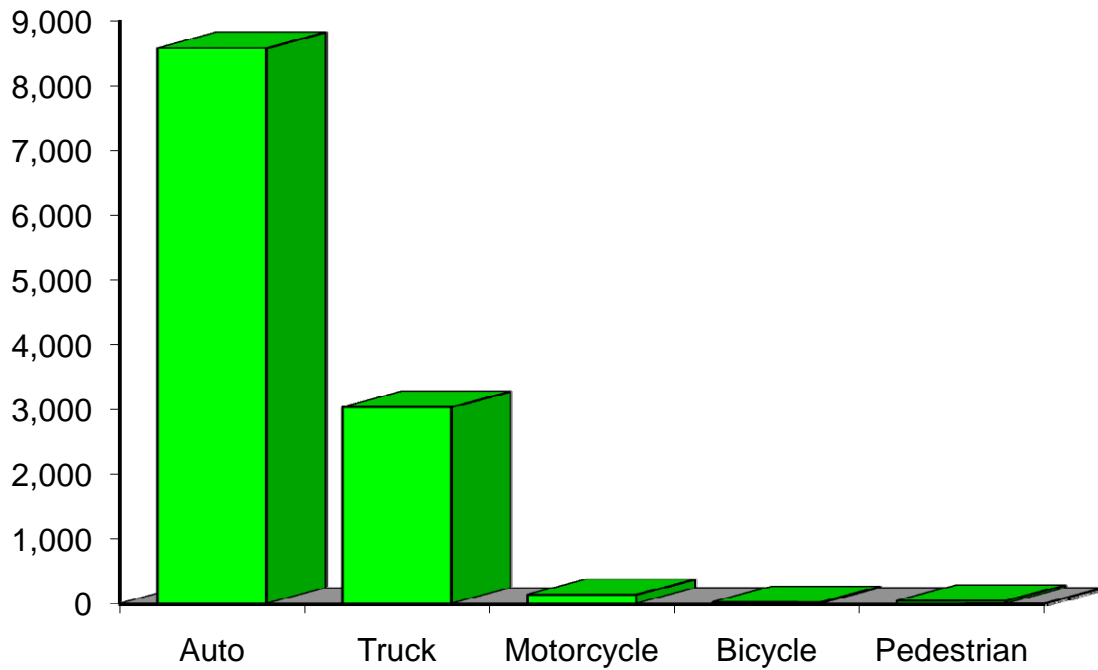
Indicates a value < 6

**Residents of Waupaca County  
Motor Vehicle Crash Deaths  
2003-2007**

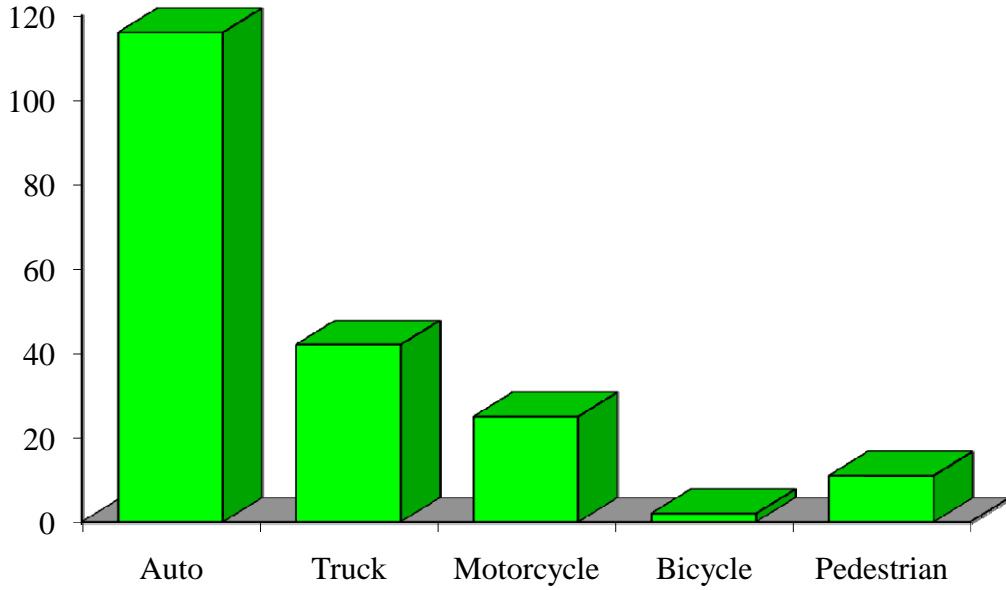
	<b>Auto</b>	<b>Truck</b>	<b>Motorcycle</b>	<b>Bicycle</b>	<b>Pedestrian</b>	<b>Total</b>
2003	12			0	0	15
2004	9		0	0		15
2005	7	0			0	9
2006	7	0		0		9
2007				0	0	8
Five-Year Total	38		7			56

Indicates a value < 6

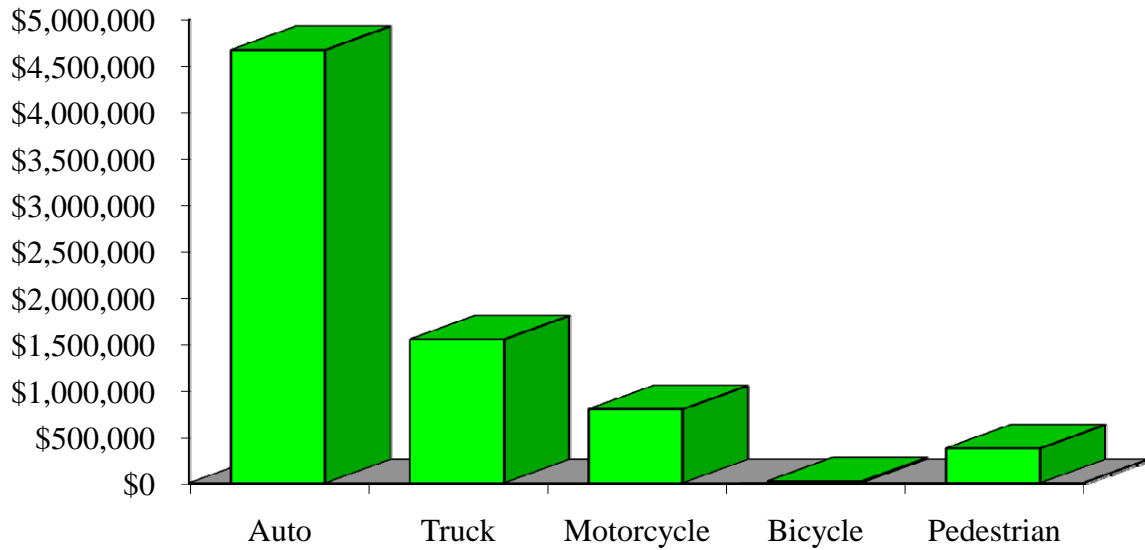
## Crash Occupants by Vehicle Type Residents of Waupaca County, 2003-2007



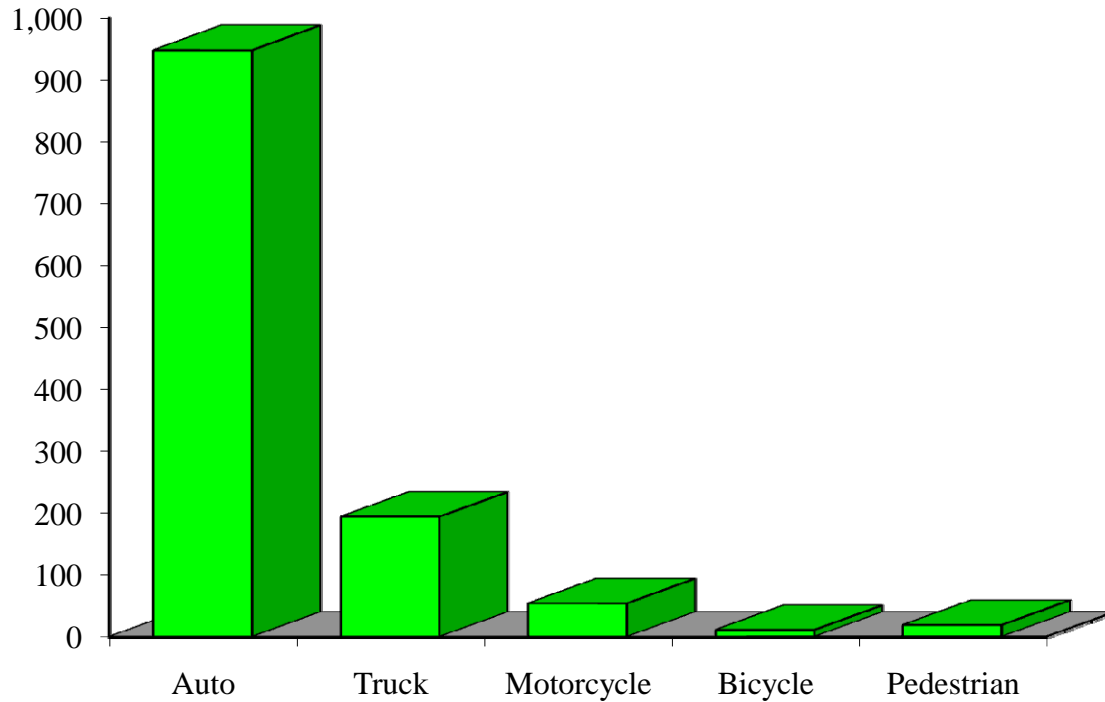
### Hospitalizations by Vehicle Type Residents of Waupaca County, 2003-2007



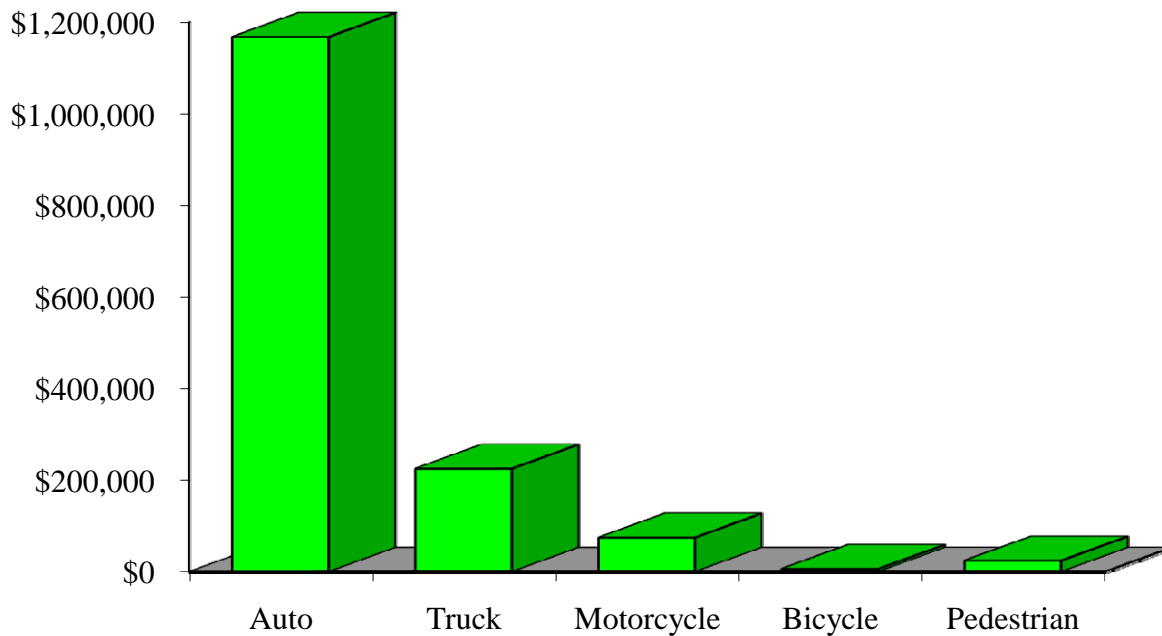
### Hospital Charges by Vehicle Type Residents of Waupaca County, 2003-2007



### Emergency Room Visits by Vehicle Type Residents of Waupaca County, 2003-2007



### Emergency Room Charges by Vehicle Type Residents of Waupaca County, 2003-2007



**Residents of Waupaca County and All Wisconsin 'Crash Occupants'**

**Crash Involvement Rates and Costs**

**2003-2007**

	<b>2003</b>	<b>2004</b>	<b>2005</b>	<b>2006</b>	<b>2007</b>	<b>Average</b>
--	-------------	-------------	-------------	-------------	-------------	----------------

**Annual Crash Involvement**

<i>Waupaca County</i>						
Crash Occupants	2,653	2,364	2,455	2,147	2,199	2,364
<i>Rate per 1,000 Residents</i>	56.6	50.5	52.4	45.8	46.9	50.4

*State of Wisconsin*

Crash Occupants	316,298	307,373	305,007	286,608	300,270	303,111
<i>Rate per 1,000 Residents</i>	57.0	55.4	55.0	51.6	54.1	54.6

**Annual Crash-Related Hospitalizations**

<i>Waupaca County</i>						
Crash-Related Hospitalizations	44	40	36	38	38	39
<i>Rate per 100,000 Residents*</i>	93.9	85.4	76.8	81.1	81.1	83.7

*State of Wisconsin*

Crash-Related Hospitalizations	4,234	3,983	4,232	4,253	4,146	4,170
<i>Rate per 100,000 Residents*</i>	76.3	71.8	76.3	76.6	74.7	75.1

**Annual Crash-Related Hospital Charges**

<i>Waupaca County</i>						
Total Crash Injury Hospital Charges	\$1,401,442	\$1,939,146	\$1,415,977	\$818,038	\$1,843,020	\$1,483,525
<i>Annual Charge per 1,000 Residents</i>	\$29,912	\$41,388	\$30,222	\$17,460	\$39,336	\$31,664

*State of Wisconsin*

Total Crash Injury Hospital Charges	\$126,881,405	\$133,270,653	\$151,898,242	\$162,208,759	\$181,072,379	\$151,066,288
<i>Annual Charge per 1,000 Residents</i>	\$22,861	\$24,012	\$27,368	\$29,226	\$32,625	\$27,219

**Annual Crash-Related Emergency Room Visits**

<i>Waupaca County</i>						
Crash-Related Emergency Room Visits	258	265	238	223	242	242
<i>Rate per 100,000 Residents*</i>	550.7	565.6	508.0	476.0	516.5	516.5

*State of Wisconsin*

Crash-Related Emergency Room Visits	31,664	31,866	33,269	31,268	30,615	\$31,755
<i>Rate per 100,000 Residents*</i>	570.5	574.1	599.4	563.4	551.6	572.1

**Annual Crash-Related Emergency Room Charges**

<i>Waupaca County</i>						
Total Crash Injury Emergency Room Charges	\$188,592	\$277,300	\$295,113	\$298,193	\$439,642	\$327,562
<i>Annual ER Charge per 1,000 Residents</i>	\$4,025	\$5,919	\$6,299	\$6,364	\$9,383	\$6,991

*State of Wisconsin*

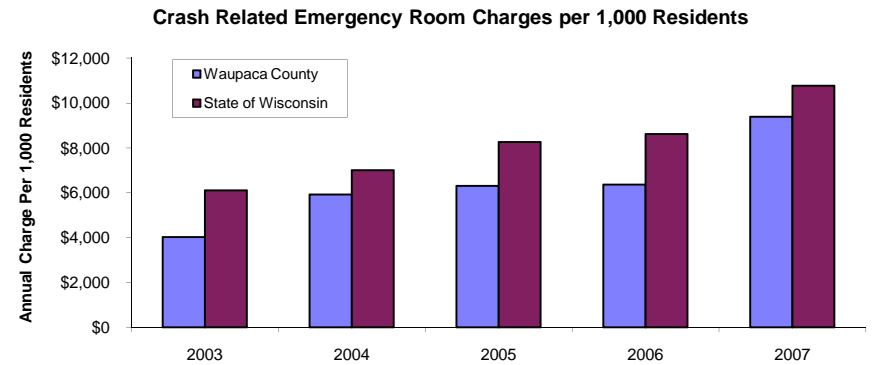
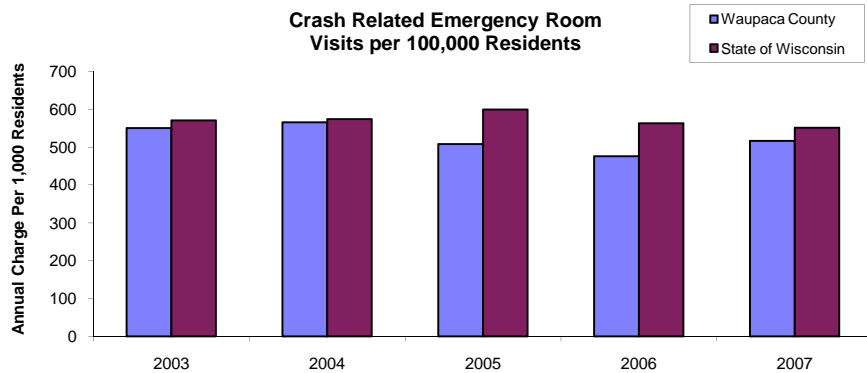
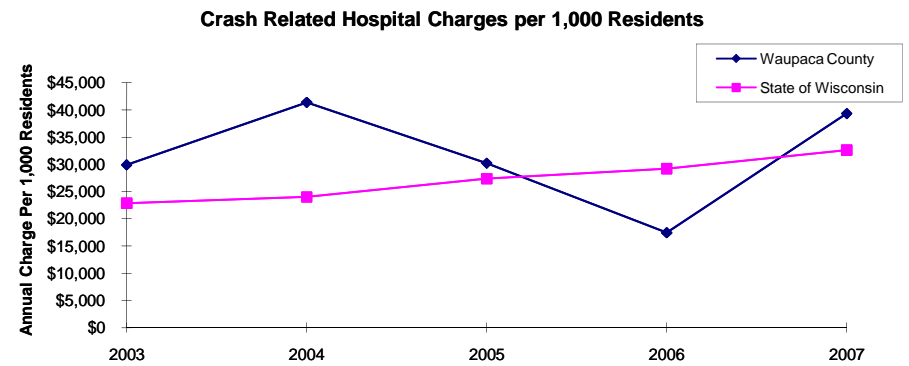
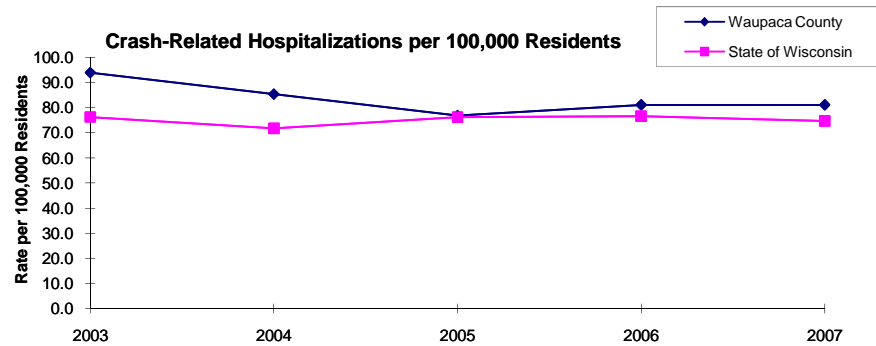
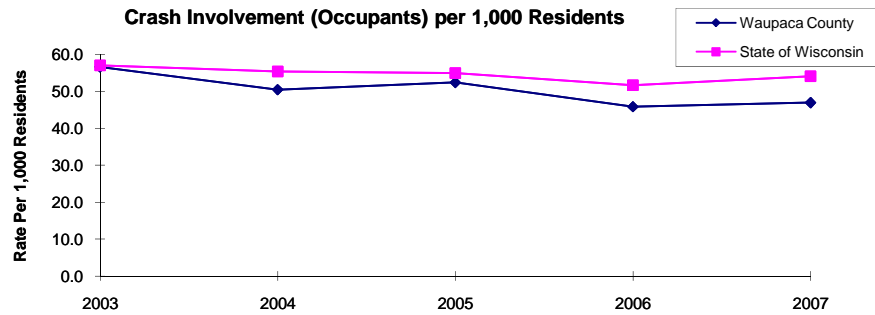
Crash Injury Emergency Room Charges	\$33,900,299	\$38,900,194	\$45,882,386	\$47,860,521	\$59,808,628	\$48,112,932
<i>Annual ER Charge per 1,000 Residents</i>	6,108	\$7,009	\$8,267	\$8,623	\$10,776	\$8,669

**Average Annual Population (computed 2003-2007 population estimates)**

<i>Waupaca County</i>	46,853	* Reported as a rate per 100,000 residents to better highlight
<i>State of Wisconsin</i>	5,550,118	variations: 1.12 per 1,000 = 112 per 100,000.

Population data estimates are available at the Demographic Services Center, Wisconsin Department of Administration

## Residents of Waupaca County



Zipcodes included in County of Resident Reports

**Residents of Waupaca County**

54926	54929
54933	54940
54945	54946
54949	54950
54962	54969
54975	54977
54981	54983
54990	