

# **Motorcycle Crashes in Wisconsin, 1994-1998**

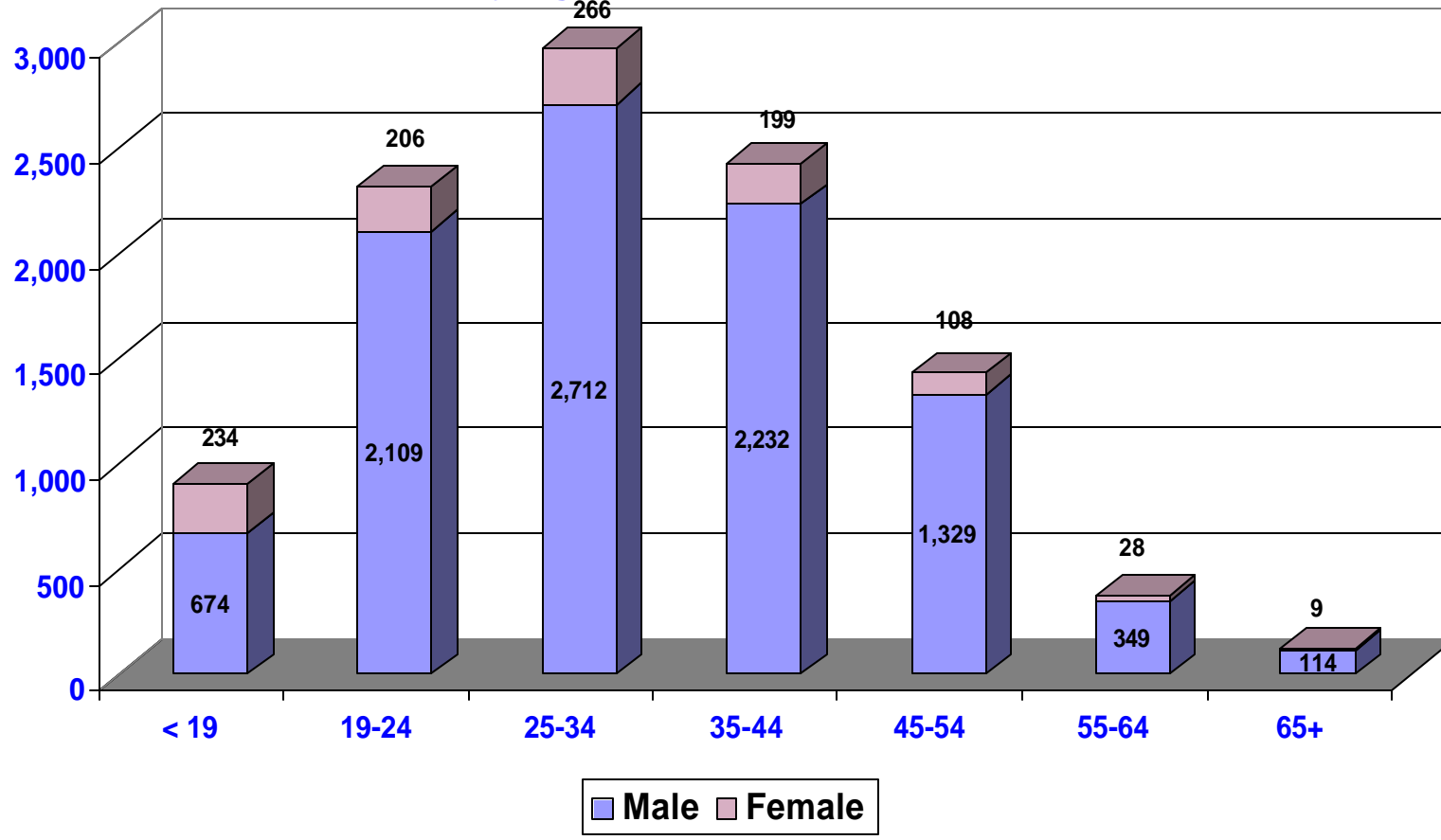
Wayne Bigelow

Wisconsin CODES Project

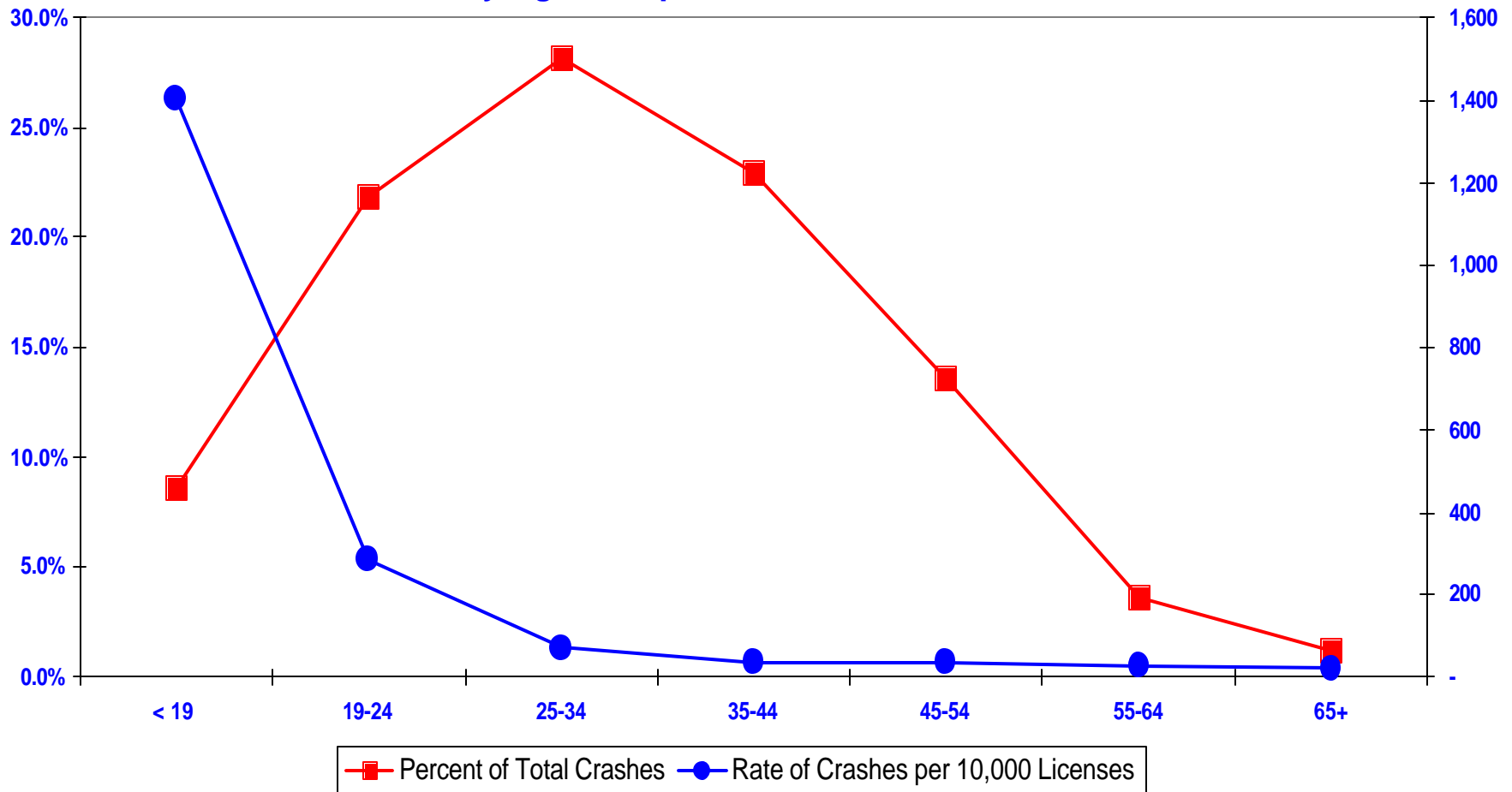
UW-Madison

April, 2001

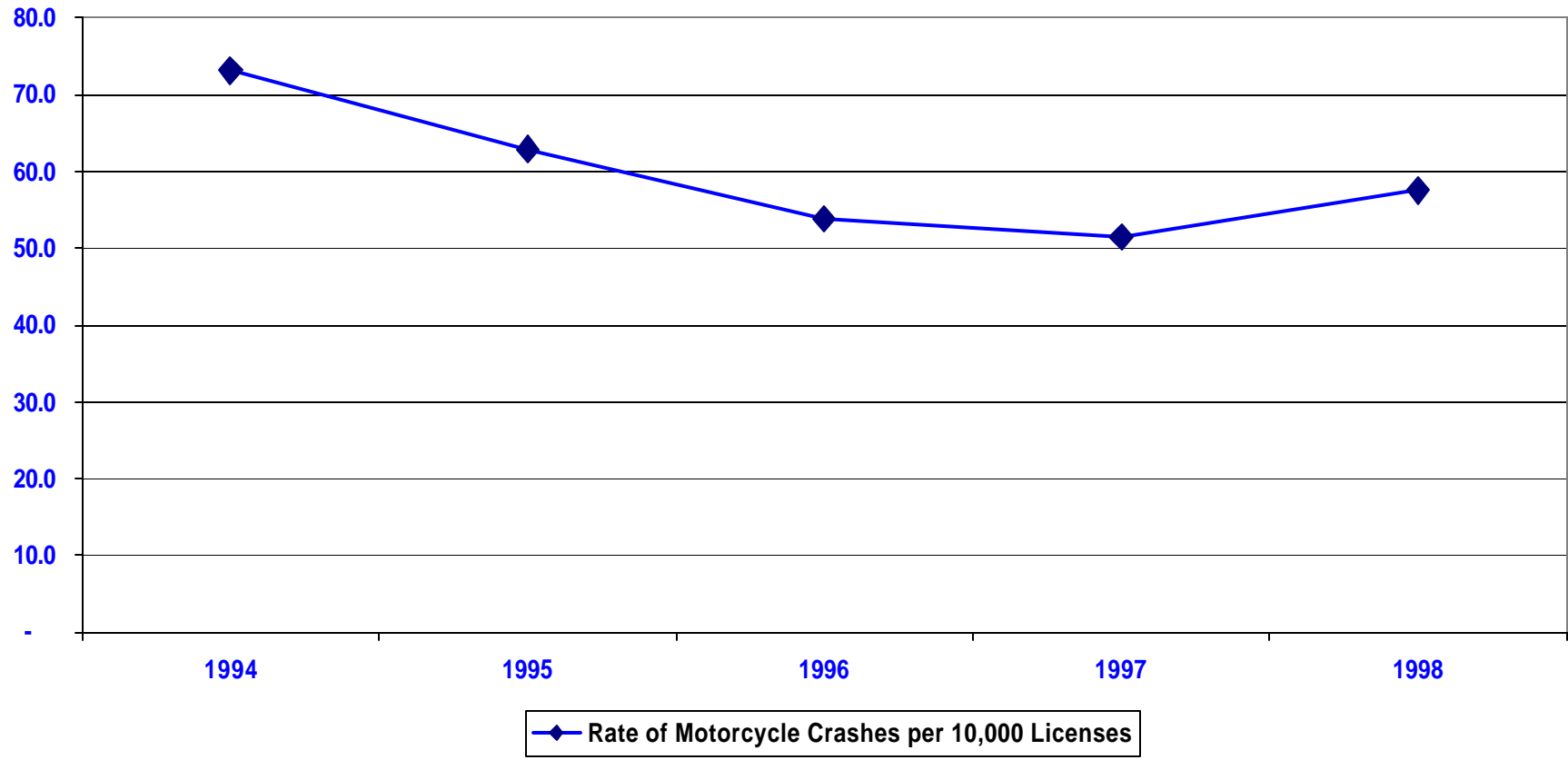
**Graph 1.**  
**Number of Motorcycle Drivers Involved in a Crash,**  
**by Age and Sex, Wisconsin, 1994-1998**



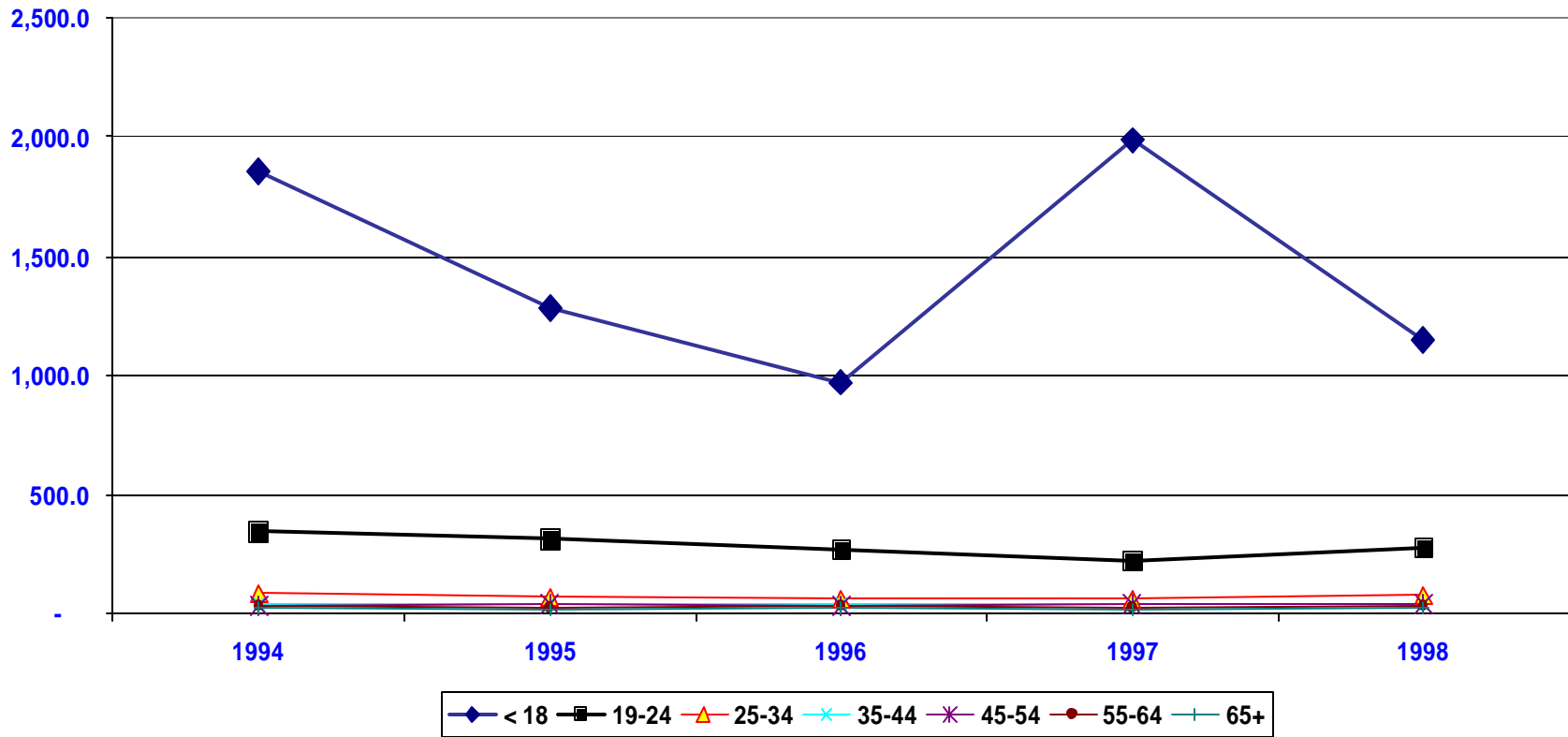
**Graph 2.**  
**Percent of Total Crashes and Rate of Crashes per 10,000 Licenses,**  
**by Age Group, Wisconsin, 1994-1998**



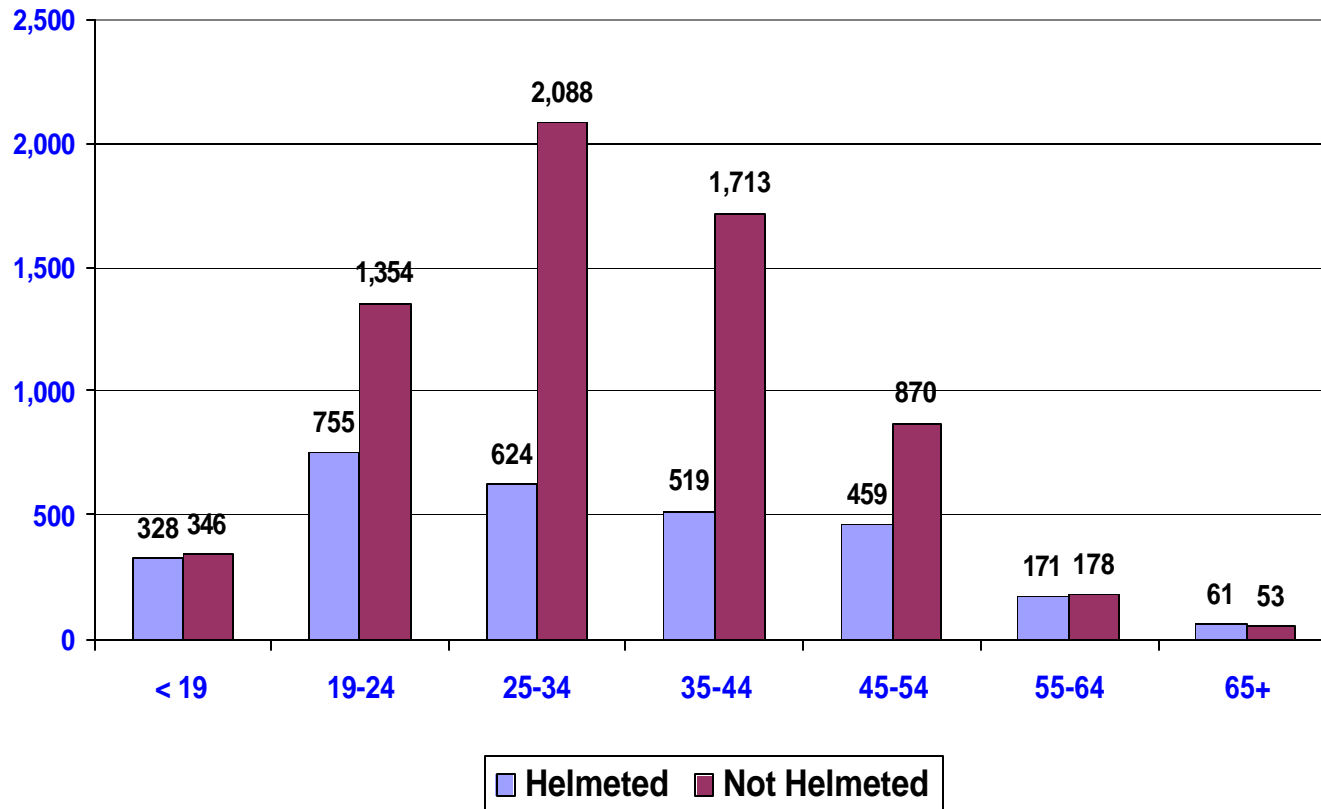
**Graph 3.**  
**Rate of Motorcycle Crashes per 10,000 Licenses,**  
**by Year, Wisconsin, 1994-1998**



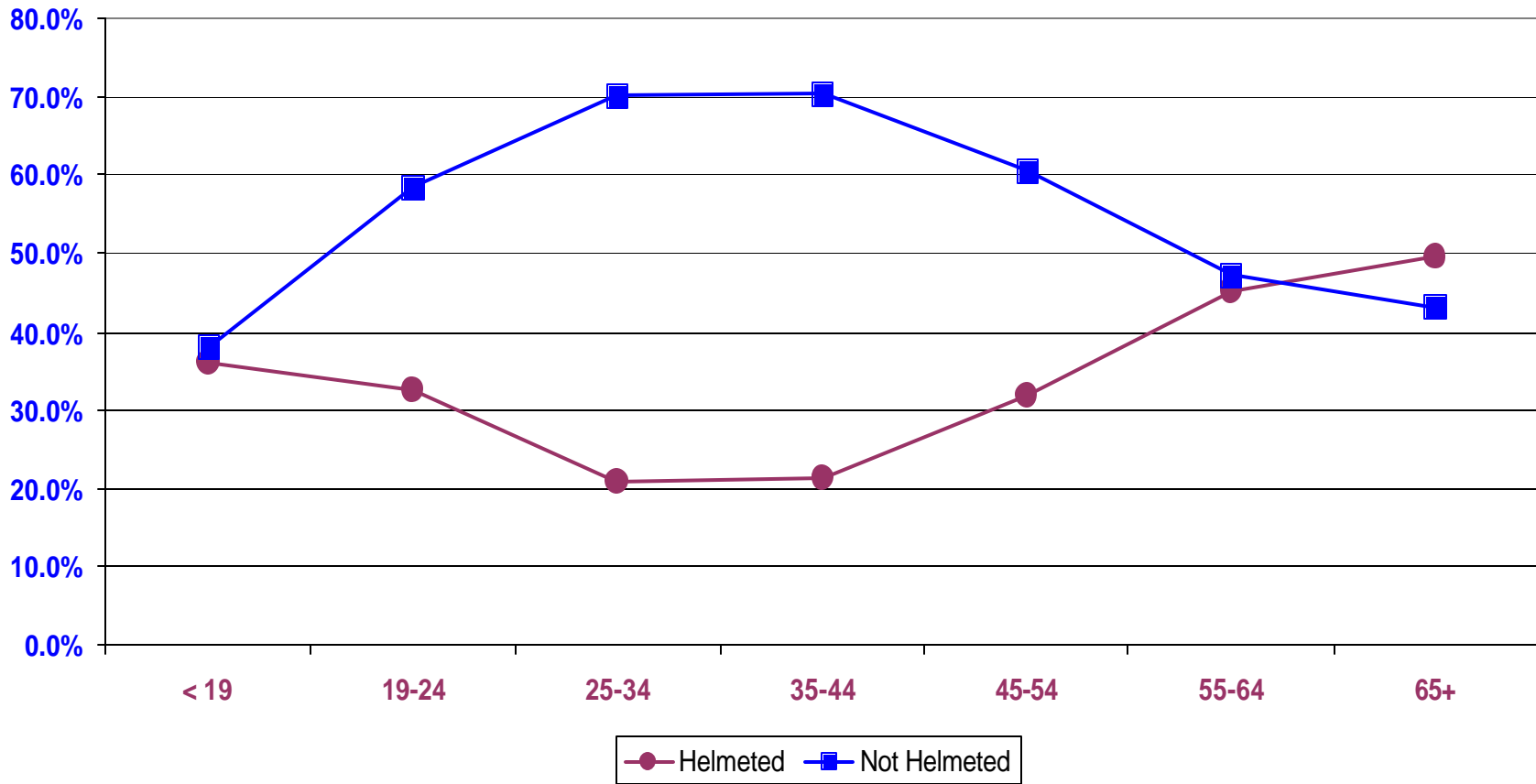
**Graph 4.**  
**Rate of Motorcycle Crashes per 10,000 Licenses,**  
**by Age Group, Wisconsin, 1994-1998**



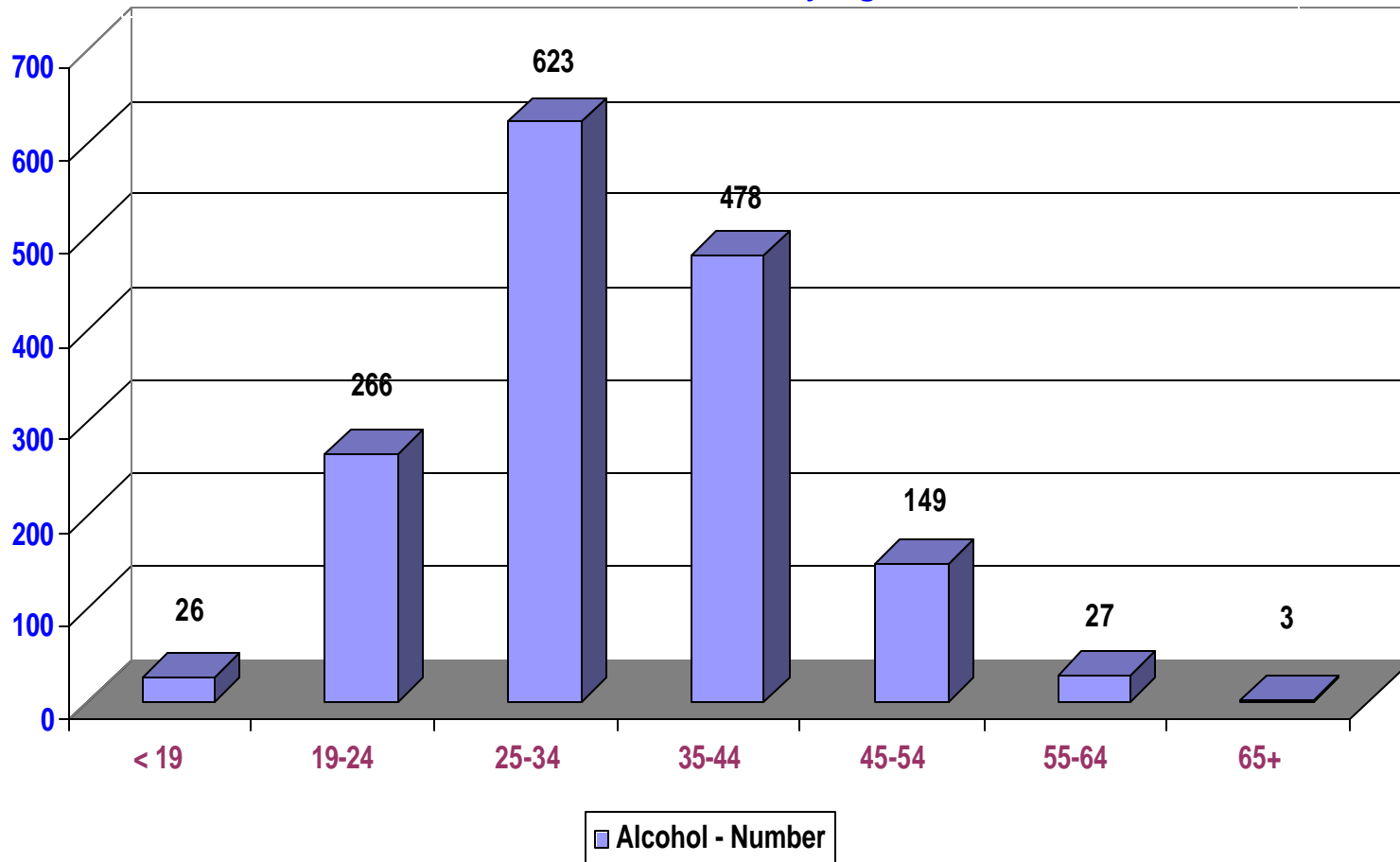
**Graph 5.**  
**Number of Motorcycle Drivers Involved in a Crash Who were Wearing a Helmet or Not, by Age, Wisconsin, 1994-1998**



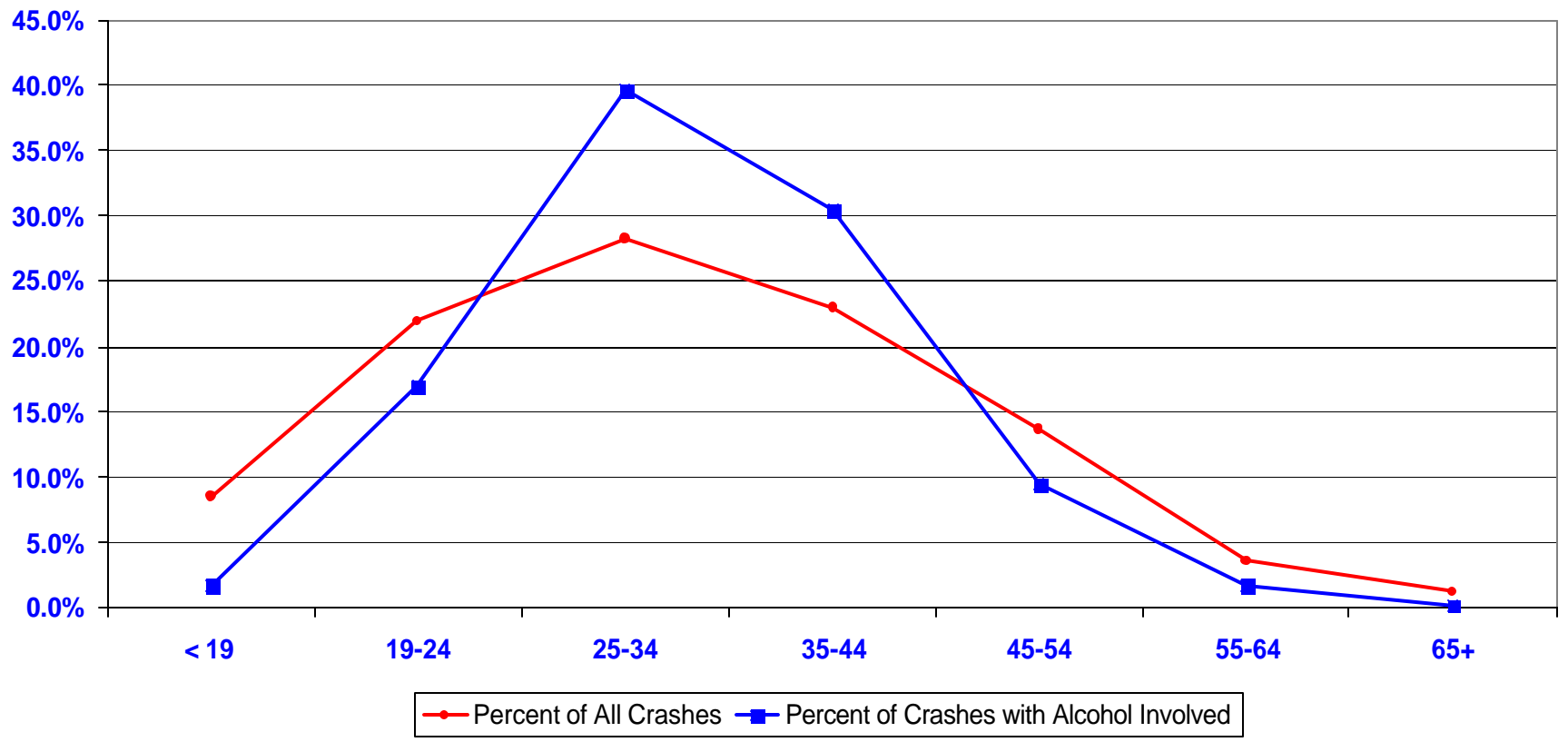
**Graph 6.**  
**Percent of Motorcycle Drivers Involved in a Crash Who were**  
**Wearing a Helmet or Not, Wisconsin, 1994-1998**



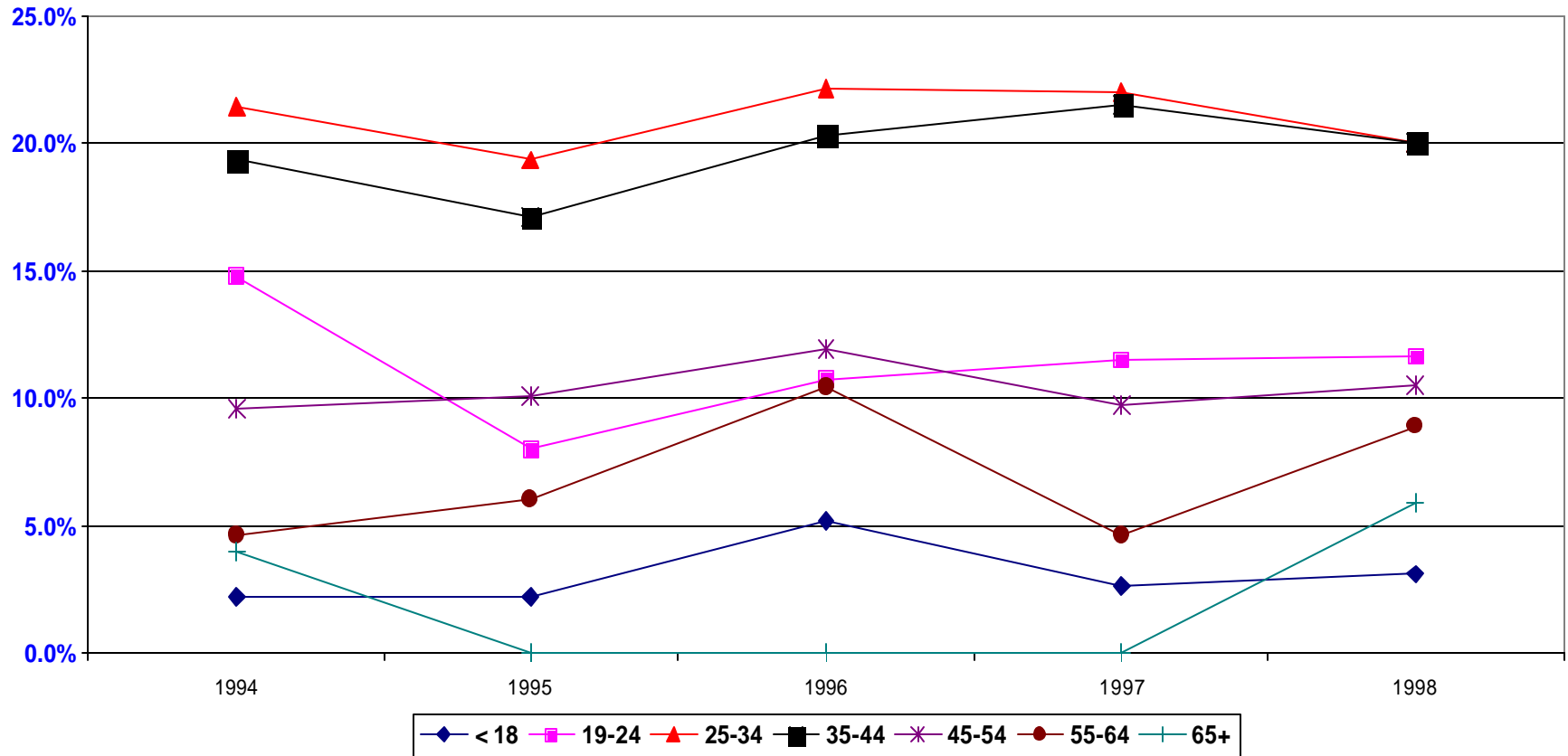
**Graph 7.**  
**Number of Motorcycle Drivers Involved in a Crash for which Police Report that Alcohol was a factor in the Crash, by Age, Wisconsin, 1994-1998**



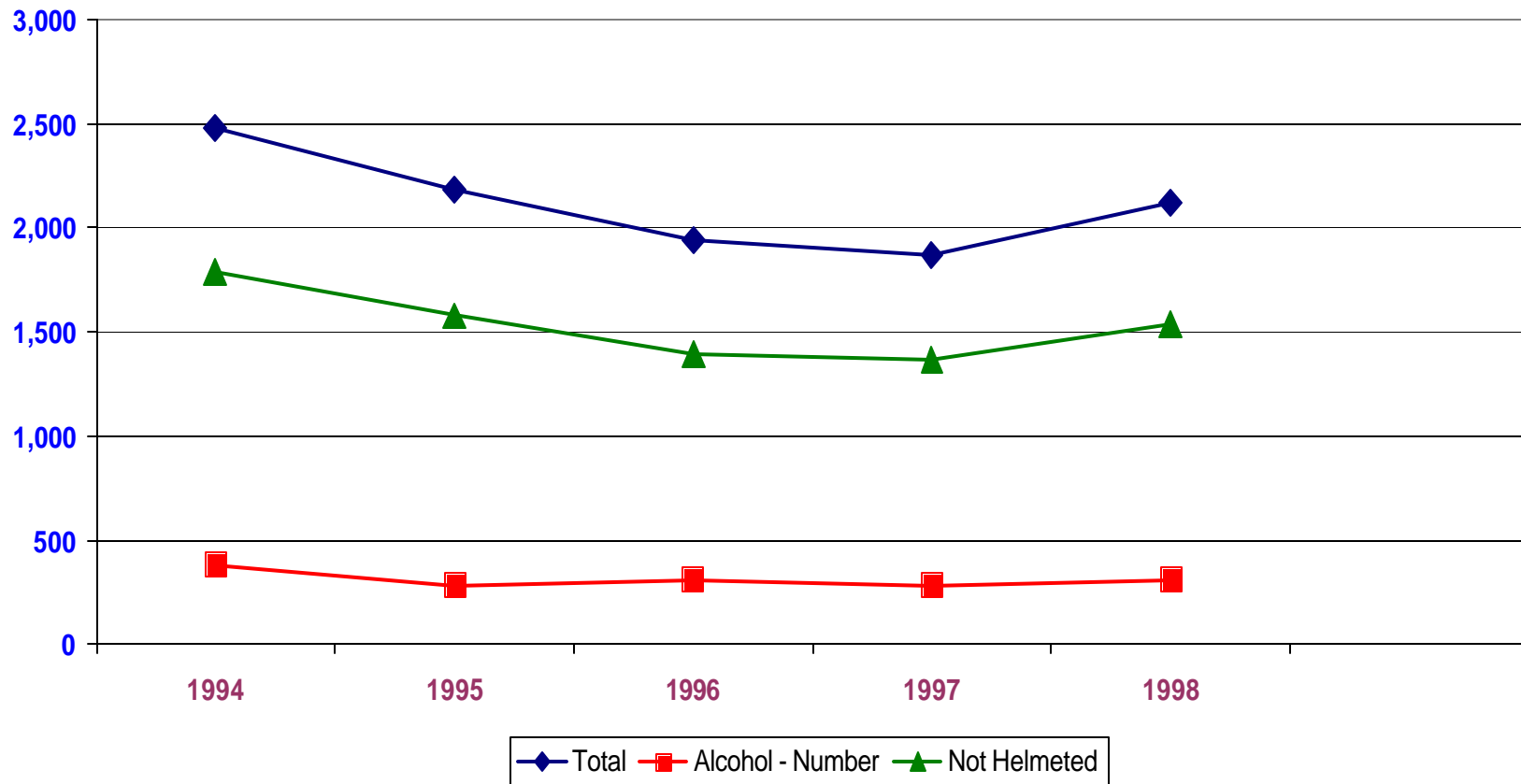
**Graph 8.**  
**Percent of Total Motorcycle Crashes and Percent of Total Motorcycle Crashes Involving Alcohol, by Age Group, Wisconsin, 1994-1998**



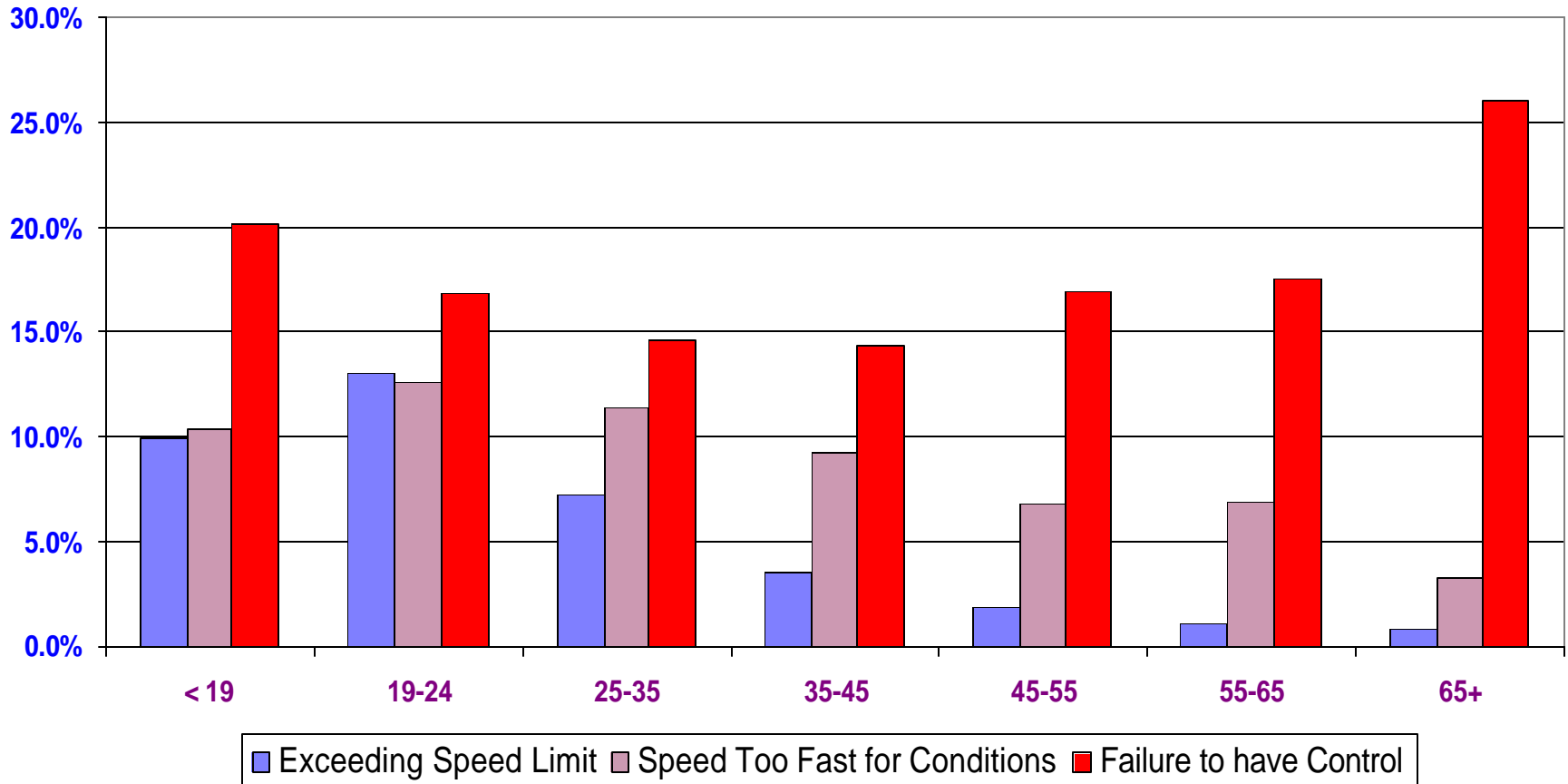
**Graph 9.**  
**Percent of Motorcycle Crashes Involving Alcohol,**  
**by Year and Age Group, Wisconsin, 1994-1998**



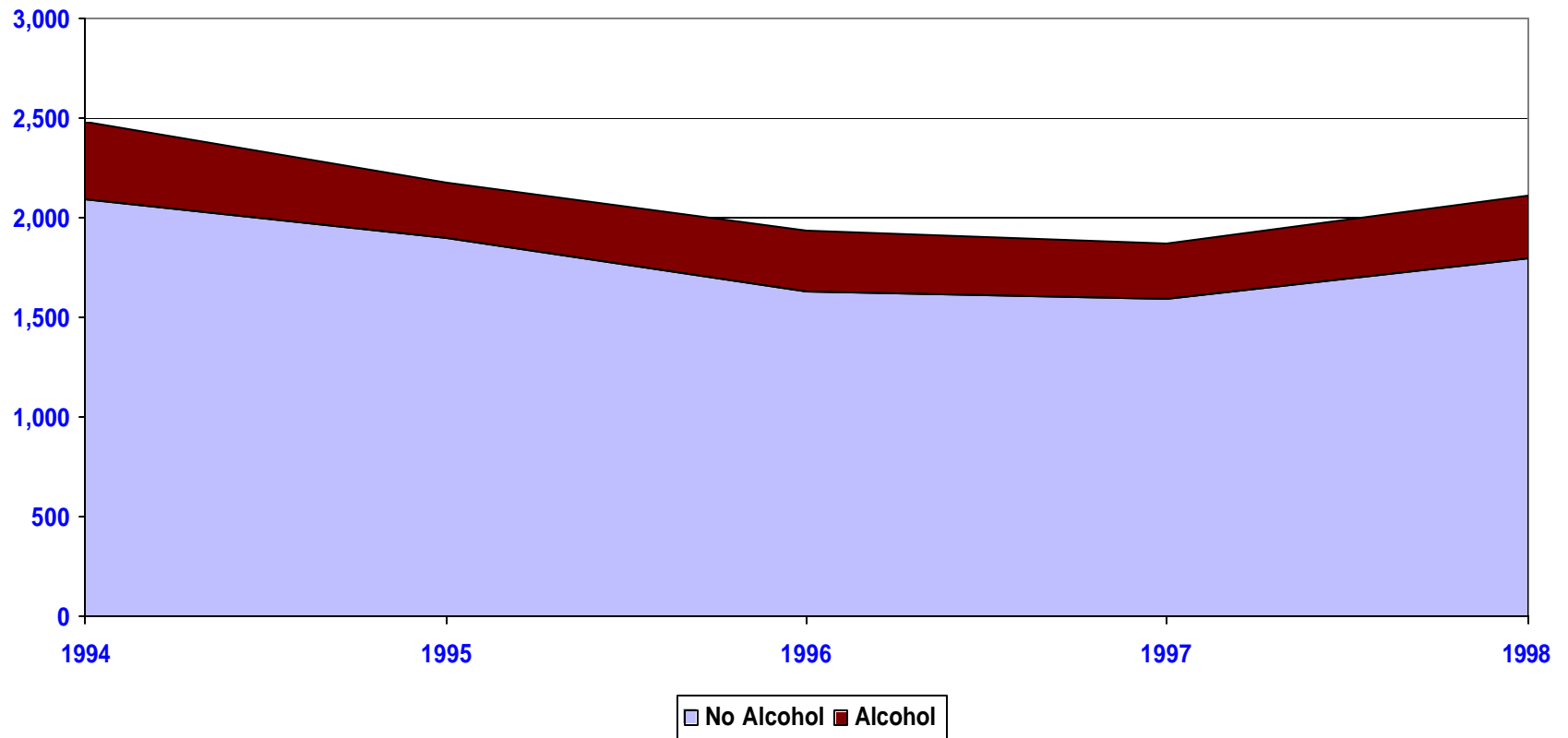
**Graph 10.**  
**Total Number of Crashes, Number of Helmeted Motorcycle Drivers and**  
**Number of Crashes Where Alcohol was a Factor in the Crash, by Year**



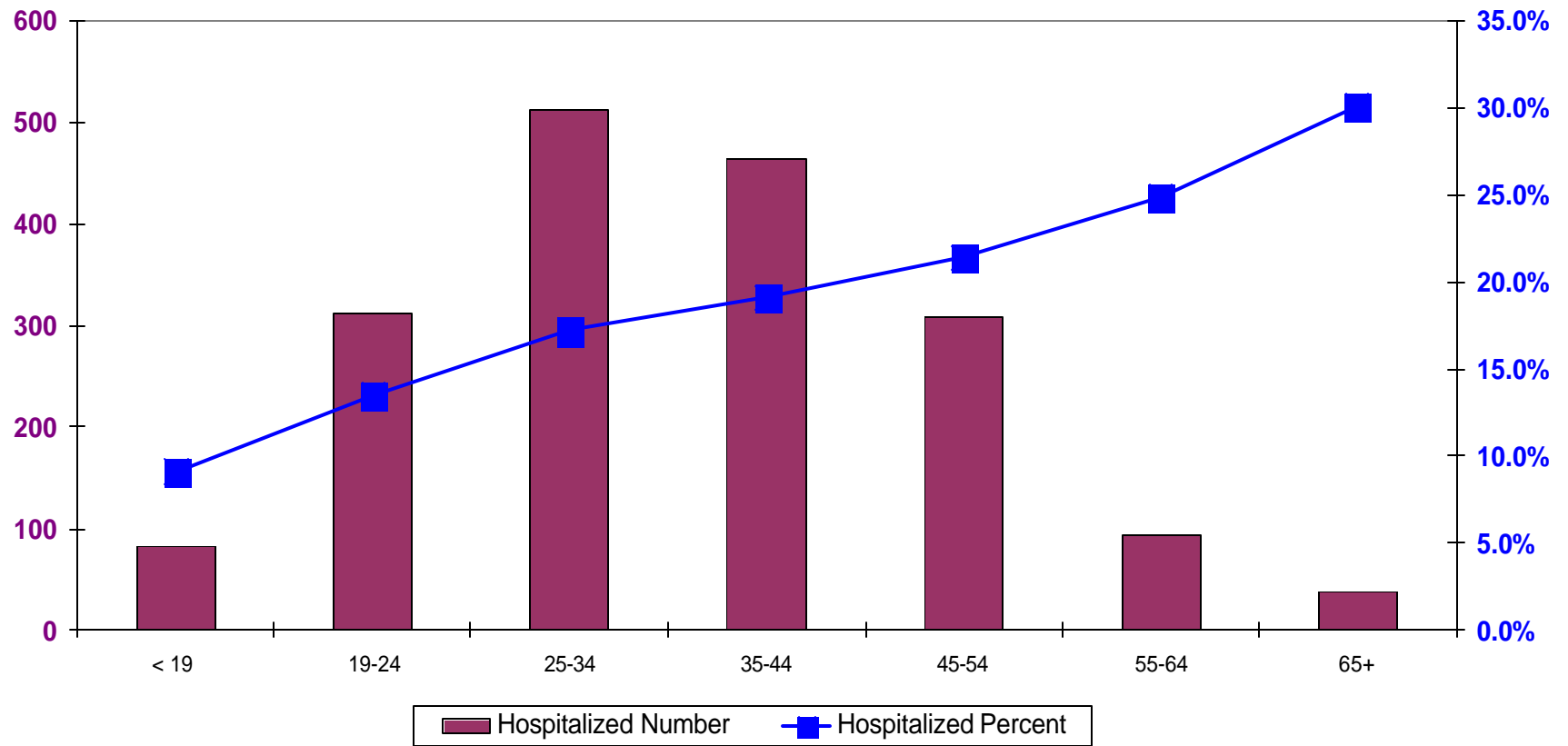
**Graph 11.**  
**Major Motorcycle Driver Related Conditions Contributory to the Crash, by Age,**  
**Wisconsin, 1994-1998**



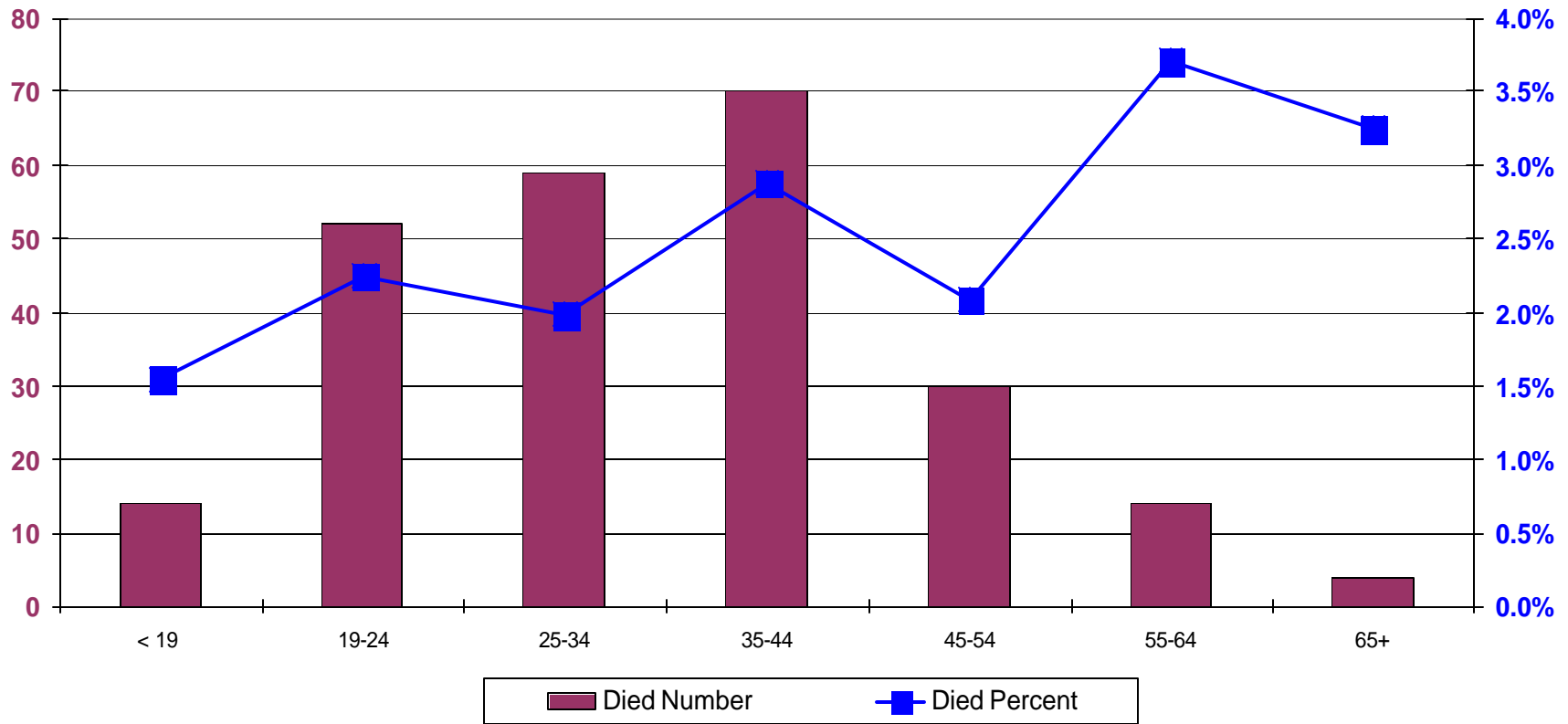
**Graph 12.**  
**Number of Motorcycle Crashes Involving Alcohol,**  
**by Year, Wisconsin, 1994-1998**



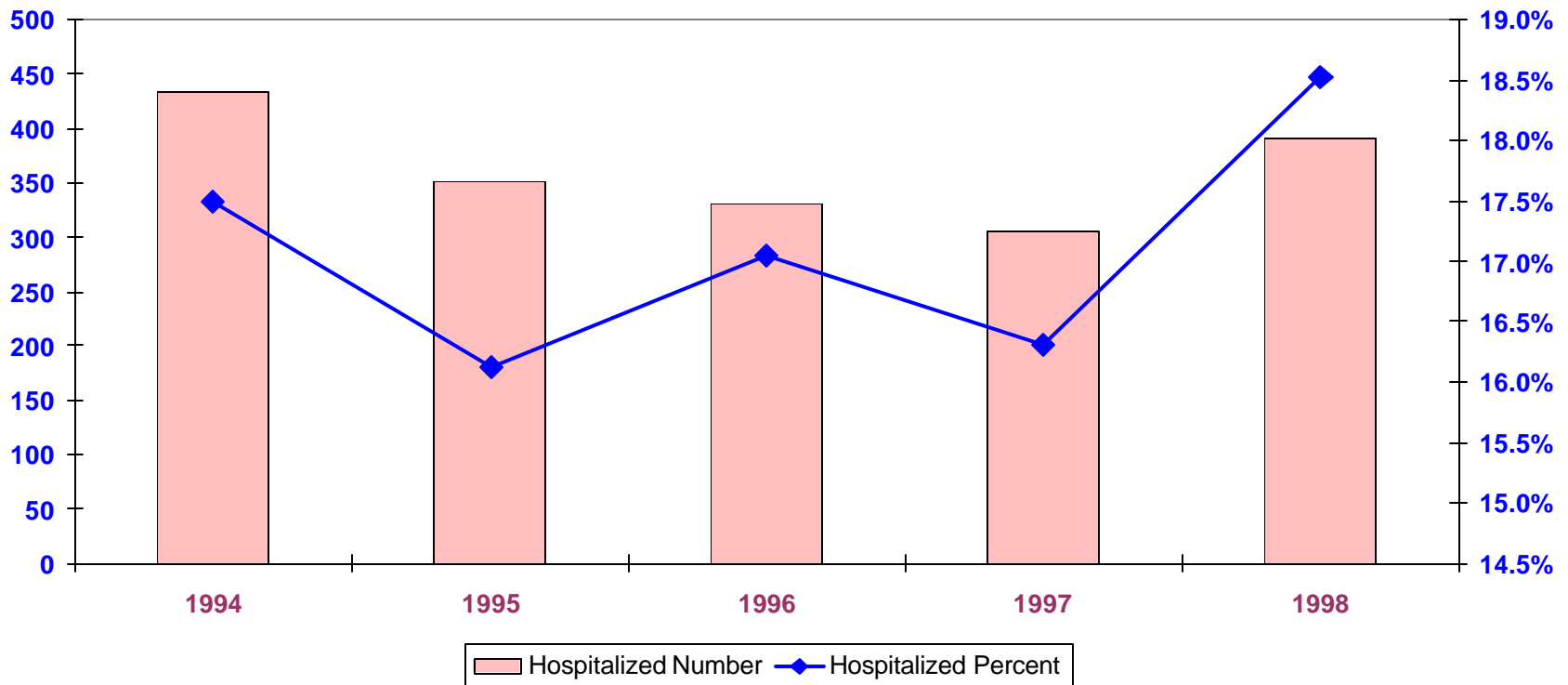
**Graph 13.**  
**Number and Percent of Motorcycle Drivers Involved In a Crash Who Were Hospitalized, by Age Group, Wisconsin, 1994-1998**



**Graph 14.**  
**Number and Percent of Motorcycle Drivers Involved in a Crash Who Died, by Age, Wisconsin, 1994-1998**



**Graph 15.**  
**Number and Percent of Motorcycle Drivers Hospitalized after a Crash, by**  
**Year, Wisconsin, 1994-1998**



**Graph 16.**  
**Number and Percent of Motorcycle Drivers who Died after a Crash, by Year,**  
**Wisconsin, 1994-1998**

