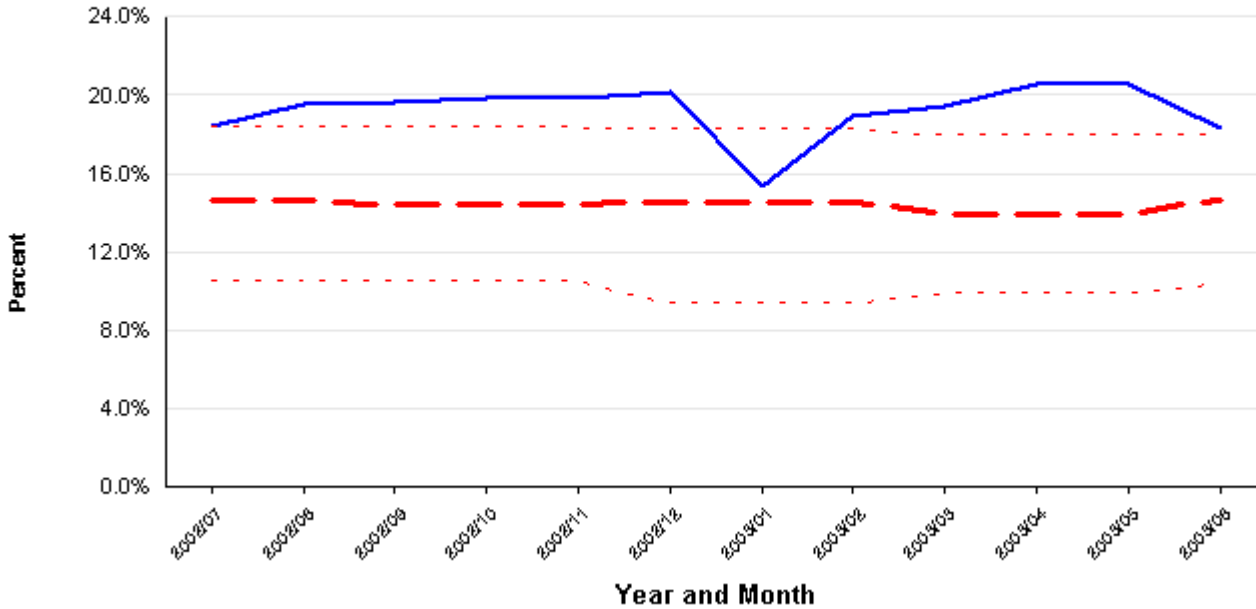
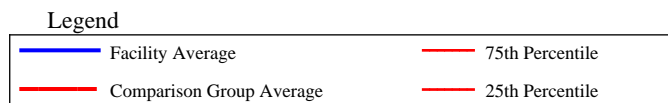
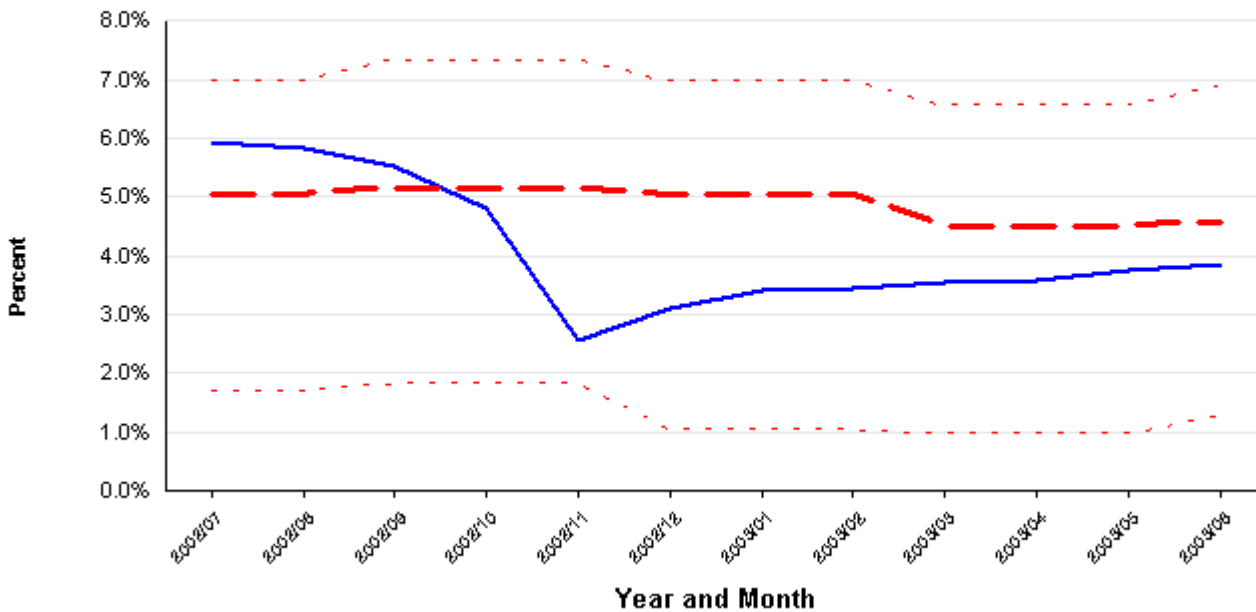


Facility QI / QM Graphs over 12 Months - Chronic Care

QI /QM #1.2 Prevalence of falls

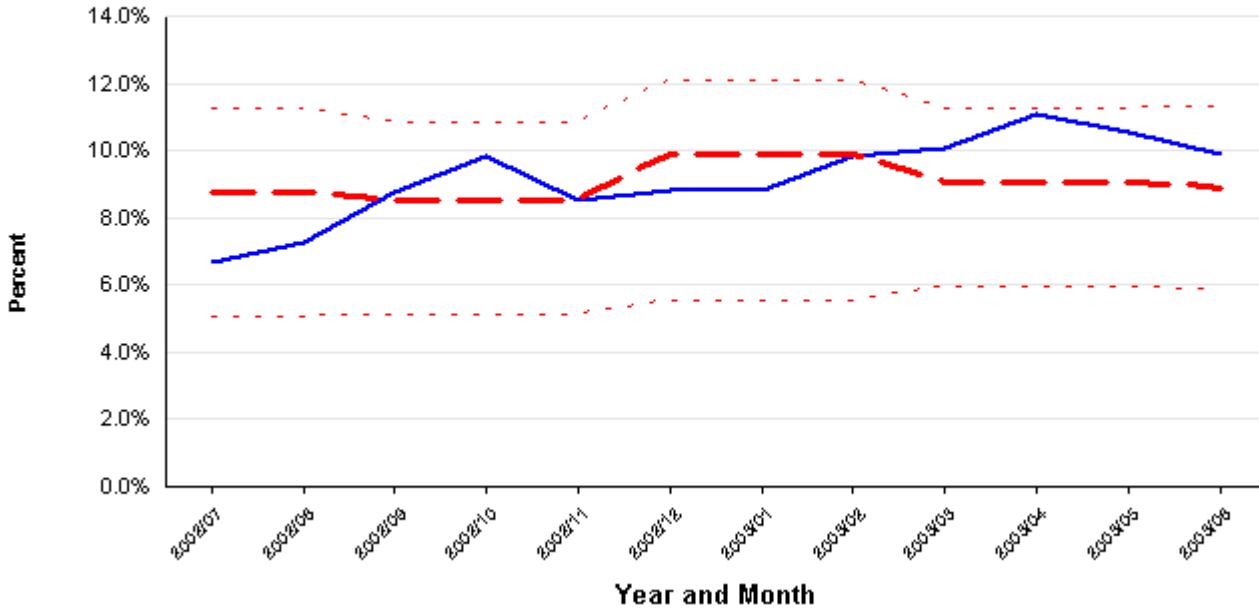


QI /QM #2.3 Prevalence of symptoms of depression without antidepressant therapy



Facility QI / QM Graphs over 12 Months - Chronic Care

QI /QM #7.1 Residents who lose too much weight



Legend

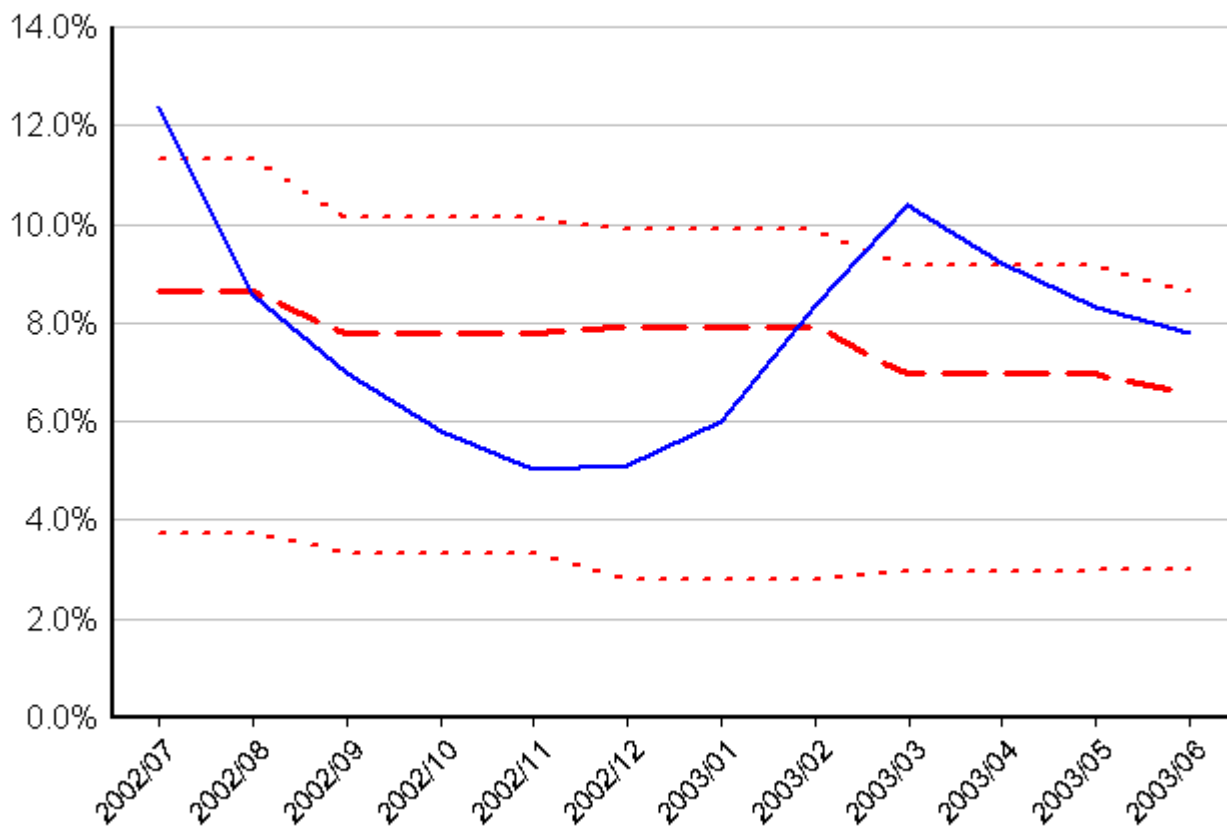
— Facility Average	- - - 75th Percentile
- - - Comparison Group Average	- - - 25th Percentile

Facility QI / QM Graphs over 12 Months - Chronic Care

REGRESSION ADJUSTED

QI / QM #8.1 Residents who have moderate to severe pain

Facility and comparison group numbers for the graph on this page have been adjusted using the same Regression Adjustment Process used for reports from CMS



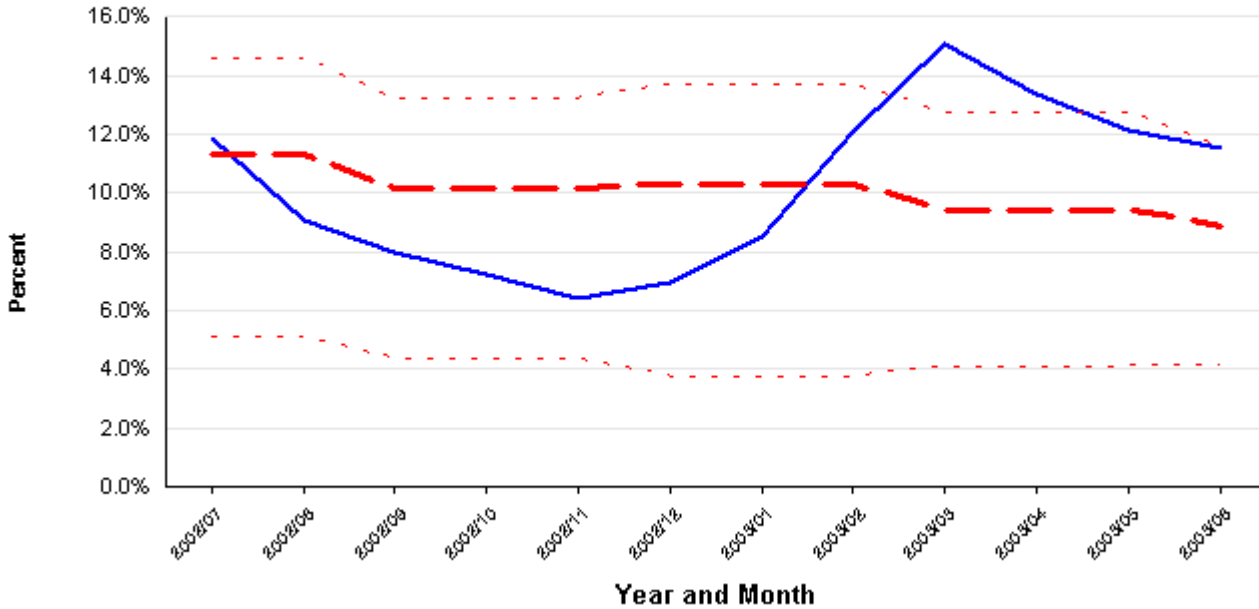
The graph on this page shows the overall facility average after adjusting for the risk factors specified by the Centers for Medicare and Medicaid Services (CMS). The comparison group average and percentile ranks are also adjusted for risk. Unadjusted QI / QM graphs for this indicator appear on adjacent pages

Legend

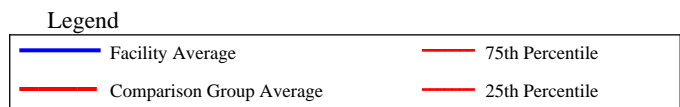
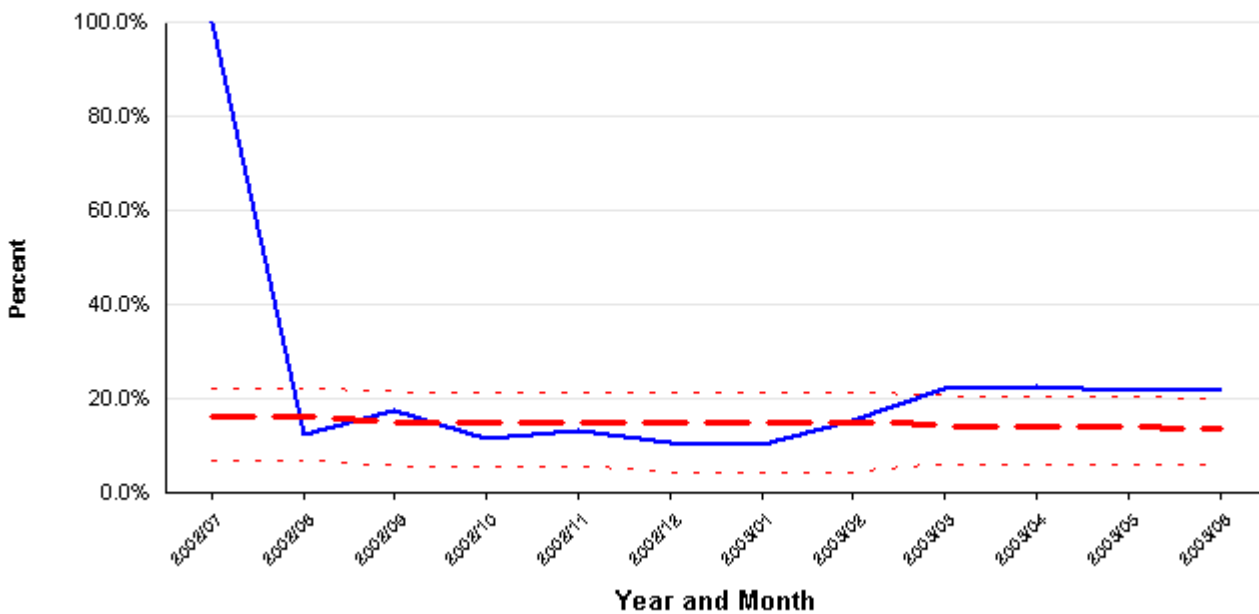
— Facility Average	— 75th Percentile
- - - Comparison Group Average	· · · 25th Percentile

Facility QI / QM Graphs over 12 Months - Chronic Care

QI /QM #8.1 Residents who have moderate to severe pain



**QI /QM #8.1 Residents who have moderate to severe pain
 High risk**



Facility QI / QM Graphs over 12 Months - Chronic Care

**QI /QM #8.1 Residents who have moderate to severe pain
 Low risk**

